

24" STEEL WELL GRATE

Heavy duty "bee hive" grate

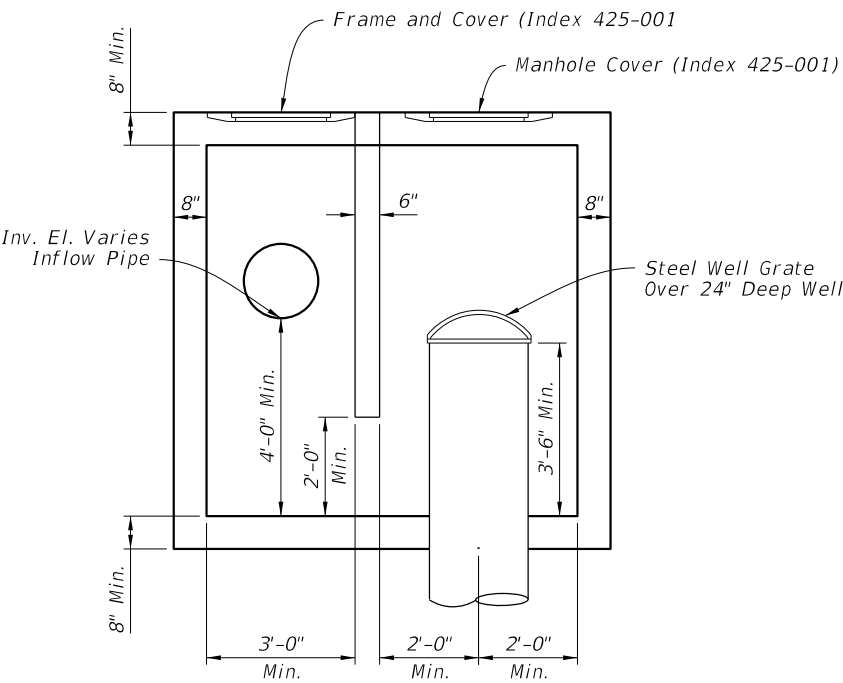
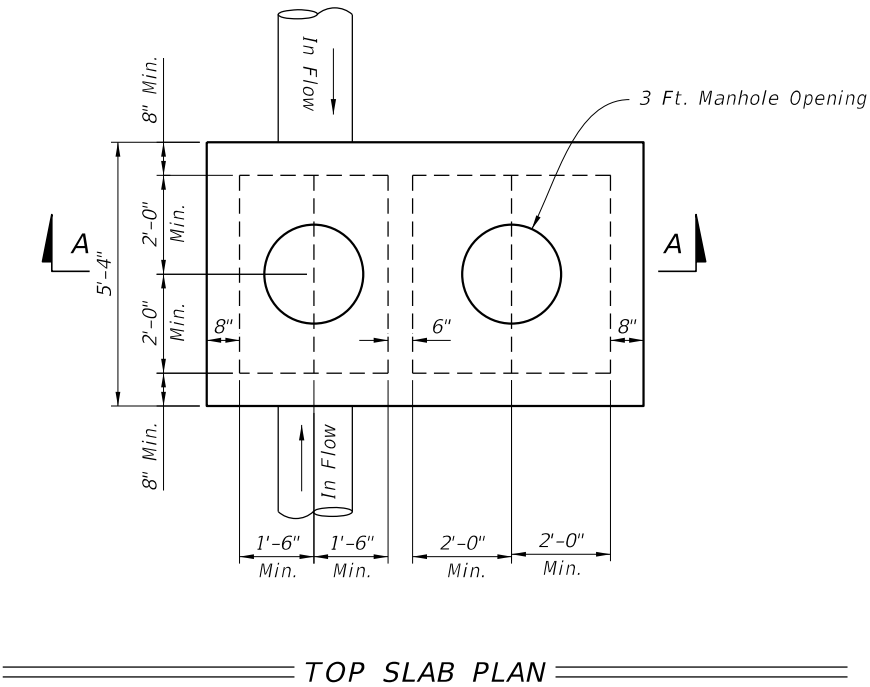
Openings: 1-1/2" maximum

Total Opening: 1.7 sq ft minimum

For 24" well, outer diameter = 29"

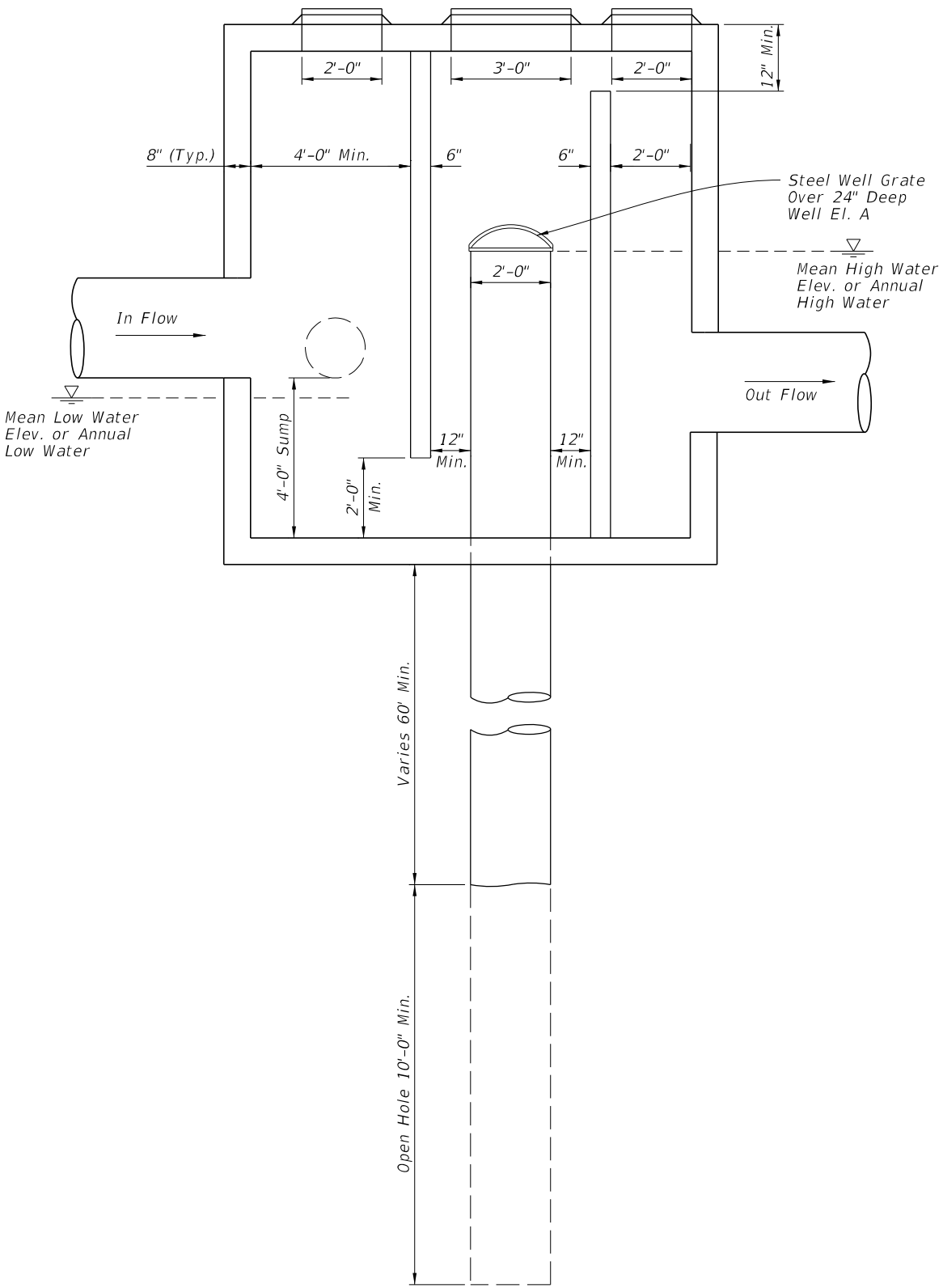
Steel well grate to be installed over 24" deep well.

Steel grate to be hot dipped galvanized after fabrication, see Specification Section 962.



SECTION A-A

STRUCTURE WITHOUT OUTFLOW



SPECIAL MANHOLE STRUCTURE
DETAIL WITH OUTFALL

DESIGN NOTES:

1. Depth of casing varies, 60' min.
2. Depth of open hole, 10'-20'.
3. Actual size of the inflow and outflow chambers will be determined by the size of the pipes (refer to table 3 of index 425-010). The width of the box shall be constant based on the largest pipe. The length is to be adjusted based on size and orientation of the pipes.



FY 2026-27
STANDARD PLANS

DEEP WELL INJECTION BOX

INDEX
444-T01

SHEET
1 of 1

LAST
REVISION
11/01/xx

REVISION

DESCRIPTION: