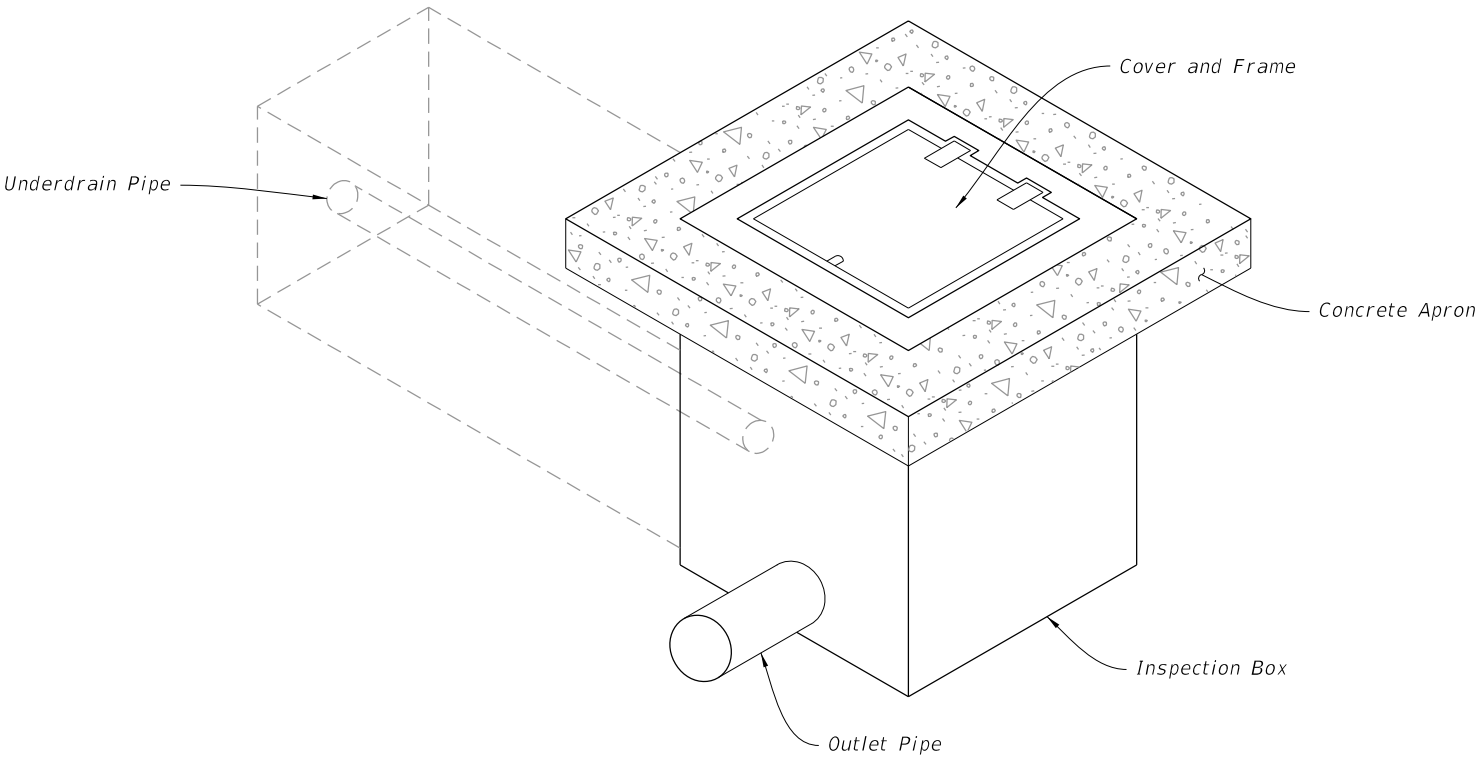


GENERAL NOTES:


- 1. Install light duty cast iron cover and frame in accordance with Specification 962.
- 2. Use Class II concrete. Use No. 3 bars (Grade 60) on 8" centers both ways, sides and bottom.
- 3. Furnish covers with pick holes. Do not use fitted lifts or handles.
- 4. Manhole Type P Alternate A, Index 425-010, Type I Frame and Cover, Index 425-001, may be used in lieu of the box detailed in this Index.

| TABLE OF CONTENTS: | |
|--------------------|--|
| Sheet | Description |
| 1 | General Notes and Contents |
| 2 | Typical Inspection Box Installation |
| 3 | Typical Urban, Slope, and Top Adjustment Installations |

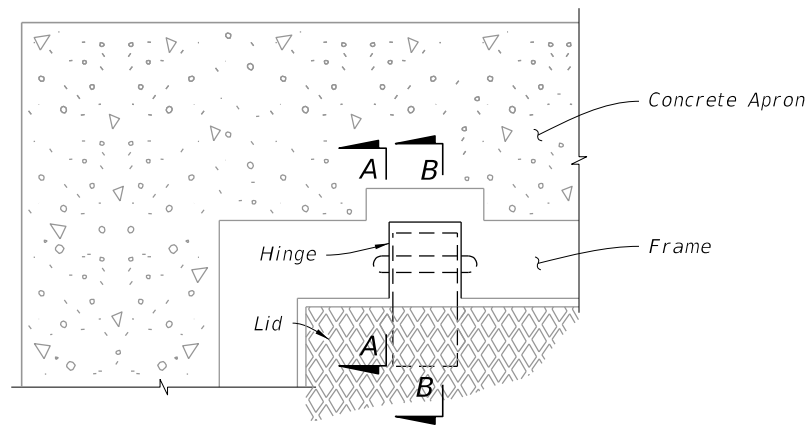


UNDERDRAIN INSPECTION BOX ASSEMBLY

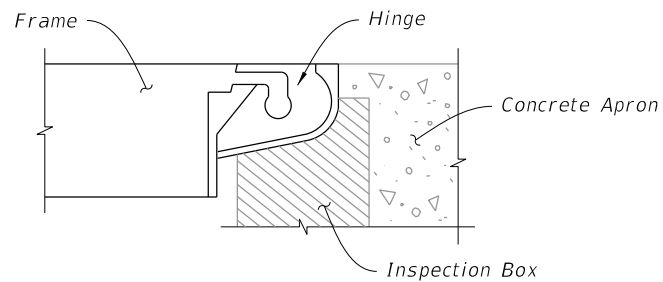
9/26/2025 1:11:24 PM

| | | | | | | |
|------------------------------|----------|--------------|--|---------------------------|------------------|-----------------|
| LAST REVISION 11/01/21 | REVISION | DESCRIPTION: |  FY 2026-27 STANDARD PLANS | UNDERDRAIN INSPECTION BOX | INDEX 440-002 | SHEET 1 of 3 |
|------------------------------|----------|--------------|--|---------------------------|------------------|-----------------|

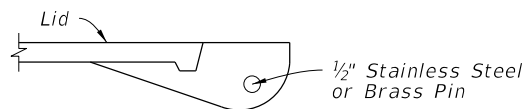
9/26/2025 1:11:30 PM



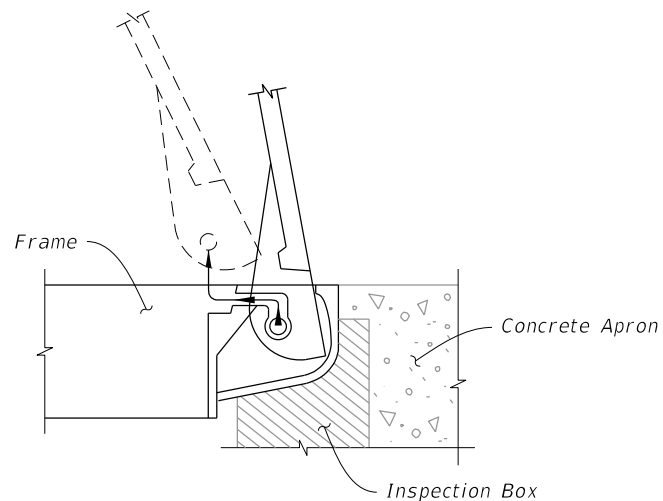
PLAN VIEW



SECTION A-A
(Frame)

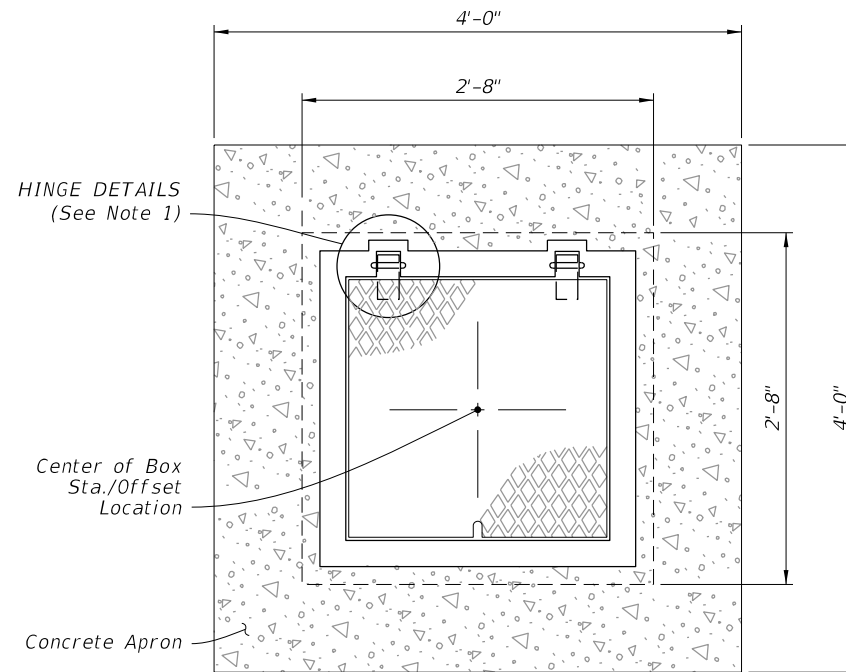


SECTION B-B
(Lid)

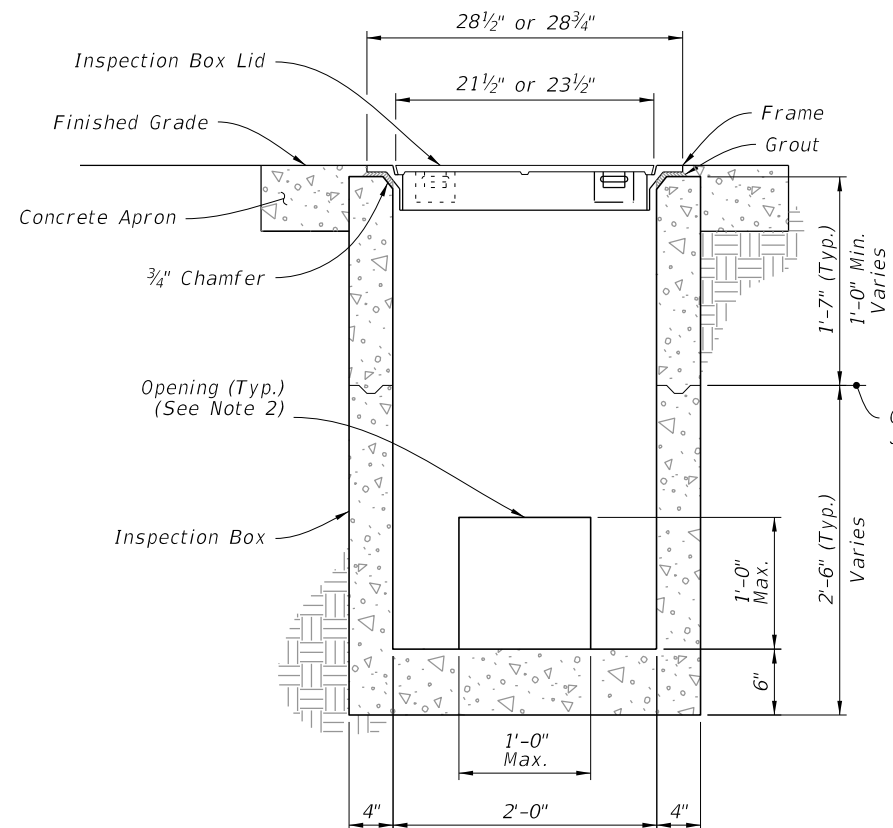


COVER REMOVAL

HINGE DETAIL



PLAN

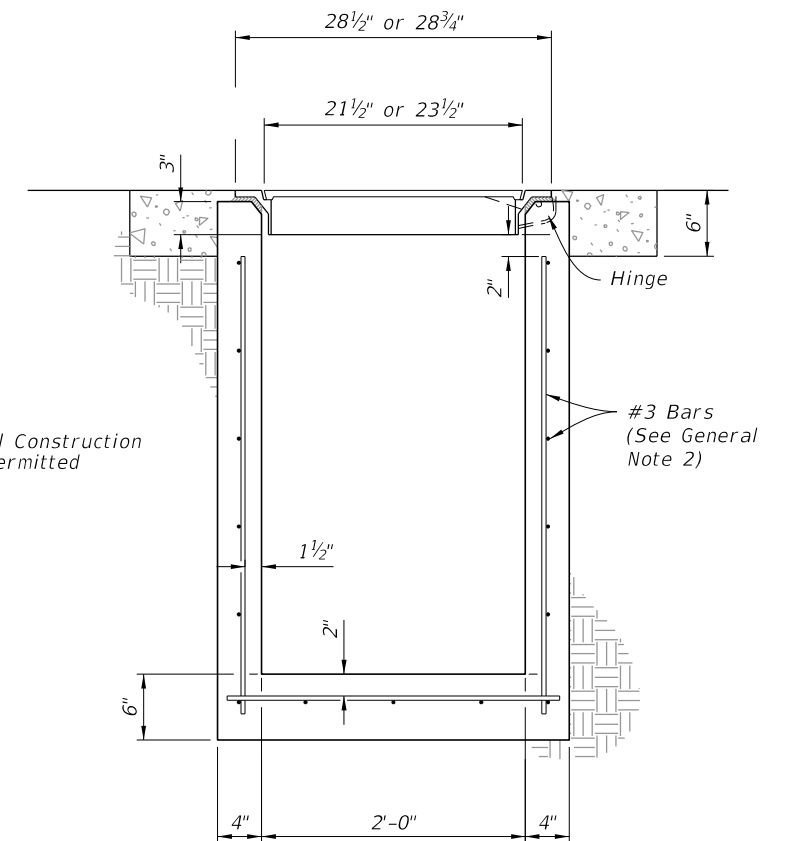


ELEVATION
(FRONT VIEW)

INSPECTION BOX DETAILS


NOTES:

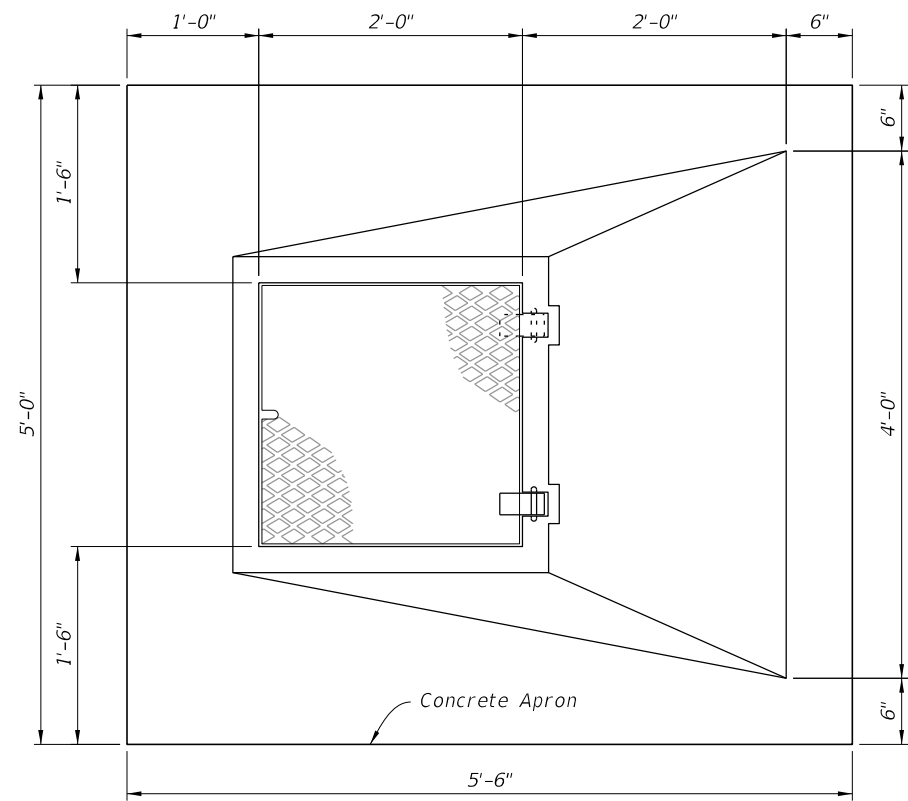
1. Cast or field cut 2 ~ 4" wide slots for hinges. Grout around hinge covers.
2. One or more sides may have an opening, see Plans for required openings. Grout around opening to seal between underdrain pipe and inspection box.



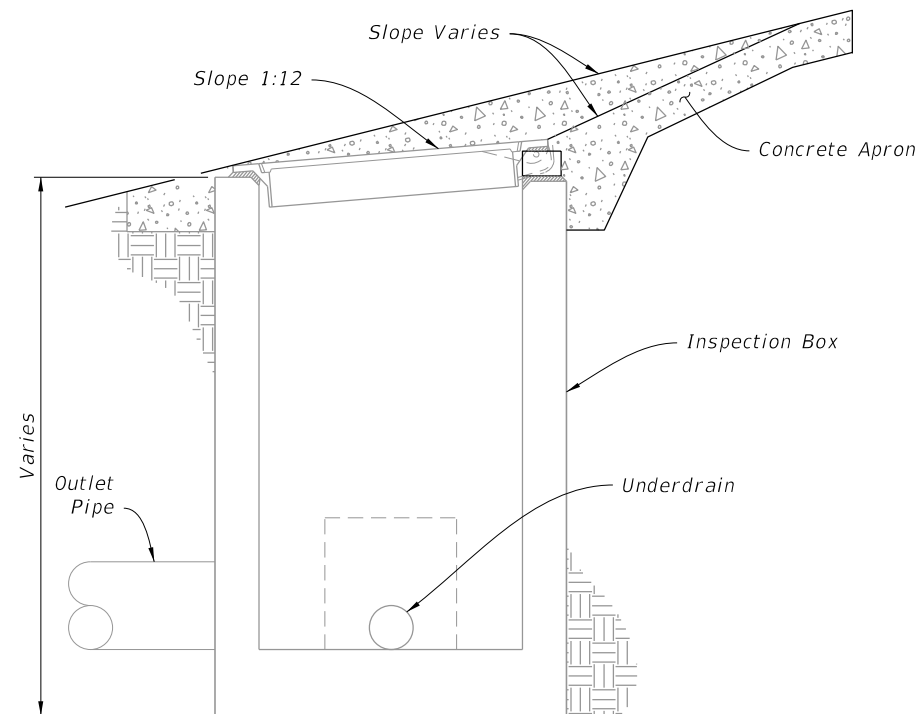
ELEVATION
(SIDE VIEW)

TYPICAL INSPECTION BOX INSTALLATION

| | | | | | | |
|------------------------------|----------|--------------|--|---------------------------|------------------|-----------------|
| LAST REVISION 11/01/19 | REVISION | DESCRIPTION: |  FY 2026-27 STANDARD PLANS | UNDERDRAIN INSPECTION BOX | INDEX 440-002 | SHEET 2 of 3 |
|------------------------------|----------|--------------|--|---------------------------|------------------|-----------------|

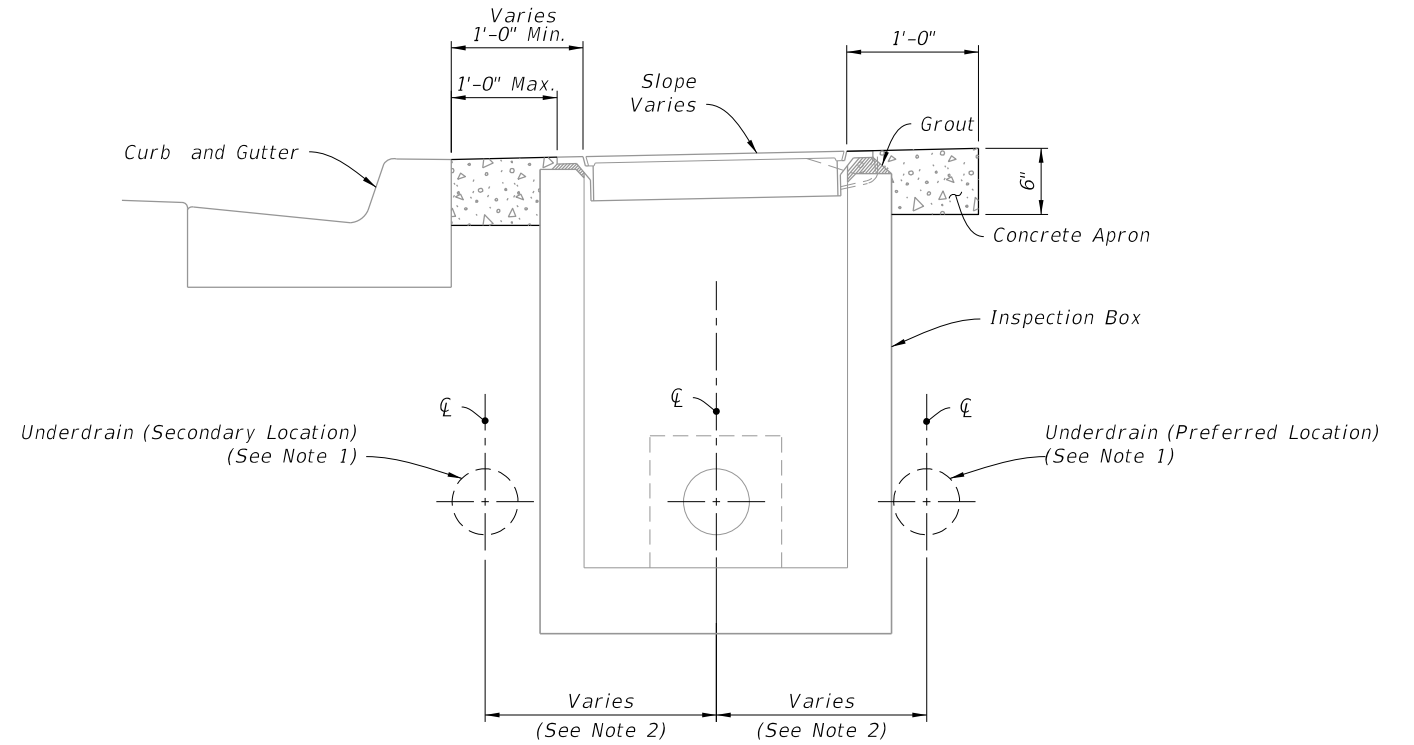


PLAN

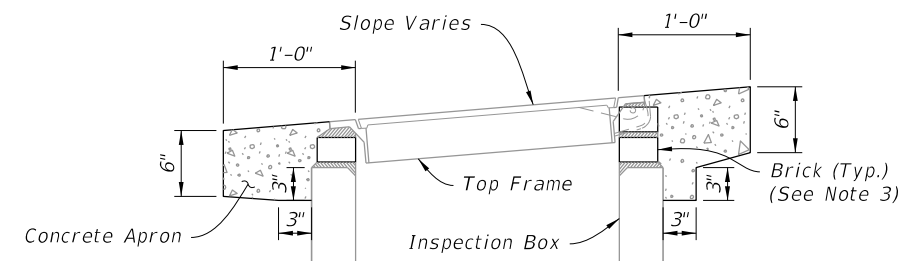


ELEVATION
(SIDE VIEW)

INSTALLATION ON SLOPE



TYPICAL URBAN INSTALLATION




TOP ADJUSTMENT

NOTES:

1. See Index 120-002 for Underdrain placement.
2. Curve the Underdrain to connect to the Inspection Box.
3. A maximum of 2 adjustment courses of brick is permitted.

TYPICAL URBAN, SLOPE, AND TOP ADJUSTMENT INSTALLATIONS

| | | | | | | | |
|------------------------------|----------|--------------|---|------------------------------|---------------------------|------------------|-----------------|
| LAST REVISION 11/01/19 | REVISION | DESCRIPTION: |  | FY 2026-27 STANDARD PLANS | UNDERDRAIN INSPECTION BOX | INDEX 440-002 | SHEET 3 of 3 |
|------------------------------|----------|--------------|---|------------------------------|---------------------------|------------------|-----------------|