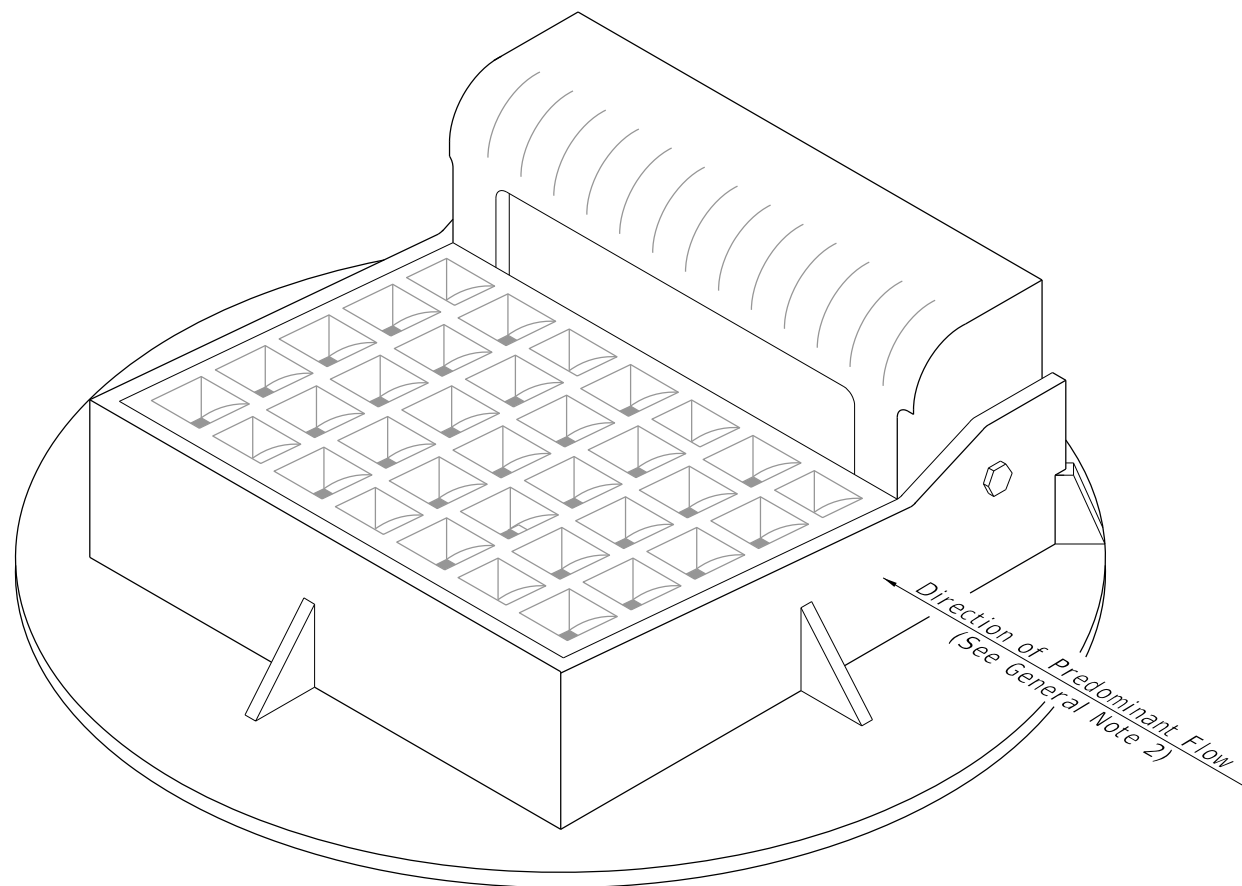


GENERAL NOTES:

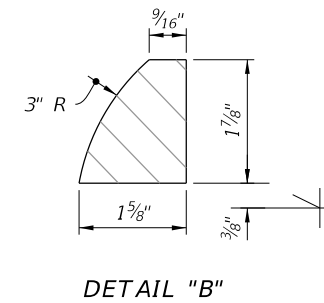
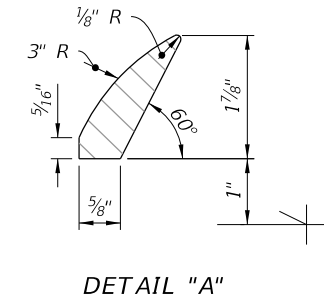
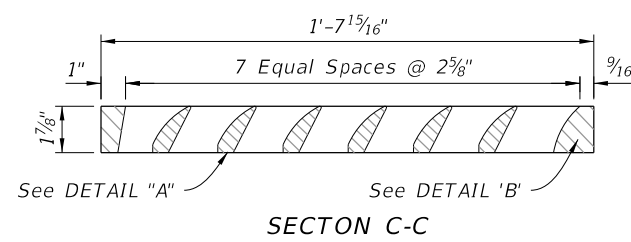
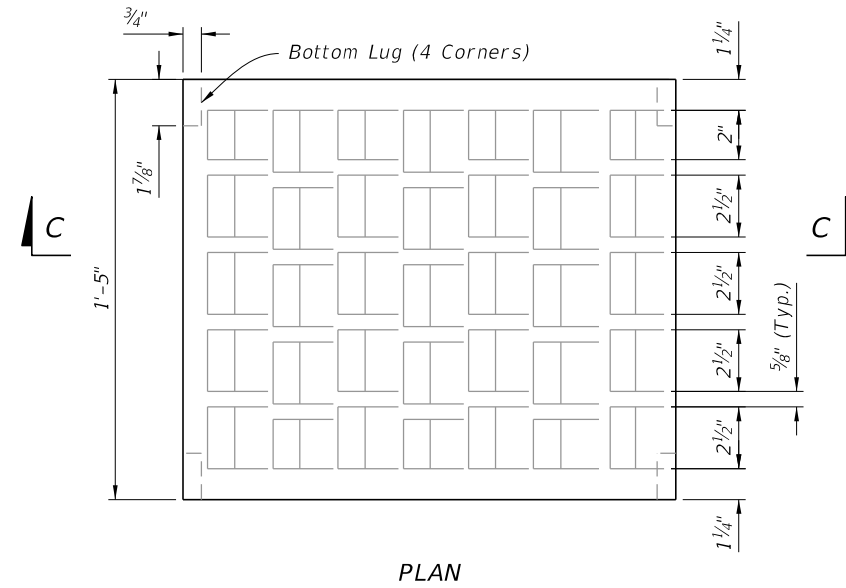
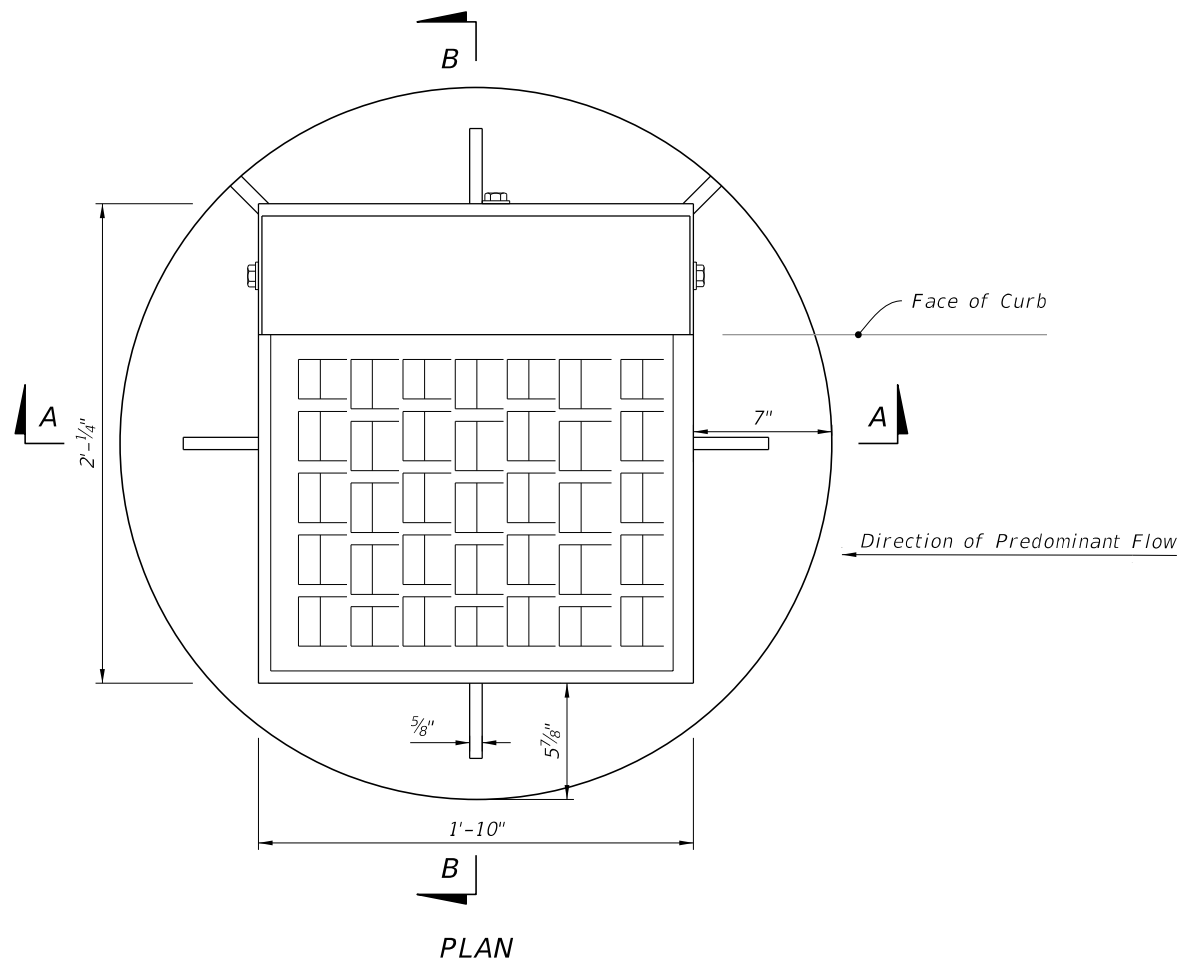
1. Work this Index with Index 425-001 and Index 425-010.
2. Orient grate with vanes directed toward predominant flow.
3. Provide 1¼" minimum cover for steel in slab tops unless otherwise shown. Tops may be either cast-in-place or precast concrete.
4. Place top slab openings such that 2 edges of inlet frame will be located directly above bottom or riser walls, for Alternate B applications.
5. When used on a structure with dimensions larger than those detailed on Sheet 3 and risers are not applied, construct the top slab using Index 425-010 with the slab opening adjusted to 22"x24". The "Special Top Slab" on Index 425-010 is not permitted.
6. Frame may be adjusted with one to six courses of brick.
7. Vaned grates with approximately equal openings that satisfy AASHTO HL-93 loading are permitted. Provide reversible (right or left) grates.

| TABLE OF CONTENTS: | |
|--------------------|----------------------------|
| Sheet | Description |
| 1 | General Notes and Contents |
| 2 | Frame and Grate Details |
| 3 | Top Slab Details |

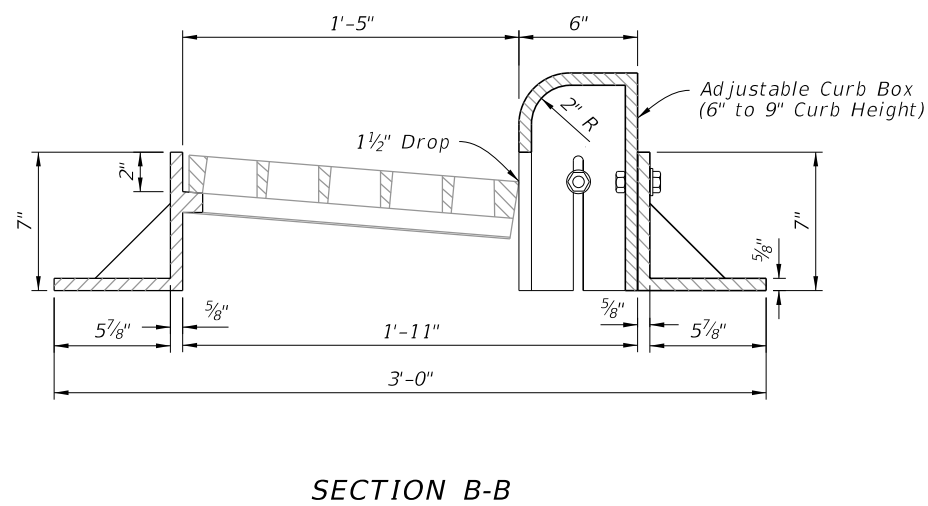
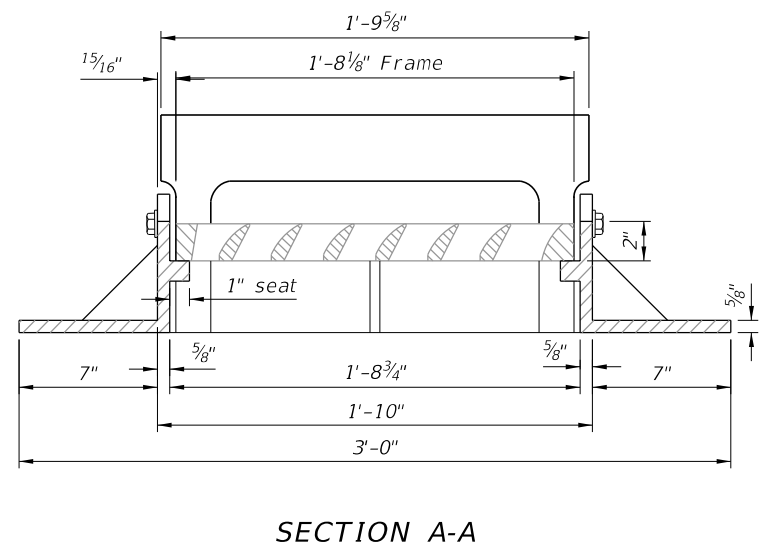


==== CURB INLET TOP TYPE 10 =====

9/26/2025 11:51:05 AM




GRATE DETAILS

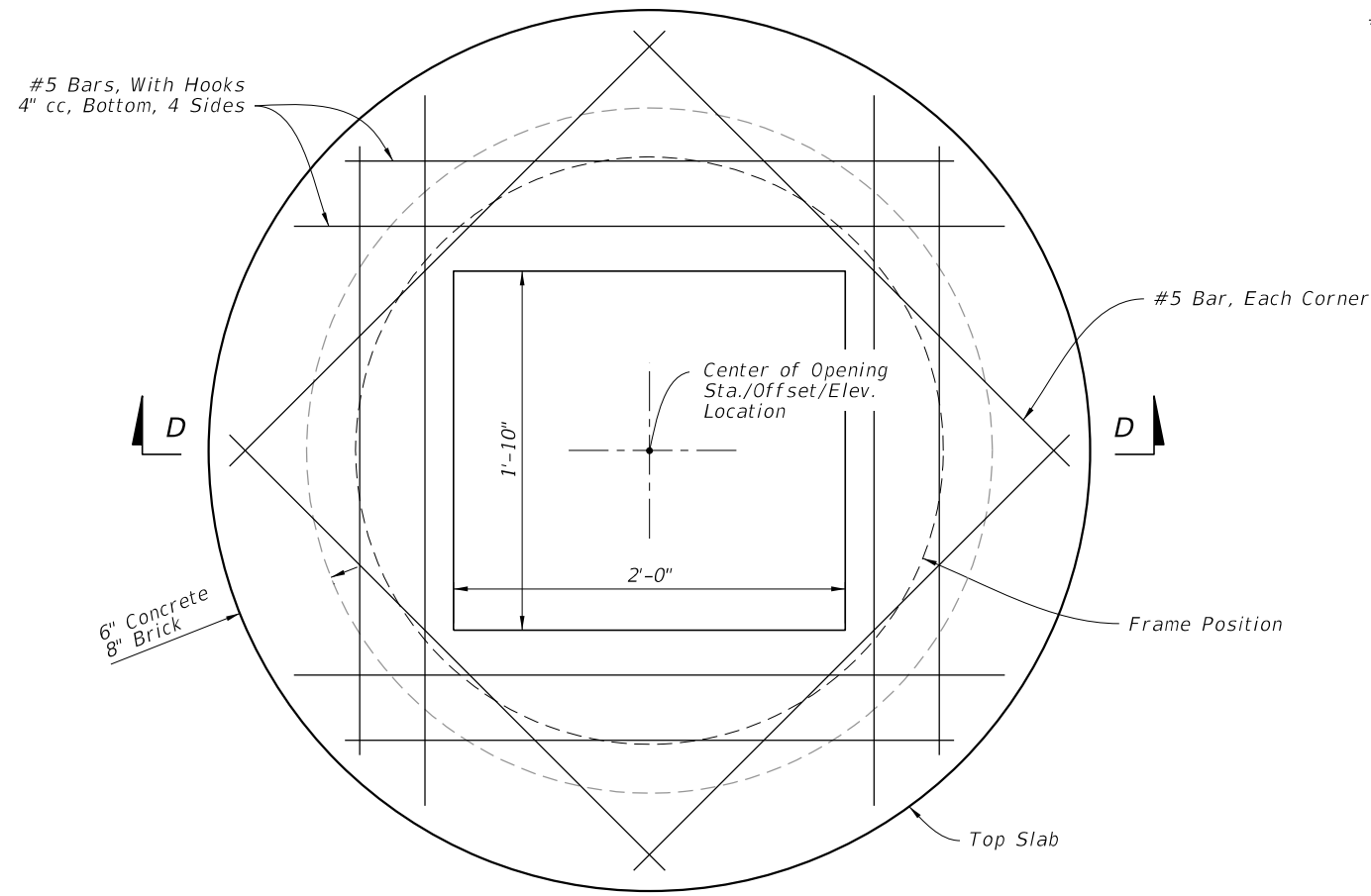


FRAME AND GRATE DETAILS

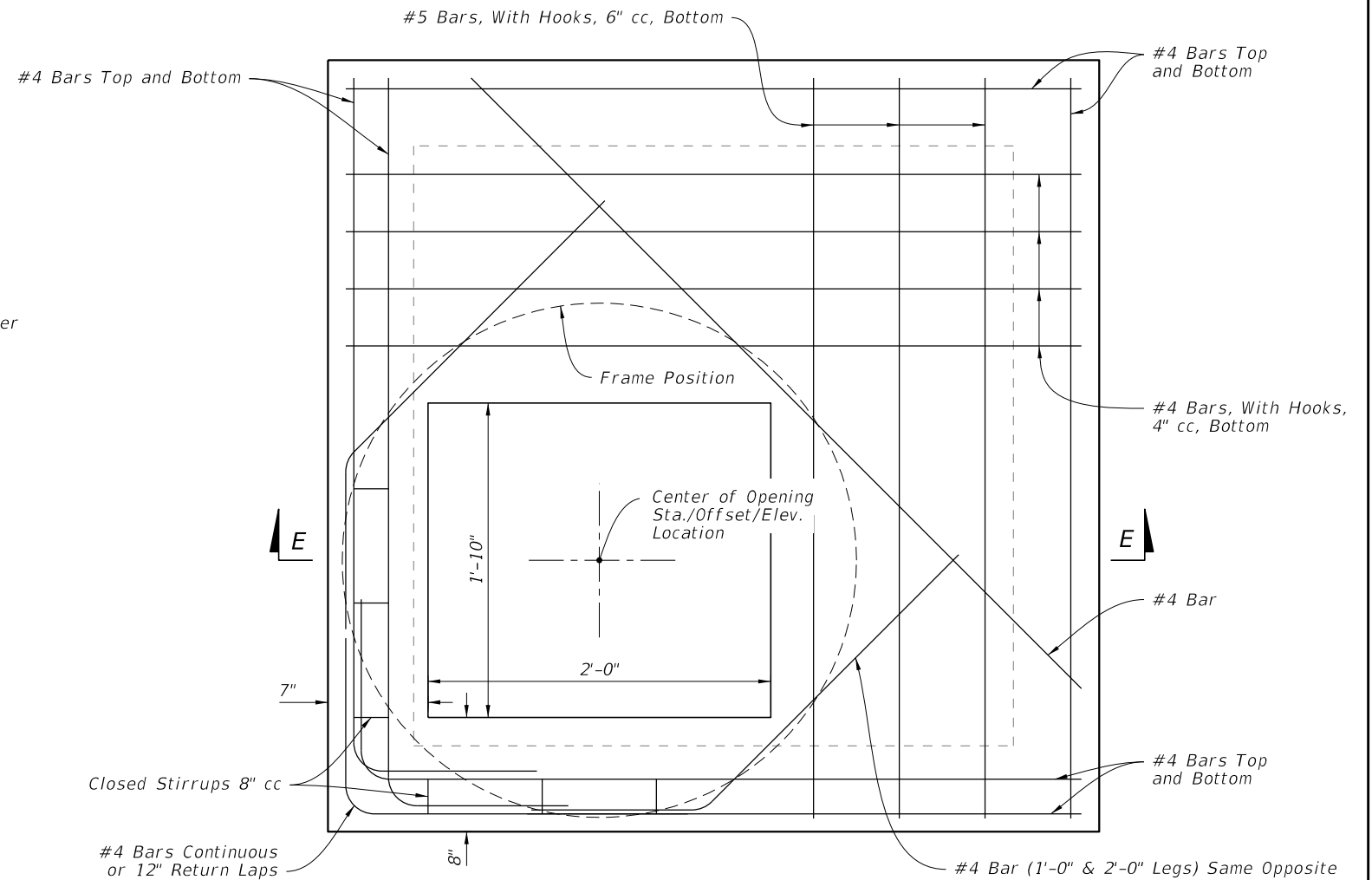
9/26/2025 11:51:11 AM

| | | | | | |
|---------------------------|--------------|--|--------------------|---------|--------|
| LAST REVISION 11/01/20 | DESCRIPTION: |  FY 2026-27 STANDARD PLANS | CURB INLET TYPE 10 | INDEX | SHEET |
| | | | | 425-025 | 2 of 3 |

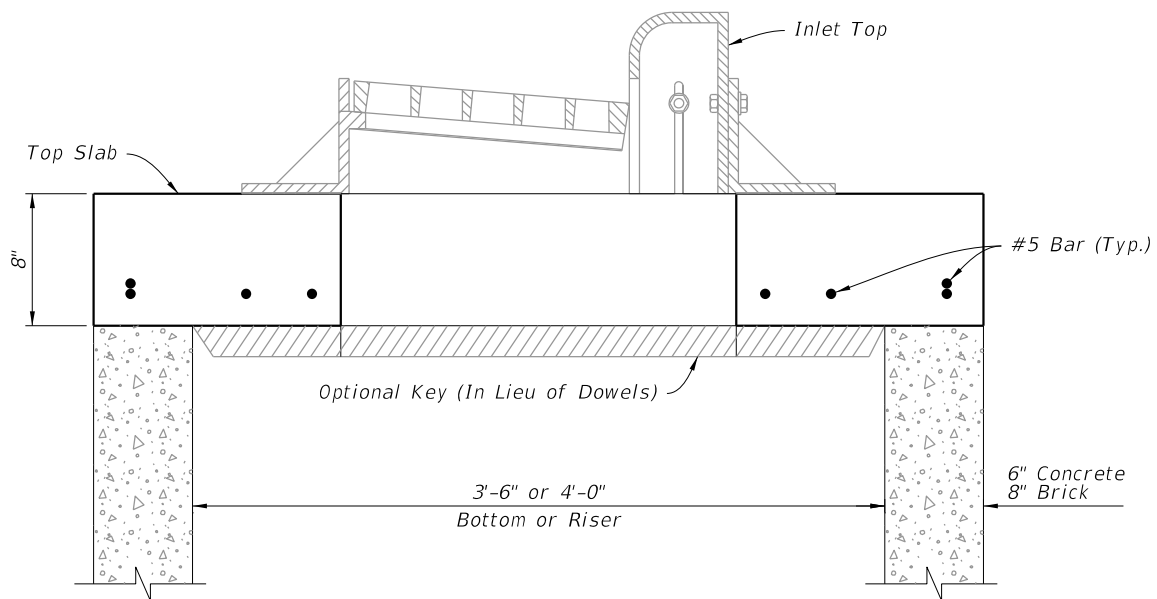
FRAME AND GRATE DETAILS



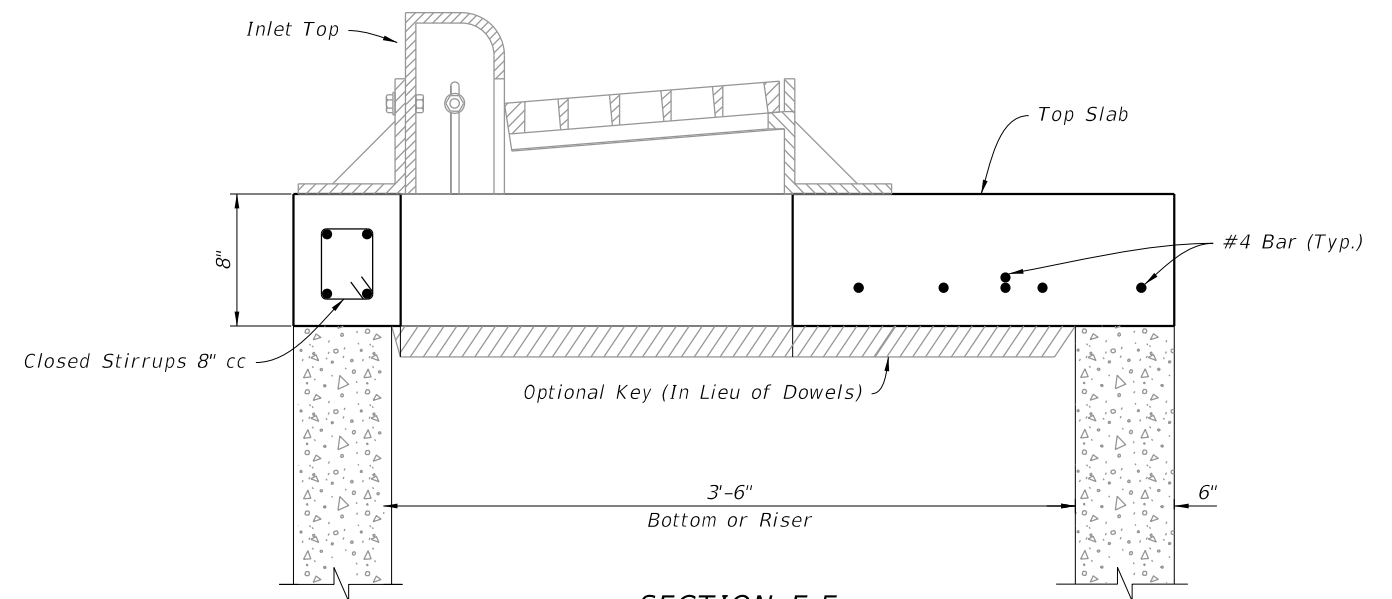
PLAN



PLAN




SECTION D-D



SECTION E-E

TOP SLAB DETAILS

9/26/2025 11:51:17 AM

| | | | | | | | |
|---------------------------|----------|--------------|---|------------------------------|--------------------|------------------|-----------------|
| LAST REVISION 11/01/20 | REVISION | DESCRIPTION: |  | FY 2026-27 STANDARD PLANS | CURB INLET TYPE 10 | INDEX 425-025 | SHEET 3 of 3 |
|---------------------------|----------|--------------|---|------------------------------|--------------------|------------------|-----------------|