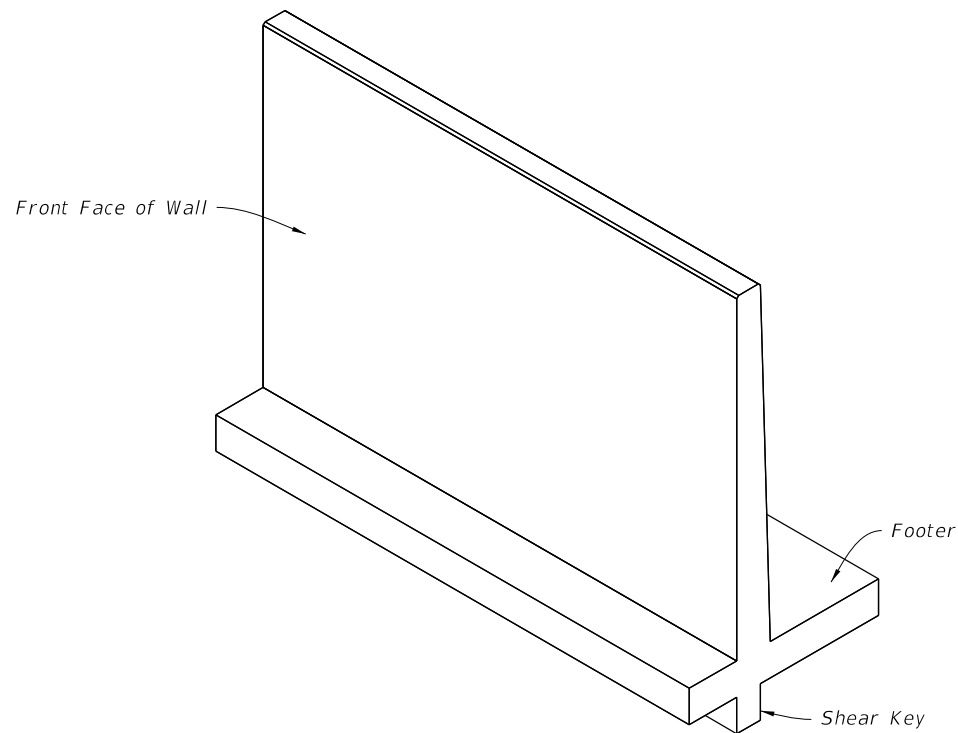
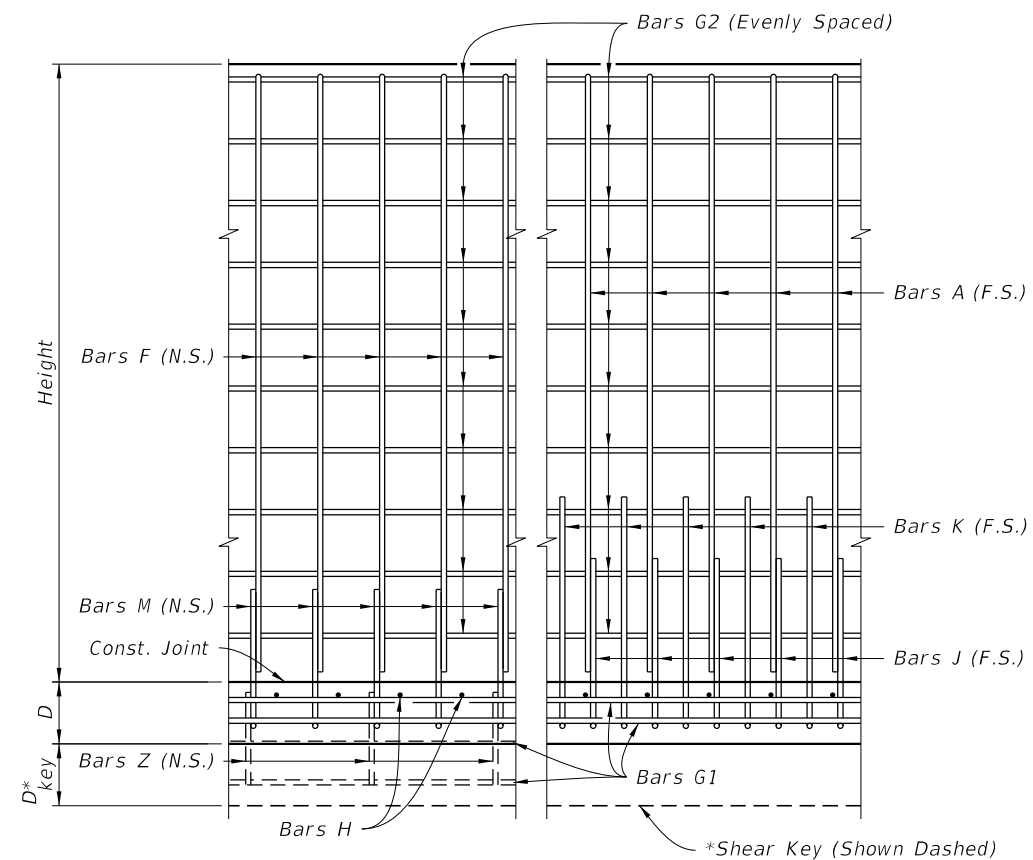


\*Shear Key is required only when specified in the Plans.

TYPICAL SECTION



ISOMETRIC VIEW



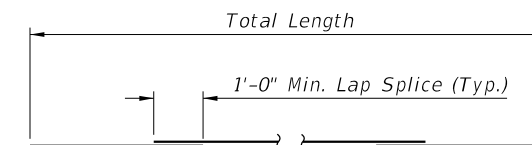
(Showing Near Side Reinforcement)

(Showing Far Side Reinforcement)

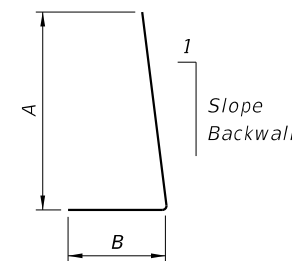
VIEW A-A

**GENERAL NOTES:**

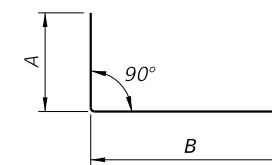
1. Work with Specifications 400 and 415. See the Retaining Wall Control Drawings and Data Tables in the Plans.
2. TRAFFIC RAILINGS OR PARAPETS:  
If there is a Traffic Railing or Parapet on the wall, align Wall Joints with V-Grooves, and Wall Expansion Joints with Barrier Open Joints.
3. FOUNDATION:  
Prepare the soil below the footing in accordance with the requirements for spread footings in Specification 455.



BARS G1 & G2



BARS J & K




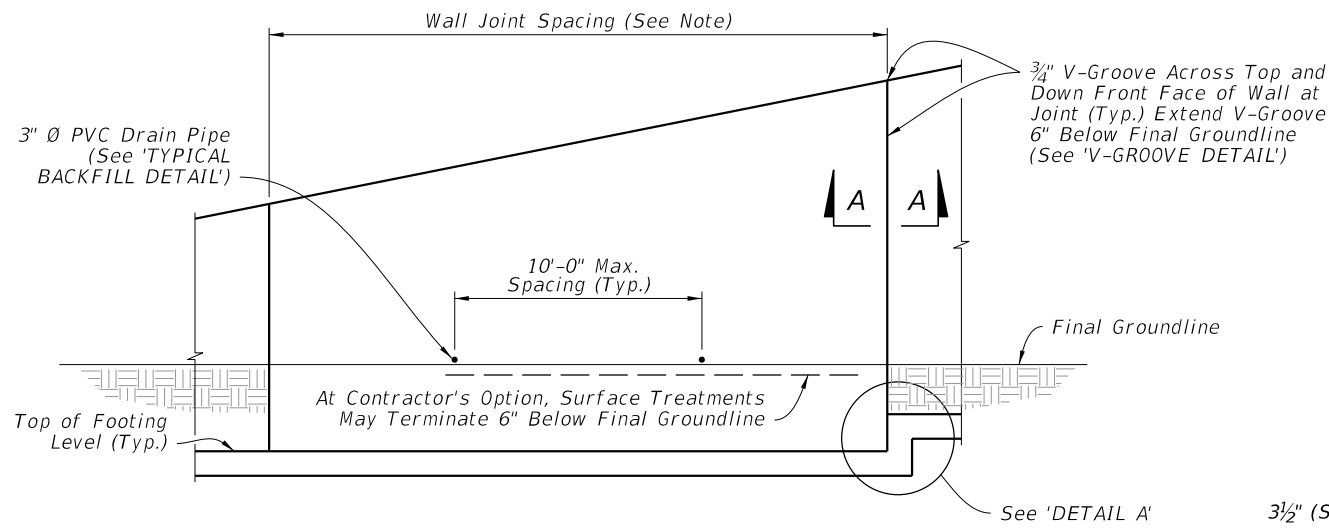
BARS M

NOTE: All bar dimensions are out-to-out

REINFORCING BENDING DIAGRAMS

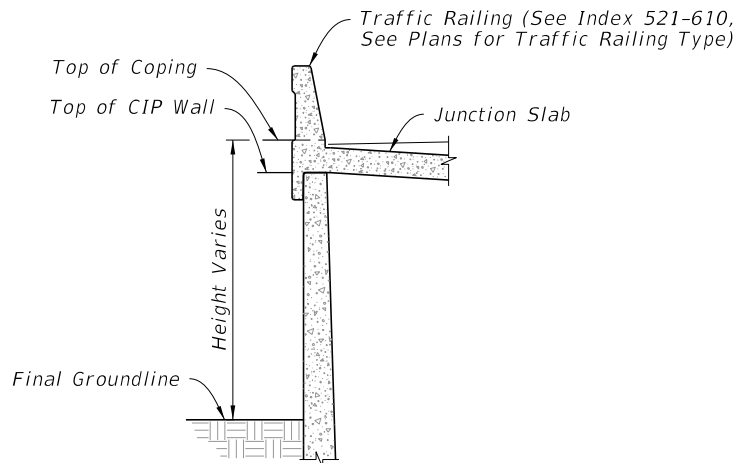
10/10/2025 8:37:00 AM

LAST REVISION 11/01/25	REVISION	DESCRIPTION:		FY 2026-27 STANDARD PLANS	CANTILEVER RETAINING WALL (C-I-P)	INDEX 400-010	SHEET 1 of 2
---------------------------	----------	--------------	---------------------------------------------------------------------------------------	------------------------------	-----------------------------------	------------------	-----------------

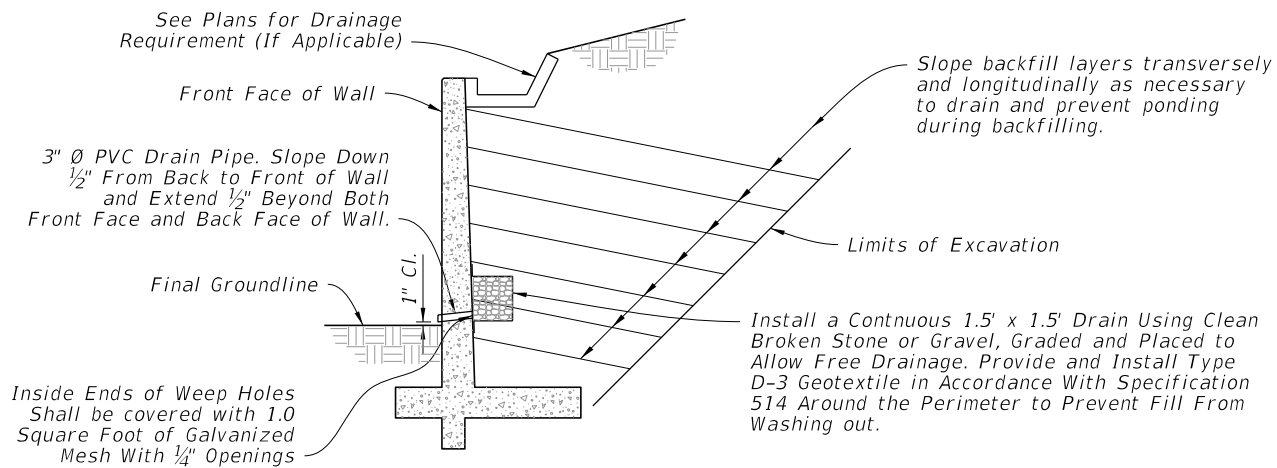


NOTE: Wall joint spacing 25' maximum and 5' minimum. At Minimum, every fourth wall joint to be an expansion joint. See plans for actual wall joint spacing and expansion joint locations.

FRONT ELEVATION



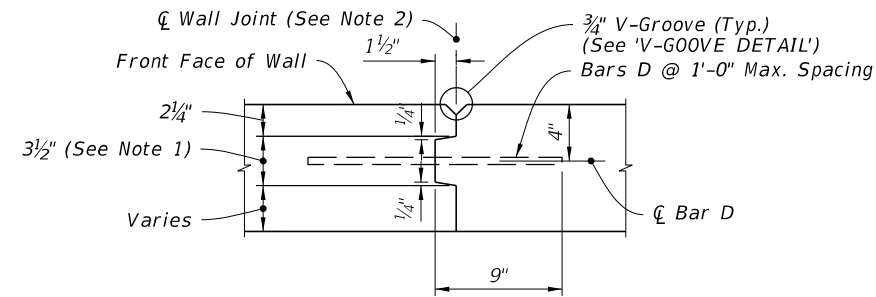
TRAFFIC RAILING/JUNCTION SLAB DETAIL  
(36" Single-Slope Shown, Other Traffic Railings Similar)



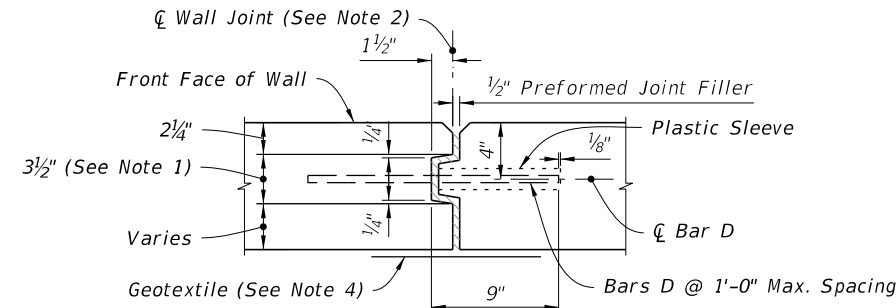
TYPICAL BACK-FILL DETAIL

NOTES:

1. Key to stop at top of footing and 6" from top of wall. Joint across footing and top of wall to be a straight line.
2. Stay-In-Place Plastic Preformed Bond Breakers are permitted to form joints.
3. Bars D: Where a bend is required to maintain clearances, submit bend angle to GFRP supplier; steel reinforcing may be field bent.
4. Provide and install Type D-5 geotextile in accordance with Specification 514. Attach geotextile, 1'-0" wide and full height of fill, to the back of wall with an adhesive approved by the Engineer.

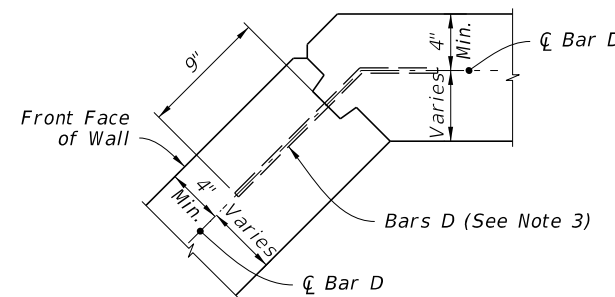


WALL JOINT DETAIL

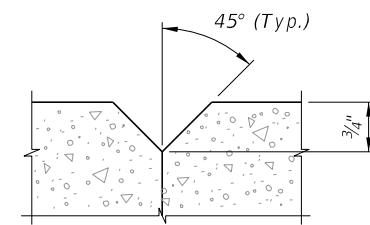


EXPANSION JOINT DETAIL

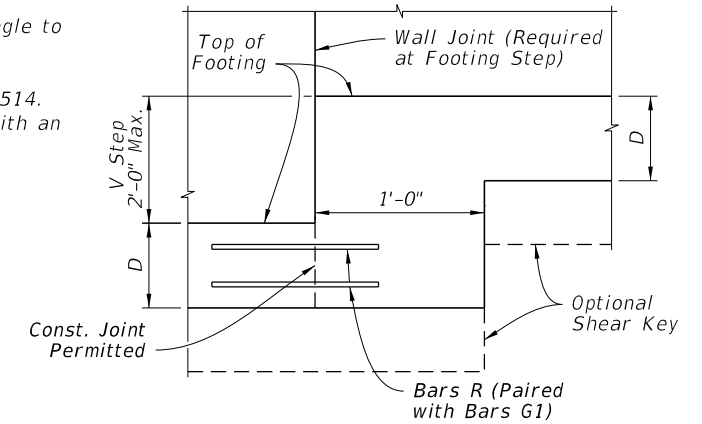
SECTION A-A



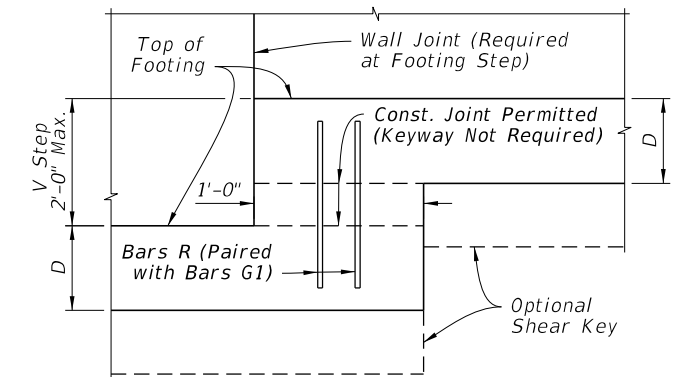
CORNER JOINT DETAIL (TYP.)



V-GROOVE DETAIL

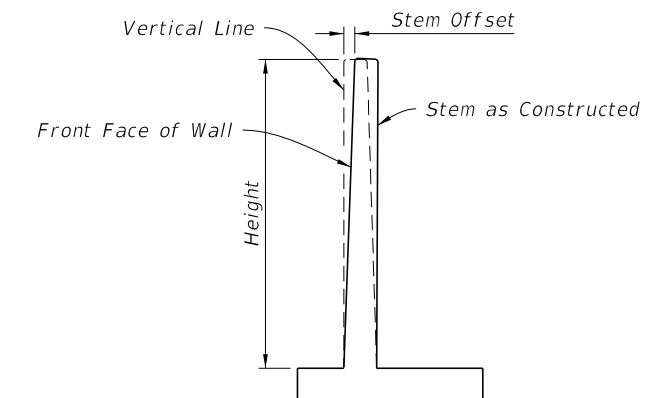


OPTION I



OPTION II

DETAIL A



Stem Offset (in.) = H (ft.) / 16

STEM OFFSET VALUES  
(For Height < 20 Ft.)

10/10/2025 8:37:07 AM

LAST REVISION 11/01/25	DESCRIPTION:		FY 2026-27 STANDARD PLANS	CANTILEVER RETAINING WALL (C-I-P)	INDEX	SHEET
					400-010	2 of 2