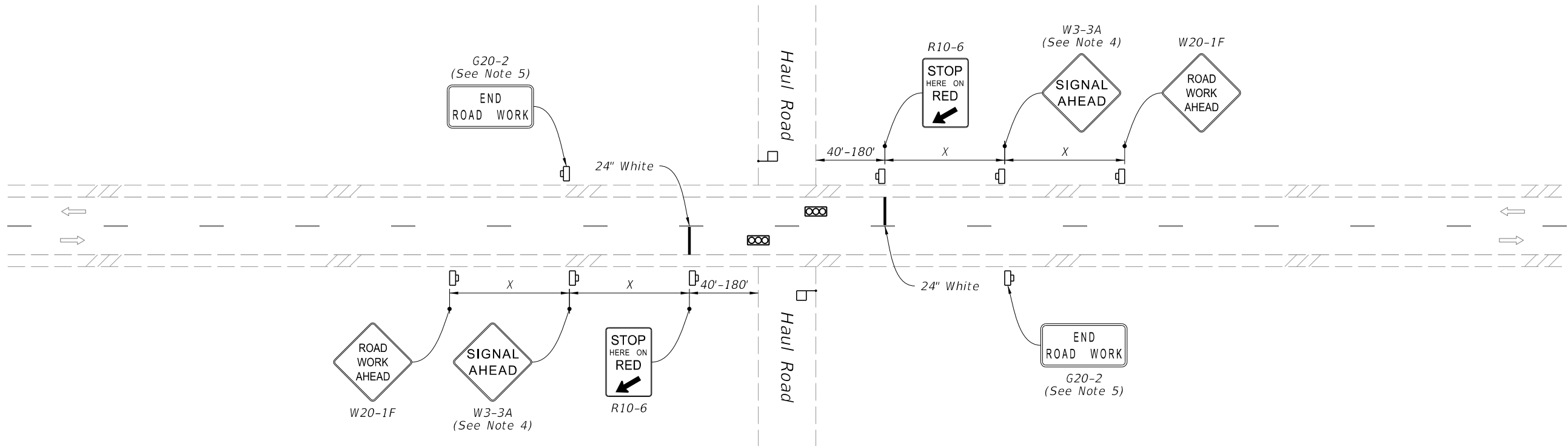


9/26/2025 11:37:31 AM



(Two-Lane Roadway Shown, Multilane Roadway Similar)

SYMBOLS:

- Work Zone Sign
- Temporary Traffic Signal
- Flagger
- Lane Identification and Direction of Traffic

NOTES:

1. This Index is intended for two-way and multilane roadways, excluding limited access facilities, with haul roads that intersect the roadway.
2. X=Work Zone Sign Distance, see Index 102-600 for "X" values.
3. Use Type III Barricades to block haul road access when the haul road is not in operation and a flagger/signal operator is not on duty, except when the haul road is an existing properly marked road.
4. Optionally, use "Signal Ahead" signs with symbols (W3-3) instead of "Signal Ahead" signs with text (W3-3A).
5. The "End Road Work" signs (G20-2) may be omitted when the work operation is in place for 24 hours or less.
6. Optionally, use temporary traffic signals for control of the haul road.



FY 2026-27
STANDARD PLANS

HAUL ROAD CROSSING

INDEX
102-680

SHEET
1 of 1

LAST
REVISION
11/01/22

REVISION
DESCRIPTION: