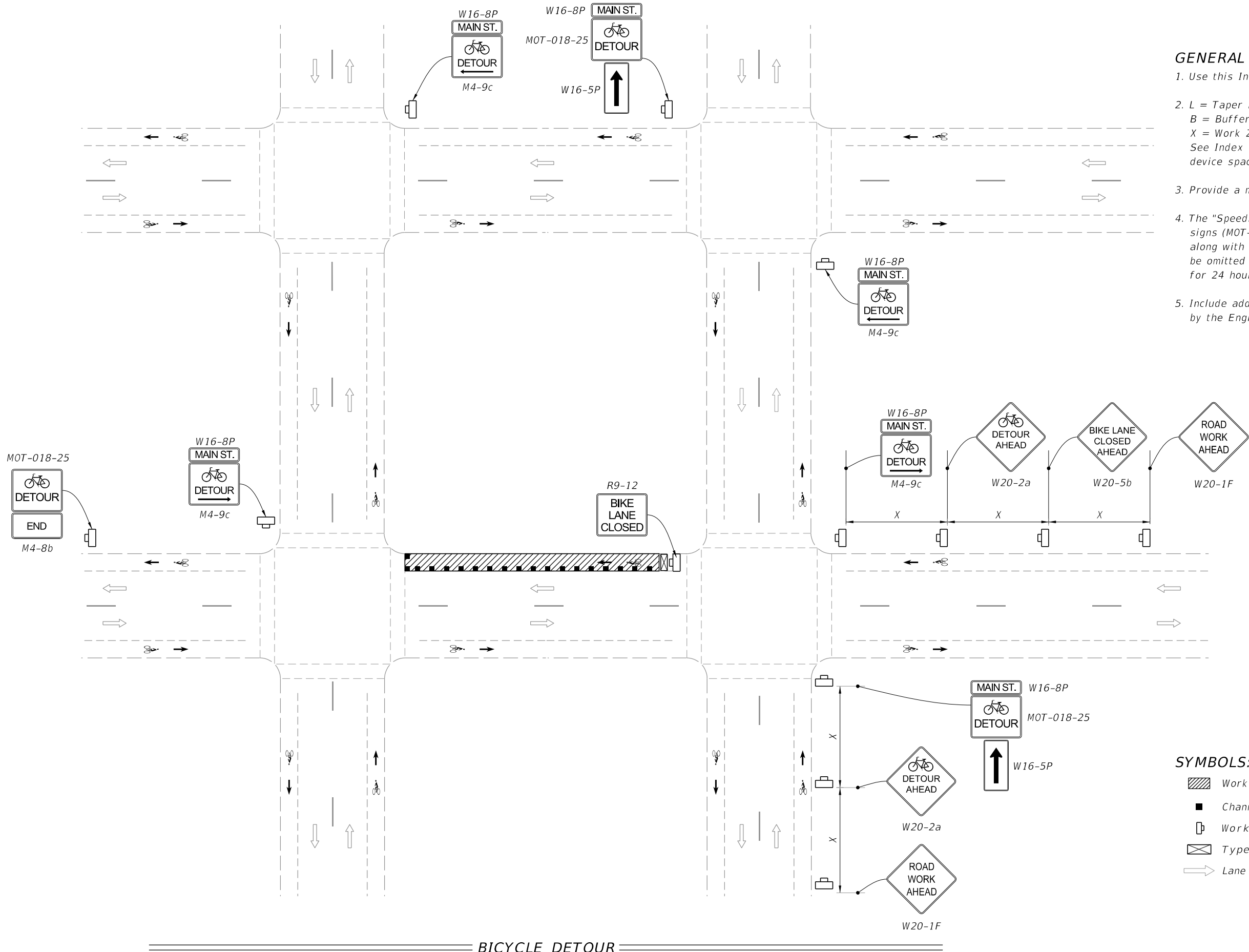


9/26/2025 11:36:27 AM



GENERAL NOTES:

1. Use this Index only when called for in the Plans.
2. L = Taper Length
 B = Buffer Length
 X = Work Zone Sign Distance
See Index 102-600 for "L", "B", "X", channelizing device spacing values.
3. Provide a minimum 5'-0" wide bicycle path.
4. The "Speeding Fines Doubled When Workers Present" signs (MOT-011A-25) and "End Road Work" signs (G20-2), along with associated work zone sign distances, may be omitted when the work operation will be in place for 24 hours or less.
5. Include additional signage at intersections as required by the Engineer or shown in the Plans.

SYMBOLS:

- Work Area
- Channelizing Device (See Index 102-600)
- Work Zone Sign
- Type III Barricade
- Lane Identification and Direction of Traffic

BICYCLE DETOUR

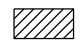





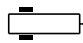
LAST REVISION	DESCRIPTION:	FDOT	FY 2026-27 STANDARD PLANS	BICYCLE FACILITY CLOSURES	INDEX	SHEET
11/01/25					102-661	1 of 2

9/26/2025 11:36:33 AM

NOTES:

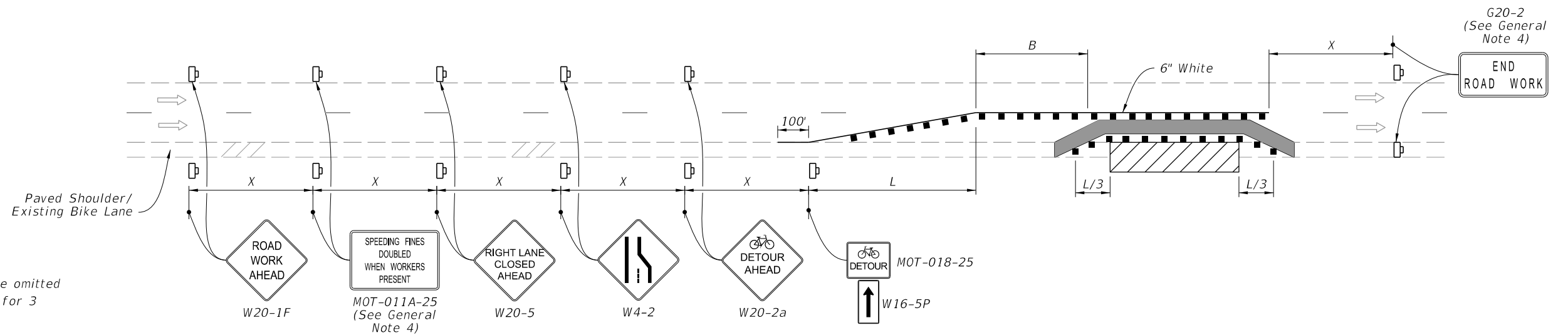
1. Temporary pavement markings may be omitted when the work operation is in place for 3 days or less.
2. If the Closed Bicycle Facility is a marked bicycle lane, use sign W20-5b instead of sign W21-5a.
3. If the travel lane is less than 14' wide, use sign R4-11.

SYMBOLS:

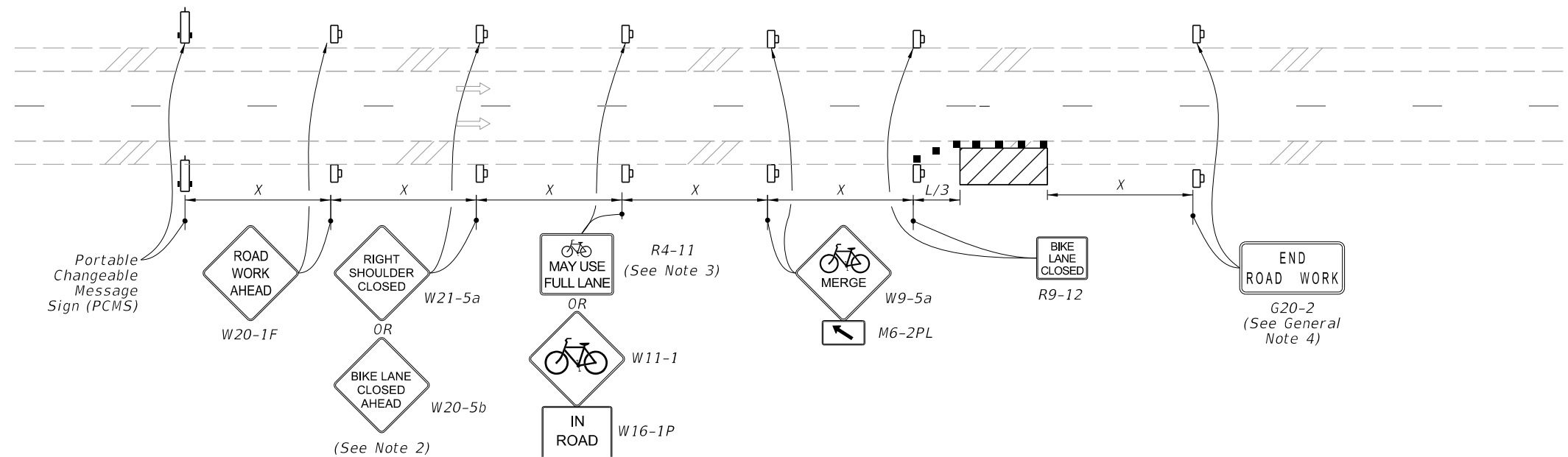
-  Work Area
-  Temporary Bicycle Way
-  Channelizing Device (See Index 102-600)
-  Work Zone Sign
-  Arrow Board
-  Lane Identification and Direction of Traffic
-  (1) PCMS=Portable Changeable (Variable) Message Sign

TYPICAL PCMS DISPLAY:

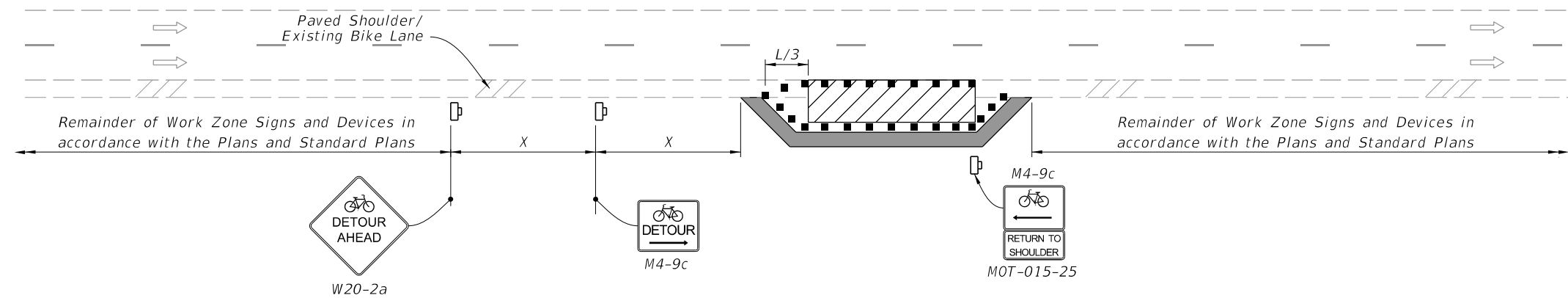
Message 1: BICYCLE FACILITY CLOSED
Message 2: BICYCLES IN ROAD




BICYCLE FACILITY SHIFT
(With Lane Closure)



BICYCLE FACILITY SHIFT
(Work Zone Speed of 35 mph or Less)



BICYCLE SPECIAL DETOUR

LAST REVISION 11/01/25	REVISION DESCRIPTION:	 FY 2026-27 STANDARD PLANS	BICYCLE FACILITY CLOSURES	INDEX 102-661	SHEET 2 of 2
------------------------------	--------------------------	--	---------------------------	------------------	-----------------