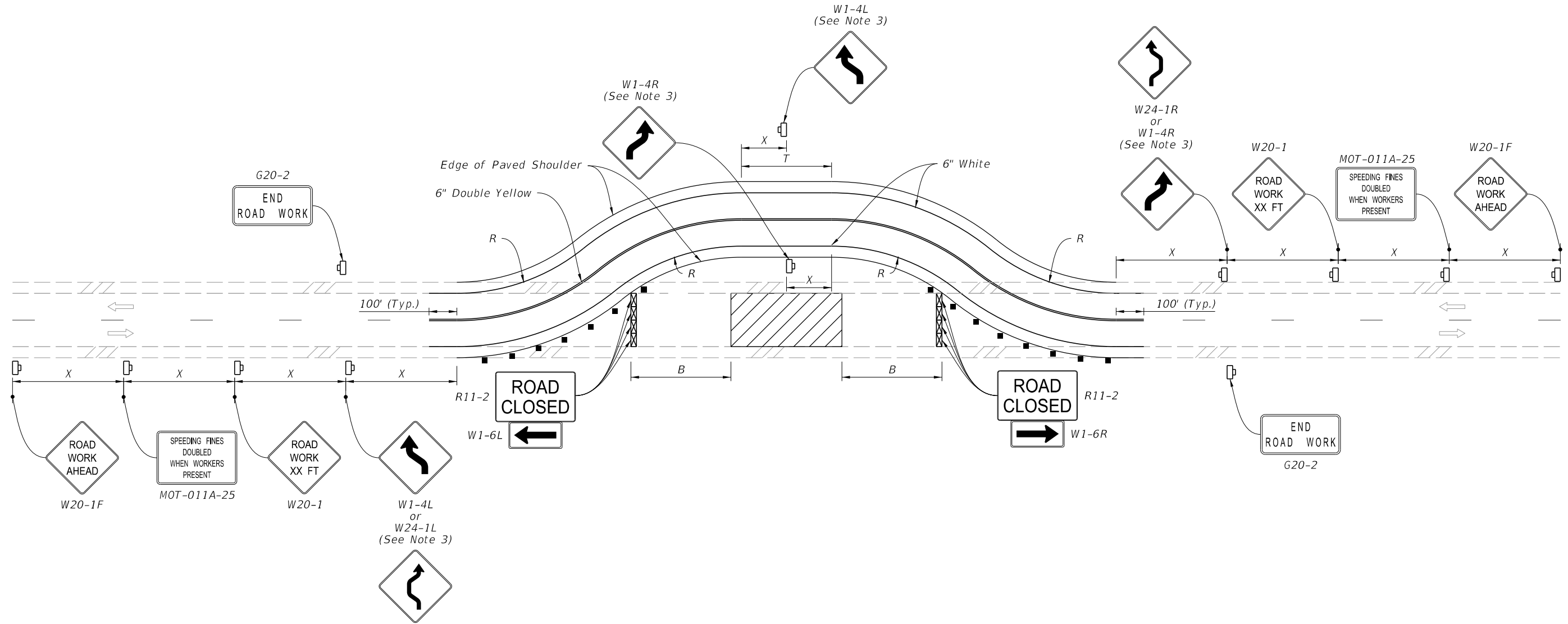


9/26/2025 11:26:29 AM



#### SYMBOLS:

- Work Area
- Channelizing Device (See Index 102-600)
- Work Zone Sign
- Type III Barricade
- Lane Identification and Direction of Traffic

#### NOTES:

- This Index applies to Two-Lane, Two-Way Roadways with temporary diversions.
- $B$  = Buffer Length  
 $X$  = Work Zone Sign Distance  
 $R$  = Radius of Curve  
See Index 102-600 for " $B$ ", " $X$ ", and channelizing device spacing values.  
See Plans for " $R$ " values.
- If the tangent distance " $T$ " is less than 600', for each direction use a "Double Reverse Curve" sign (W24-1) instead of the first "Reverse Curve" sign (W1-4) and omit the second "Reverse Curve" sign.

LAST  
REVISION  
11/01/25

REVISION  
DESCRIPTION:



FY 2026-27  
STANDARD PLANS

TWO-LANE, TWO-WAY  
TEMPORARY DIVERSION CONNECTION

INDEX  
102-608

SHEET  
1 of 1