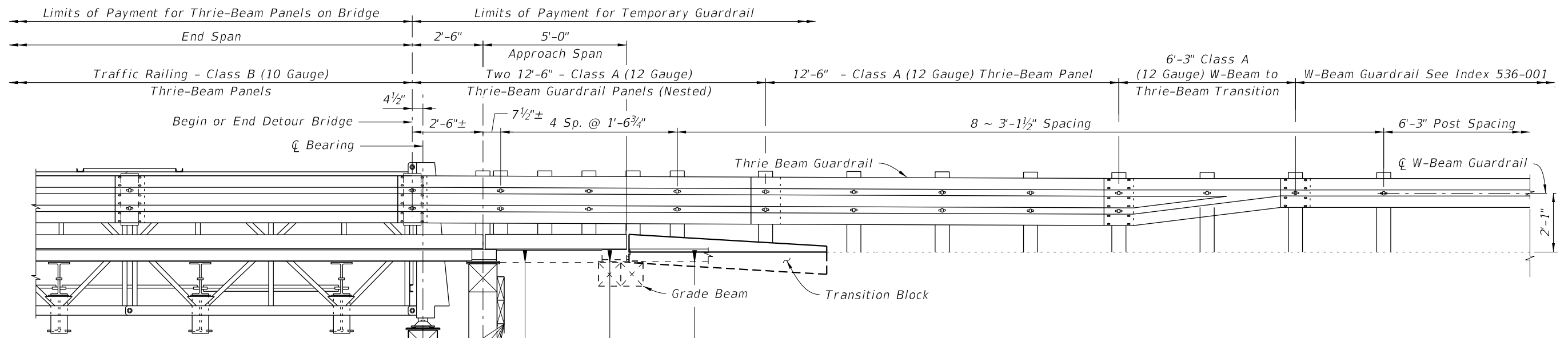



PARTIAL PLAN - APPROACH TRANSITION

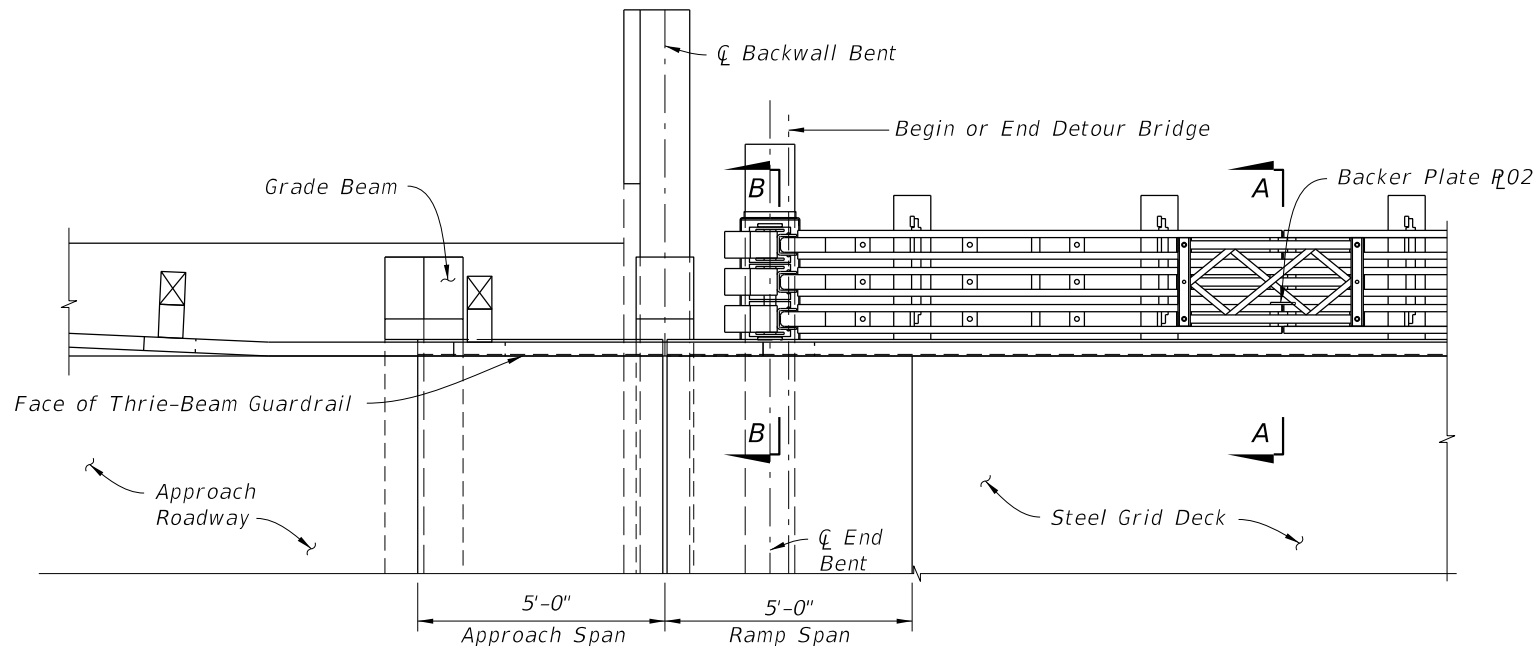


PARTIAL ELEVATION - APPROACH TRANSITION

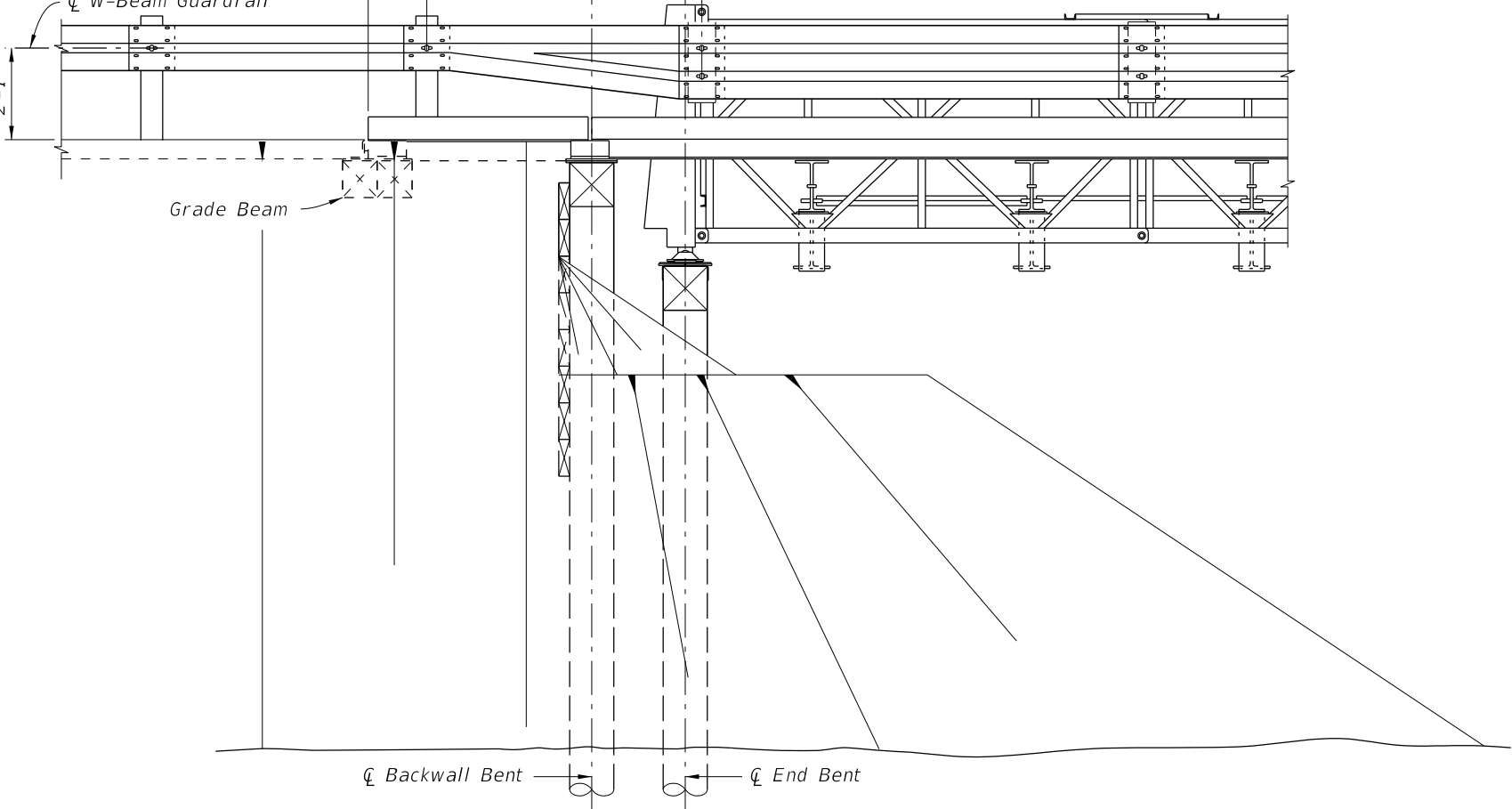
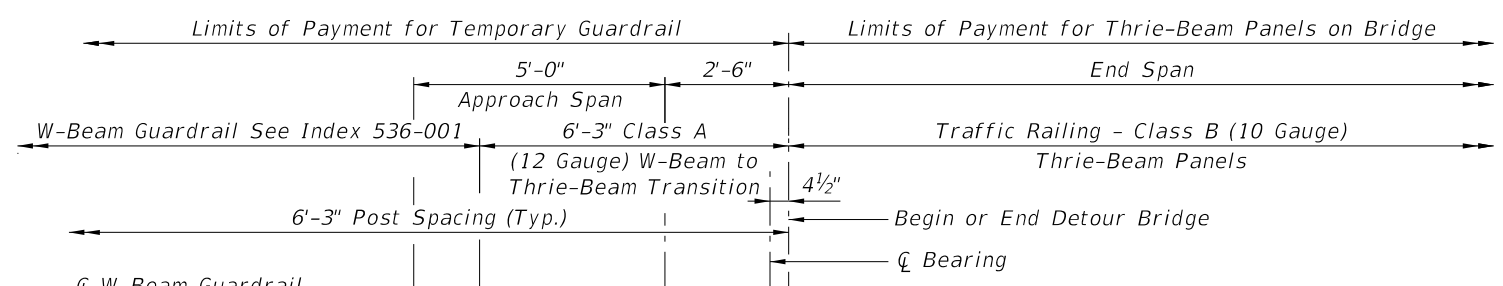
10/6/2025 2:15:28 PM

THRIE-BEAM GUARDRAIL APPROACH TRANSITION

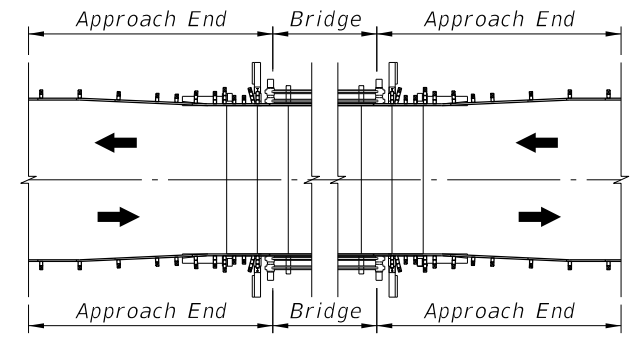
LAST REVISION 07/01/15	REVISION	DESCRIPTION:		FY 2026-27 STANDARD PLANS	TEMPORARY DETOUR BRIDGE THRIE-BEAM GUARDRAIL	INDEX 102-240	SHEET 1 of 6
---------------------------	----------	--------------	--	------------------------------	---	------------------	-----------------



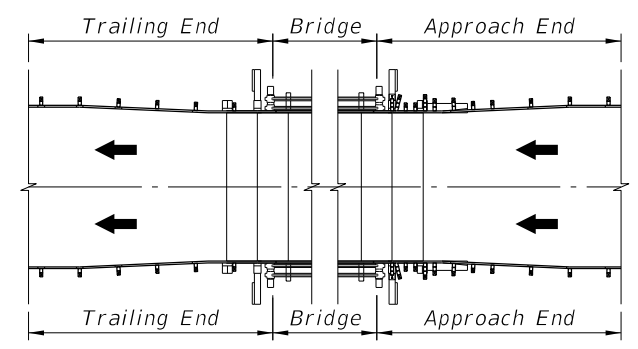
PARTIAL PLAN - TRAILING END



PARTIAL ELEVATION - TRAILING END



TWO-WAY TRAFFIC




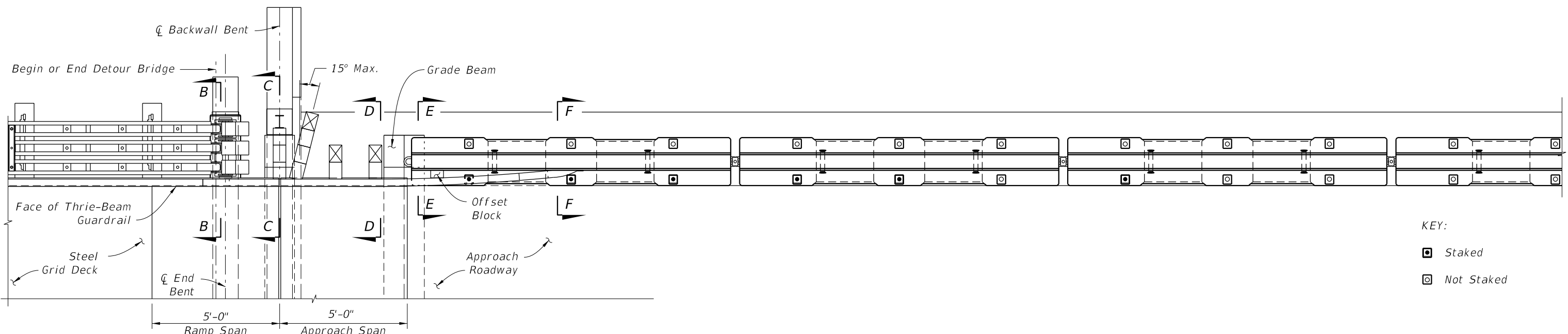
ONE-WAY TRAFFIC

END TRANSITION APPLICATION DETAILS

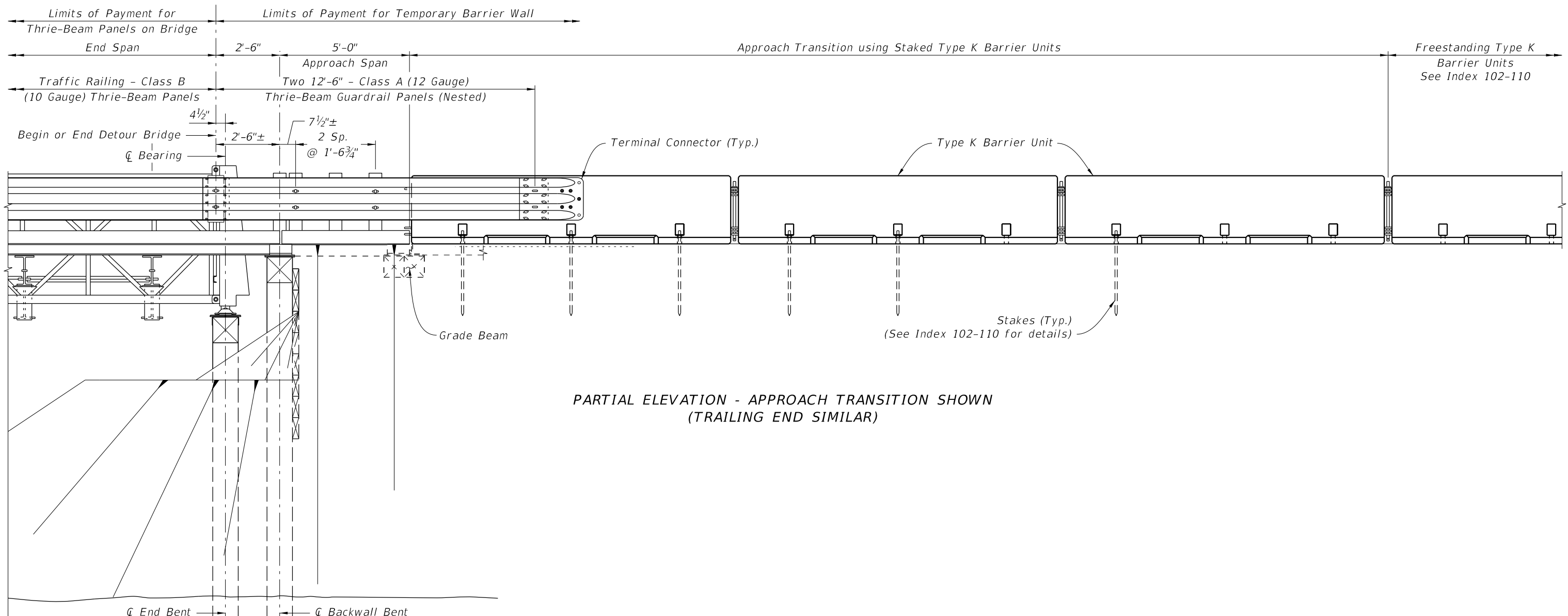
THRIE-BEAM GUARDRAIL TRAILING END TRANSITION

10/6/2025 2:15:35 PM

LAST REVISION 07/01/15	REVISION	DESCRIPTION:		FY 2026-27 STANDARD PLANS	TEMPORARY DETOUR BRIDGE THRIE-BEAM GUARDRAIL	INDEX 102-240	SHEET 2 of 6
---------------------------	----------	--------------	--	------------------------------	---	------------------	-----------------




PARTIAL PLAN - APPROACH TRANSITION SHOWN  
(TRAILING END SIMILAR)

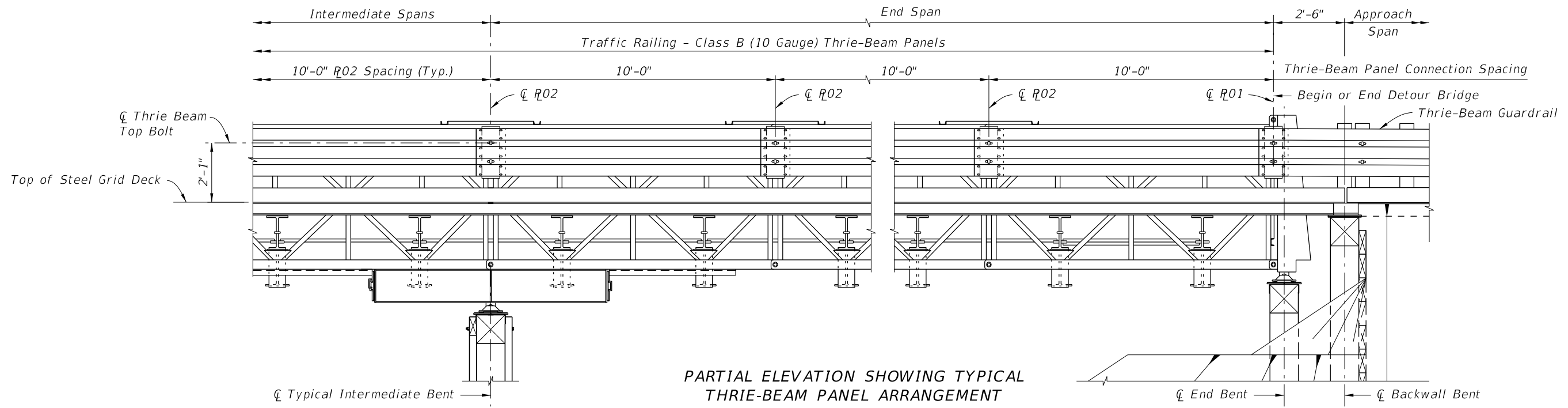


PARTIAL ELEVATION - APPROACH TRANSITION SHOWN  
(TRAILING END SIMILAR)

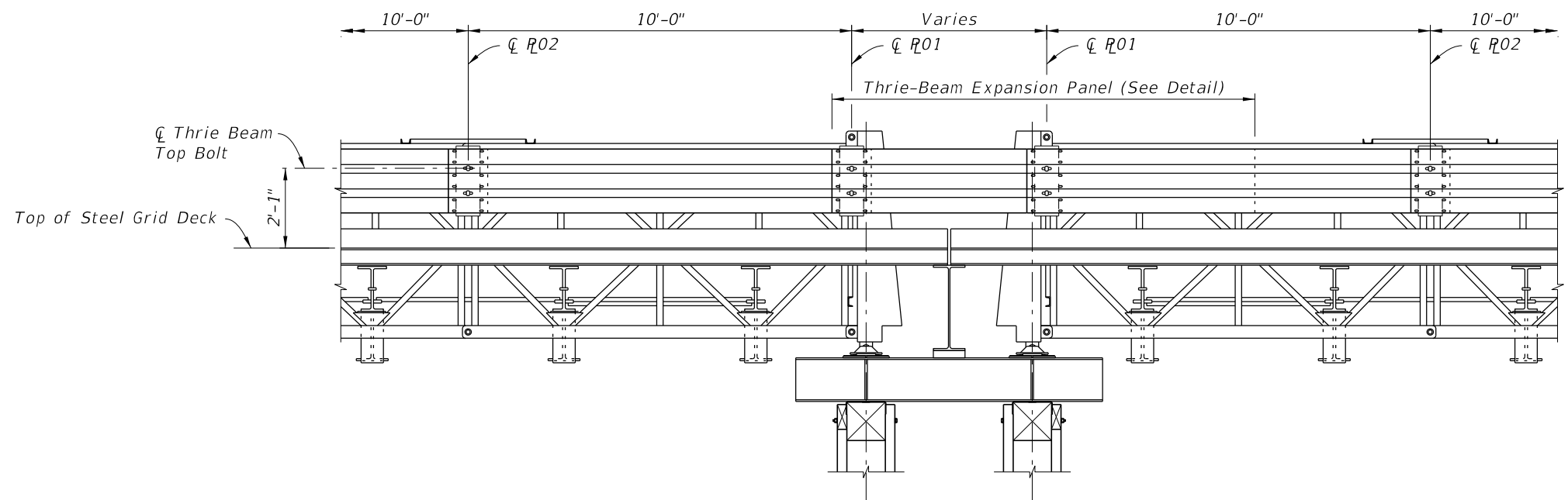
10/6/2025 2:15:42 PM

LAST REVISION 07/01/15	DESCRIPTION:		FY 2026-27 STANDARD PLANS	TEMPORARY DETOUR BRIDGE THRIE-BEAM GUARDRAIL	INDEX 102-240	SHEET 3 of 6
---------------------------	--------------	--	------------------------------	---	------------------	-----------------

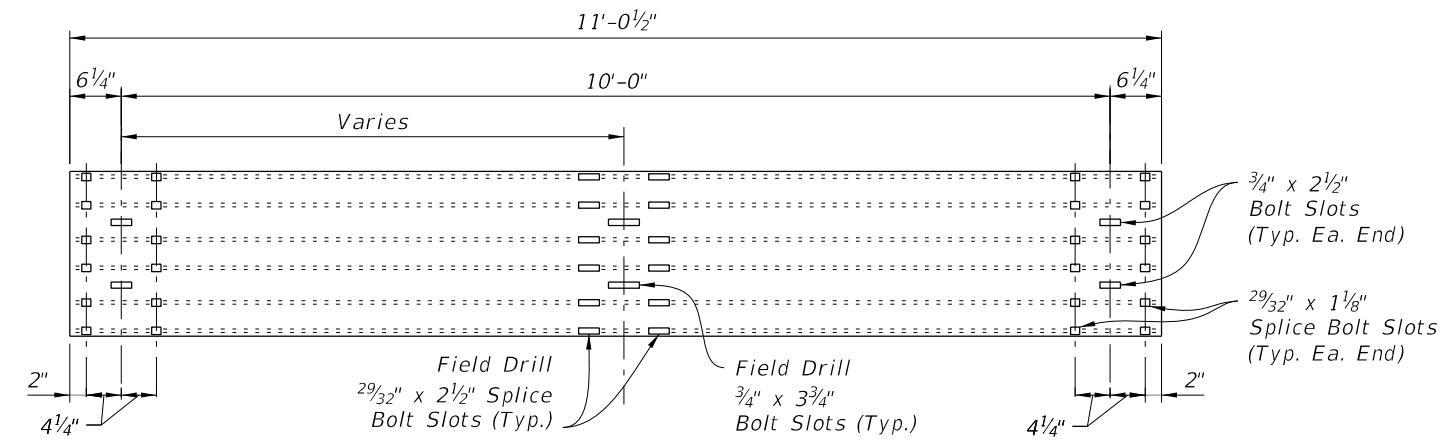
TYPE K BARRIER UNIT APPROACH TRANSITION



PARTIAL ELEVATION SHOWING TYPICAL THRIE-BEAM PANEL ARRANGEMENT




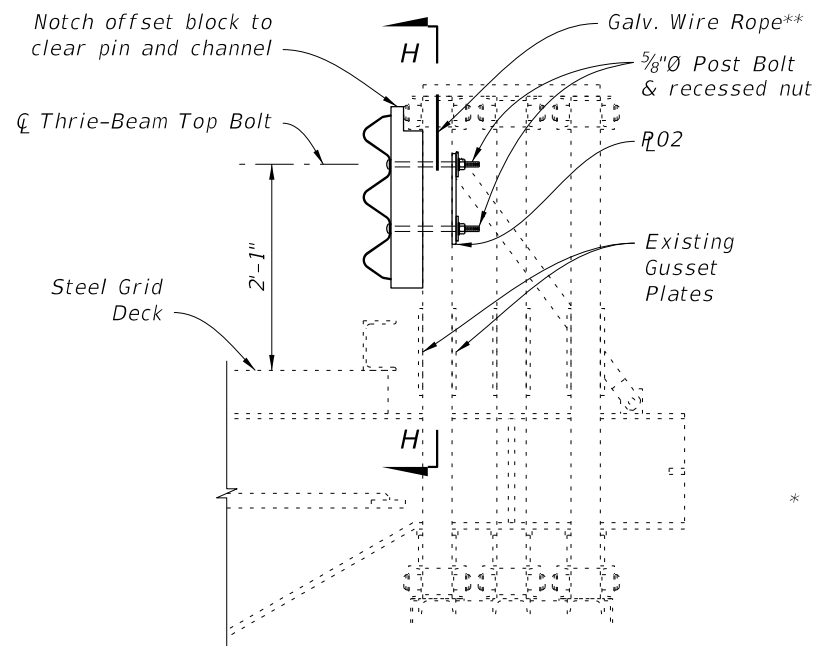
PARTIAL ELEVATION SHOWING THRIE-BEAM PANELS AT EXPANSION JOINT



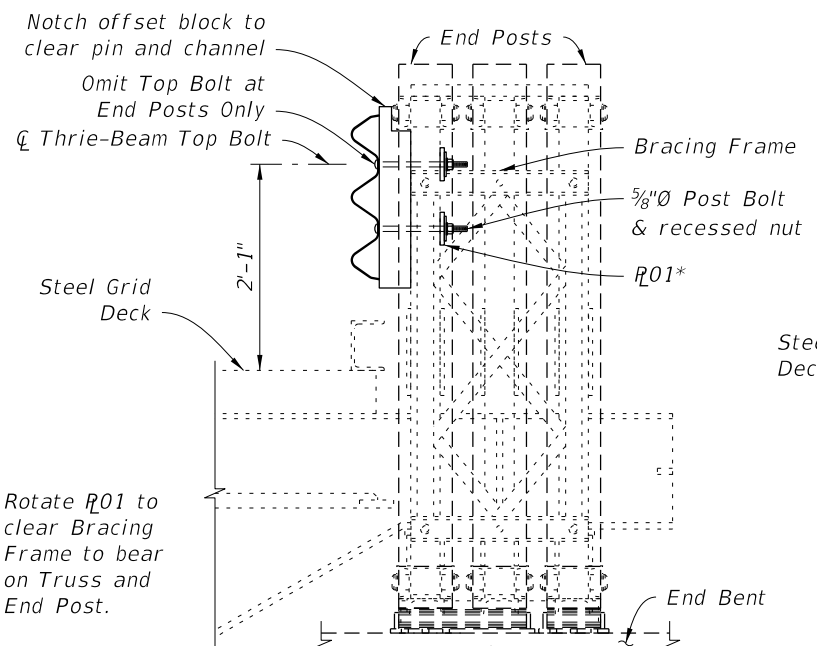
THRIE-BEAM EXPANSION PANEL DETAIL

10/6/2025 2:15:50 PM

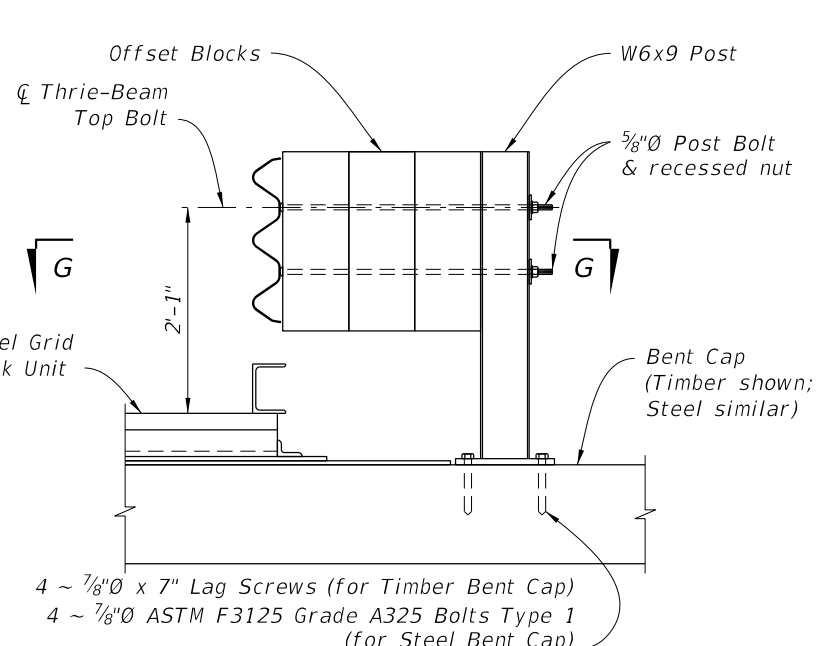
LAST REVISION 07/01/15	REVISION	DESCRIPTION:	 FY 2026-27 STANDARD PLANS	TEMPORARY DETOUR BRIDGE THRIE-BEAM GUARDRAIL	INDEX 102-240	SHEET 4 of 6
---------------------------	----------	--------------	---	---	------------------	-----------------



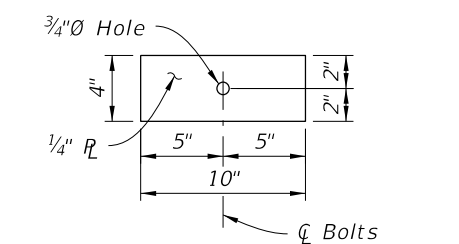
SECTION A-A



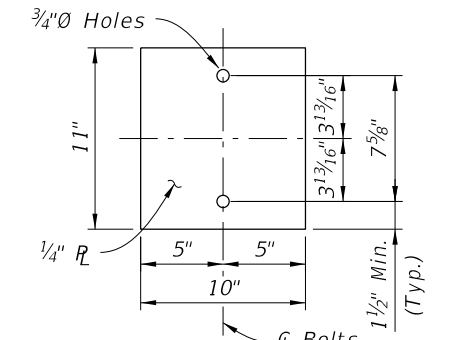
SECTION B-B



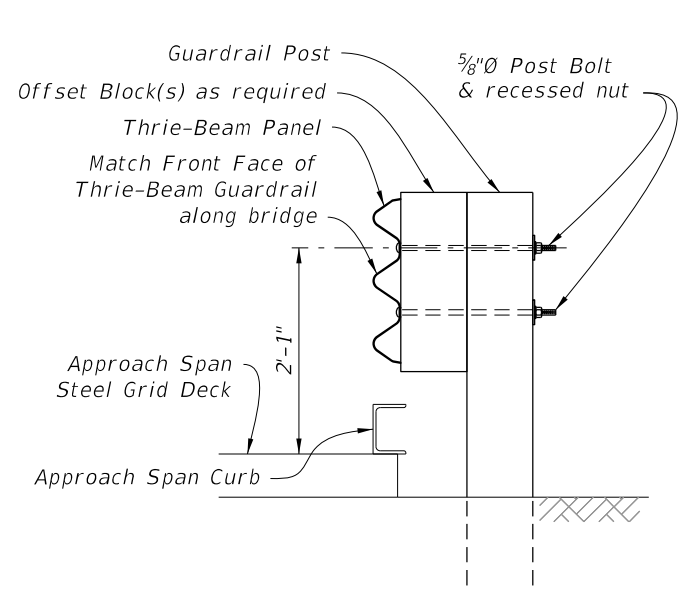
SECTION C-C



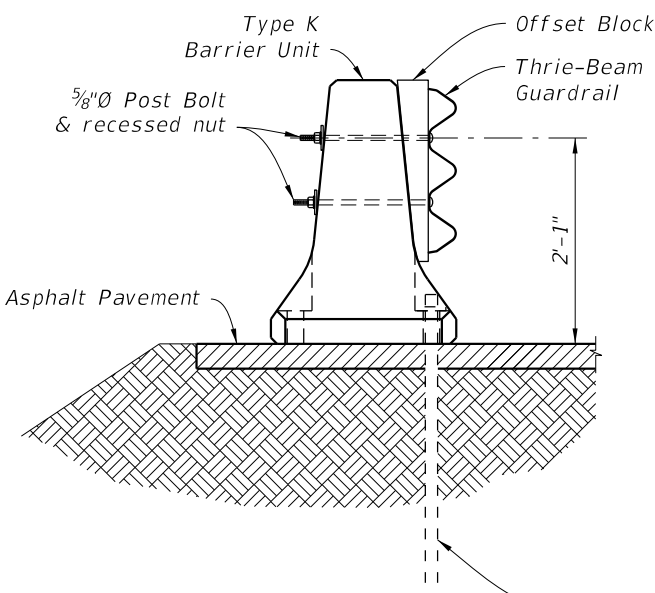
BACKER PLATE R01 DETAIL



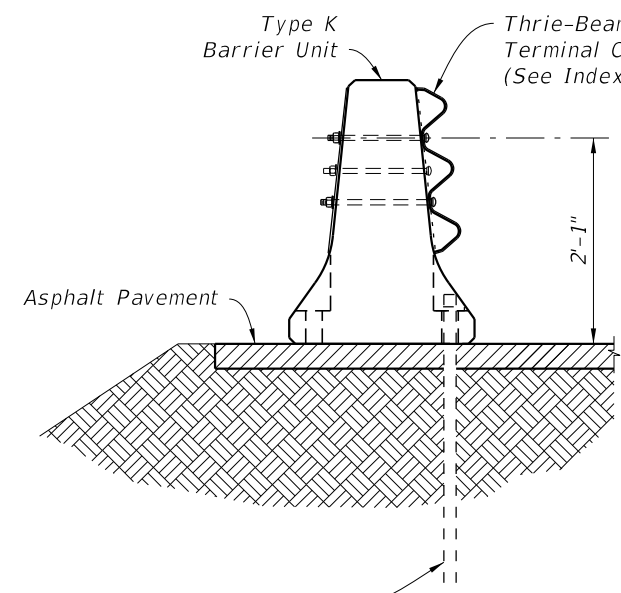
BACKER PLATE R02 DETAIL



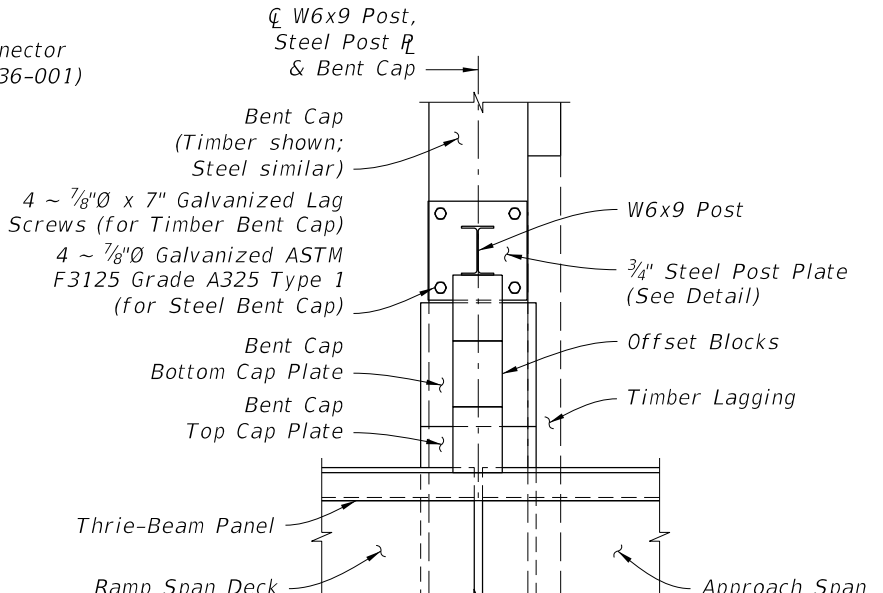
SECTION D-D



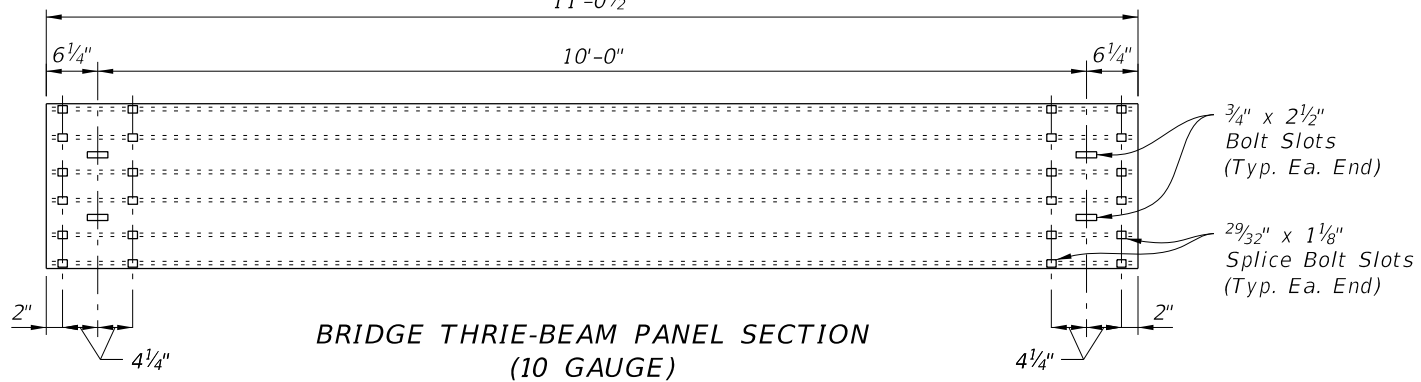
SECTION E-E



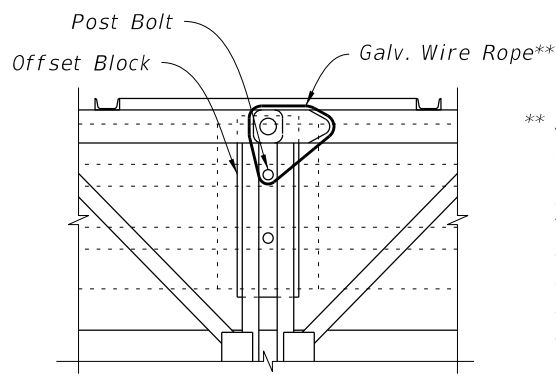
SECTION F-F



VIEW G-G  
(Adjacent Post and Offset Blocks not shown for clarity)

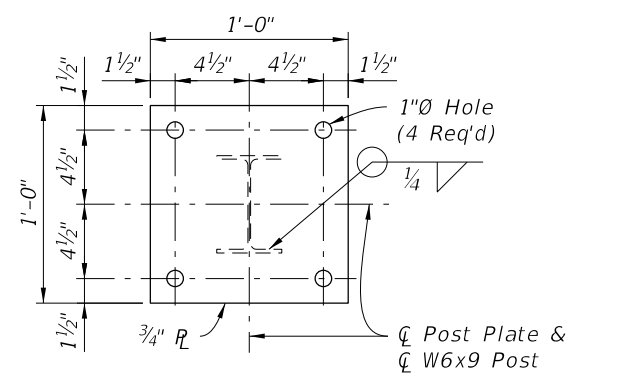


BRIDGE THRIE-BEAM PANEL SECTION  
(10 GAUGE)



SECTION H-H


\*\* As directed by the Engineer in order to limit vibration induced vertical displacement of the Thrie-Beam Panels, provide Contractor supplied, one time use, commercially available 3/16\"/>

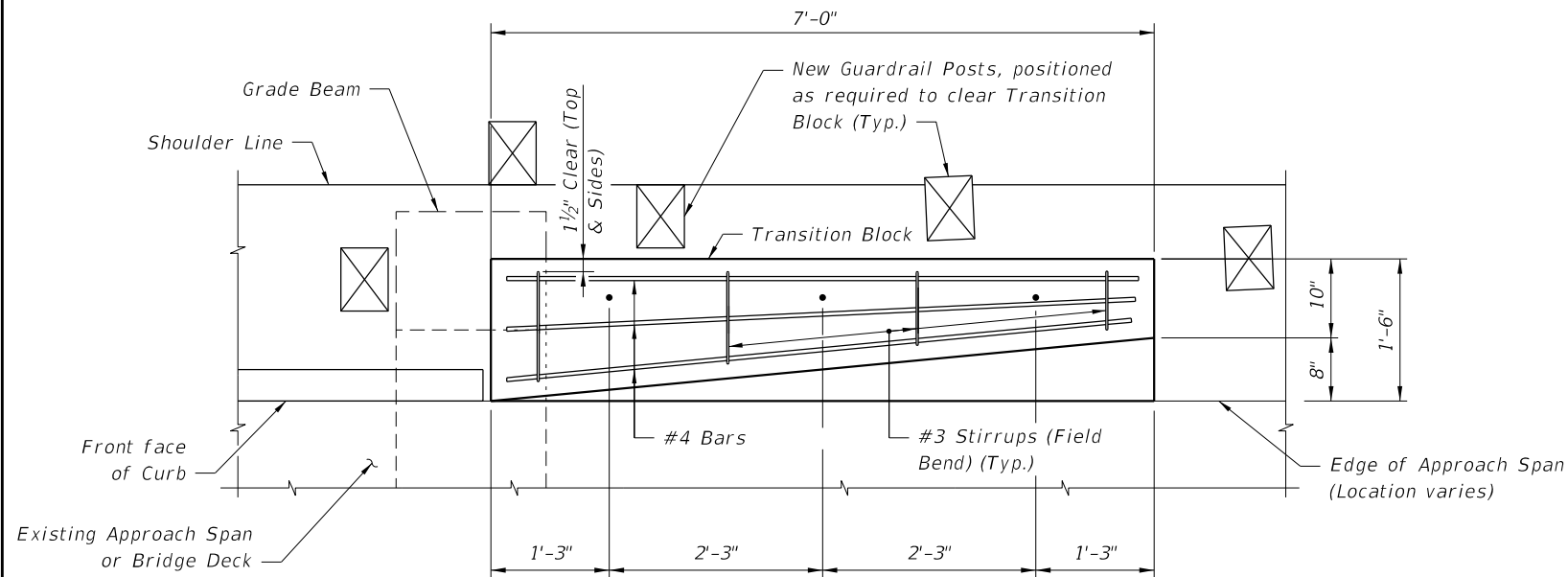


STEEL POST PLATE DETAIL

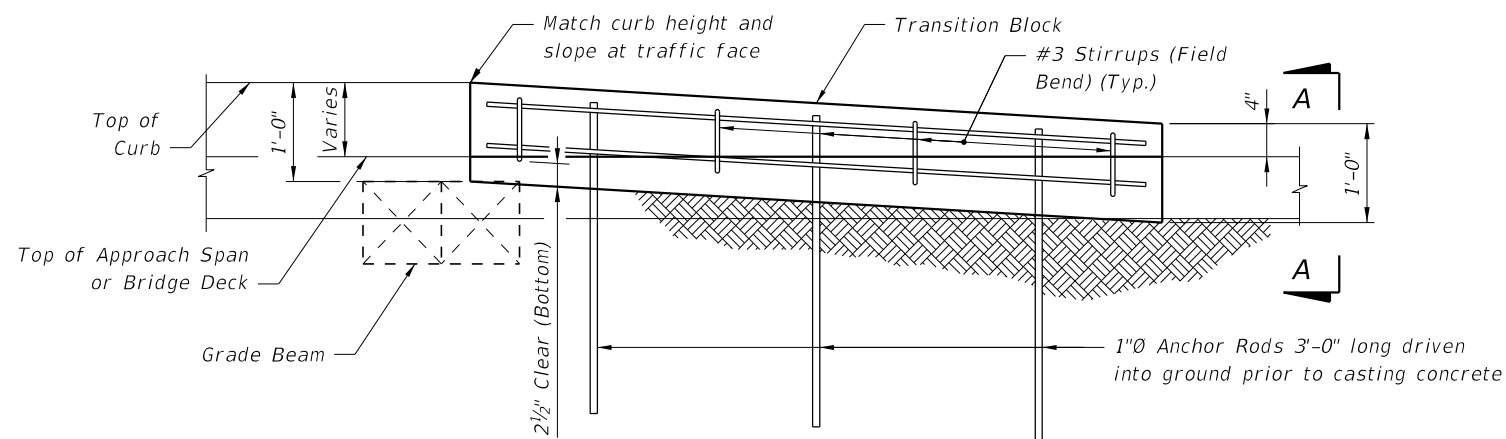
SECTIONS AND DETAILS

10/6/2025 2:15:56 PM

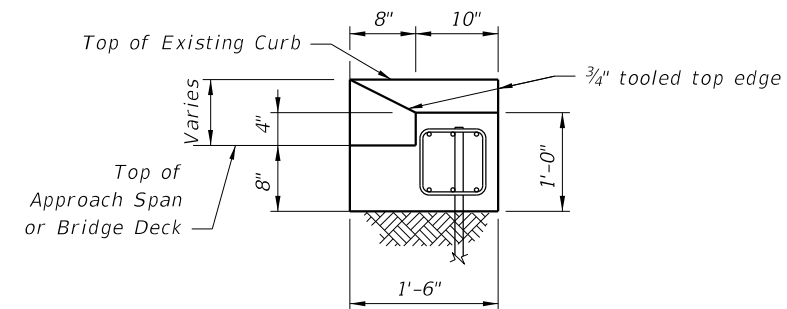
LAST REVISION 11/01/16	DESCRIPTION:	 FY 2026-27 STANDARD PLANS	TEMPORARY DETOUR BRIDGE THRIE-BEAM GUARDRAIL	INDEX 102-240	SHEET 5 of 6
---------------------------	--------------	--	---	------------------	-----------------



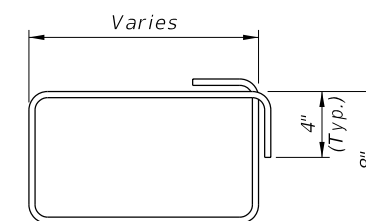
PLAN VIEW OF TRANSITION BLOCK  
(GUARDRAIL NOT SHOWN FOR CLARITY)



ELEVATION OF TRANSITION BLOCK  
(GUARDRAIL AND POSTS NOT SHOWN FOR CLARITY)



END VIEW A-A



#3 STIRRUP (FIELD BEND)

NOTES:

REINFORCING STEEL: Reinforcing steel shall be ASTM A615, Grade 60.

ANCHOR RODS: Steel Anchor Rods shall be ASTM A36, ASTM A709 Grade 36 or ASTM A615 Grade 60 hot-dip galvanized in accordance with Specification Section 962.

ESTIMATED QUANTITIES

ITEM	UNIT	QUANTITY
Concrete Class NS	CY	0.4
Reinforcing Steel	LB	61
Guardrail (Reset)	LF	12.5

10/6/2025 2:16:04 PM