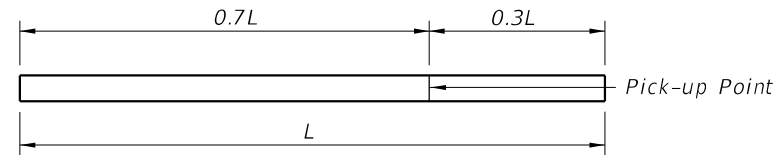
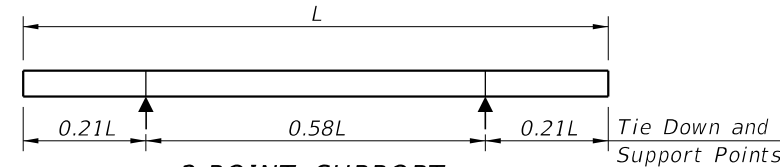


PRESTRESSED CONCRETE PILE NOTES:

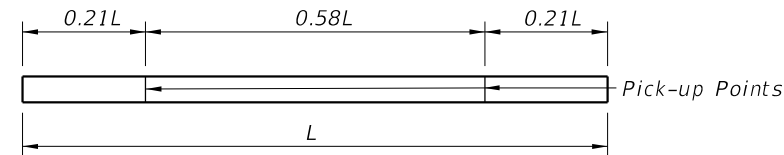
1. Work this Index with the Square Prestressed Concrete Pile Splices (Index 455-002), the Prestressed Concrete Pile Standards (Index 455-012 thru 455-030), the High Moment Capacity Square Prestressed Concrete Pile (Index 455-031) and the Pile Data Table in the Structures Plans.
2. Concrete:
 - A. Piles: Class V, except use Class VI for High Moment Capacity Pile (Index 455-031).
 - B. High Capacity Splice Collar: Class V.
 - C. See "GENERAL NOTES" in the Structures Plans for locations where the use of Highly Reactive Pozzolans is required.
3. Concrete strength at time of prestress transfer:
 - A. Piles: 4,000 psi minimum.
 - B. High Moment Capacity Piles: 6,500 psi minimum.
4. Carbon-Steel Reinforcing:
 - A. Bars: Meet the requirements of Specification Section 415.
 - B. Prestressing Strands: Meet the requirements of Specification Section 933.
 - C. Protect all strands permanently exposed to the environment and not embedded under final conditions in accordance with Specification Section 450.
5. Spiral Ties:
 - A. Tie each wrap of the spiral strand to a minimum of two corner strands.
 - B. One full turn required for spiral splices.
6. Pile Splices: Fill dowel holes and form the joint between pile sections with a Type AB Epoxy Compound in accordance with Specification Section 926. Use an Epoxy Bonding Compound or an Epoxy Mortar as recommended by the Manufacturer.



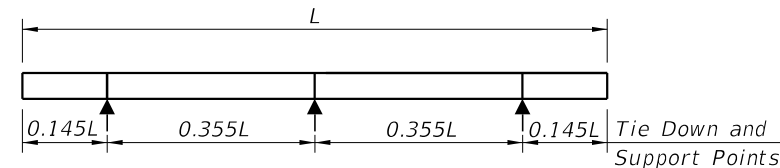
1-POINT PICK-UP



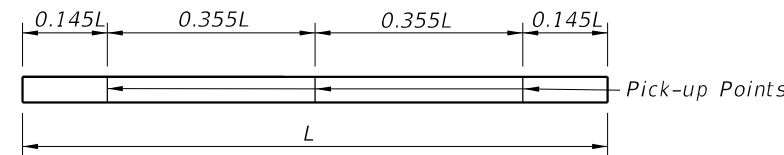
2-POINT SUPPORT



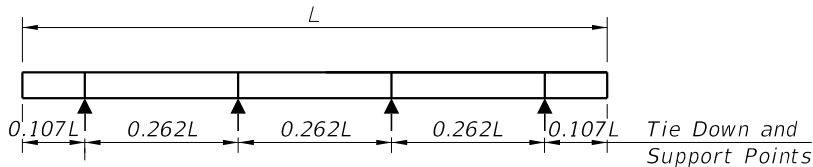
2-POINT PICK-UP



3-POINT SUPPORT



3-POINT PICK-UP

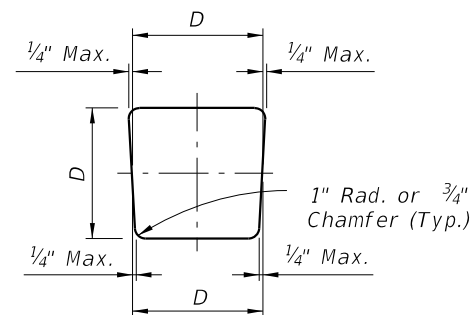


4-POINT SUPPORT

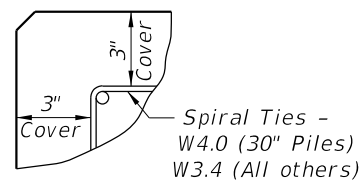
PILE PICK-UP DETAILS

STORAGE AND TRANSPORTATION SUPPORT DETAILS

| TABLE OF MAXIMUM PILE PICK-UP AND SUPPORT LENGTHS | | | | | | | |
|---|-------------------------------|-----|-----|-----|-----|--|----------------|
| | D = Square Pile Size (inches) | | | | | Required Storage and Transportation Detail | Pick-Up Detail |
| | 12 | 14 | 18 | 24 | 30 | | |
| Maximum Pile Length (Feet) | 48 | 52 | 59 | 68 | 87 | 2, 3, or 4 point | 1 Point |
| | 69 | 75 | 85 | 98 | 124 | 2, 3, or 4 point | 2 Point |
| | 99 | 107 | 121 | 140 | 178 | 3 or 4 point | 3 Point |



TYPICAL PILE SHAPE FOR MOLD FORMS



DETAIL SHOWING TYPICAL COVER

10/17/2024 9:57:19 AM