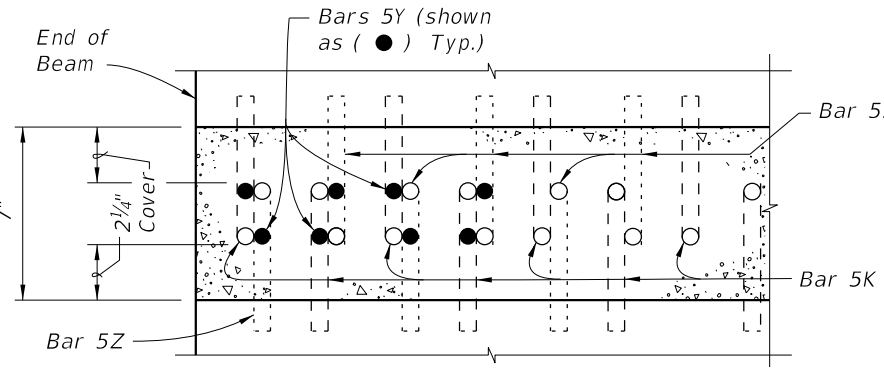
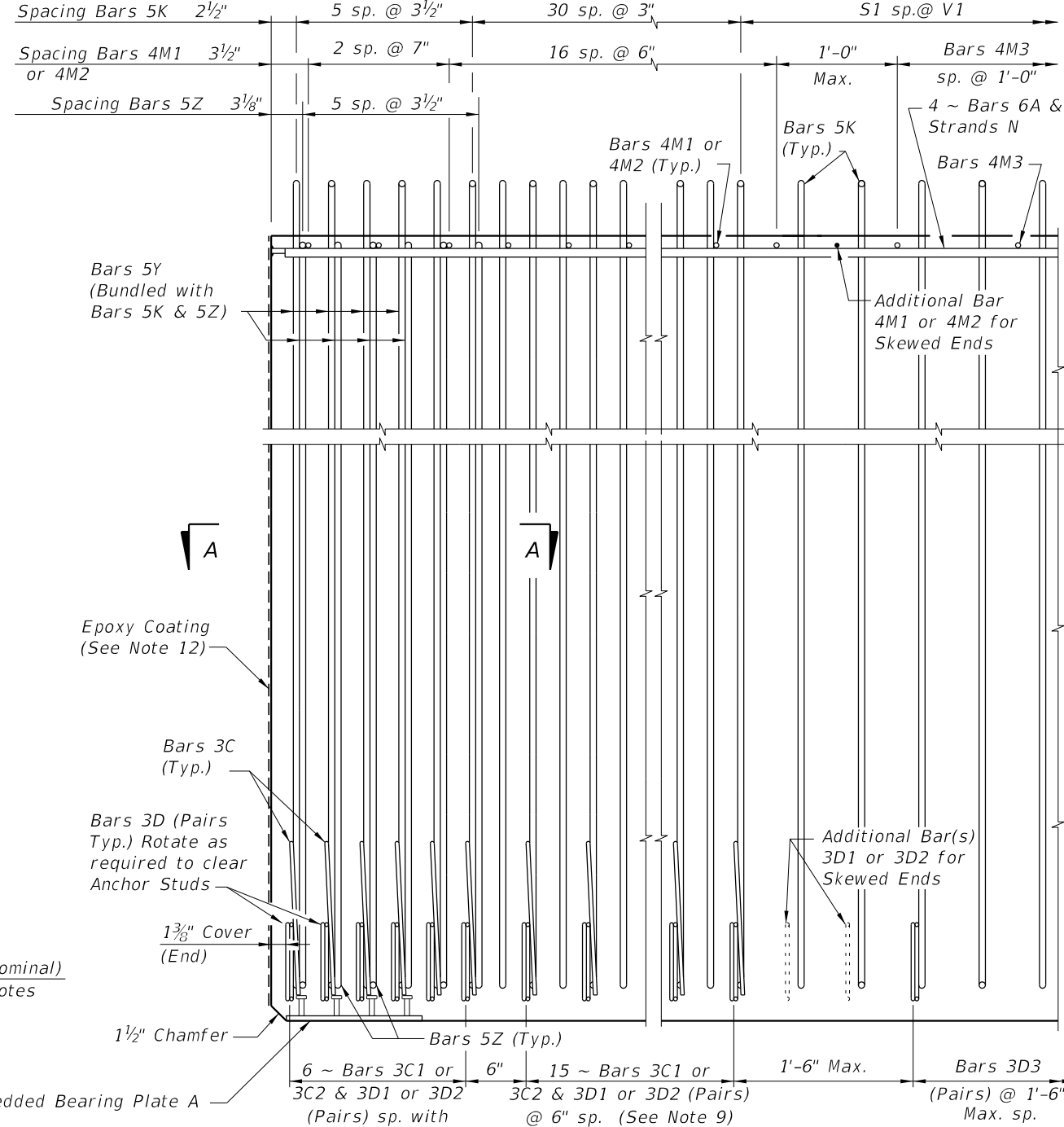


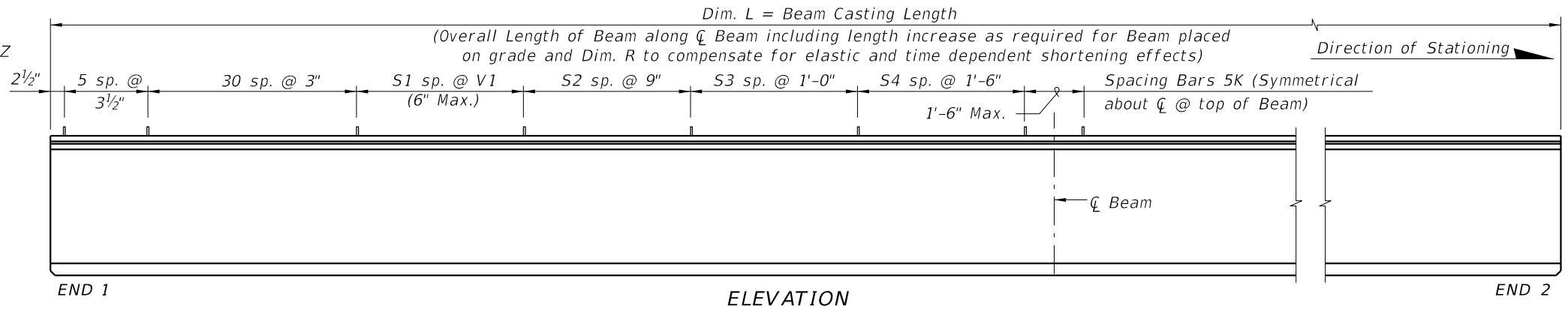
END VIEW



SECTION A-A FOR CONVENTIONAL REINFORCING (Showing Bars 5K, 5Y & 5Z Only)



ELEVATION AT END OF BEAM (Flanges Not Shown For Clarity) (End 1 Shown, End 2 Similar)



ELEVATION

**CONVENTIONAL REINFORCING BAR BENDING DETAILS**

**BILL OF REINFORCING STEEL**

MARK	NOTE NUMBERS	SIZE	NUMBER REQUIRED	LENGTH (NOTE 2)
A	—	6	8	29'-0"
C1	7, 8 & 9	3	21 (End 1)	Varies
C2	7, 8 & 9	3	21 (End 2)	Varies
D1	7, 8, 9 & 10	3	42 (End 1)	Varies
D2	7, 8, 9 & 10	3	42 (End 2)	Varies
D3	9 & 10	3	See Table	4'-3"
K	5, 6, 8, 9 & 10	5	See Table	8'-2"
M1	7 & 9	4	19 (End 1)	Varies
M2	7 & 9	4	19 (End 2)	Varies
M3	9	4	See Table	3'-8"
N	4 & 12	1/2" Ø Strand	4	Dim. L
Y	8 & 9	5	16	6'-6"
Z	5, 6, 8, 9 & 10	5	12	7'-8"

**BENDING DIAGRAMS (See Note 2)**

**BARS 6A, 4M1, 4M2, 4M3 & 5Y**

**BARS 3C1 & 3C2**

**BARS 5K & 5Z**

**BARS 3D1, 3D2 & 3D3**

**NOTES:**

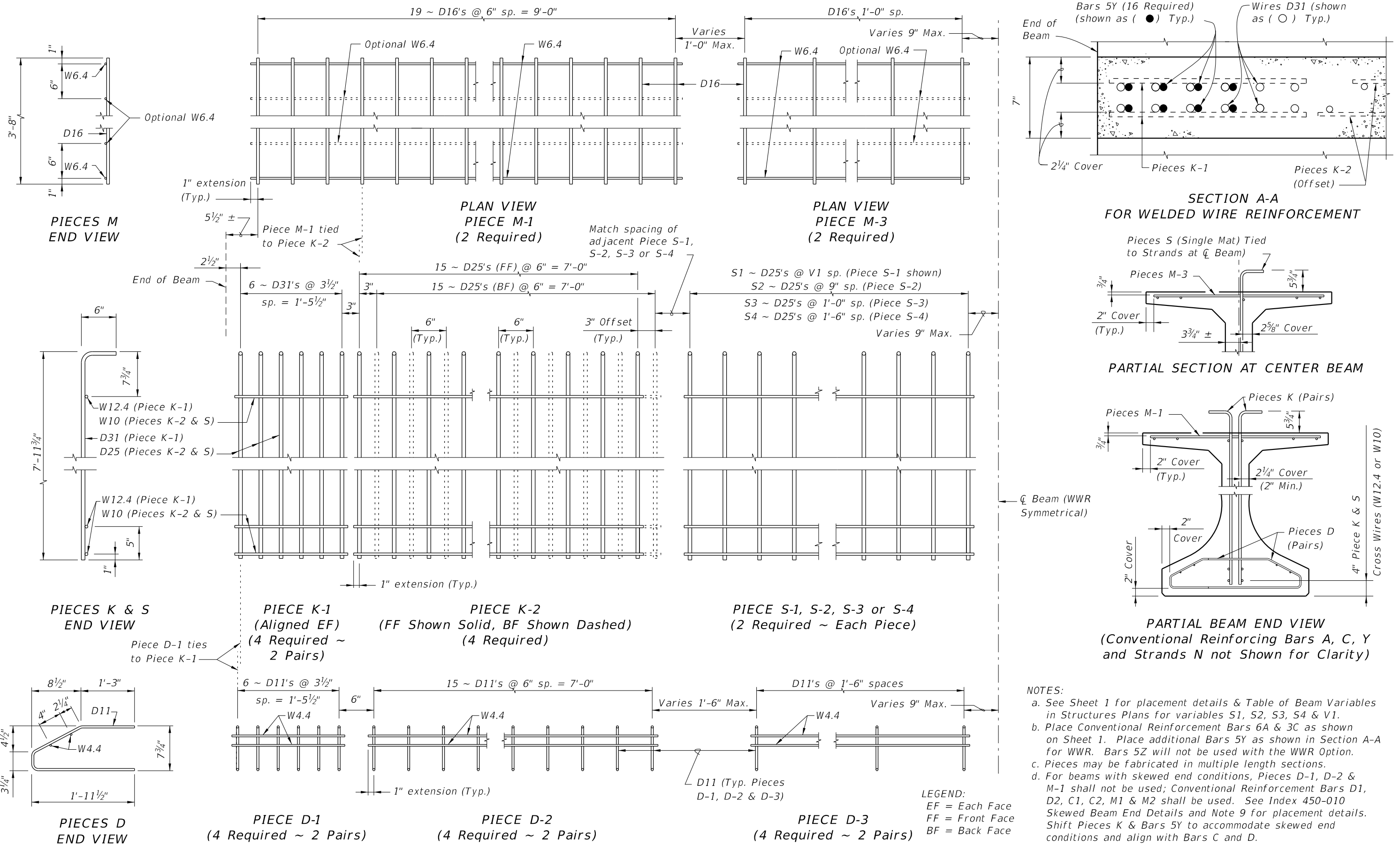
A. Work this Index with Index 450-010 - Typical Florida-I Beam Details and Notes and the Florida-I Beam - Table of Beam Variables in Structures Plans.

B. For referenced notes, see Index 450-010.

C. For Dimensions A, B, C, D, L, R & V1 and number of spaces S1 thru S4, see Florida-I Beam - Table of Beam Variables in Structures Plans.

10/17/2024 8:45:05 AM

ALTERNATE REINFORCING STEEL (WWR) DETAILS



10/17/2024 8:45:12 AM

LAST REVISION 11/01/16	DESCRIPTION:		FY 2025-26 STANDARD PLANS	FLORIDA-I 84 BEAM - STANDARD DETAILS	INDEX	SHEET
					450-084	2 of 2