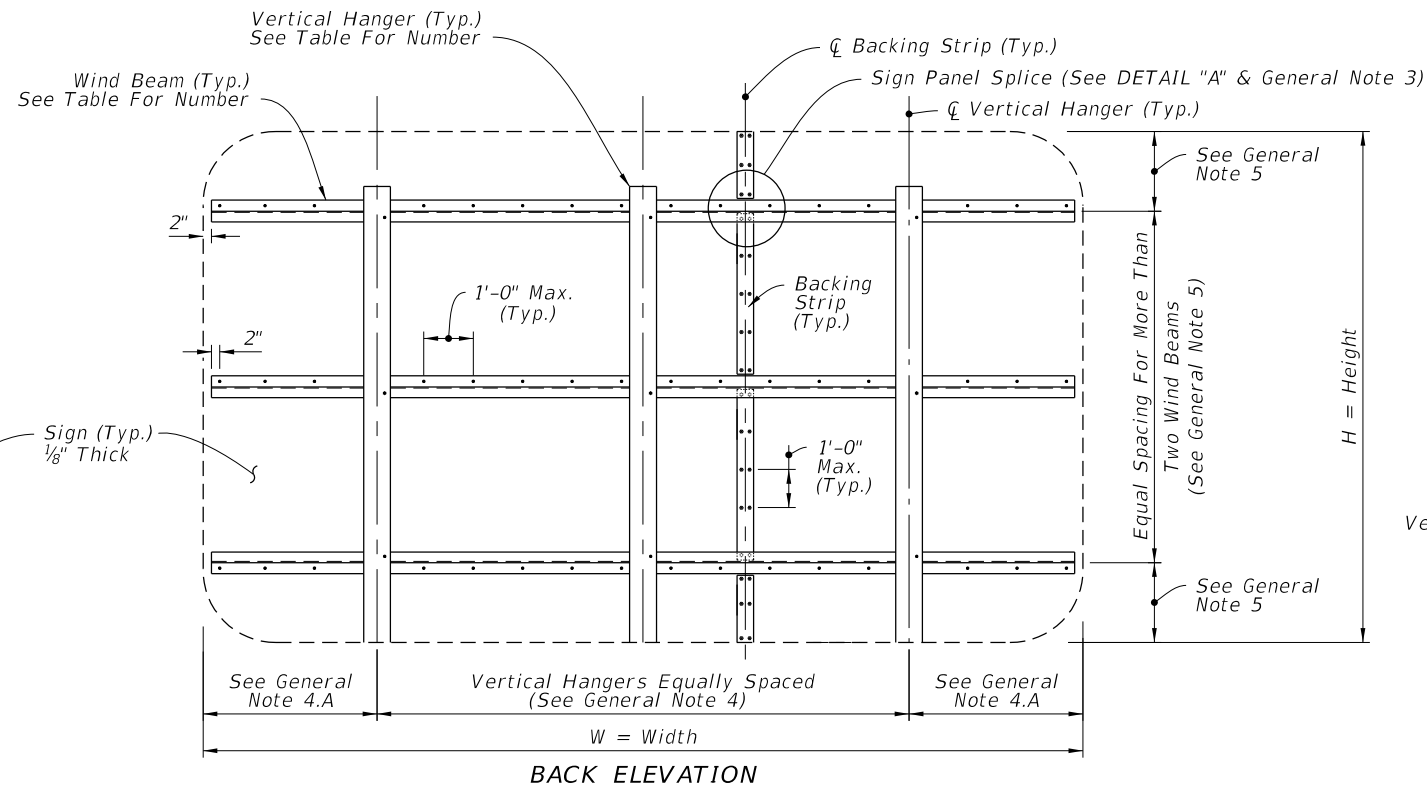
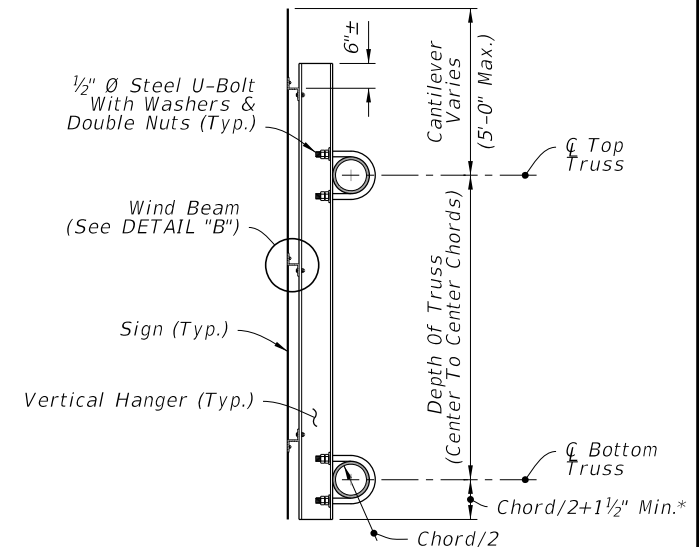


FRONT ELEVATION



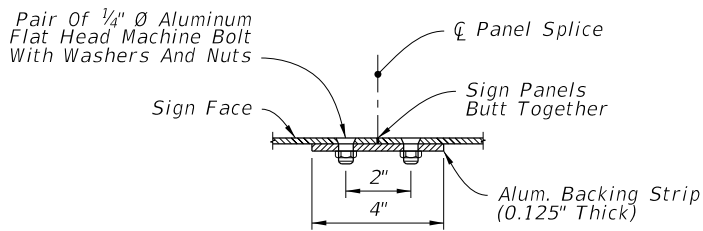
BACK ELEVATION



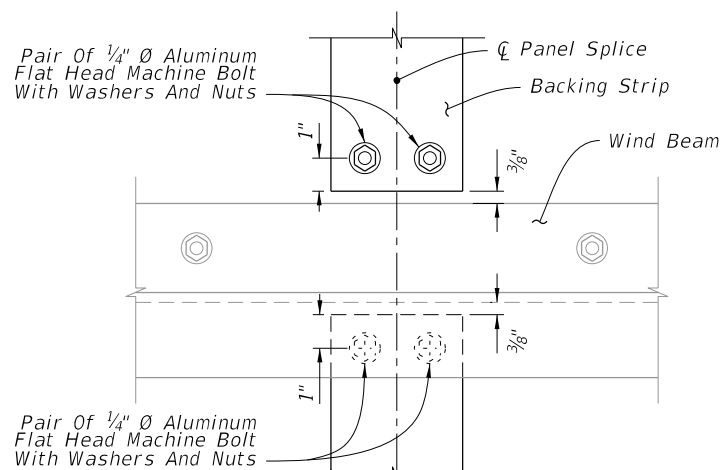
SIDE ELEVATION

\*Bottom Justified Shown, Center Justified Similar.

TYPICAL SIGN FOR OVERHEAD TRUSS



PLAN VIEW



ELEVATION

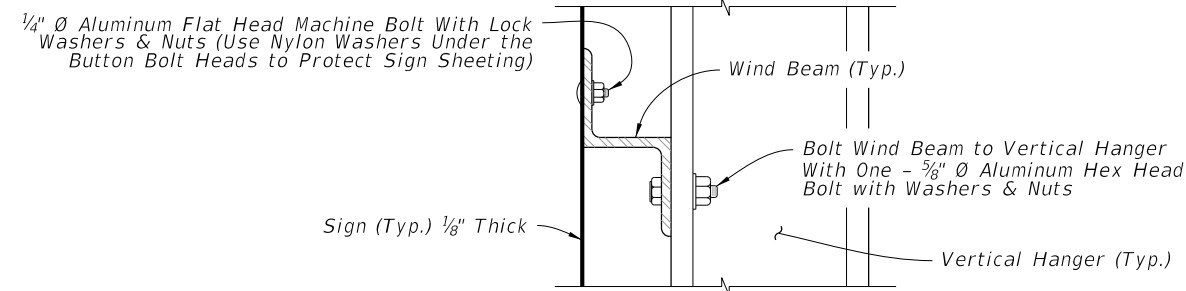
SIGN PANEL SPLICE

DETAIL "A"

WIND BEAM TABLE (Z 3 x 2 <sup>11</sup> / <sub>16</sub> x 2.33)					
Number of Horizontal Wind Beams Based on Sign Height (H)					
2 Beams	3 Beams	4 Beams	5 Beams	6 Beams	
H ≤ 5'	5' < H ≤ 9'	9' < H ≤ 12'	12' < H ≤ 15'	15' < H ≤ 18'	

HANGER TABLE (I 6 X 4 x 4.69 or Z 5 x 3 <sup>1</sup> / <sub>4</sub> x 4.01)					
Number of Vertical Hanger Beams Based on Wind Speed and Sign Width (W)					
	2 Hangers	3 Hangers	4 Hangers	5 Hangers	6 Hangers
130 mph	W ≤ 20'	20' < W ≤ 30'	30' < W ≤ 40'	40' < W ≤ 50'	--
150 mph	W ≤ 18'	18' < W ≤ 27'	27' < W ≤ 35'	35' < W ≤ 45'	45' < W ≤ 50'
170 mph	W ≤ 15'	15' < W ≤ 20'	20' < W ≤ 28'	28' < W ≤ 35'	35' < W ≤ 43'

NOTE: For Monroe County designs, use 170 mph values but with Z 5 x 3-1/4 x 6.19 vertical hanger beams only.



DETAIL "B"

GENERAL NOTES

1. Meet the requirements of Specification 700.
2. Work this Index with Index 700-040 and 700-041.
3. The number and location of the Panel Splices are determined by the Sign Face supplier.
4. Spacing of Vertical Hangers:
  - A. Two Vertical Hanger = 21.0% W
  - Three Vertical Hanger = 15.0% W
  - Four Vertical Hanger = 11.0% W
  - Five Vertical Hanger = 9.0% W
  - Six Vertical Hanger = 7.0% W
  - B. Spacing of vertical hangers may be varied slightly as necessary to clear the truss struts and diagonals at panel points
5. Spacing of Wind Beams:
  - Two Wind Beams = 21.0% H
  - Three Wind Beams = 15.0% H
  - Four Wind Beams = 11.0% H
  - Five Wind Beams = 9.0% H
  - Six Wind Beams = 7.0% H
6. Shop Drawings:
  - A. Required for Sign Panels deeper than 10'-0" with a horizontal panel splice.
  - B. Splice must be located in between interior Zee Supports and only allowed on signs greater than 10'-0".
7. Wind Speed by county: see Index 715-010.

10/3/2023 3:02:27 PM