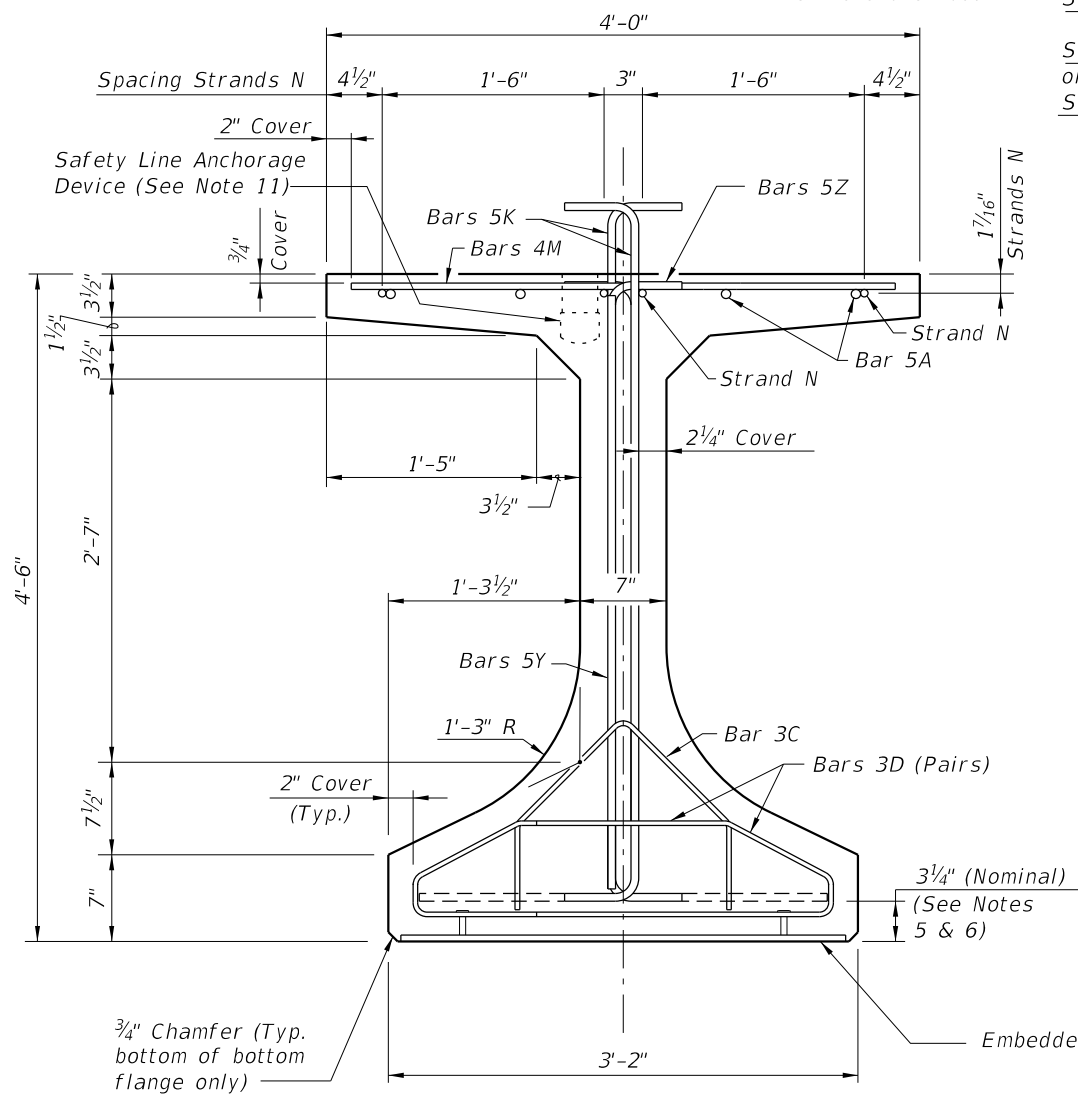
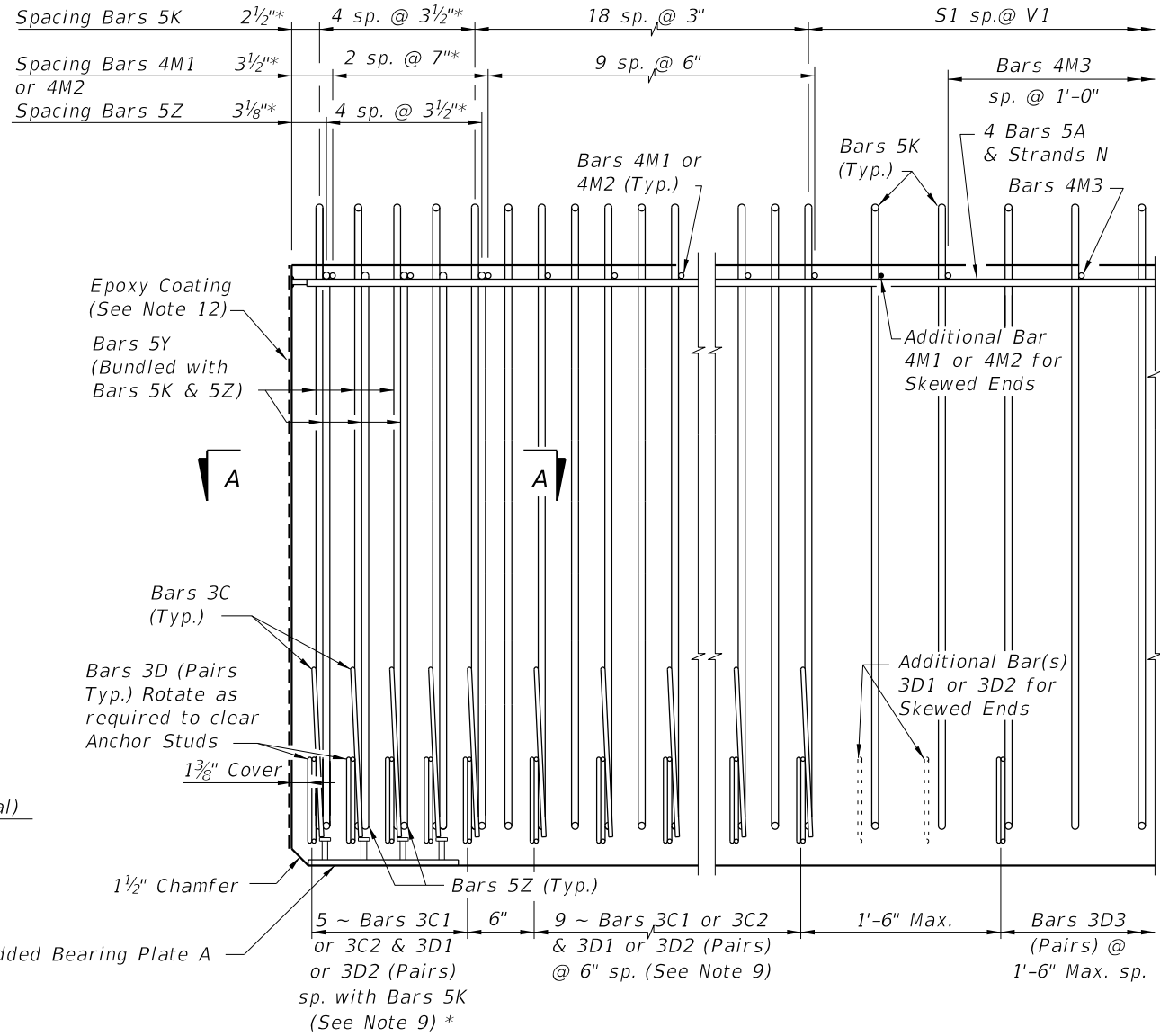


\* These dimensions are measured perpendicular to the end of beam



END VIEW

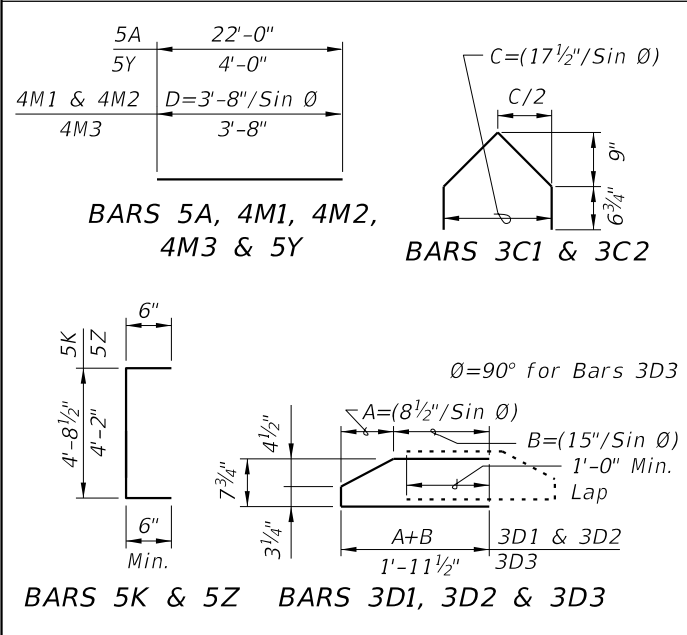


ELEVATION AT END OF BEAM  
(Flanges Not Shown For Clarity)  
(End 1 Shown, End 2 Similar)

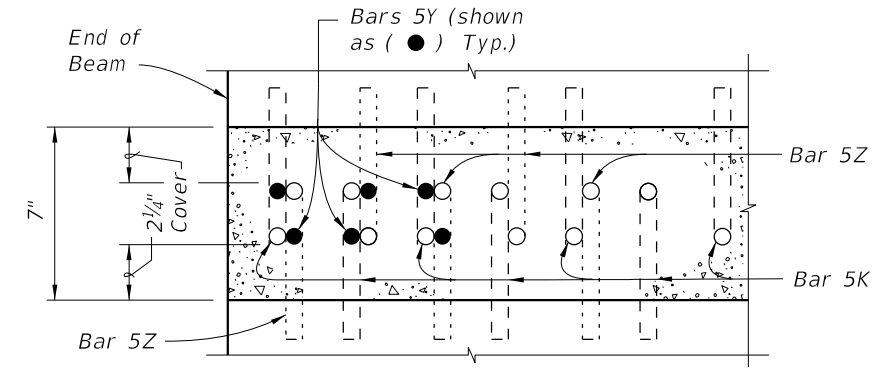
CONVENTIONAL REINFORCING  
BAR BENDING DETAILS

BILL OF REINFORCING STEEL				
MARK	NOTE NUMBERS	SIZE	NUMBER REQUIRED	LENGTH (NOTE 2)
A	—	5	8	22'-0"
C1	7, 8 & 9	3	14 (End 1)	Varies
C2	7, 8 & 9	3	14 (End 2)	Varies
D1	7, 8, 9 & 10	3	28 (End 1)	Varies
D2	7, 8, 9 & 10	3	28 (End 2)	Varies
D3	9 & 10	3	See Table	4'-3"
K	5, 6, 8, 9 & 10	5	See Table	5'-8"
M1	7 & 9	4	12 (End 1)	Varies
M2	7 & 9	4	12 (End 2)	Varies
M3	9	4	See Table	3'-8"
N	4 & 12	3/8" Ø Strand	4	Dim. L
Y	8 & 9	5	12	4'-0"
Z	5, 6, 8, 9 & 10	5	10	5'-2"

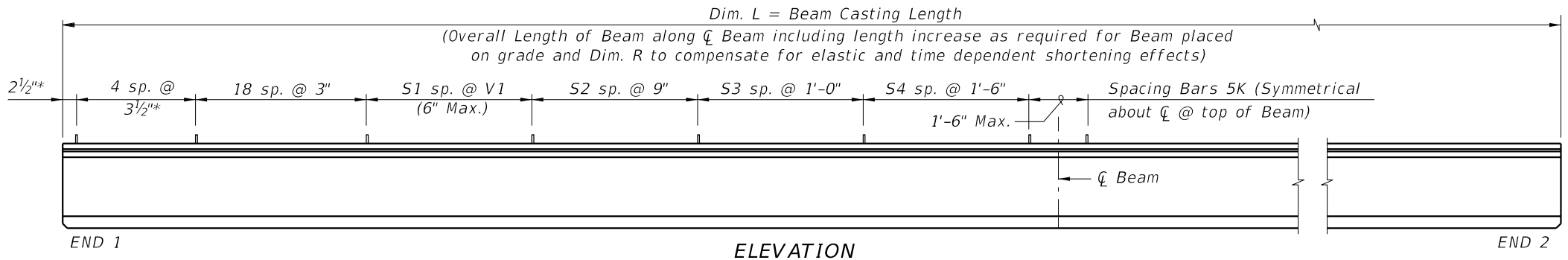
BENDING DIAGRAMS (See Note 2)



- NOTES:
- A. Work this Index with Index 450-010 - Typical Florida-I Beam Details and Notes and the Florida-I Beam - Table of Beam Variables in Structures Plans.
  - B. For referenced notes, see Index 450-010.
  - C. For Dimensions A, B, C, D, L, R & V1 and number of spaces S1 thru S4, see Florida-I Beam - Table of Beam Variables in Structures Plans.



SECTION A-A FOR CONVENTIONAL REINFORCING  
(Showing Bars 5K, 5Y & 5Z Only)

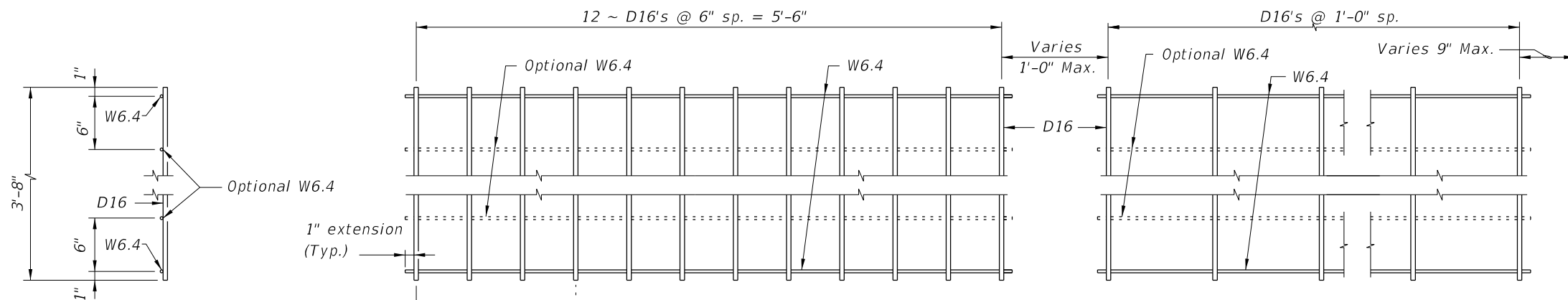


ELEVATION

10/15/2023 11:27:09 AM

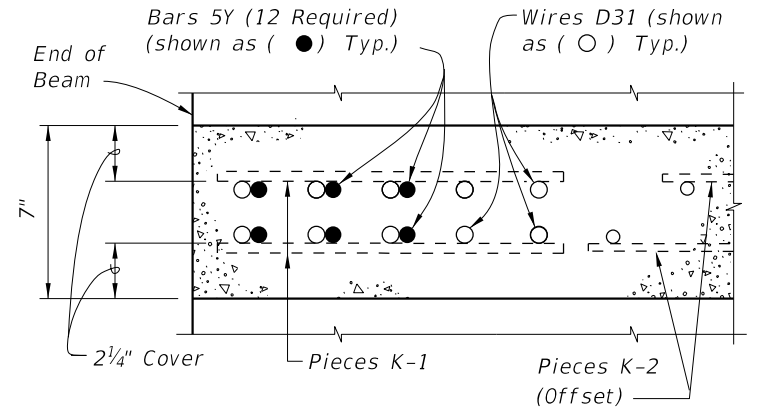
LAST REVISION 11/01/19	DESCRIPTION:
---------------------------	--------------

ALTERNATE REINFORCING STEEL (WWR) DETAILS

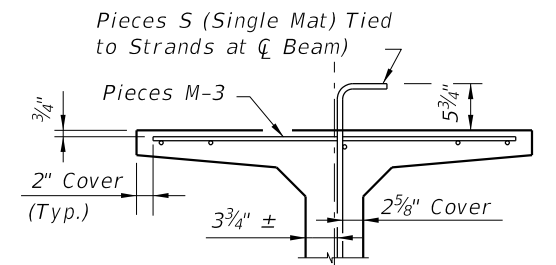


PLAN VIEW  
PIECE M-1  
(2 Required)

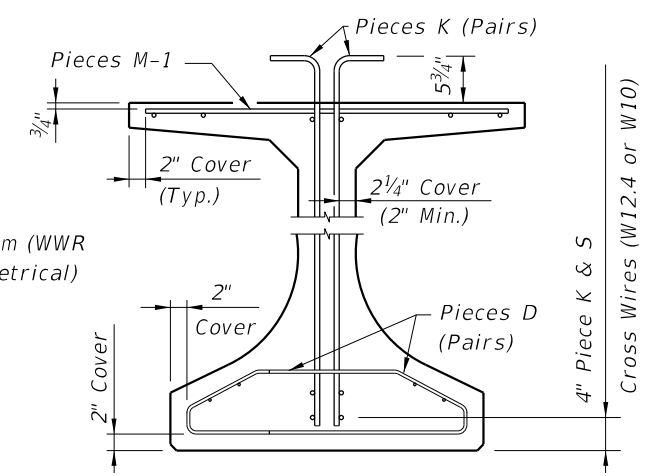
PLAN VIEW  
PIECE M-3  
(2 Required)



SECTION A-A  
FOR WELDED WIRE REINFORCEMENT



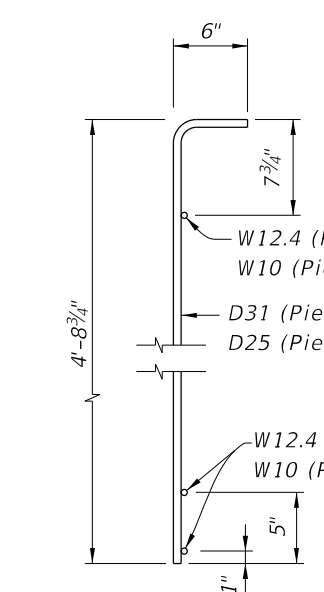
PARTIAL SECTION AT CENTER BEAM



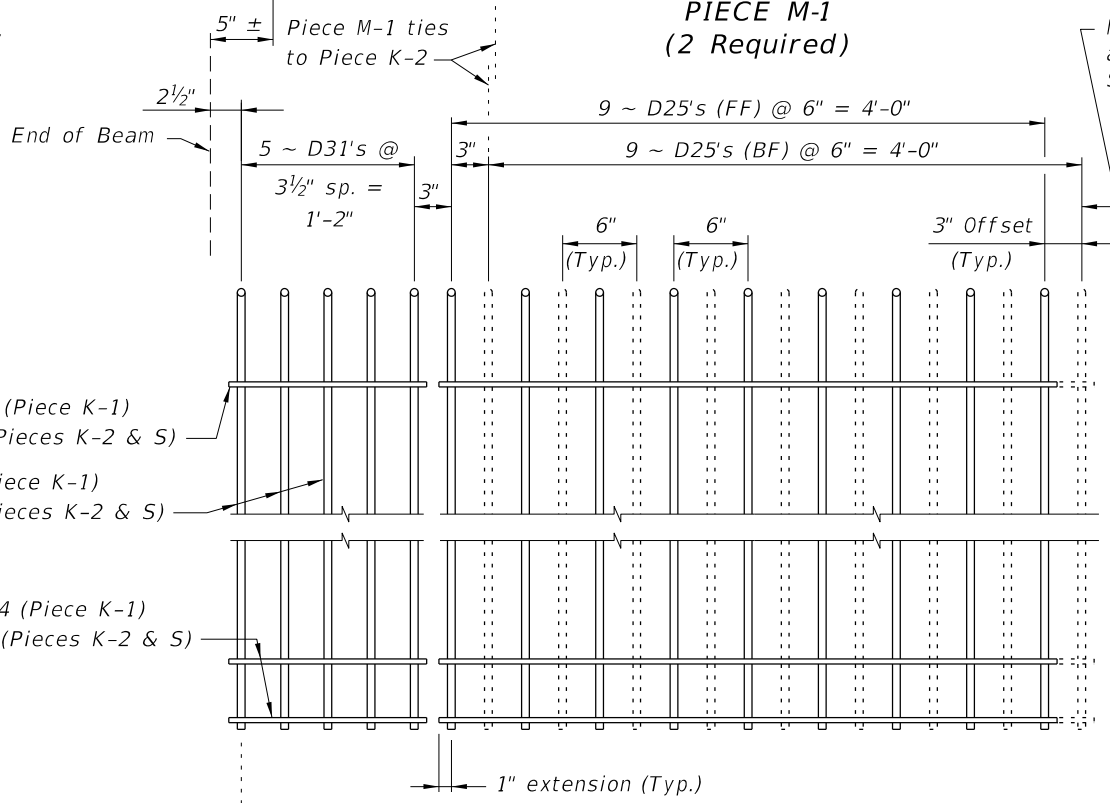
PARTIAL BEAM END VIEW  
(Conventional Reinforcing Bars A, C, Y and Strands not Shown for Clarity)

PIECES M  
END VIEW

1" extension  
(Typ.)



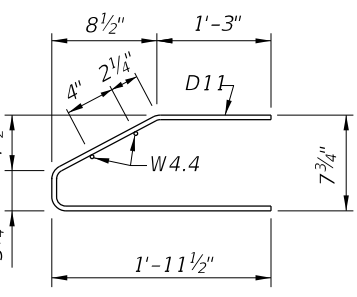
PIECES K & S  
END VIEW



PIECE K-1  
(Aligned EF)  
(4 Required ~ 2 Pairs)

PIECE K-2  
(FF Shown Solid, BF Shown Dashed)  
(4 Required)

PIECE S-1, S-2, S-3 or S-4  
(2 Required Each Piece)

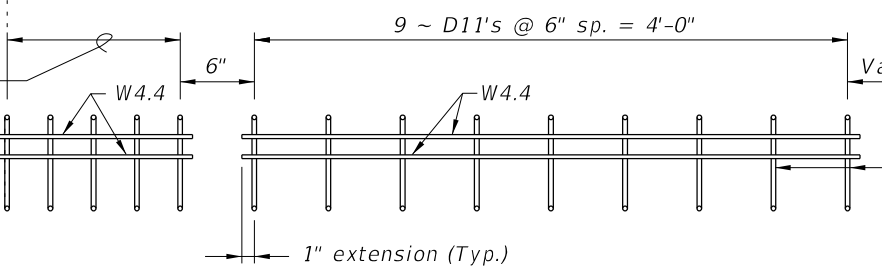


PIECES D  
END VIEW

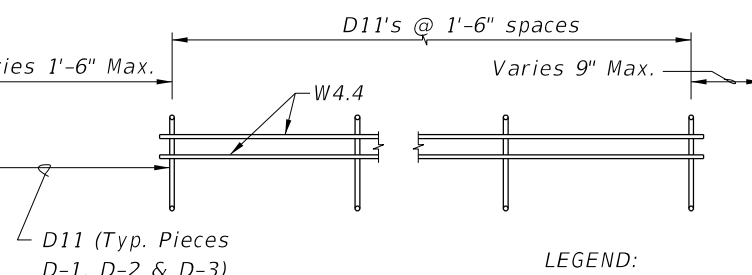
Piece D-1 ties  
to Piece K-1

5 ~ D11's @  
3 1/2" sp. =  
1'-2"

PIECE D-1  
(4 Required ~ 2 Pairs)



PIECE D-2  
(4 Required ~ 2 Pairs)



PIECE D-3  
(4 Required ~ 2 Pairs)

LEGEND:  
EF = Each Face  
FF = Front Face  
BF = Back Face

NOTES:

- See Sheet 1 for placement details & Table of Beam Variables in Structures Plans for variables S1, S2, S3, S4 & V1.
- Place Conventional Reinforcement Bars 5A & 3C as shown on Sheet 1. Place additional Bars 5Y as shown in Section A-A for WWR. Bars 5Z will not be used with the WWR Option.
- Pieces may be fabricated in multiple length sections.
- For beams with skewed end conditions, Pieces D-1, D-2 & M-1 shall not be used; Conventional Reinforcement Bars D1, D2, C1, C2, M1 & M2 shall be used. See Index 450-010 Skewed Beam End Details and Note 9 for placement details. Shift Pieces K & Bars 5Y to accommodate skewed end conditions and align with Bars C and D.

10/15/2023 11:27:17 AM