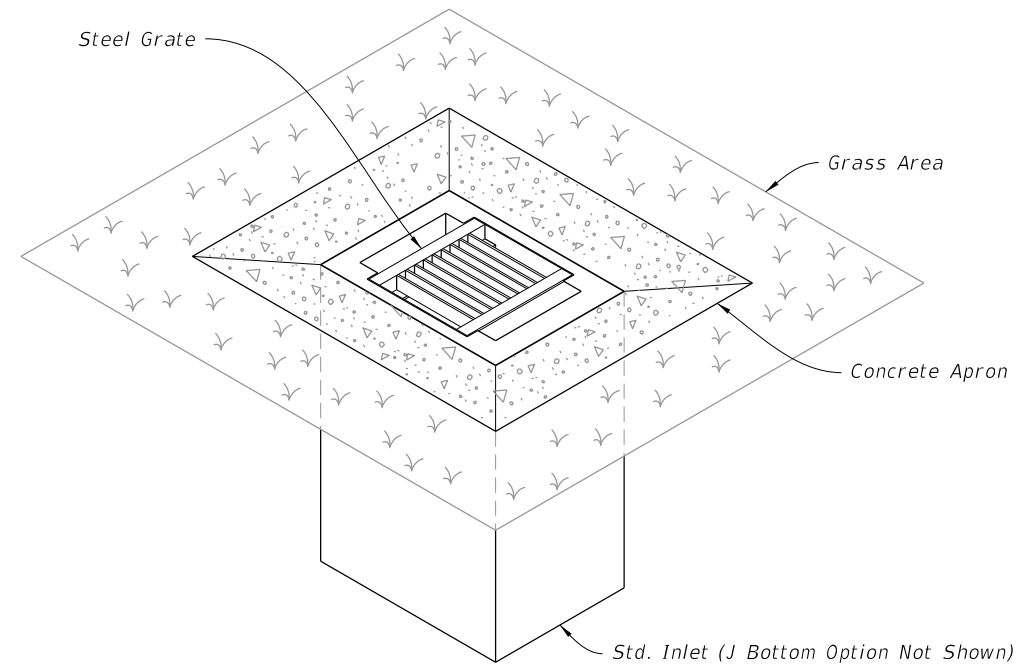


**GENERAL NOTES:**

1. Work this Index with Index 425-001 and Index 425-010.
2. All reinforcing is Grade 60 bars with 2" minimum cover unless otherwise noted. Cut or bend bars out of way of pipe to clear pipe by 1½". See Index 425-001 for equivalent area of welded wire fabric.
2. Chamfer all exposed edges and corners ¾" or tooled to ¼" radius.
4. All dimensions are for both precast and cast-in-place inlets unless otherwise noted.
5. Quantities are for informational and estimating purposes only.




**TABLE OF CONTENTS:**

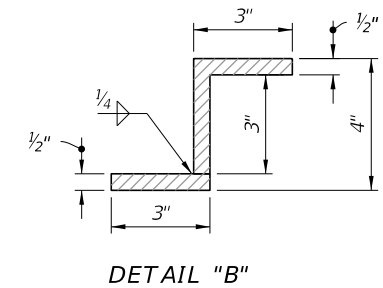
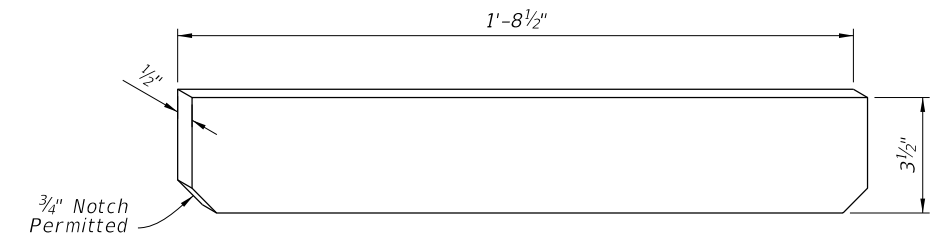
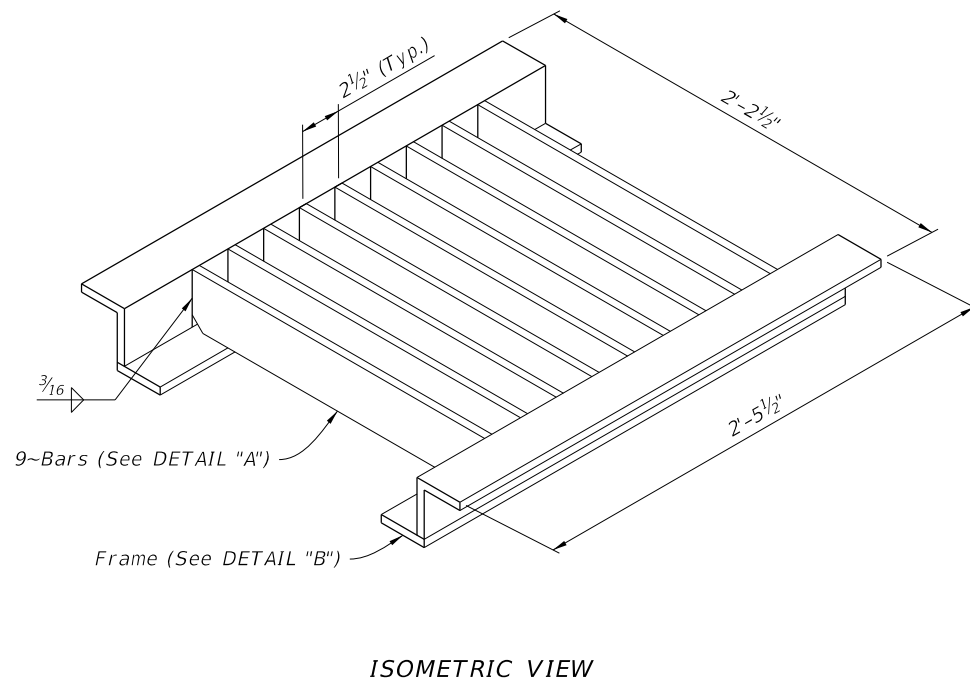
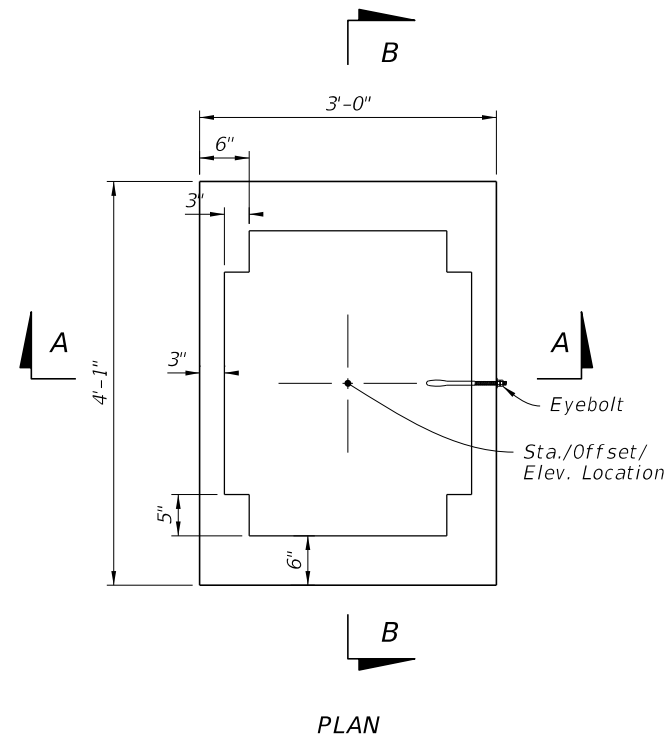
| Sheet | Description                                       |
|-------|---|
| 1     | General Notes and Contents                        |
| 2     | Dimensional, Reinforcing, and Steel Grate Details |
| 3     | Concrete Apron and Sodded Area Details            |
| 4     | Alternate A Structure Bottom - Top Slab Details   |

**DITCH BOTTOM INLET TYPE A**

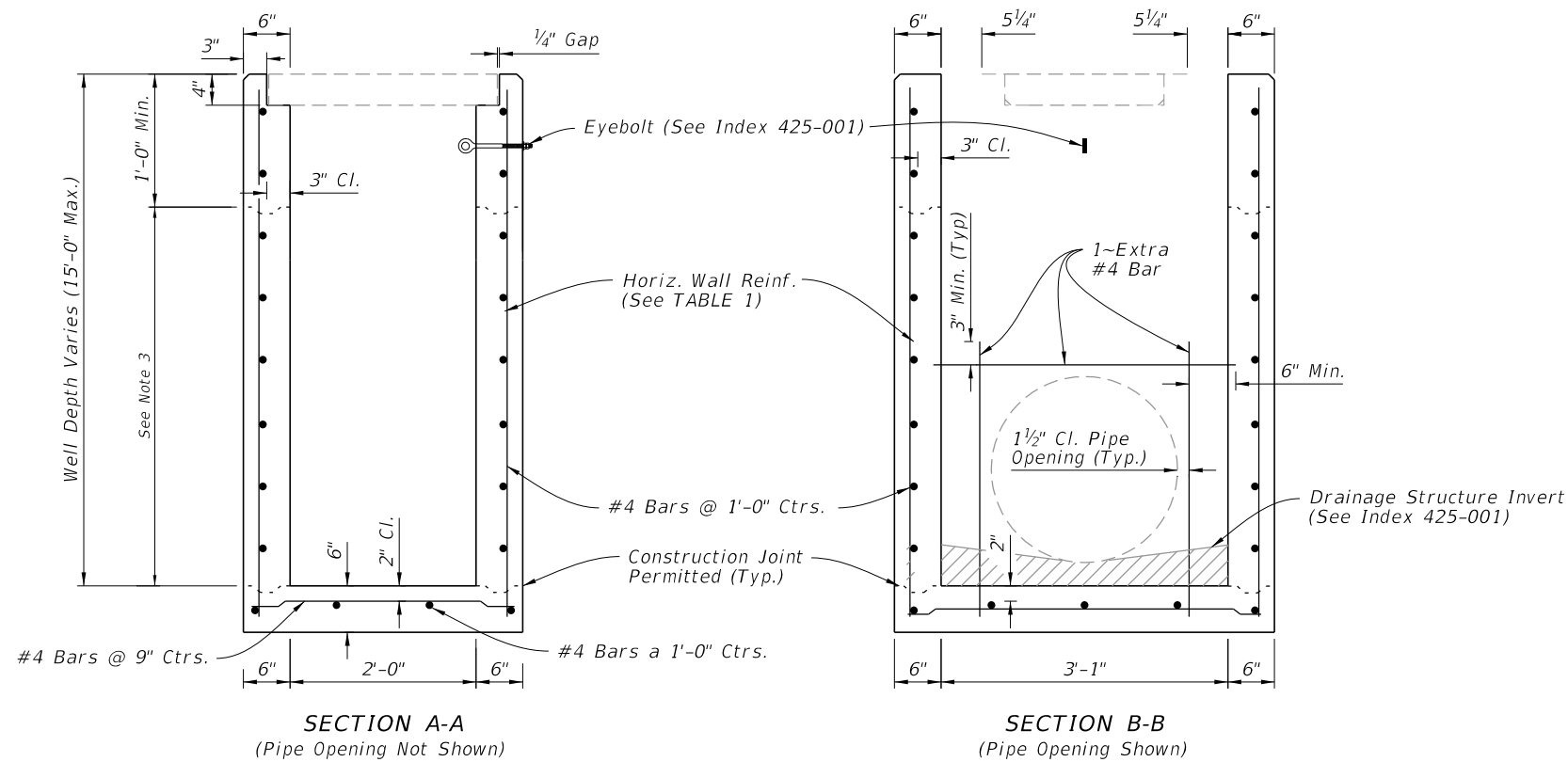
(Pipe Opening Not Shown)

9/28/2023 4:18:03 PM

|                           |          |              |   |                                  |                  |                 |
|---------------------------|----------|--------------|---|----------------------------------|------------------|-----------------|
| LAST REVISION<br>11/01/20 | REVISION | DESCRIPTION: | <br>FY 2024-25<br>STANDARD PLANS | <b>DITCH BOTTOM INLET TYPE A</b> | INDEX<br>425-050 | SHEET<br>1 of 4 |
|---------------------------|----------|--------------|---|----------------------------------|------------------|-----------------|



STEEL GRATE DETAILS



**TABLE 1**  
**HORIZONTAL WALL REINFORCING SCHEDULE**

| WALL DEPTH | SCHEDULE | AREA (in. <sup>2</sup> /ft.) | MAX. SPACING |     |
|------------|----------|------------------------------|--------------|-----|
|            |          |                              | BARS         | WWR |
| 0' - 10'   | A12      | 0.20                         | 12"          | 8"  |
| 10' - 15'  | A6       | 0.20                         | 6"           | 5"  |

**NOTES:**

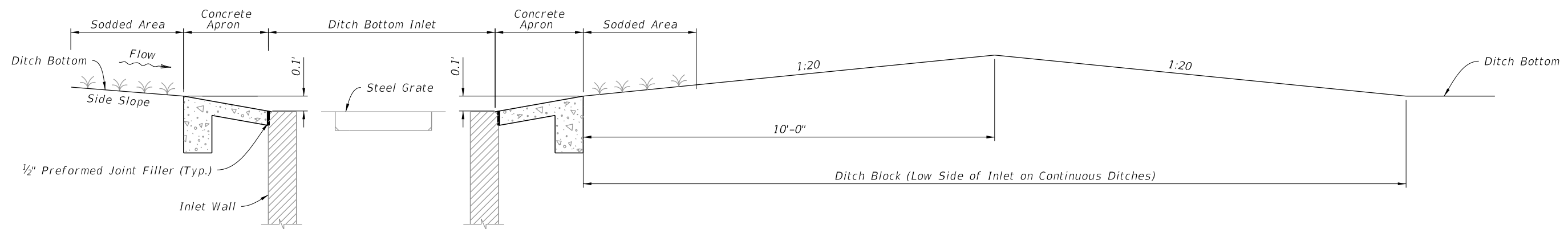
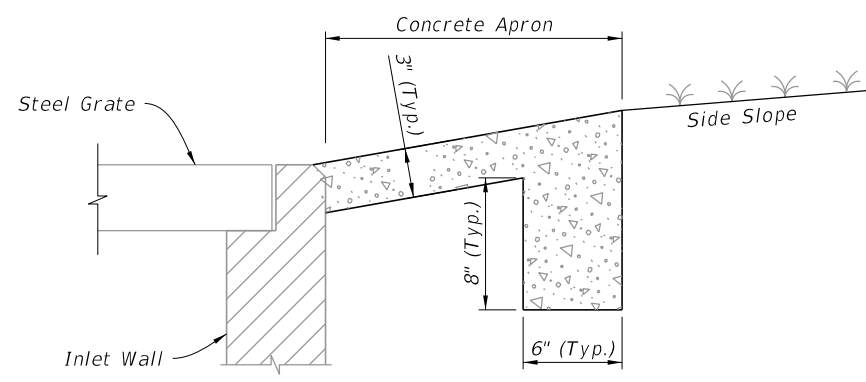
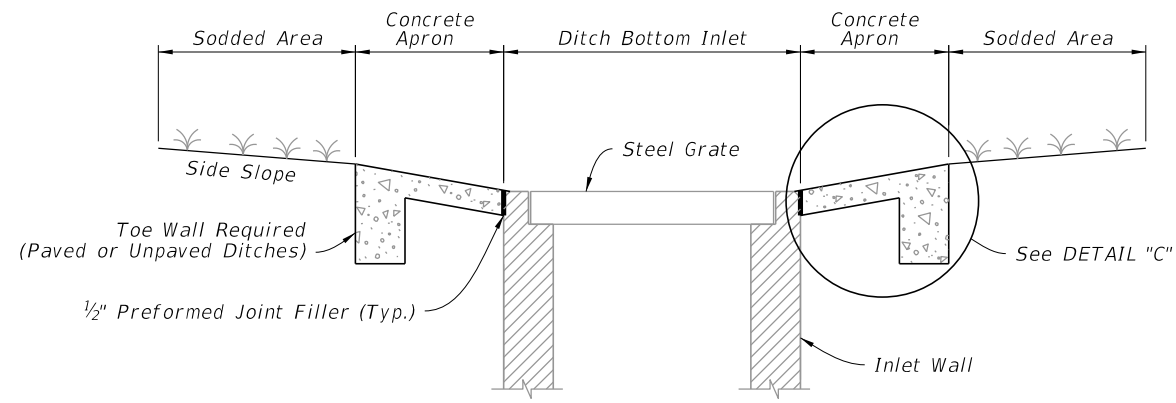
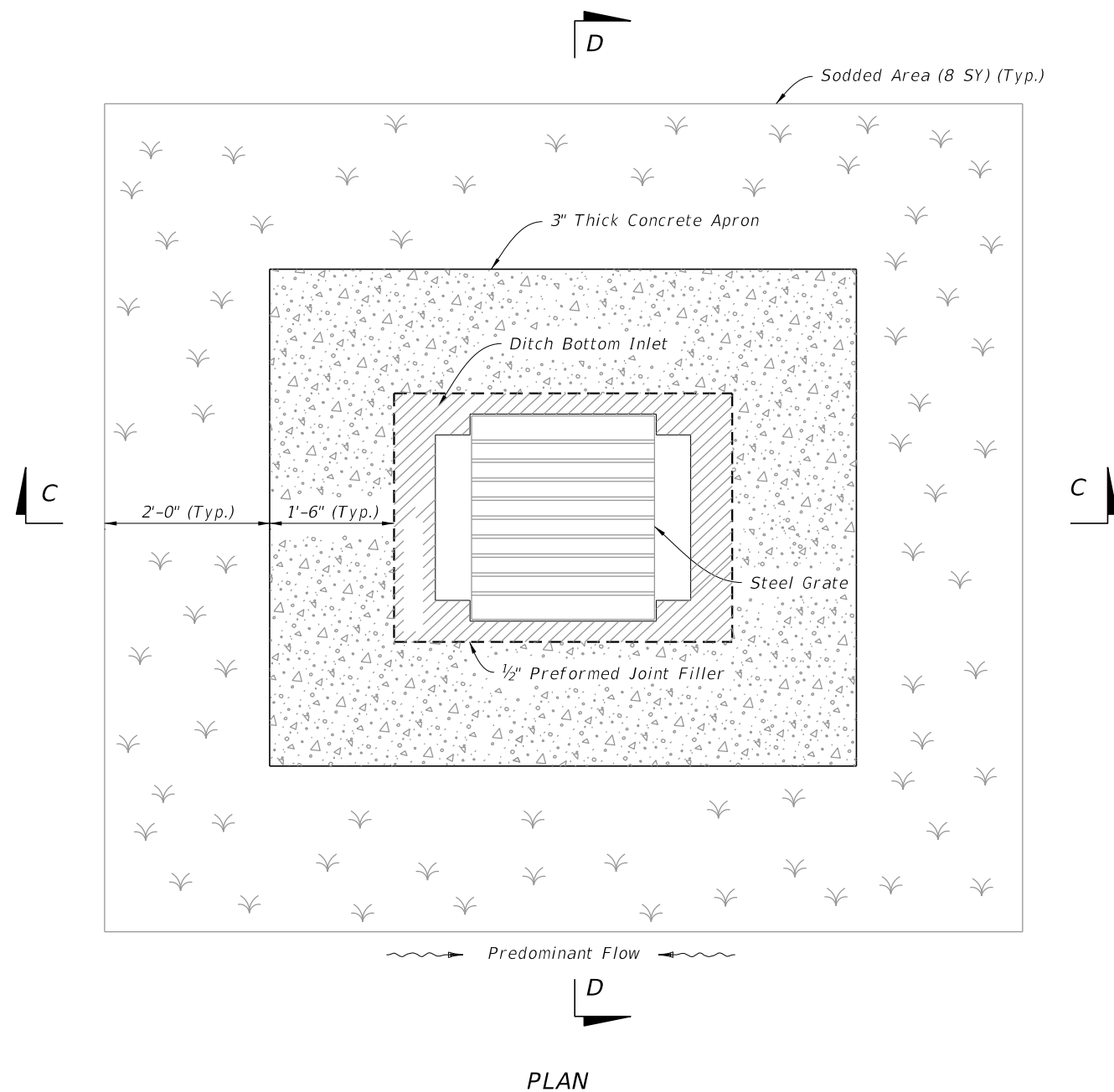
1. Plan View: The Steel Grate, Concrete Apron, and Sod are not shown.
2. See Sheet 3 for Concrete Apron and Sodded Area details.
3. Construction joints permitted between these limits. See Index 425-001 for minimum dimensions.

DIMENSIONAL AND REINFORCING DETAILS

DIMENSIONAL, REINFORCING, AND STEEL GRATE DETAILS


9/28/2023 4:18:07 PM

|                           |              |  |                              |                           |         |        |
|---------------------------|--------------|--|------------------------------|---------------------------|---------|--------|
| LAST REVISION<br>11/01/20 | DESCRIPTION: |  | FY 2024-25<br>STANDARD PLANS | DITCH BOTTOM INLET TYPE A | INDEX   | SHEET  |
|                           |              |  |                              |                           | 425-050 | 2 of 4 |

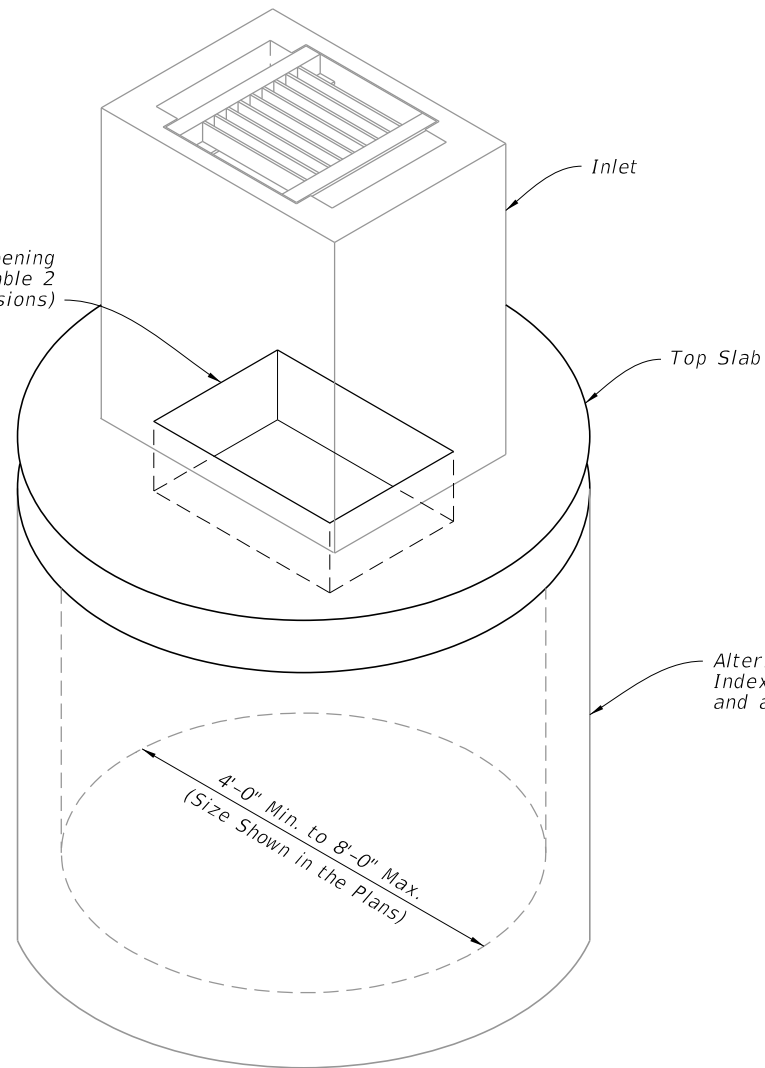


CONCRETE APRON AND SODDED AREA DETAILS

9/28/2023 4:18:12 PM

|                           |          |              |  |                              |                           |                  |                 |
|---------------------------|----------|--------------|--|------------------------------|---------------------------|------------------|-----------------|
| LAST REVISION<br>11/01/20 | REVISION | DESCRIPTION: |  | FY 2024-25<br>STANDARD PLANS | DITCH BOTTOM INLET TYPE A | INDEX<br>425-050 | SHEET<br>3 of 4 |
|---------------------------|----------|--------------|--|------------------------------|---------------------------|------------------|-----------------|

Centered Opening  
(See Table 2  
for Dimensions)

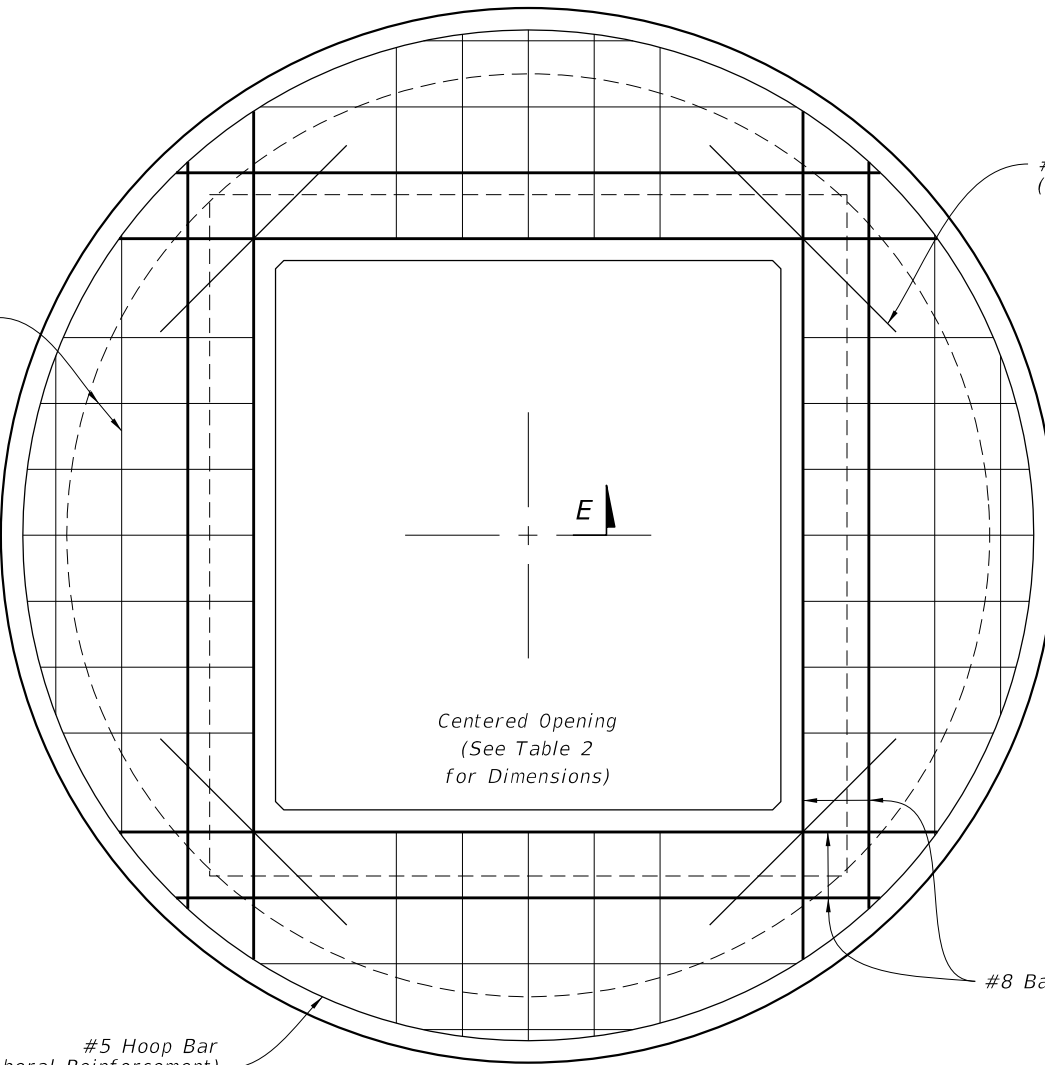


| BOTTOM<br>STRUCTURE<br>DIAMETER | OPENING SIZE  |      |
|---------------------------------|---------------|------|
|                                 | Min.          | Max. |
| 4'-0" to 8'-0"                  | 2'-0" x 3'-1" | --   |

ISOMETRIC VIEW

2 Way Reinforcement  
(See Tables 3 & 4)

E



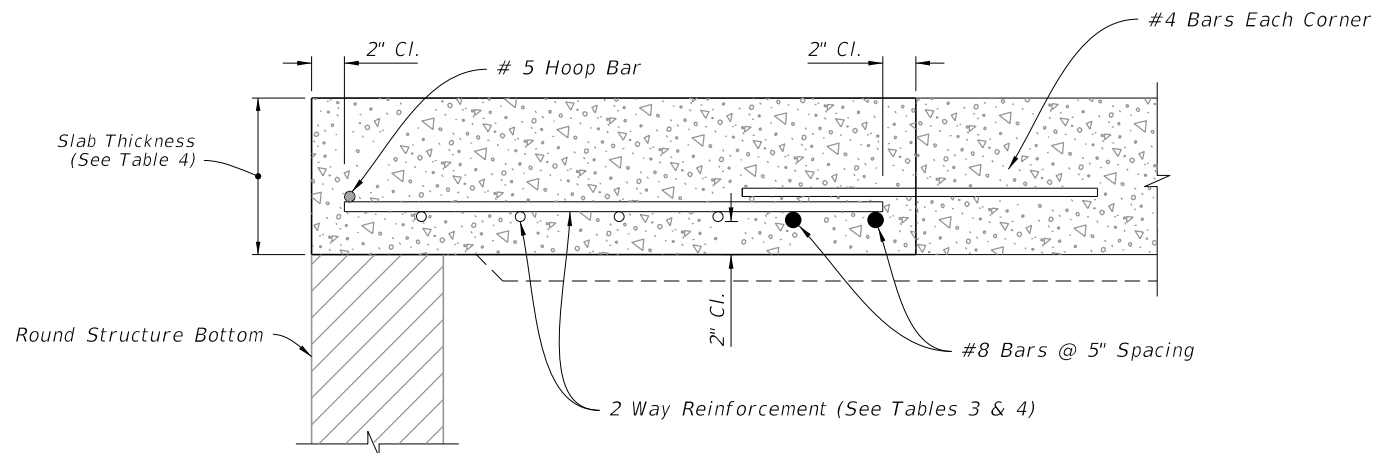
#4 Bar Each Corner  
(2'-0" Min. Length)

Centered Opening  
(See Table 2  
for Dimensions)

#8 Bars

#5 Hoop Bar  
(Peripheral Reinforcement)

PLAN



SECTION E-E

TOP SLAB REINFORCEMENT DETAILS

| SCHEDULE | GRADE 60 (BAR) OR<br>65 KSI & 70 KSI<br>(WIRE FABRIC)<br>In. <sup>2</sup> /ft. |
|----------|--|
| A        | 0.20   |
| B        | 0.24   |
| C        | 0.37   |
| D        | 0.53   |
| E        | 0.73   |
| F        | 1.06   |
| G        | 1.45   |

| STRUCTURE<br>DEPTH | SLAB<br>THICKNESS | REINFORCING<br>(2 WAY)<br>SCHEDULE |
|--------------------|-------------------|------------------------------------|
| SIZE: 4'-0"        |                   |                                    |
| ≥0.5'-40'          | 9½"               | C                                  |
| SIZE: 5'-0"        |                   |                                    |
| ≥0.5'-30'          | 9½"               | C                                  |
| 30'-40'            | 9½"               | D                                  |
| SIZE: 6'-0"        |                   |                                    |
| 0.5'-8'            | 9½"               | B                                  |
| 8'-18'             | 9½"               | C                                  |
| 18'-30'            | 9½"               | D                                  |
| 30'-37'            | 9½"               | E                                  |
| 37'-40'            | 9½"               | G                                  |
| SIZE: 8'-0"        |                   |                                    |
| ≥0.5'-9'           | 11½"              | C                                  |
| 9'-15'             | 11½"              | D                                  |
| 15'-23'            | 11½"              | E                                  |
| 23'-33'            | 11½"              | E                                  |
| 33'-40'            | 11½"              | G                                  |

ALTERNATE A STRUCTURE BOTTOM - TOP SLAB DETAILS

9/28/2023 4:18:45 PM

| LAST REVISION | DESCRIPTION: |
|---------------|--------------|
| 11/01/20      |              |



FY 2024-25  
STANDARD PLANS

DITCH BOTTOM INLET TYPE A

INDEX  
425-050

SHEET  
4 of 4