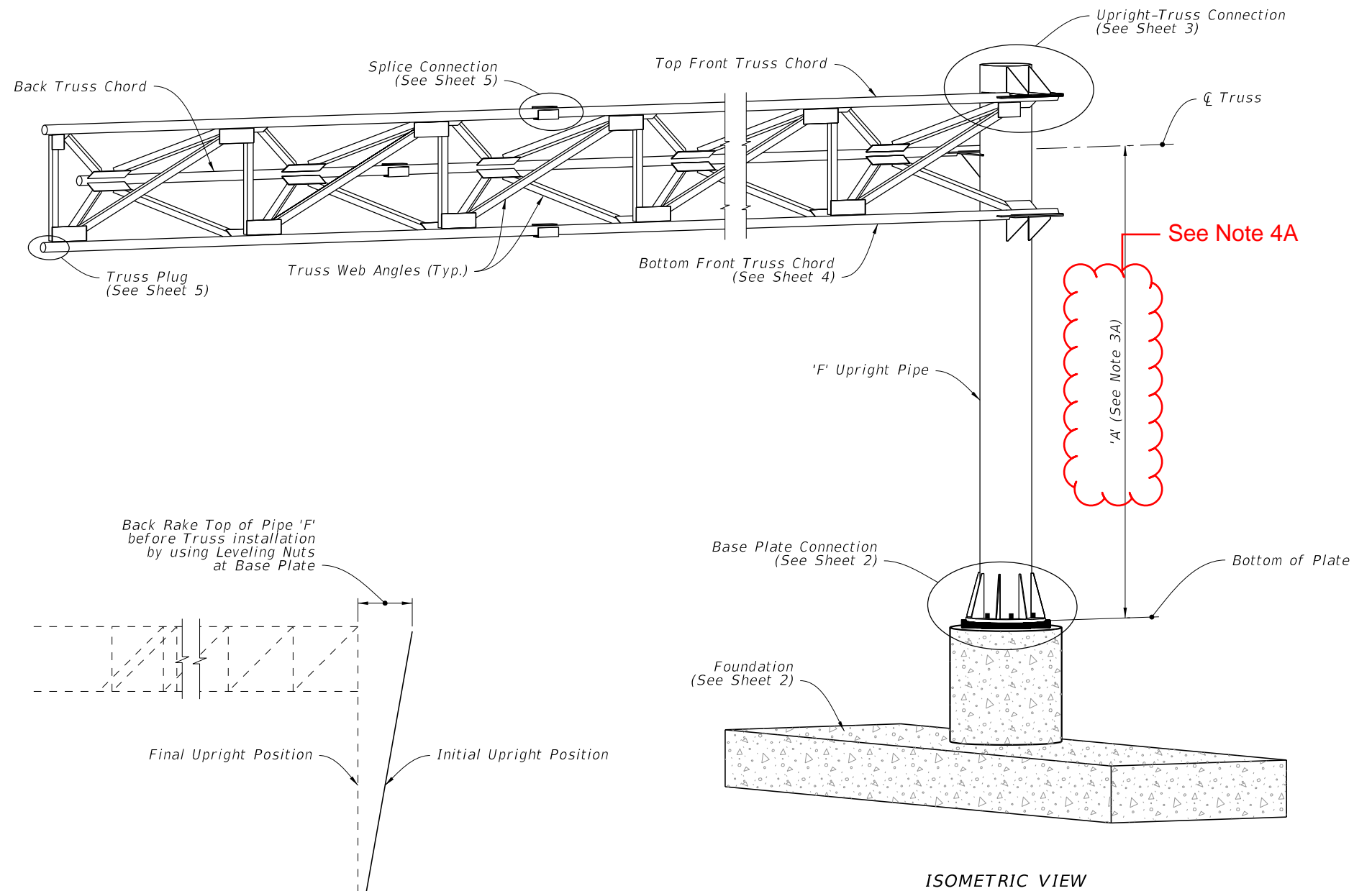


**GENERAL NOTES:**

1. Meet the requirements of Specification 700.
2. Work this Index in conjunction with CANTILEVER SIGN STRUCTURE DATA TABLES in the Plans and Index 700-030.
3. Handholes are required at pole base for DMS Structures. Refer to Index 700-090 for Handhole Details.
4. Shop Drawings are required.

Obtain Shop Drawing approval prior to fabrication. Include the following:

- A. Upright Pipe height ('A') and Foundation elevations: Verify dimension in the field prior to submittal to ensure minimum vertical clearances of the sign panel over the roadway.
- B. Height of the foundation above adjacent ground.
- C. Anchor bolt orientation with respect to centerline of truss and the direction of traffic.
- D. Chord Splices
- E. Handholes at pole base (when required).




**5. Materials:**

- A. Sign Structure:
  - a. Upright and Chords (Steel Pipe): API 5L X42 PSL2, 42 ksi yield or ASTM A500, Grade B (Min.)
  - b. Steel Angles and Structural Plates and Bars: ASTM A709 Grade 36
- B. Bolts, Nuts and Washers:
  - a. High Strength Bolts: ASTM F3125, Grade A325 Type 1
  - b. Nuts: ASTM A563 Grade DH Heavy-Hex
  - c. Washers: ASTM F436 Type 1, one under turned element
- C. Anchor Bolts, Nuts and Washers:
  - a. Anchor Bolts: ASTM F1554 Grade 55
  - b. Nuts: ASTM A563 Grade A Heavy-Hex (5 per bolt)
  - c. Plate Washers: ASTM A36 (2 per bolt)

CLARIFIED NOTES

10/17/2023 7:22:04 AM

LAST REVISION 11/01/22	REVISION	DESCRIPTION:		FY 2024-25 STANDARD PLANS	CANTILEVER SIGN STRUCTURE	INDEX 700-040	SHEET 1 of 5
---------------------------	----------	--------------	---	------------------------------	---------------------------	------------------	-----------------