

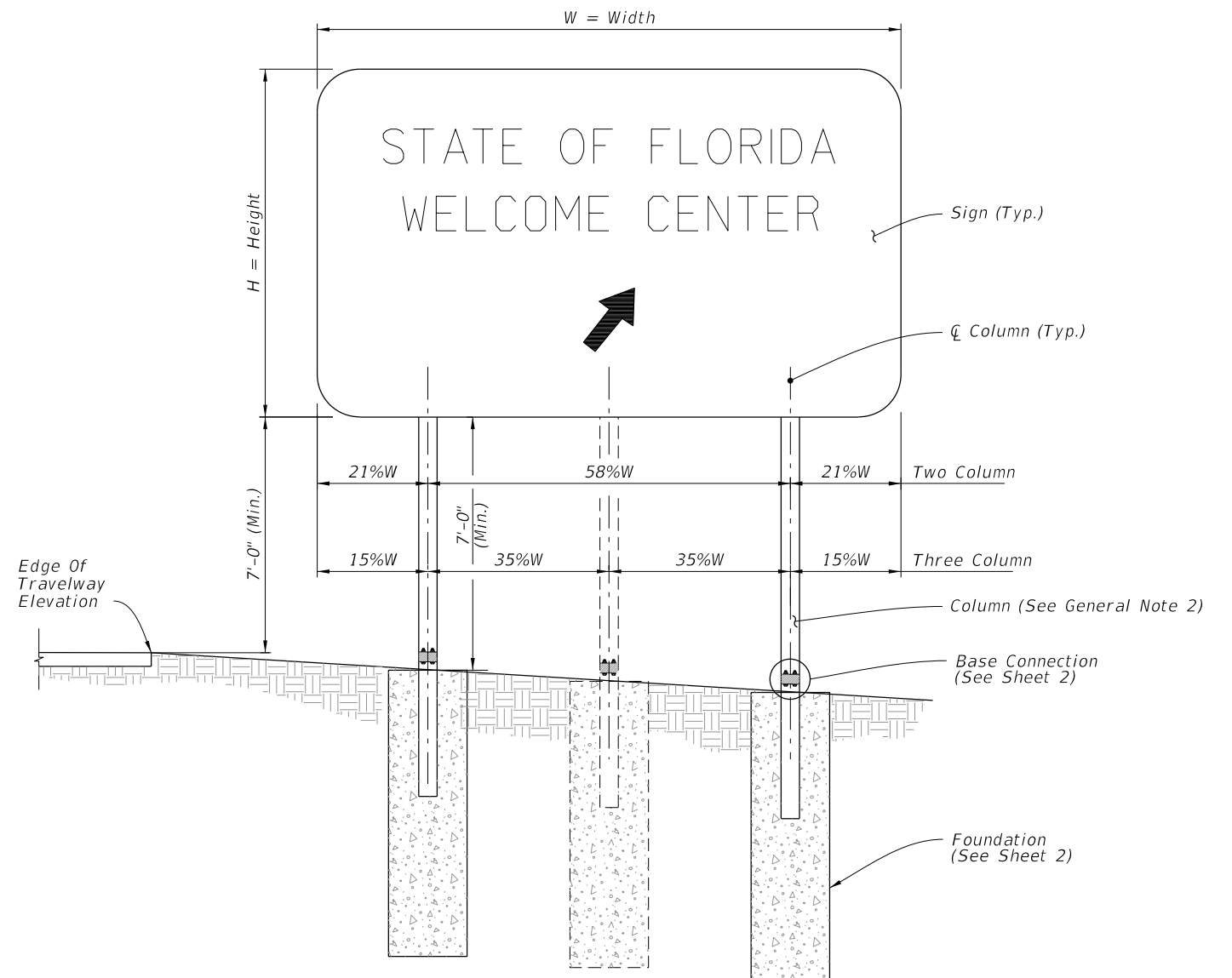
**GENERAL NOTES:**

1. Meet the requirements of Specification 700.
2. Verify Column lengths in the field prior to fabrication.
3. Shop drawings:
  - A. Sign Support Shop drawings are not required when fabricated in accordance with this Index and support columns do not exceed the width ("W") shown in the plans by more than 2'-0".
  - B. Sign Panels: Horizontal panel splices are allowed at interior wind beams for sign panels with a height ("H") greater than 10 feet. Shop drawings required for horizontal panel splice details.
  - C. When shop drawings are required, obtain approval prior to fabrication.

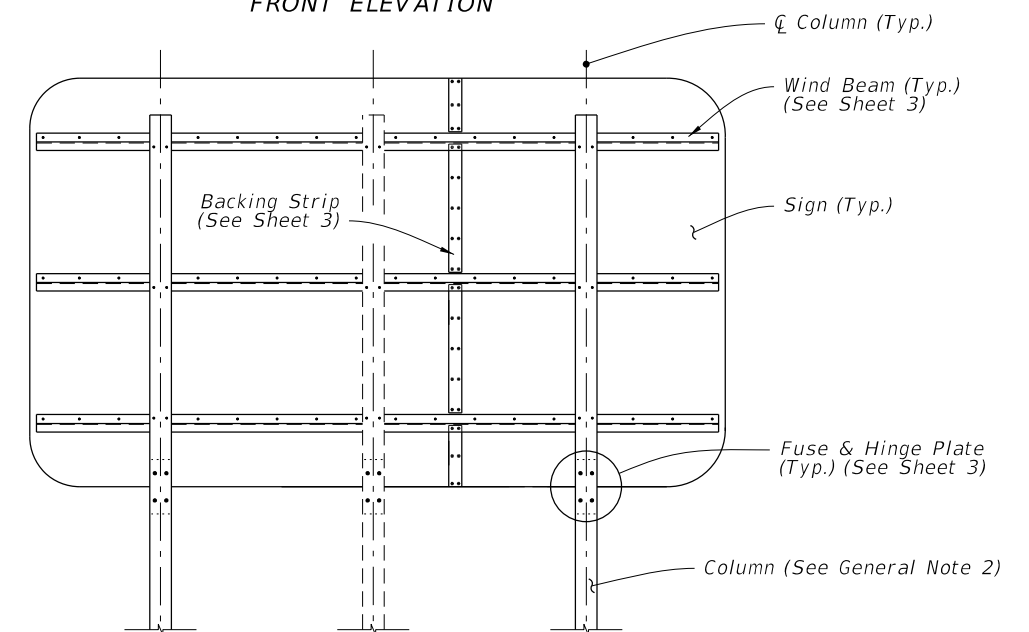
**4. Materials:**

- A. Sign Panel Mounting Materials:
  - a. Aluminum Bars, and Extruded Shapes: ASTM B221, Alloy 6061-T6 or Alloy 6351-T5
  - b. Aluminum Structural Shapes: ASTM B221, Alloy 6061-T6
- B. Sign Support Structure Materials:
  - a. Steel Plates and Structural Shapes: ASTM A36 or ASTM A709, Grade 36
  - b. Steel Weld Metal: E70XX
  - c. Shims: Brass ASTM B36 or Galvanized Steel
- C. Aluminum Bolts, Nuts and Washers:
  - a. Flat Head and Button Head Bolts: ASTM F 468, Alloy 2024-T4
  - b. Hex Nuts: ASTM F467, 2024-T4
  - c. Washers: ASTM B221, Alloy 2024-T4
- D. Stainless Steel Bolts, Nuts and Washers Alloy Group 2, Condition A, may be substituted for the Aluminum bolts as follows:
  - a. Bolts: ASTM F593, CW1 or SH1
  - b. Nuts: ASTM F594,
- E. High Strength (H.S.) Steel Bolts, Nuts and Washers:
  - a. Galvanized Hex Head Bolts: ASTM F3125, Grade A325, Type 1
  - b. Galvanized Nuts: ASTM A563 Hex, Grade DH
  - c. Galvanized Washers: ASTM F436
- F. Concrete: Class II.

CLARIFIED NOTES



FRONT ELEVATION

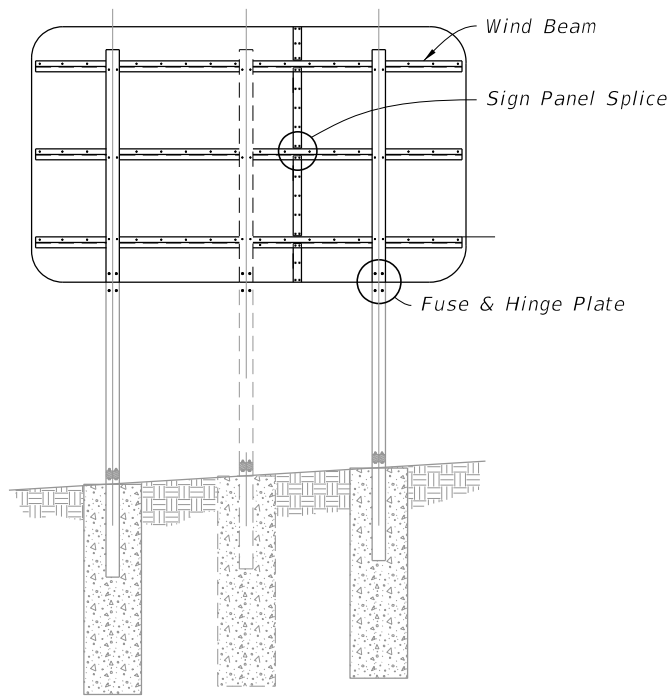


BACK ELEVATION

MULTI-COLUMN SIGN ASSEMBLY

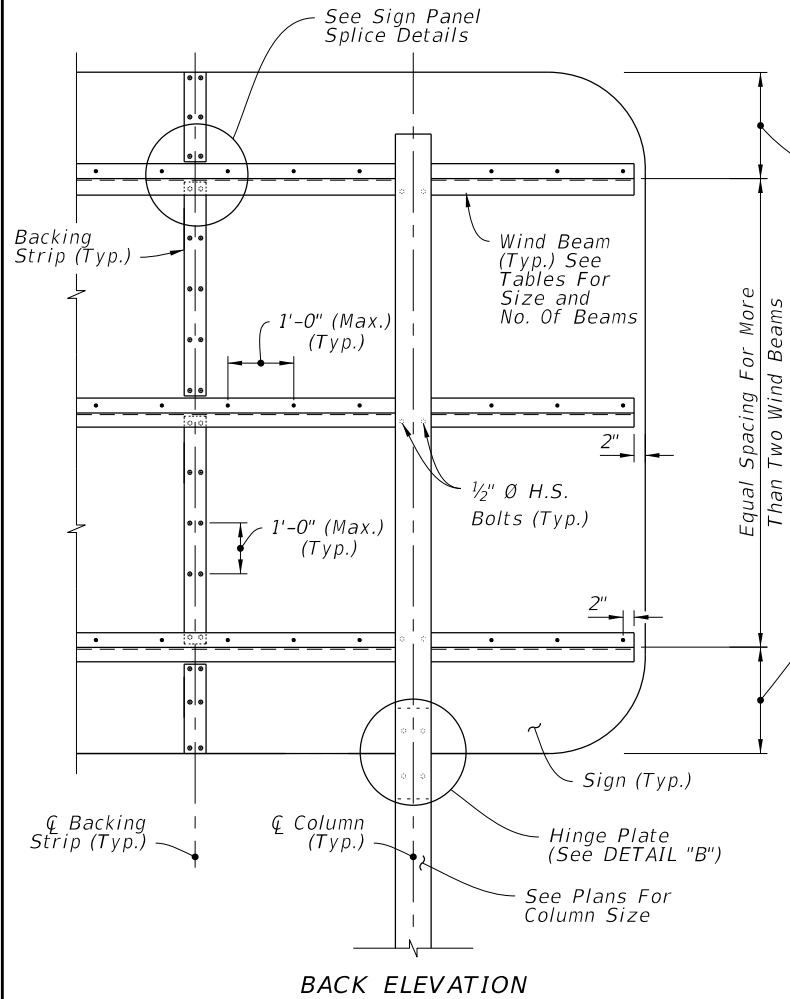
10/3/2023 3:01:48 PM

LAST REVISION 11/01/23	REVISION	DESCRIPTION:		FY 2024-25 STANDARD PLANS	MULTI-COLUMN GROUND SIGN	INDEX 700-020	SHEET 1 of 3
---------------------------	----------	--------------	--	------------------------------	--------------------------	------------------	-----------------



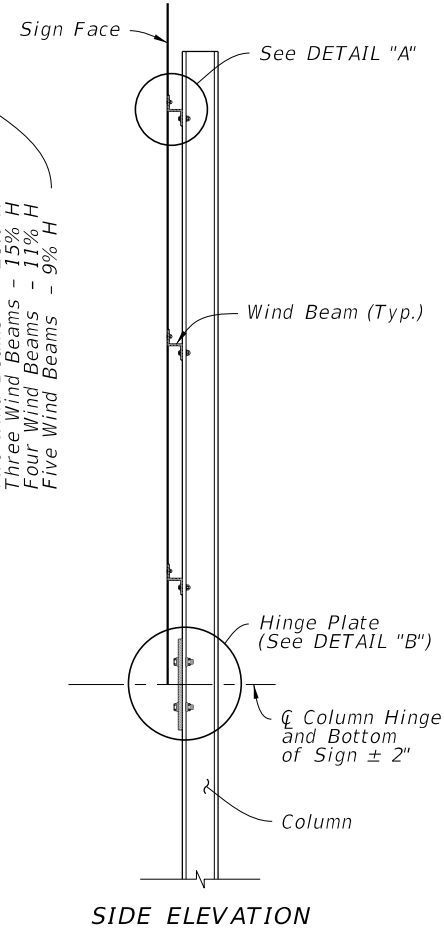
BACK ELEVATION

MULTI-COLUMN SIGN ASSEMBLY

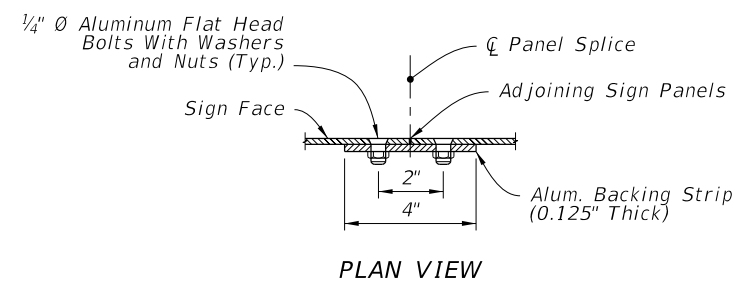


BACK ELEVATION

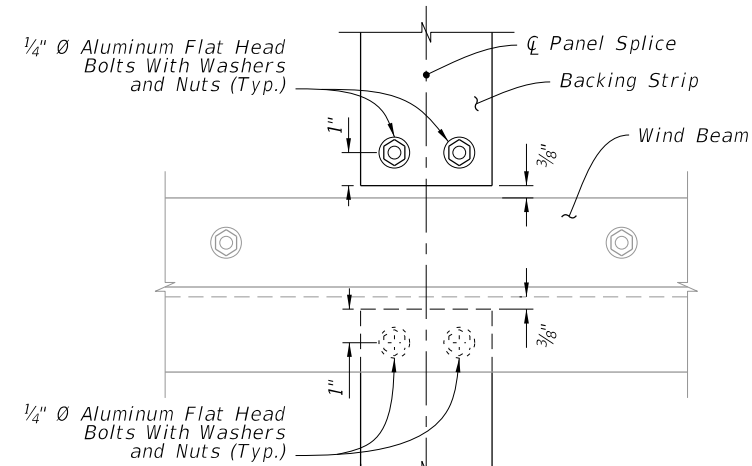
MULTI-COLUMN SIGN BACK PANEL



SIDE ELEVATION



PLAN VIEW



ELEVATION

SIGN PANEL SPLICE

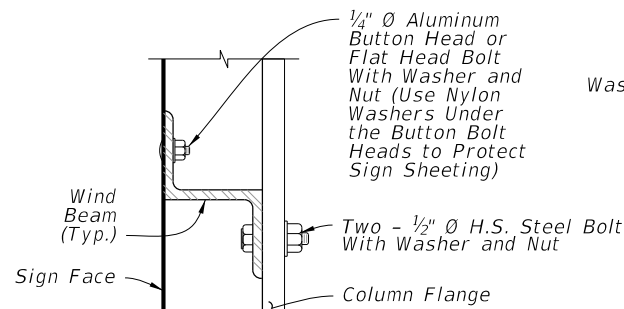
**NUMBER OF WIND BEAMS BASED ON SIGN HEIGHT (H)**

2 Beams	3 Beams	4 Beams	5 Beams
$H \leq 8'$	$8' < H \leq 12'$	$12' < H \leq 16'$	$16' < H \leq 20'$

**WIND BEAM SIZE BASED ON SIGN WIDTH (W)**

2 Columns	3 Columns	Aluminum Beam Size **
$W \leq 12'$	$W \leq 18'$	Z 1-3/4 x 1-3/4 x 1.09
$12' < W \leq 20'$	$18' < W \leq 30'$	Z 3 x 2-1/16 x 2.33
$20' < W \leq 25'$	$30' < W \leq 39'$	Z 4-1/16 x 3-1/8 x 3.57

\*\*Designation gives (Member Depth in inches) x (Flange Width in inches) x (lb/ft)

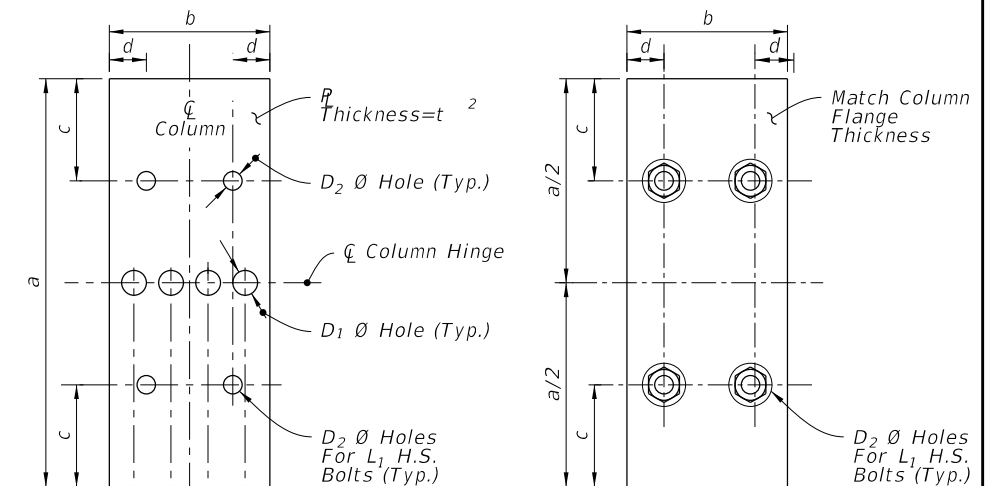


DETAIL "A"

**FUSE (HINGE) PLATE DATA**

Steel Section*	a	b	c	d	e	t <sub>2</sub>	D <sub>1</sub>	D <sub>2</sub>	L <sub>1</sub>
S 3x5.7	7-1/4"	2-3/8"	1-1/4"	1/2"	9/16"	3/8"	7/16"	9/16"	1/2"
W 6x12	7-1/4"	4"	1-1/4"	7/8"	15/16"	3/8"	13/16"	11/16"	5/8"
W 8x18	8-1/4"	5-1/4"	1-3/8"	1-1/8"	1-1/4"	3/8"	1"	13/16"	3/4"
W 8x24	8-1/4"	6-1/2"	1-3/8"	1-1/2"	1-1/2"	1/2"	1"	13/16"	3/4"
W 10x33	9-1/4"	8"	2"	1-3/4"	1-3/4"	5/8"	1-1/8"	1-1/16"	1"
W 12x45	11"	8"	2"	1-3/4"	1-3/4"	3/4"	1-5/16"	1-1/16"	1"

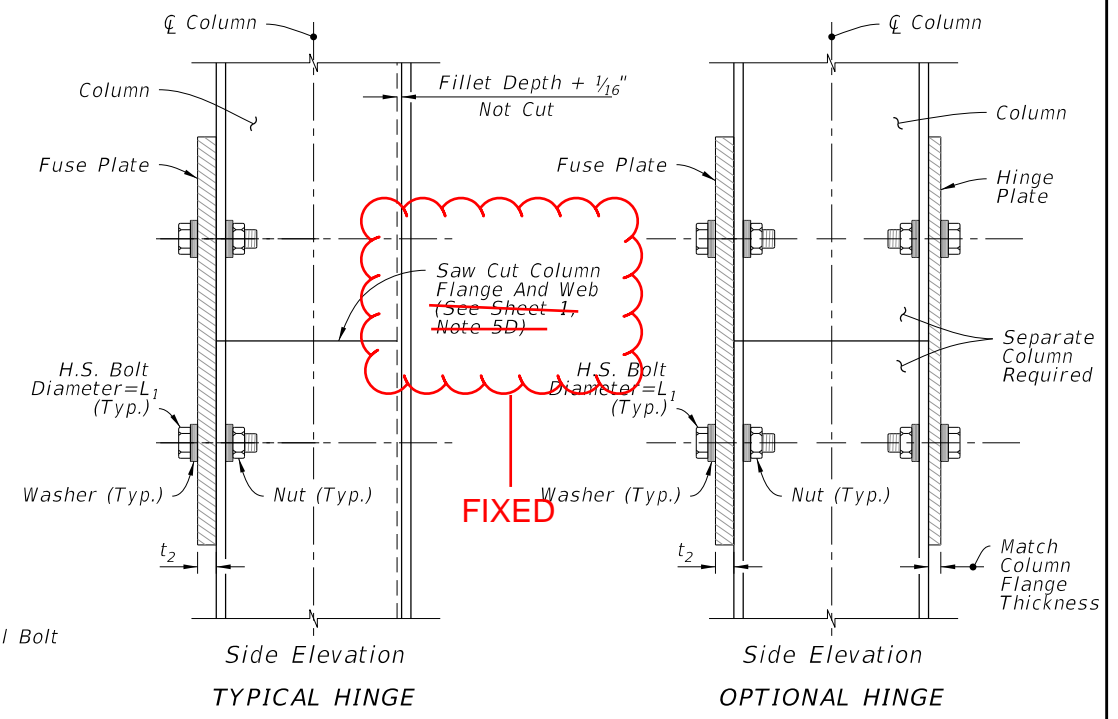
\* Designations: (Nominal Depth in inches) x (Weight in Pounds Per Linear Foot)



FUSE PLATE

HINGE PLATE

FUSE & HINGE PLATE



Side Elevation  
TYPICAL HINGE

Side Elevation  
OPTIONAL HINGE

DETAIL "B"

WIND BEAM, BACKING STRIP & FUSE/HINGE PLATE DETAILS

10/3/2023 3:02:03 PM

LAST REVISION	DESCRIPTION:
11/01/23	