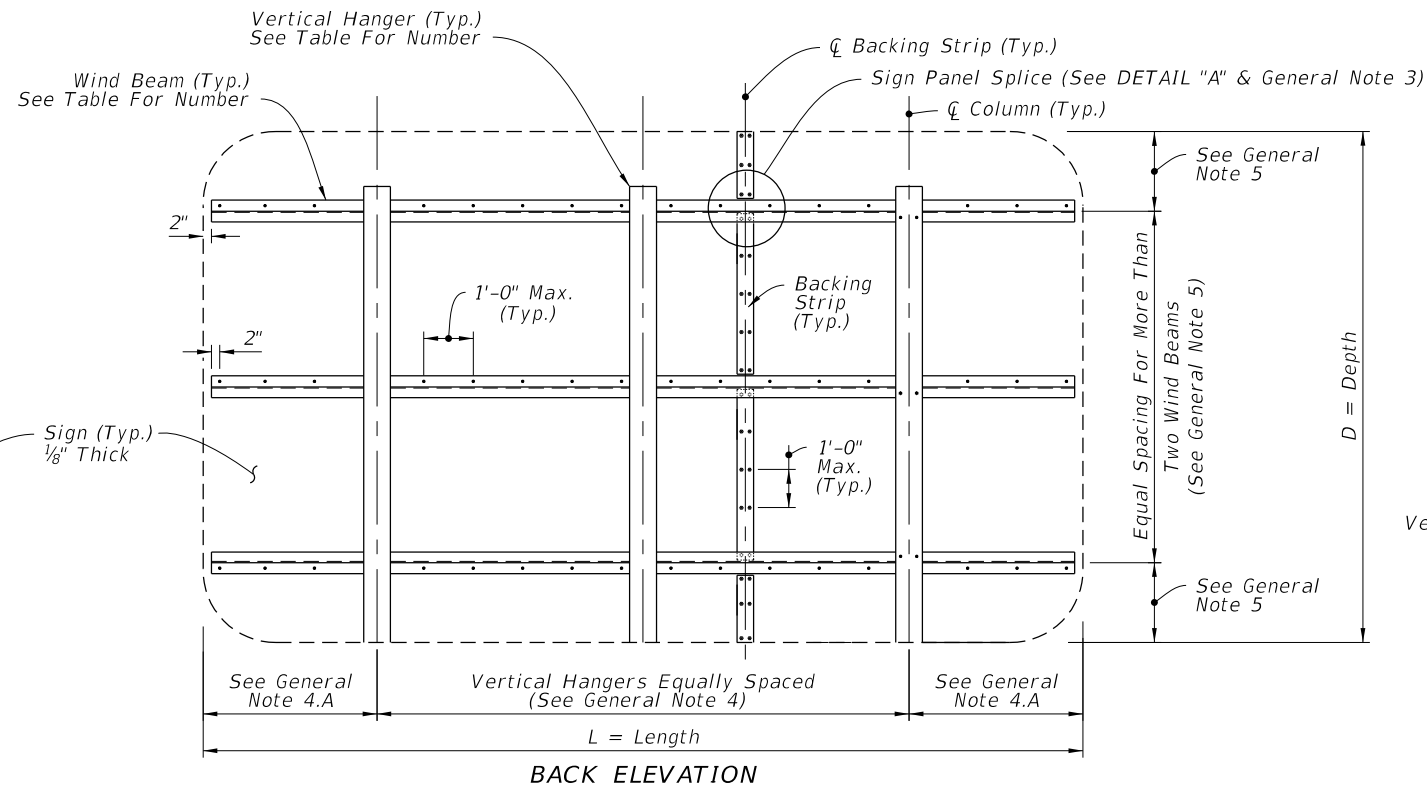
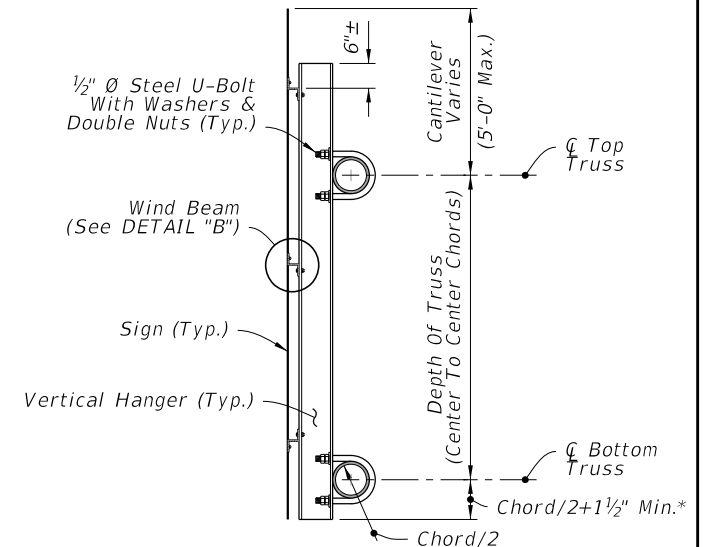


FRONT ELEVATION



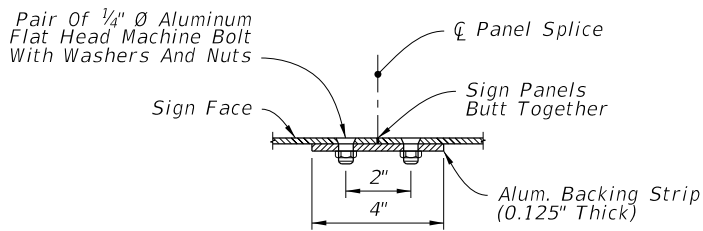
BACK ELEVATION



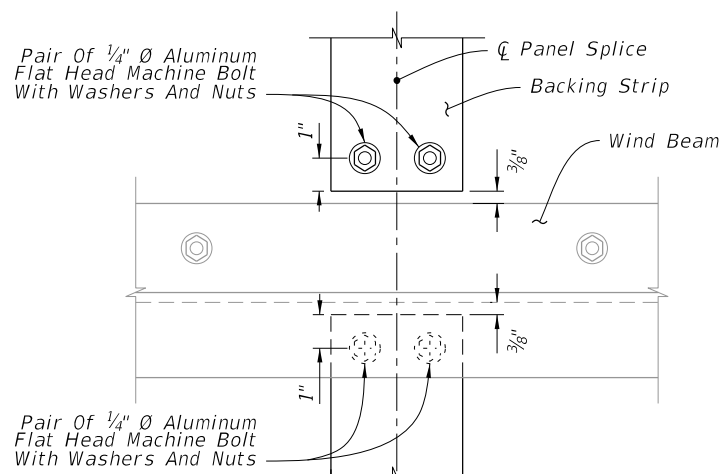
SIDE ELEVATION

*Bottom Justified Shown, Center Justified Similar.

TYPICAL SIGN FOR OVERHEAD TRUSS



PLAN VIEW



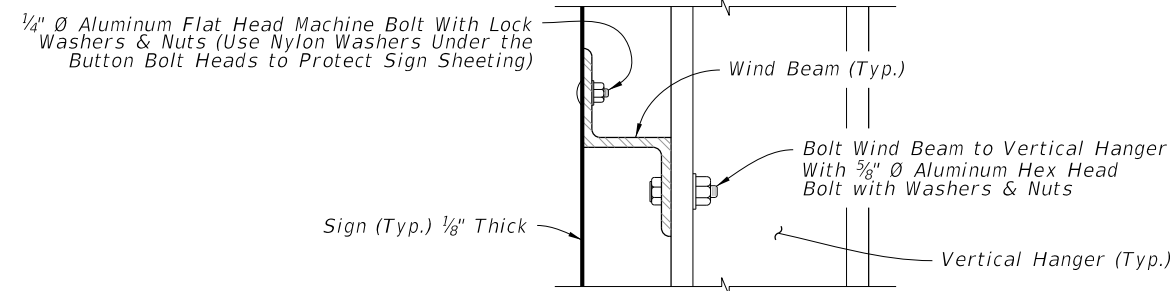
ELEVATION
SIGN PANEL SPLICE

DETAIL "A"

| WIND BEAM TABLE (Z 3 x 2 ¹¹ / ₁₆ x 2.33) | | | | | |
|--|-------------|--------------|---------------|---------------|--|
| Number of Horizontal Wind Beams Based on Sign Depth (D) | | | | | |
| 2 Beams | 3 Beams | 4 Beams | 5 Beams | 6 Beams | |
| D ≤ 5' | 5' < D ≤ 9' | 9' < D ≤ 12' | 12' < D ≤ 15' | 15' < D ≤ 18' | |

| HANGER TABLE (I 6 X 4 x 4.69 or Z 5 x 3 ¹ / ₄ x 4.01) | | | | | |
|---|-----------|---------------|---------------|---------------|---------------|
| Number of Vertical Hanger Beams Based on Wind Speed and Sign Length (L) | | | | | |
| | 2 Hangers | 3 Hangers | 4 Hangers | 5 Hangers | 6 Hangers |
| 130 mph | L ≤ 20' | 20' < L ≤ 30' | 30' < L ≤ 40' | 40' < L ≤ 50' | -- |
| 150 mph | L ≤ 18' | 18' < L ≤ 27' | 27' < L ≤ 35' | 35' < L ≤ 45' | 45' < L ≤ 50' |
| 170 mph | L ≤ 15' | 15' < L ≤ 20' | 20' < L ≤ 28' | 28' < L ≤ 35' | 35' < L ≤ 43' |

NOTE: For Monroe County designs, use 170 mph values but with Z 5 x 3-1/4 x 6.19 vertical hanger beams only.



DETAIL "B"

GENERAL NOTES

1. Meet the requirements of Specification 700.
2. Work this Index with Index 700-040 and 700-041.
3. The number and location of the Panel Splices are determined by the Sign Face supplier.
4. Spacing of Vertical Hangers:
 - A. Two Vertical Hanger = 21.0% L
 - Three Vertical Hanger = 15.0% L
 - Four Vertical Hanger = 11.0% L
 - Five Vertical Hanger = 9.0% L
 - Six Vertical Hanger = 7.0% L
5. Spacing of Wind Beams:
 - A. Two Wind Beams = 21.0% D
 - Three Wind Beams = 15.0% D
 - Four Wind Beams = 11.0% D
 - Five Wind Beams = 9.0% D
 - Six Wind Beams = 7.0% D
6. Shop Drawings:
 - A. Required for Sign Panels deeper than 10'-0" with a horizontal panel splice.
 - B. Splice must be located in between interior Zee Supports and only allowed on signs greater than 10'-0".
7. Wind Speed by county: see Index 715-010.

10/6/2022 2:36:47 PM