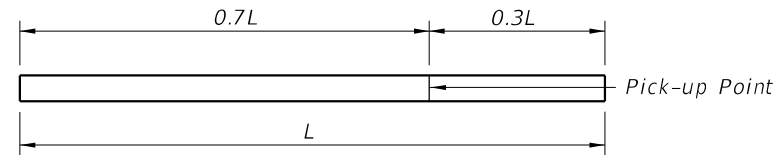
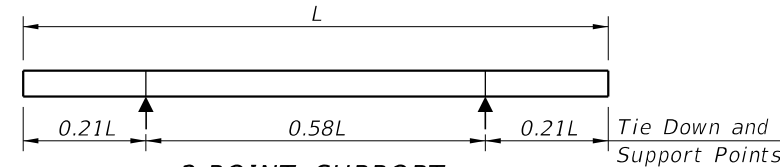


**PRESTRESSED CONCRETE PILE NOTES:**

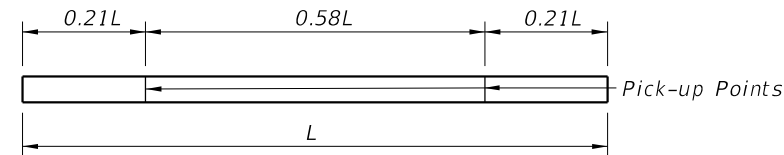
1. Work this Index with the Square Prestressed Concrete Pile Splices (Index 455-002), the Prestressed Concrete Pile Standards (Index 455-012 thru 455-030), the High Moment Capacity Square Prestressed Concrete Pile (Index 455-031) and the Pile Data Table in the Structures Plans.
2. Concrete:
  - A. Piles: Class V, except use Class VI for High Moment Capacity Pile (Index 455-031).
  - B. High Capacity Splice Collar: Class V.
  - C. See "GENERAL NOTES" in the Structures Plans for locations where the use of Highly Reactive Pozzolans is required.
3. Concrete strength at time of prestress transfer:
  - A. Piles: 4,000 psi minimum.
  - B. High Moment Capacity Piles: 6,500 psi minimum.
4. Carbon-Steel Reinforcing:
  - A. Bars: Meet the requirements of Specification Section 415.
  - B. Prestressing Strands: Meet the requirements of Specification Section 933.
  - C. Protect all strands permanently exposed to the environment and not embedded under final conditions in accordance with Specification Section 450.
5. Spiral Ties:
  - A. Tie each wrap of the spiral strand to a minimum of two corner strands.
  - B. One full turn required for spiral splices.
6. Pile Splices: Fill dowel holes and form the joint between pile sections with a Type AB Epoxy Compound in accordance with Specification Section 962. Use an Epoxy Bonding Compound or an Epoxy Mortar as recommended by the Manufacturer.



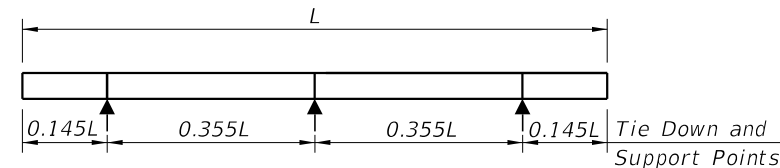
**1-POINT PICK-UP**



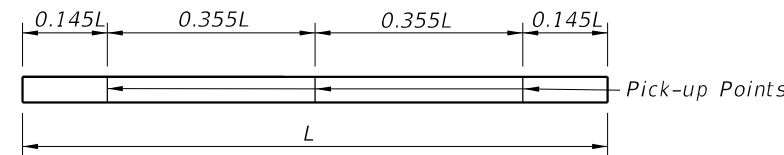
**2-POINT SUPPORT**



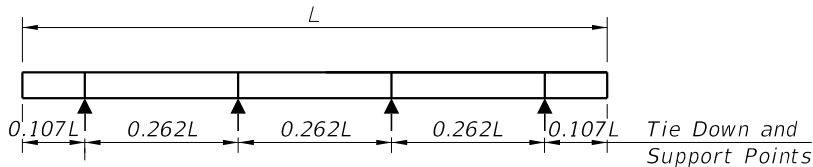
**2-POINT PICK-UP**



**3-POINT SUPPORT**



**3-POINT PICK-UP**

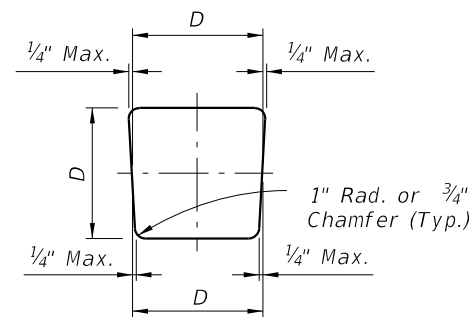


**4-POINT SUPPORT**

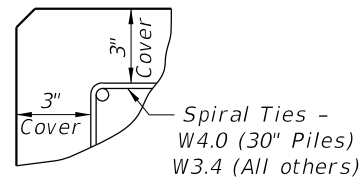
PILE PICK-UP DETAILS

STORAGE AND TRANSPORTATION SUPPORT DETAILS

TABLE OF MAXIMUM PILE PICK-UP AND SUPPORT LENGTHS							
	D = Square Pile Size (inches)					Required Storage and Transportation Detail	Pick-Up Detail
	12	14	18	24	30		
Maximum Pile Length (Feet)	48	52	59	68	87	2, 3, or 4 point	1 Point
	69	75	85	98	124	2, 3, or 4 point	2 Point
	99	107	121	140	178	3 or 4 point	3 Point



**TYPICAL PILE SHAPE FOR MOLD FORMS**



**DETAIL SHOWING TYPICAL COVER**

10/6/2022 11:03:02 AM