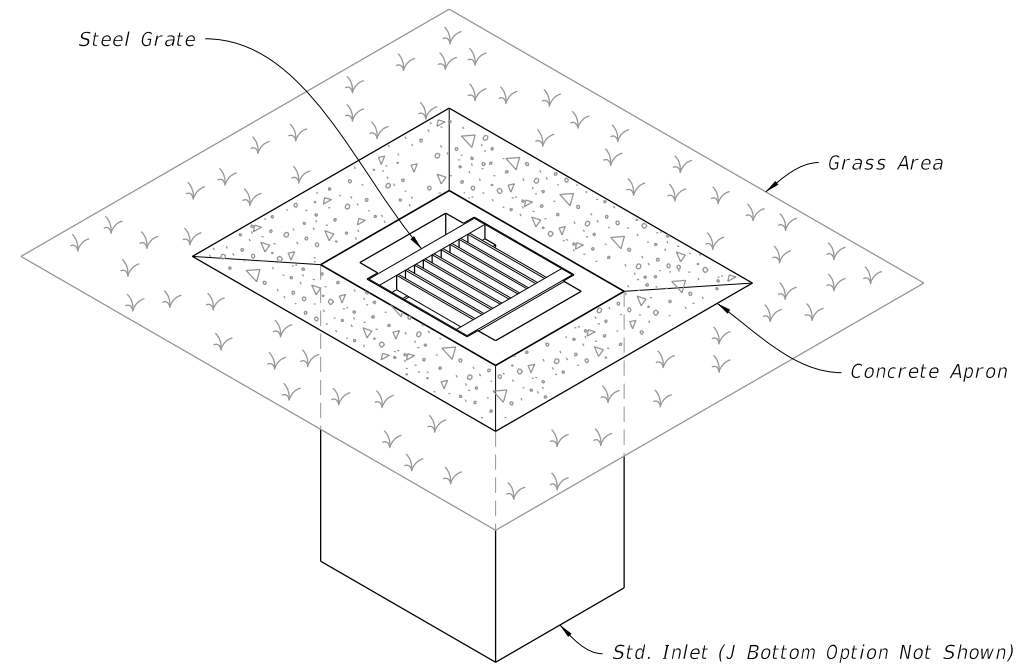


GENERAL NOTES:

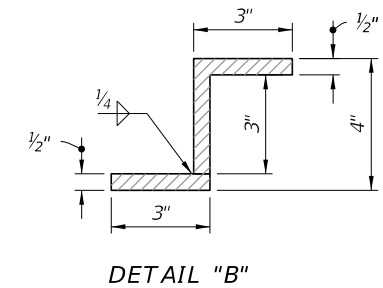
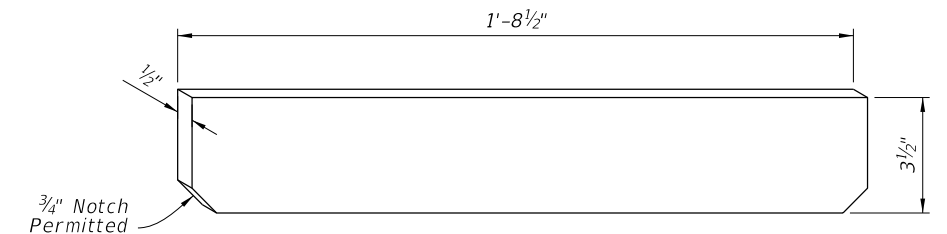
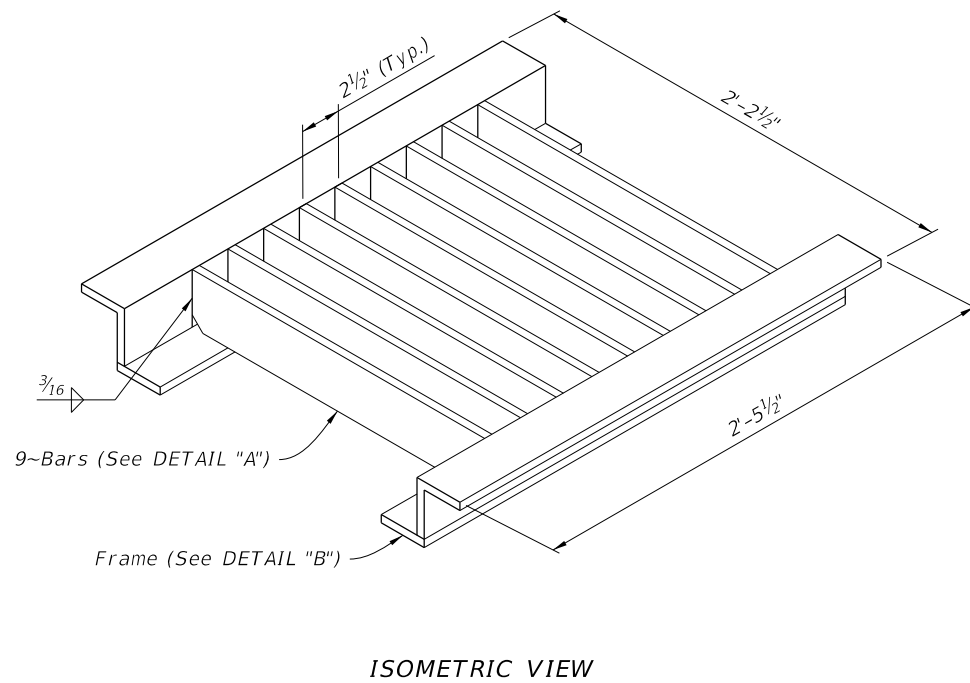
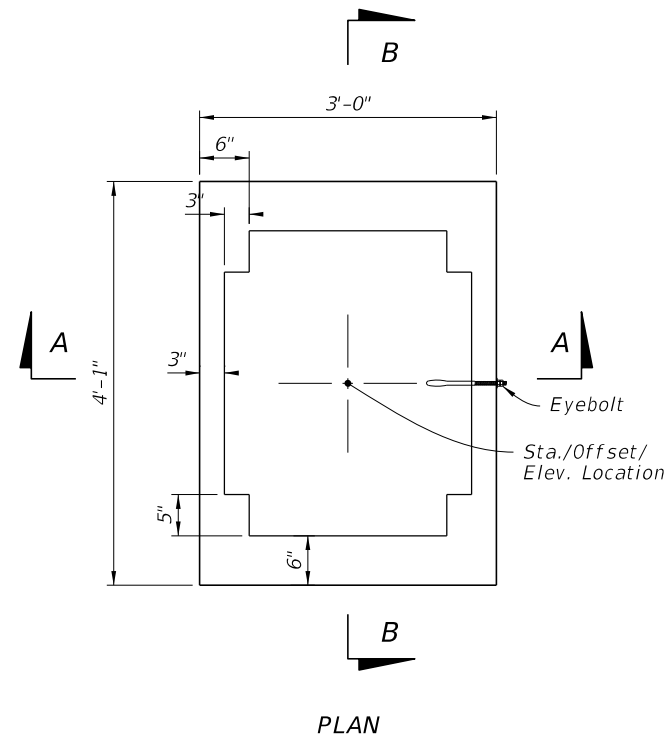
1. Work this Index with Index 425-001 and Index 425-010.
2. All reinforcing is Grade 60 bars with 2" minimum cover unless otherwise noted. Cut or bend bars out of way of pipe to clear pipe by 1½". See Index 425-001 for equivalent area of welded wire fabric.
2. Chamfer all exposed edges and corners ¾" or tooled to ¼" radius.
4. All dimensions are for both precast and cast-in-place inlets unless otherwise noted.
5. Quantities are for informational and estimating purposes only.



| TABLE OF CONTENTS: | |
|--------------------|---|
| Sheet | Description |
| 1 | General Notes and Contents |
| 2 | Dimensional, Reinforcing, and Steel Grate Details |
| 3 | Concrete Apron and Sodded Area Details |
| 4 | Alternate A Structure Bottom - Top Slab Details |

===== DITCH BOTTOM INLET TYPE A =====
(Pipe Opening Not Shown)

10/6/2022 1:47:40 PM



STEEL GRATE DETAILS

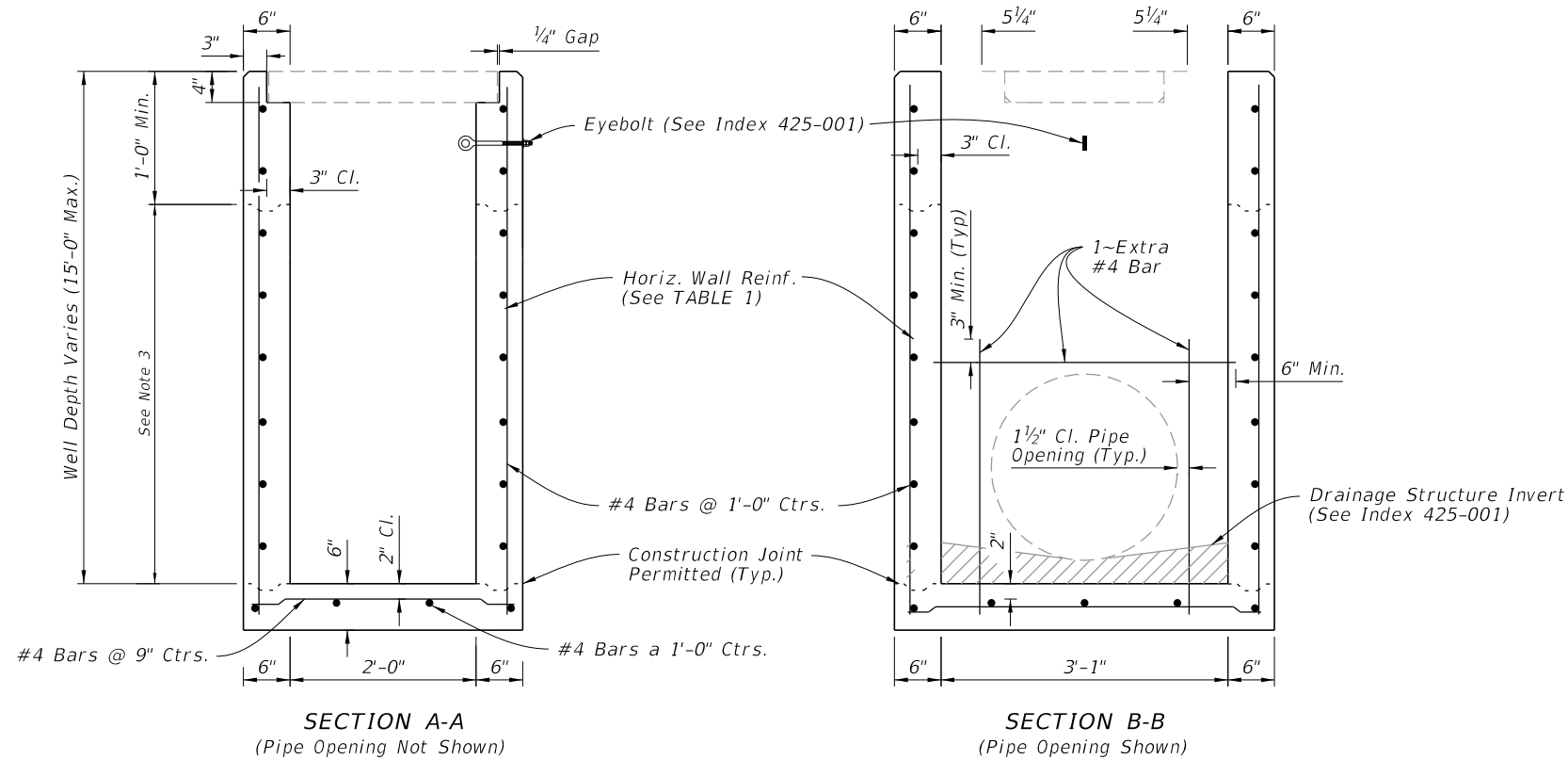


TABLE 1
HORIZONTAL WALL REINFORCING SCHEDULE

| WALL DEPTH | SCHEDULE | AREA (in. ² /ft.) | MAX. SPACING | |
|------------|----------|------------------------------|--------------|-----|
| | | | BARS | WWR |
| 0' - 10' | A12 | 0.20 | 12" | 8" |
| 10' - 15' | A6 | 0.20 | 6" | 5" |

NOTES:

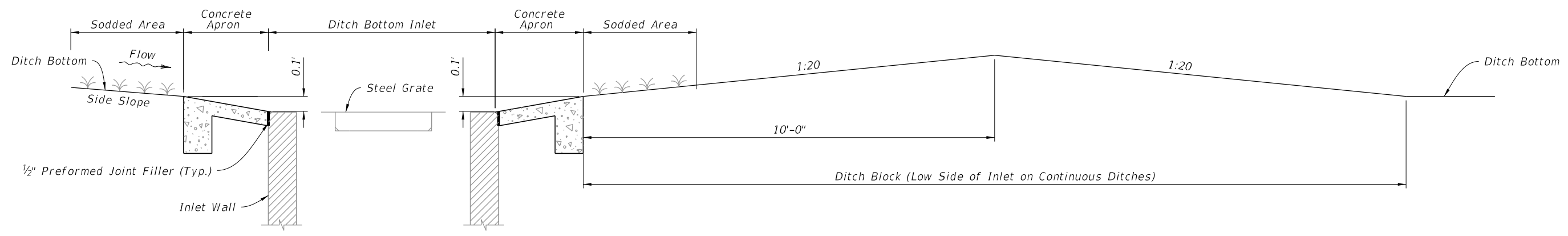
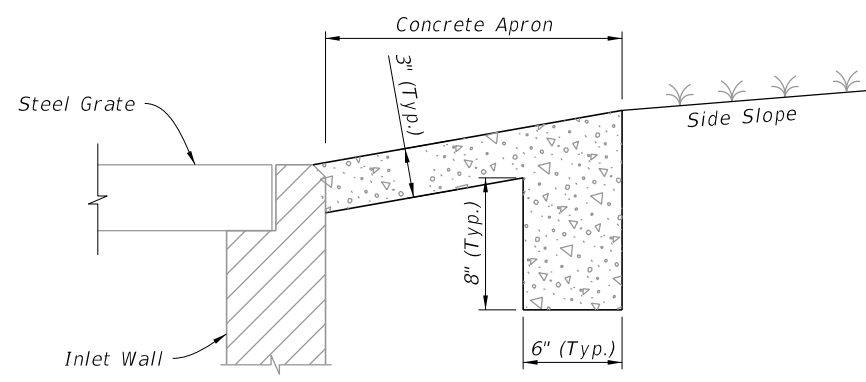
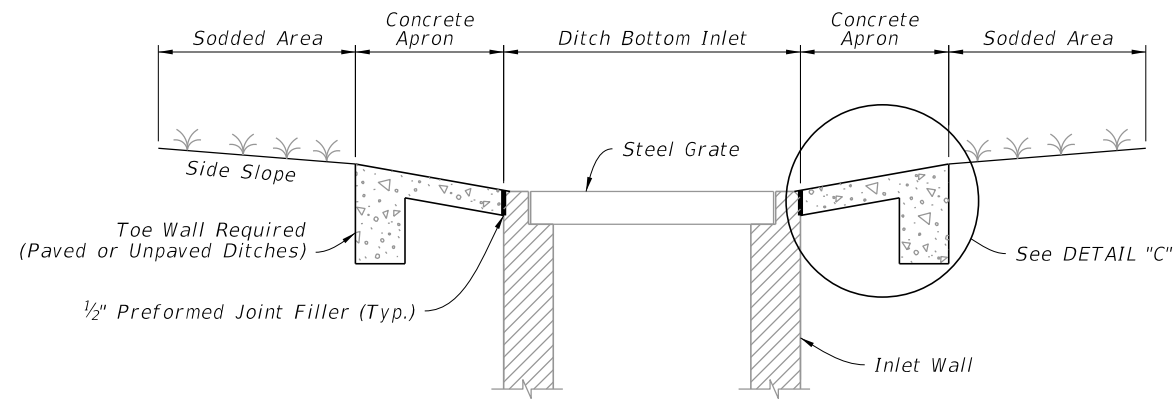
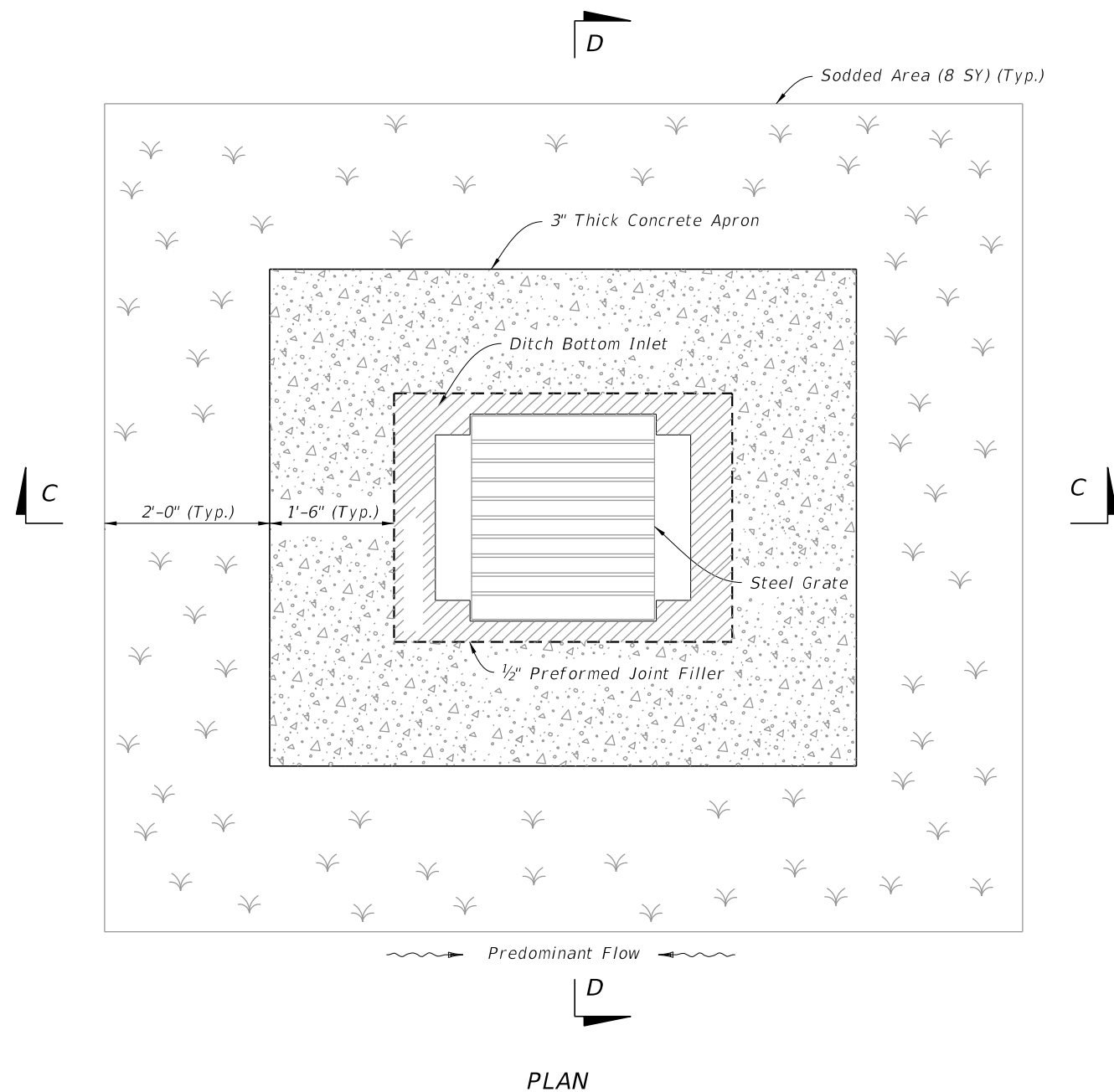
1. Plan View: The Steel Grate, Concrete Apron, and Sod are not shown.
2. See Sheet 3 for Concrete Apron and Sodded Area details.
3. Construction joints permitted between these limits. See Index 425-001 for minimum dimensions.

DIMENSIONAL AND REINFORCING DETAILS

DIMENSIONAL, REINFORCING, AND STEEL GRATE DETAILS


10/19/2022 8:00:09 AM

| | | | | | | |
|---------------------------|--------------|--|------------------------------|---------------------------|---------|--------|
| LAST REVISION 10/01/20 | DESCRIPTION: | | FY 2023-24 STANDARD PLANS | DITCH BOTTOM INLET TYPE A | INDEX | SHEET |
| | | | | | 425-050 | 2 of 4 |

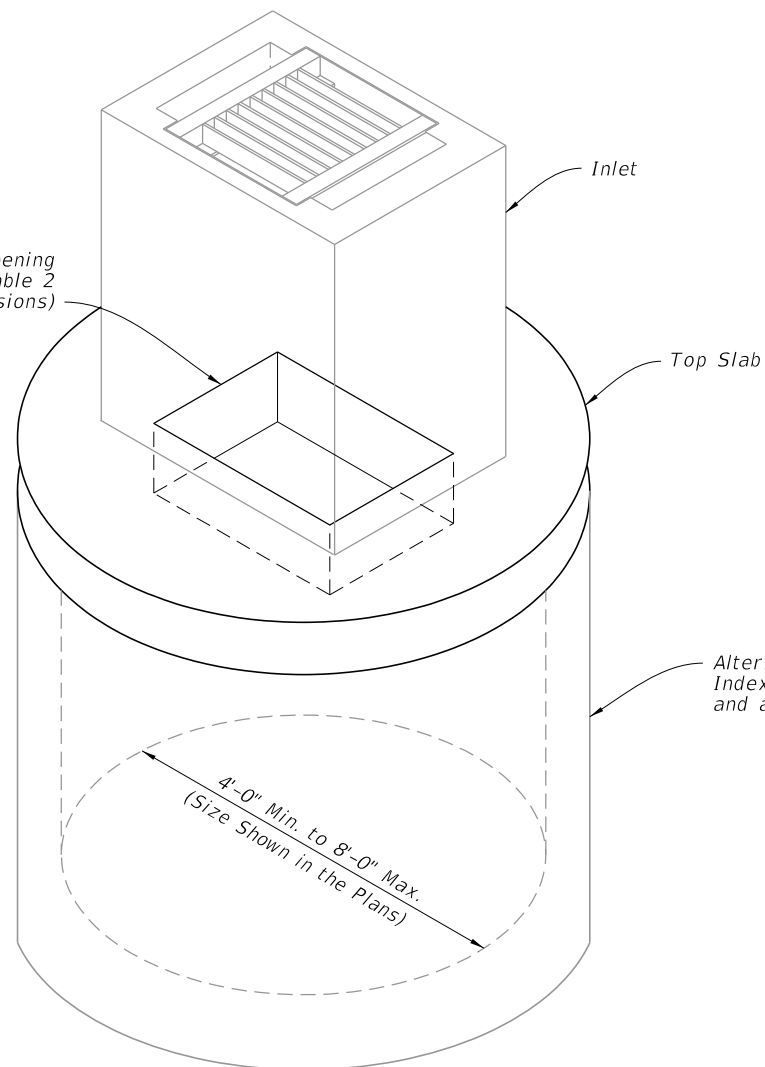


CONCRETE APRON AND SODDED AREA DETAILS

10/6/2022 1:47:41 PM

| | | | | | | | |
|---------------------------|----------|--------------|--|------------------------------|---------------------------|------------------|-----------------|
| LAST REVISION 10/01/20 | REVISION | DESCRIPTION: |  | FY 2023-24 STANDARD PLANS | DITCH BOTTOM INLET TYPE A | INDEX 425-050 | SHEET 3 of 4 |
|---------------------------|----------|--------------|--|------------------------------|---------------------------|------------------|-----------------|

Centered Opening
(See Table 2
for Dimensions)



| BOTTOM STRUCTURE DIAMETER | OPENING SIZE | |
|---------------------------------|---------------|------|
| | Min. | Max. |
| 4'-0" to 8'-0" | 2'-0" x 3'-1" | -- |

ISOMETRIC VIEW

2 Way Reinforcement
(See Tables 3 & 4)

E

E

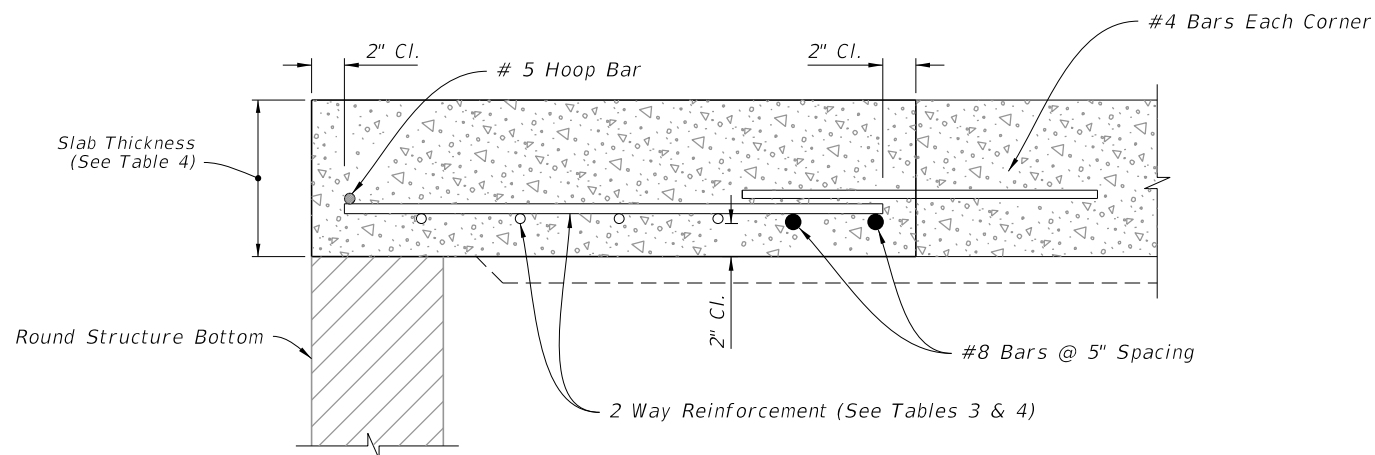
Centered Opening
(See Table 2
for Dimensions)

#4 Bar Each Corner
(2'-0" Min. Length)

#5 Hoop Bar
(Peripheral Reinforcement)

#8 Bars

PLAN



SECTION E-E

TOP SLAB REINFORCEMENT DETAILS

| SCHEDULE | GRADE 60 (BAR) OR 65 KSI & 70 KSI (WIRE FABRIC) In. ² /ft. |
|----------|--|
| A | 0.20 |
| B | 0.24 |
| C | 0.37 |
| D | 0.53 |
| E | 0.73 |
| F | 1.06 |
| G | 1.45 |

| STRUCTURE DEPTH | SLAB THICKNESS | REINFORCING (2 WAY) SCHEDULE |
|--------------------|-------------------|------------------------------------|
| SIZE: 4'-0" | | |
| ≥0.5'-40' | 9½" | C |
| SIZE: 5'-0" | | |
| ≥0.5'-30' | 9½" | C |
| 30'-40' | 9½" | D |
| SIZE: 6'-0" | | |
| 0.5'-8' | 9½" | B |
| 8'-18' | 9½" | C |
| 18'-30' | 9½" | D |
| 30'-37' | 9½" | E |
| 37'-40' | 9½" | G |
| SIZE: 8'-0" | | |
| ≥0.5'-9' | 11½" | C |
| 9'-15' | 11½" | D |
| 15'-23' | 11½" | E |
| 23'-33' | 11½" | E |
| 33'-40' | 11½" | G |

ALTERNATE A STRUCTURE BOTTOM - TOP SLAB DETAILS

10/19/2022 8:00:32 AM

| LAST REVISION | DESCRIPTION: |
|---------------|--------------|
| 10/01/20 | |



FY 2023-24
STANDARD PLANS

DITCH BOTTOM INLET TYPE A

INDEX
425-050

SHEET
4 of 4