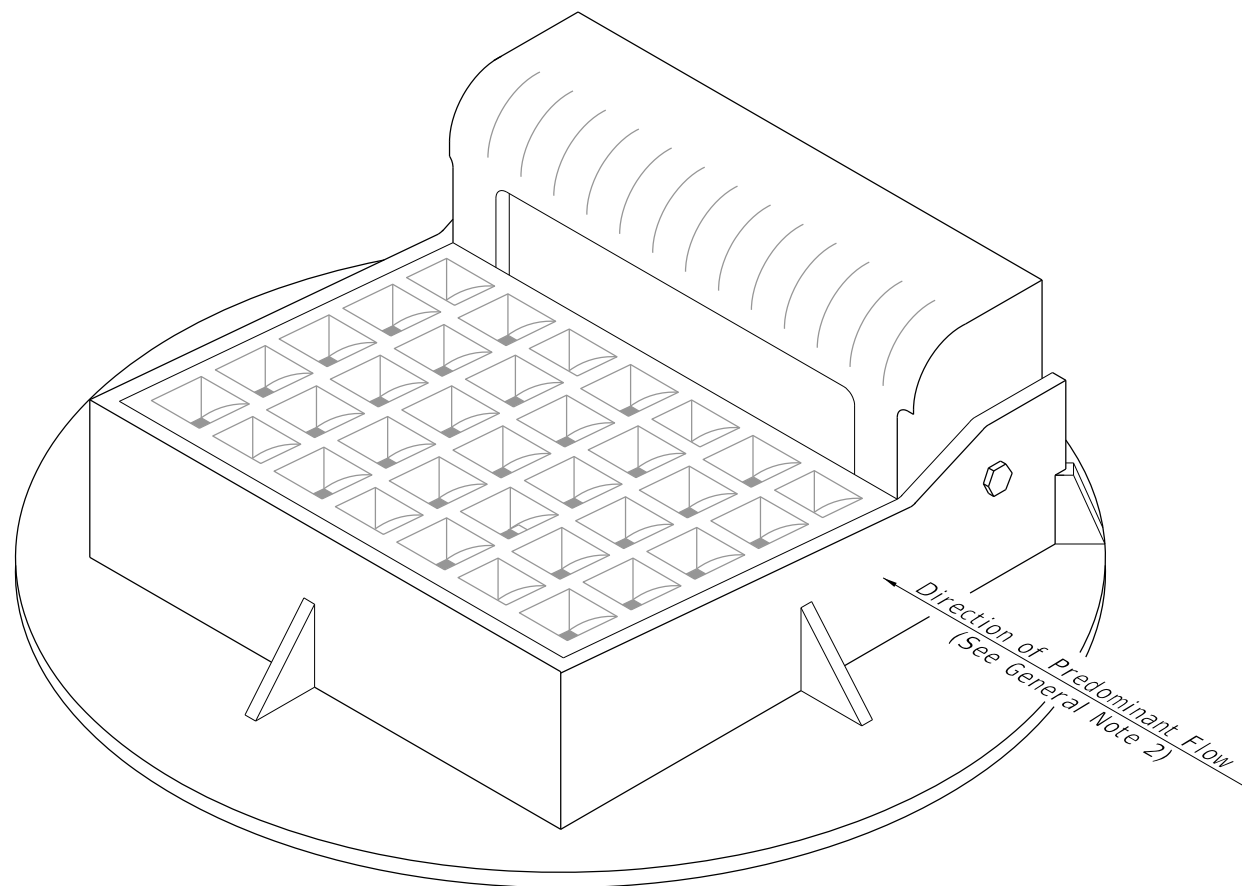


**GENERAL NOTES:**

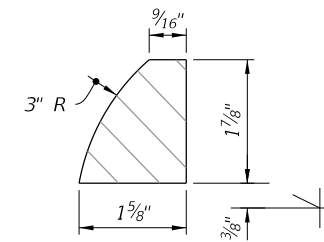
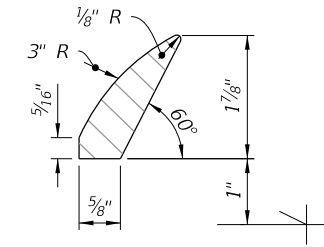
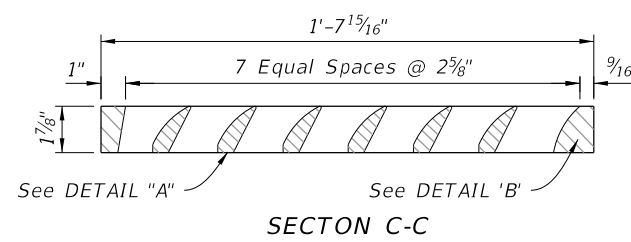
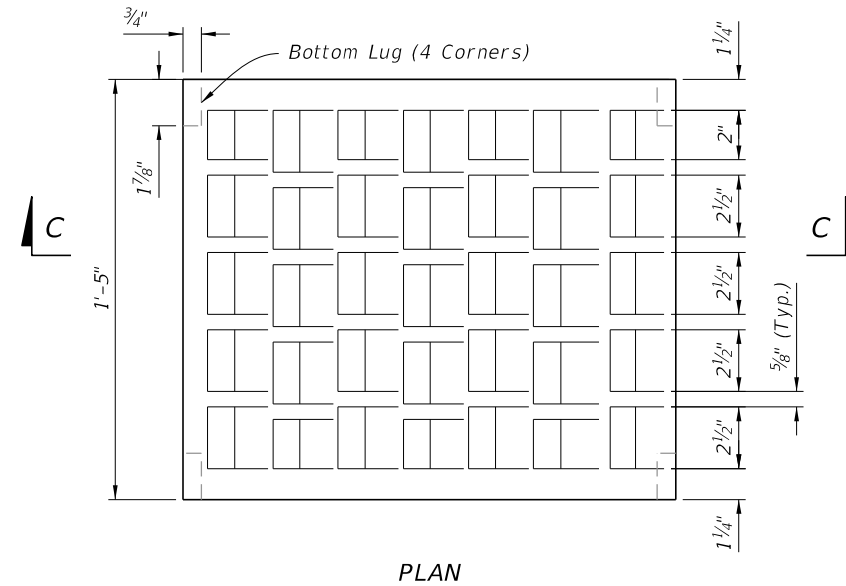
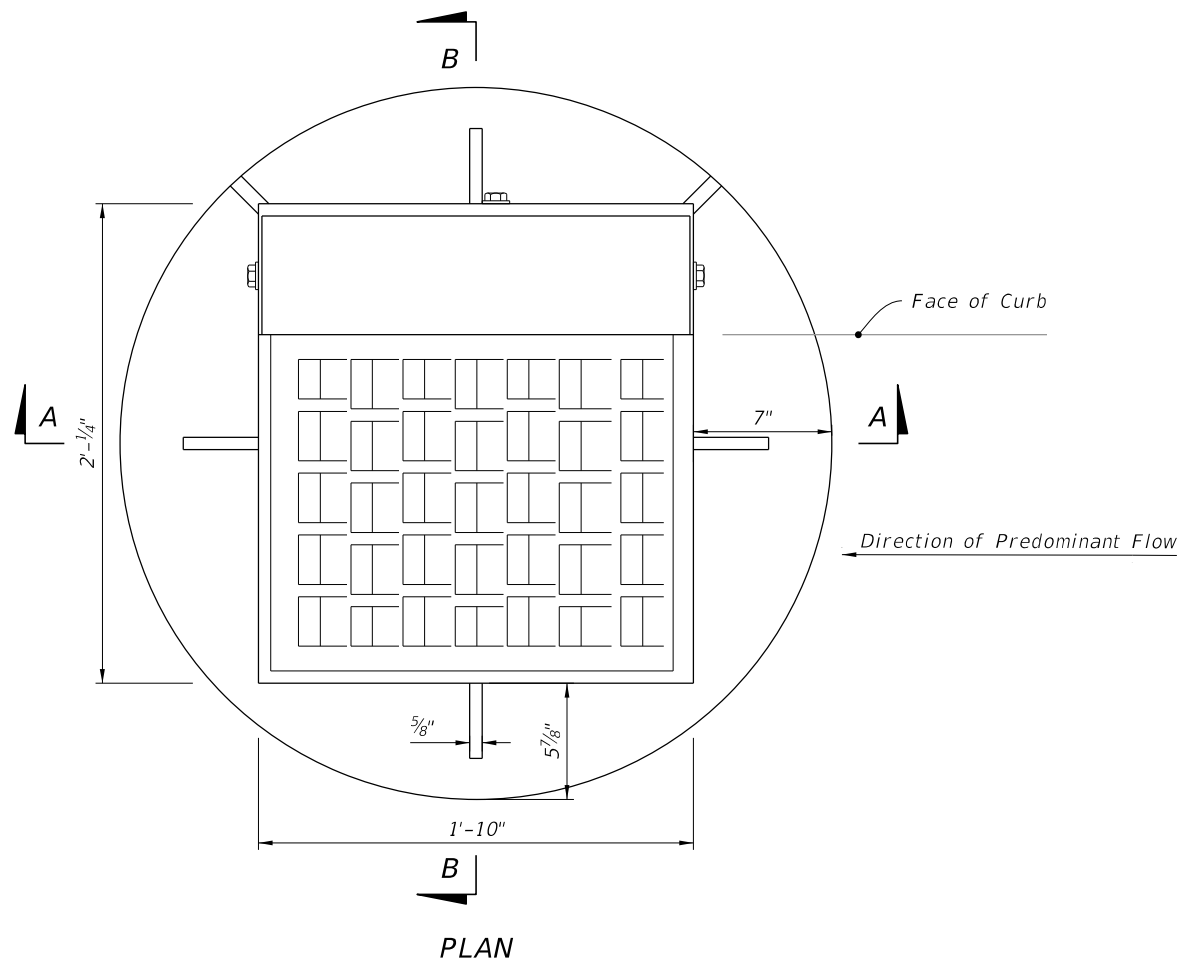
1. Work this Index with Index 425-001 and Index 425-010.
2. Orient grate with vanes directed toward predominant flow.
3. Provide 1¼" minimum cover for steel in slab tops unless otherwise shown. Tops may be either cast-in-place or precast concrete.
4. Place top slab openings such that 2 edges of inlet frame will be located directly above bottom or riser walls, for Alternate B applications.
5. When used on a structure with dimensions larger than those detailed on Sheet 3 and risers are not applied, Construct the top slab using Index 425-010 with the slab opening adjusted to 22"x24". The "Special Top Slab" on Index 425-010 is not permitted.
6. Frame may be adjusted with one to six courses of brick.
7. Vaned grates with approximately equal openings that satisfy AASHTO HL-93 loading are permitted. Provide reversible (right or left) grates.

| TABLE OF CONTENTS: |                            |
|--------------------|----------------------------|
| Sheet              | Description                |
| 1                  | General Notes and Contents |
| 2                  | Frame and Grate Details    |
| 3                  | Top Slab Details           |

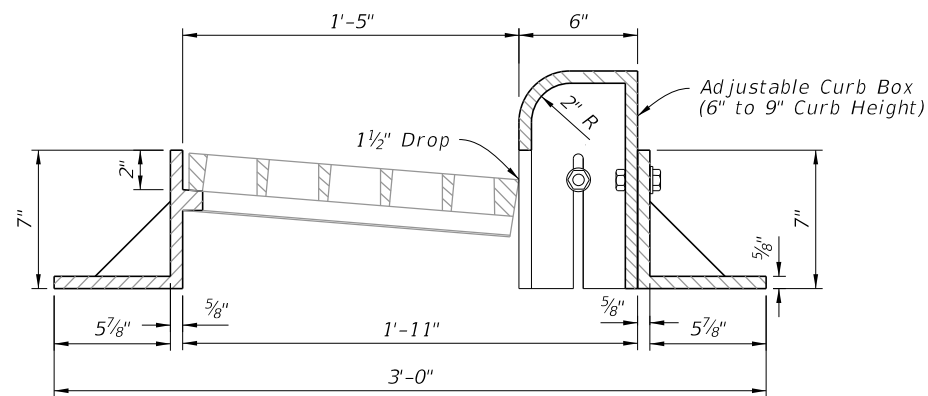
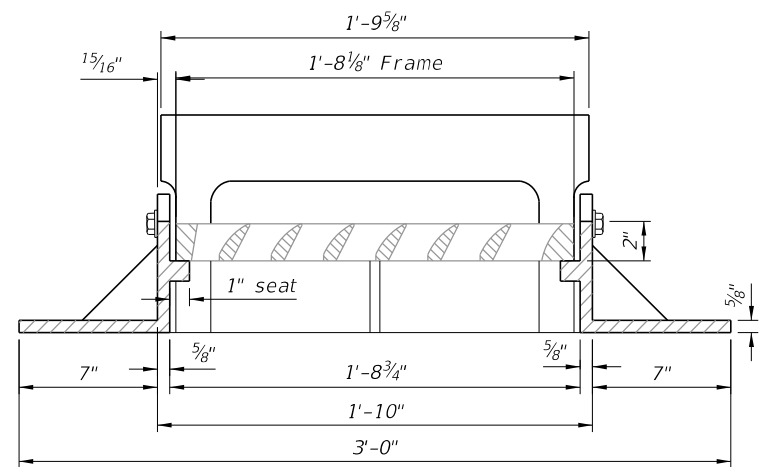


==== CURB INLET TOP TYPE 10 =====

10/6/2022 1:45:46 PM



GRATE DETAILS



FRAME AND GRATE DETAILS

FRAME AND GRATE DETAILS

10/6/2022 1:45:46 PM

|                           |              |
|---------------------------|--------------|
| LAST REVISION<br>10/01/20 | DESCRIPTION: |
|---------------------------|--------------|

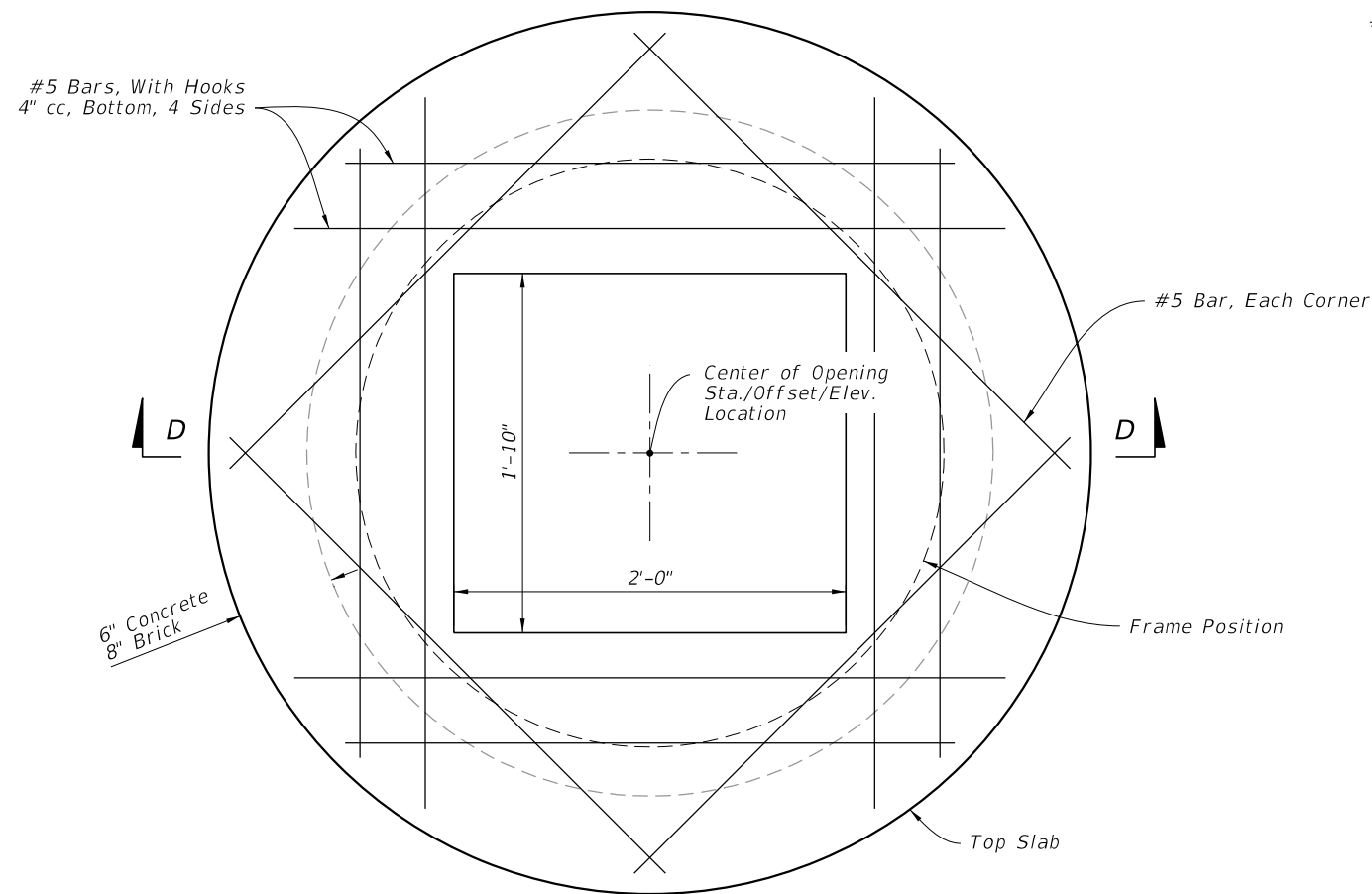


FY 2023-24  
STANDARD PLANS

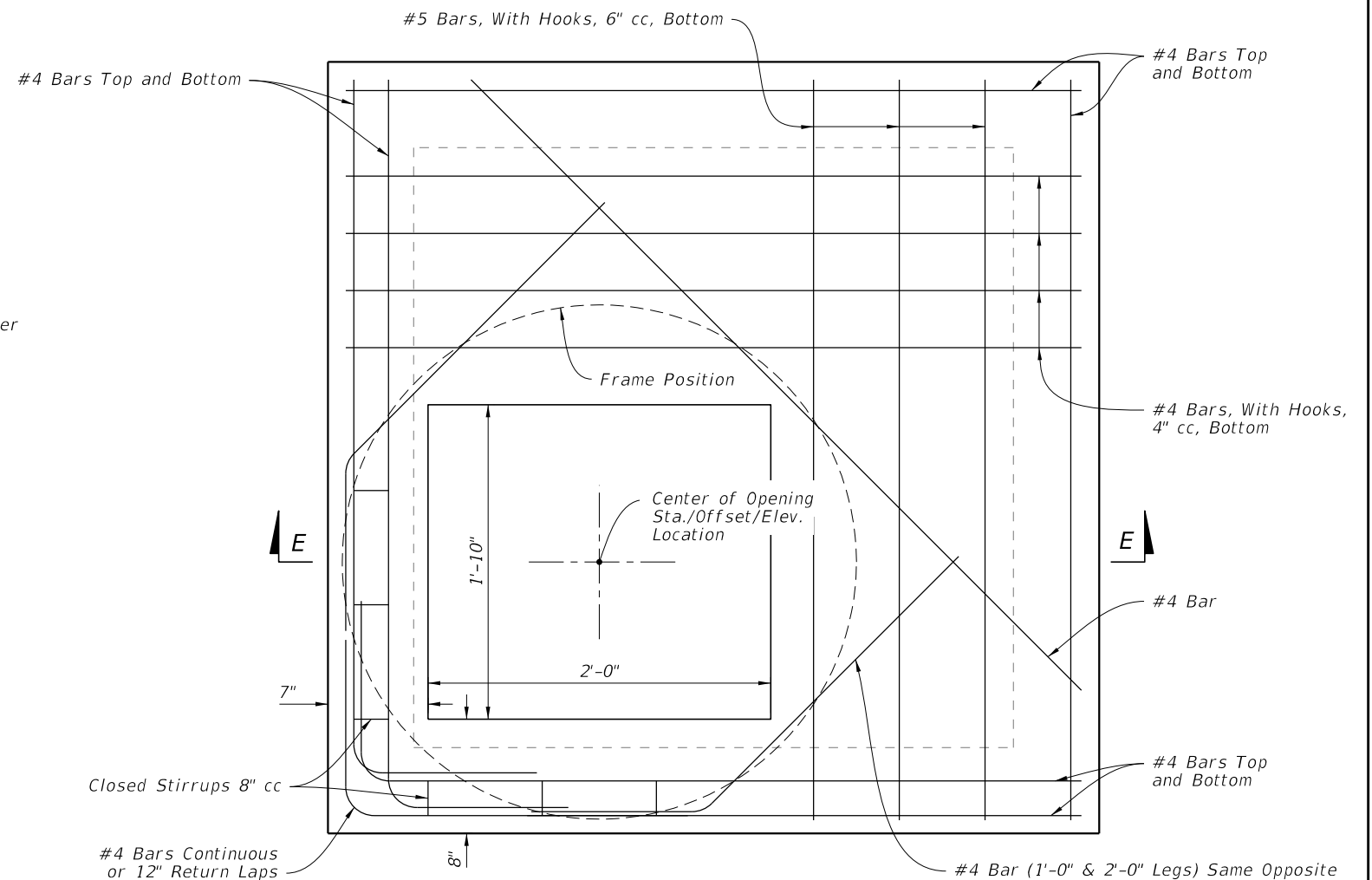
CURB INLET TYPE 10

INDEX  
425-025

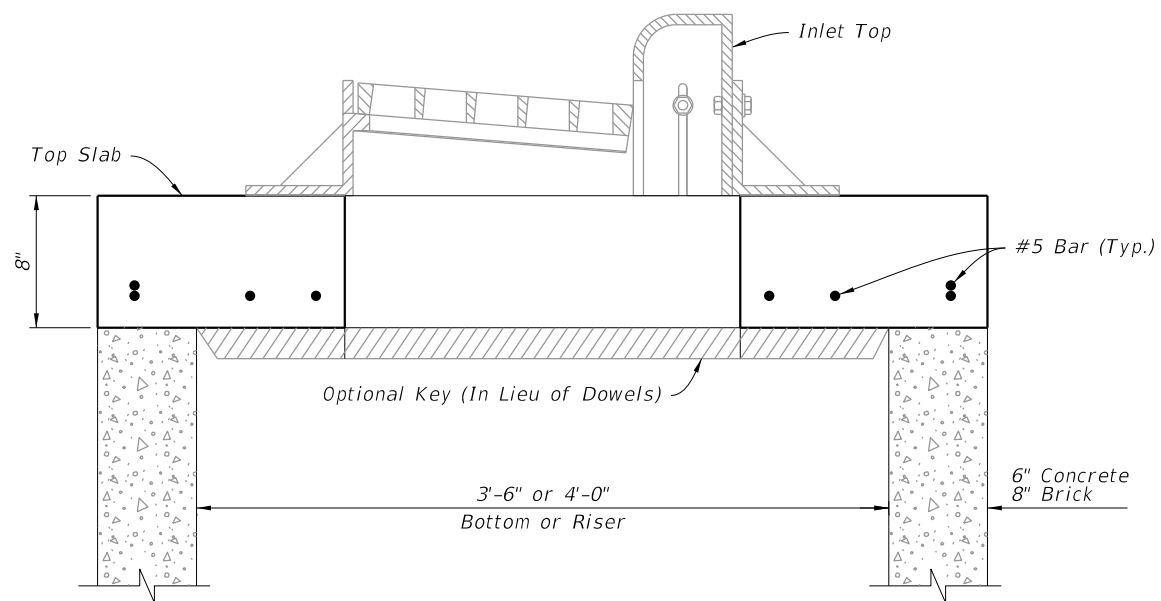
SHEET  
2 of 3



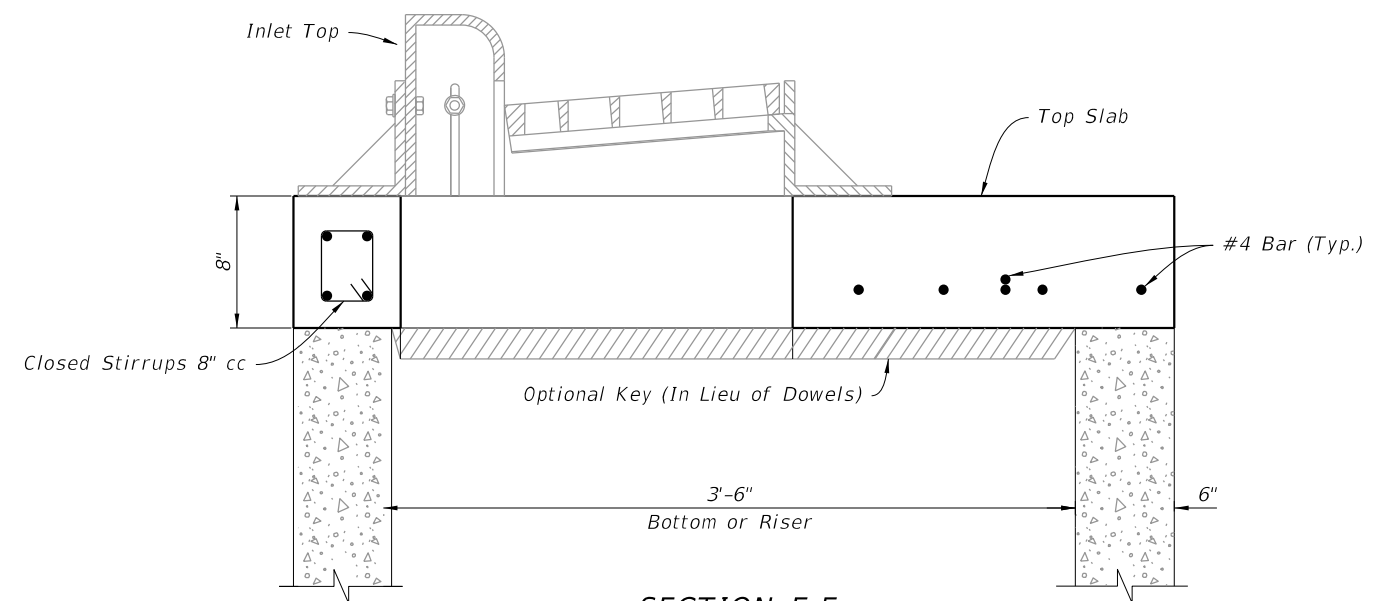
PLAN



PLAN



SECTION D-D



SECTION E-E

TOP SLAB DETAILS

10/6/2022 1:45:47 PM

|                           |              |
|---------------------------|--------------|
| LAST REVISION<br>10/01/20 | DESCRIPTION: |
|---------------------------|--------------|