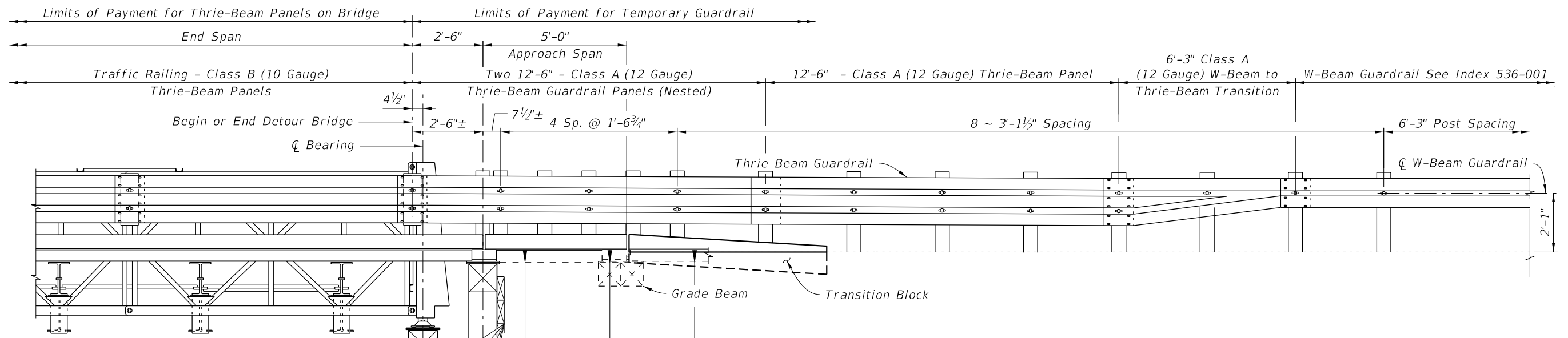



PARTIAL PLAN - APPROACH TRANSITION

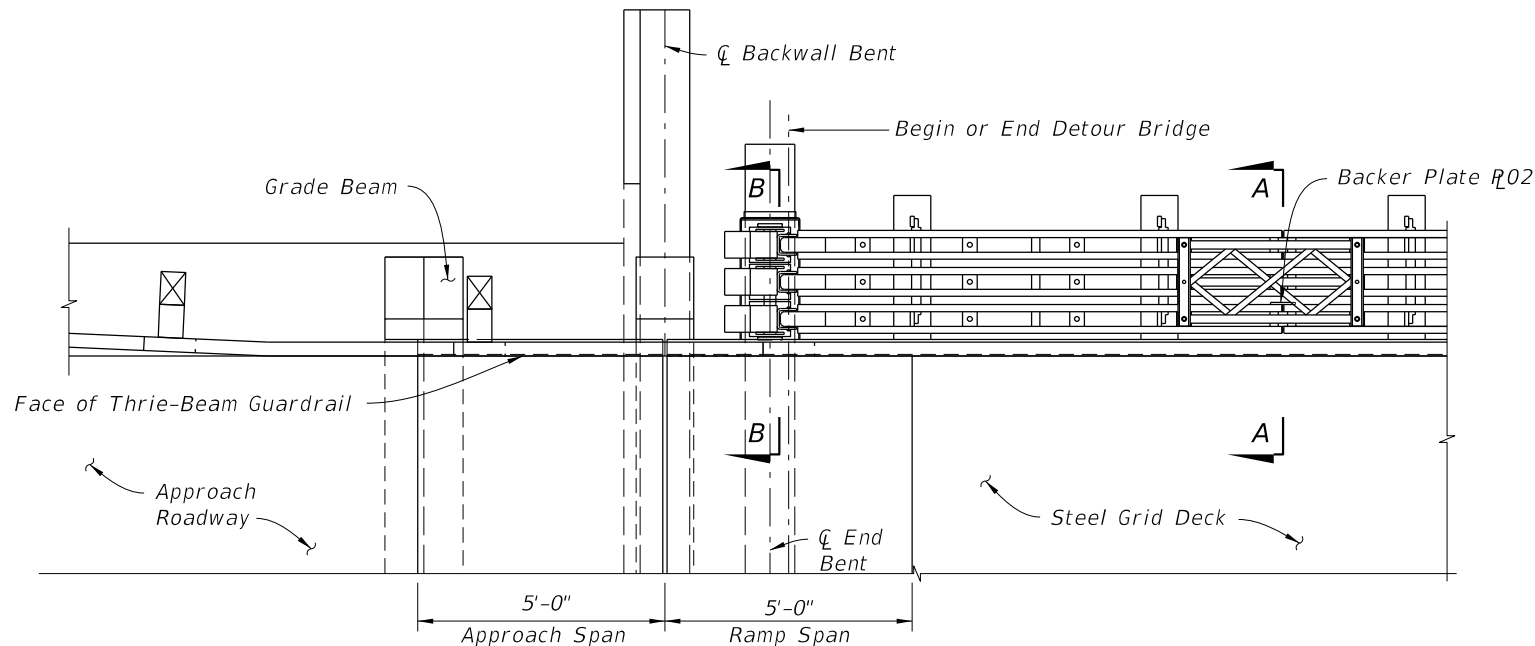


PARTIAL ELEVATION - APPROACH TRANSITION

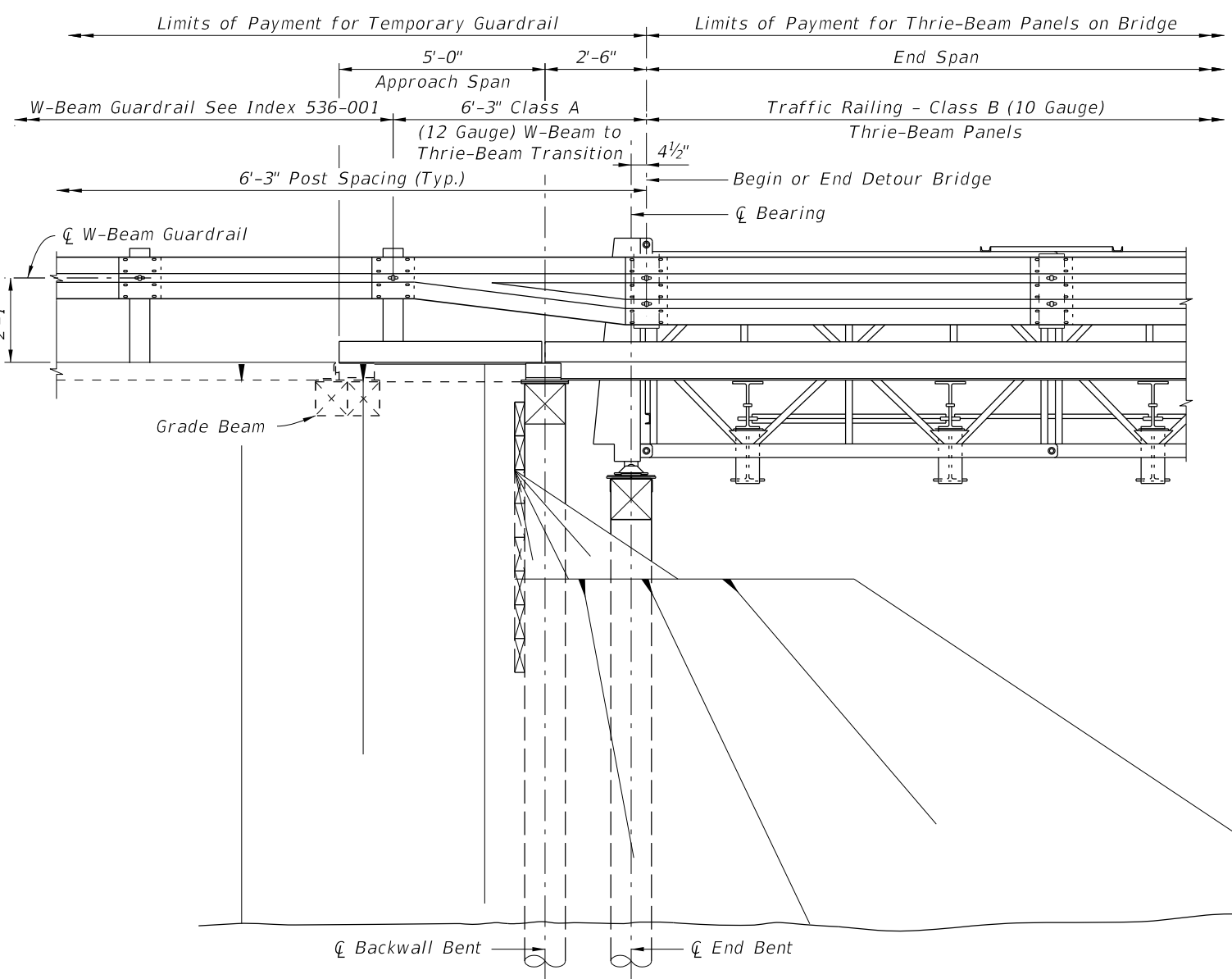
4/14/2023 10:01:04 AM

LAST REVISION 07/01/15	REVISION	DESCRIPTION:	 FY 2023-24 STANDARD PLANS	TEMPORARY DETOUR BRIDGE THRIE-BEAM GUARDRAIL	INDEX 102-240	SHEET 1 of 6
------------------------------	----------	--------------	--	---	------------------	-----------------

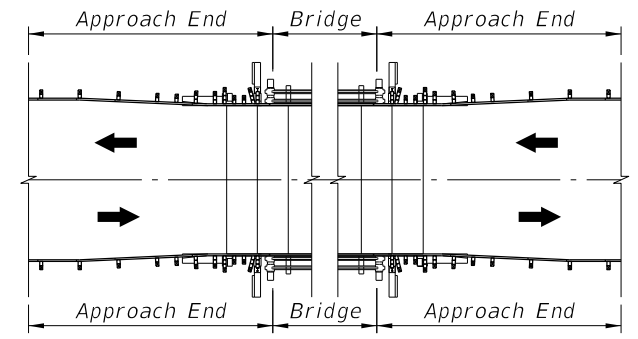
THRIE-BEAM GUARDRAIL APPROACH TRANSITION



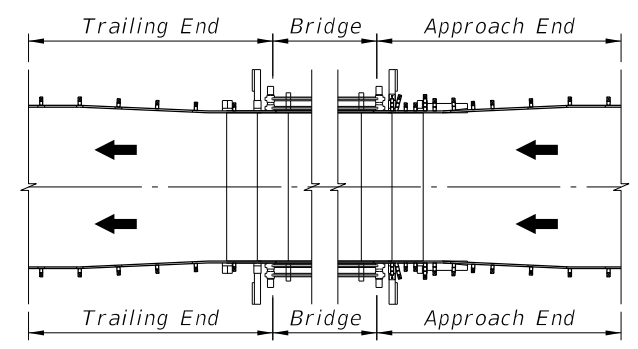
PARTIAL PLAN - TRAILING END



PARTIAL ELEVATION - TRAILING END



TWO-WAY TRAFFIC



ONE-WAY TRAFFIC

END TRANSITION APPLICATION DETAILS

4/14/2023 10:01:12 AM

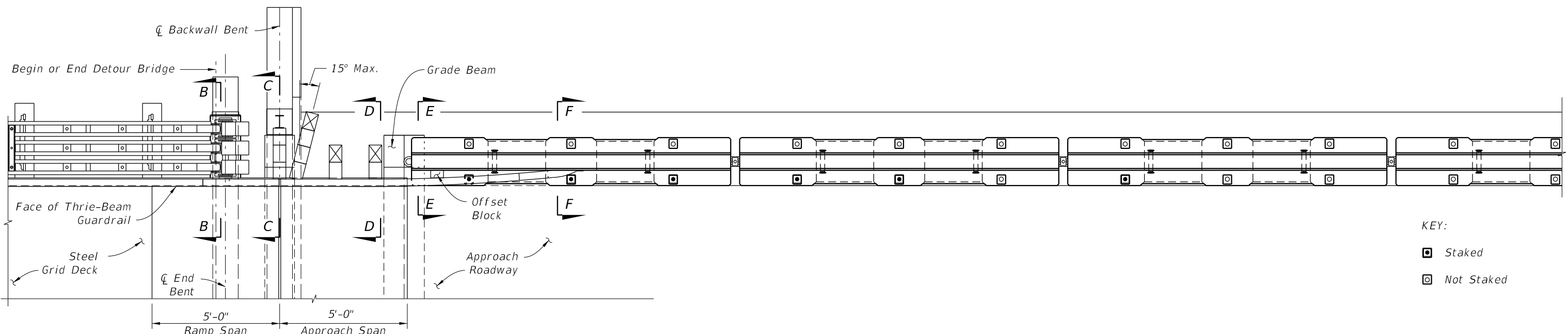
LAST REVISION	07/01/15	DESCRIPTION:
---------------	----------	--------------

FY 2023-24
STANDARD PLANS

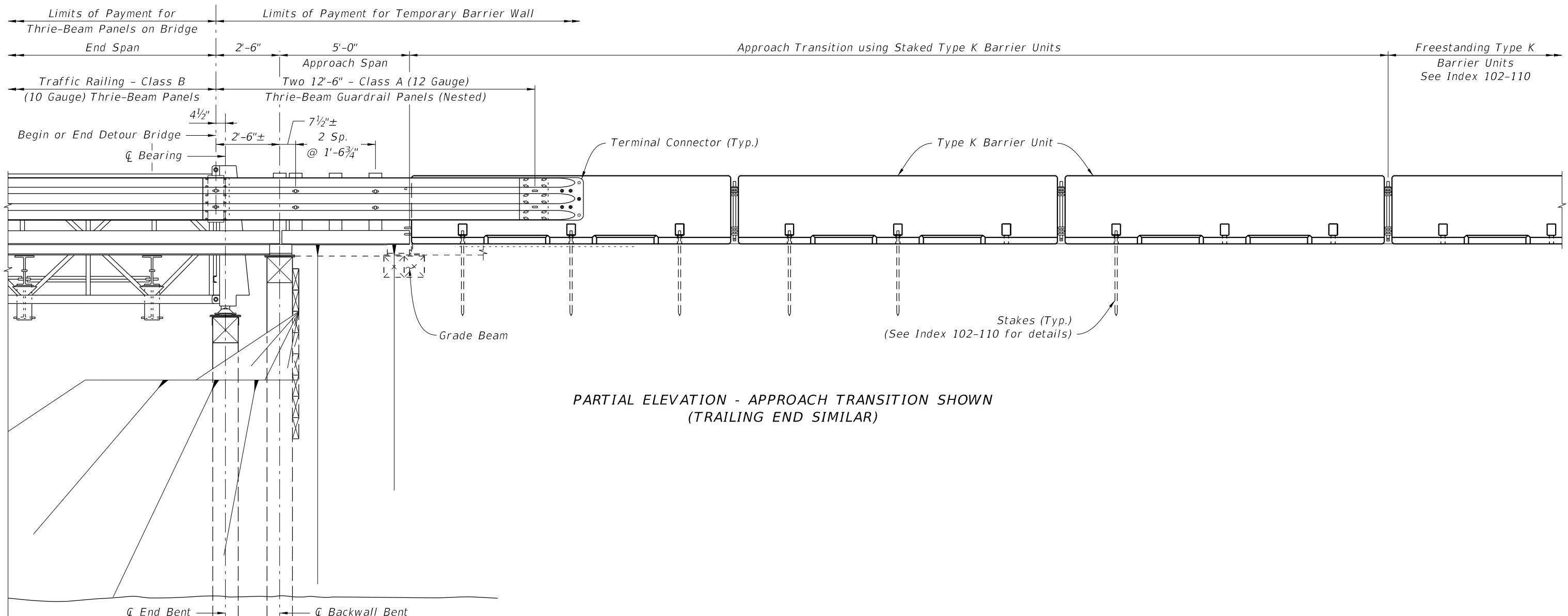
TEMPORARY DETOUR BRIDGE
THRIE-BEAM GUARDRAIL

INDEX	SHEET
102-240	2 of 6

THRIE-BEAM GUARDRAIL TRAILING END TRANSITION



PARTIAL PLAN - APPROACH TRANSITION SHOWN
(TRAILING END SIMILAR)

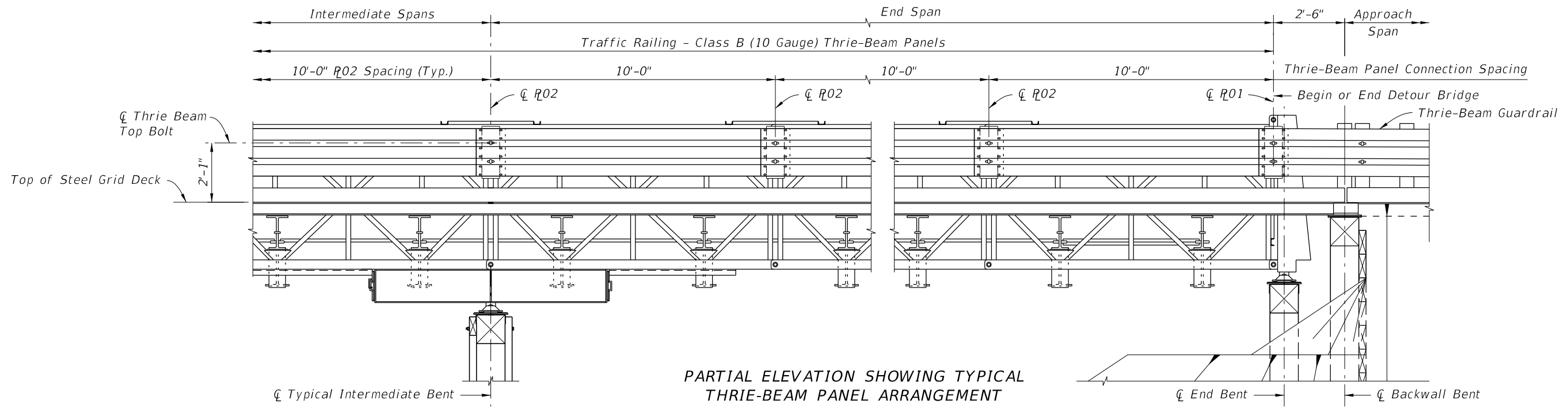


PARTIAL ELEVATION - APPROACH TRANSITION SHOWN
(TRAILING END SIMILAR)

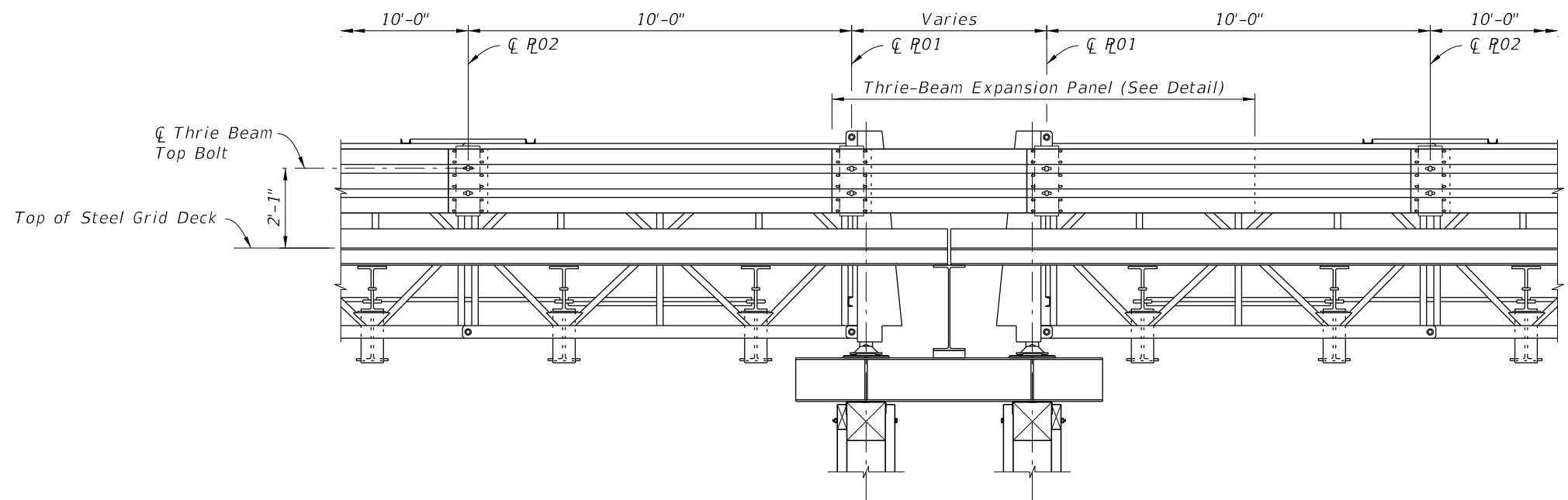
TYPE K BARRIER UNIT APPROACH TRANSITION

4/14/2023 10:01:20 AM

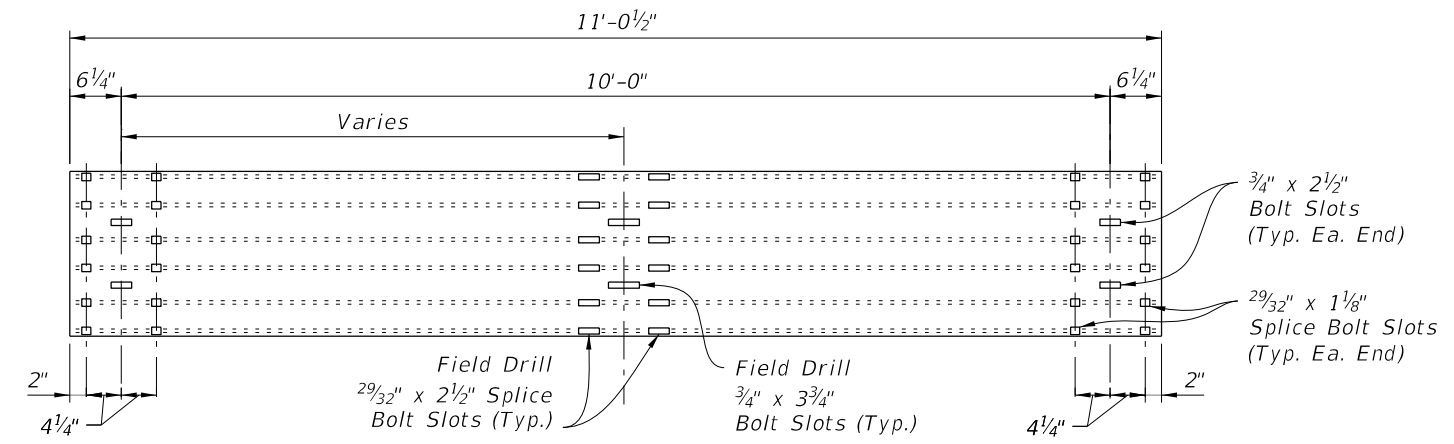
LAST REVISION 07/01/15	DESCRIPTION:	 FY 2023-24 STANDARD PLANS	TEMPORARY DETOUR BRIDGE THRIE-BEAM GUARDRAIL	INDEX 102-240	SHEET 3 of 6
---------------------------	--------------	--	---	------------------	-----------------



PARTIAL ELEVATION SHOWING TYPICAL THRIE-BEAM PANEL ARRANGEMENT




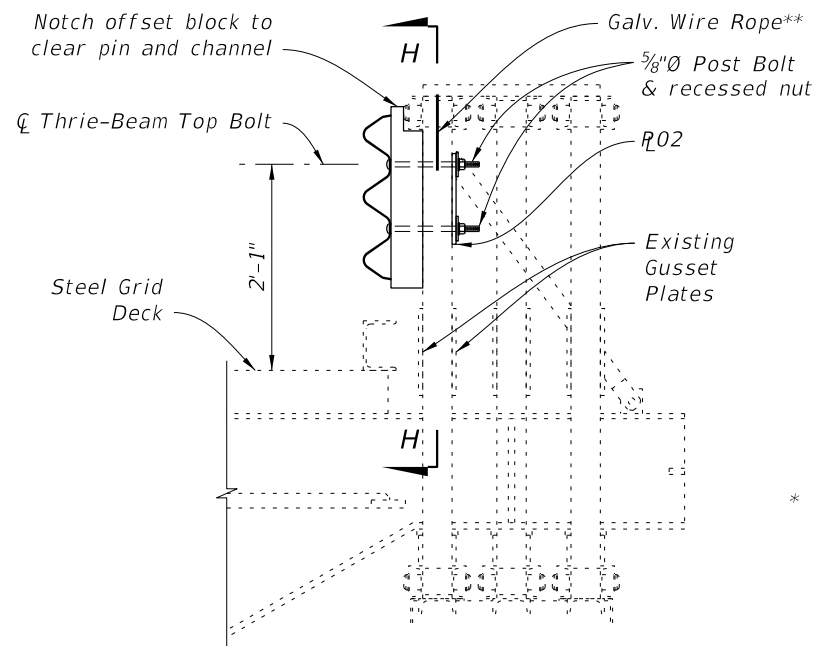
PARTIAL ELEVATION SHOWING THRIE-BEAM PANELS AT EXPANSION JOINT



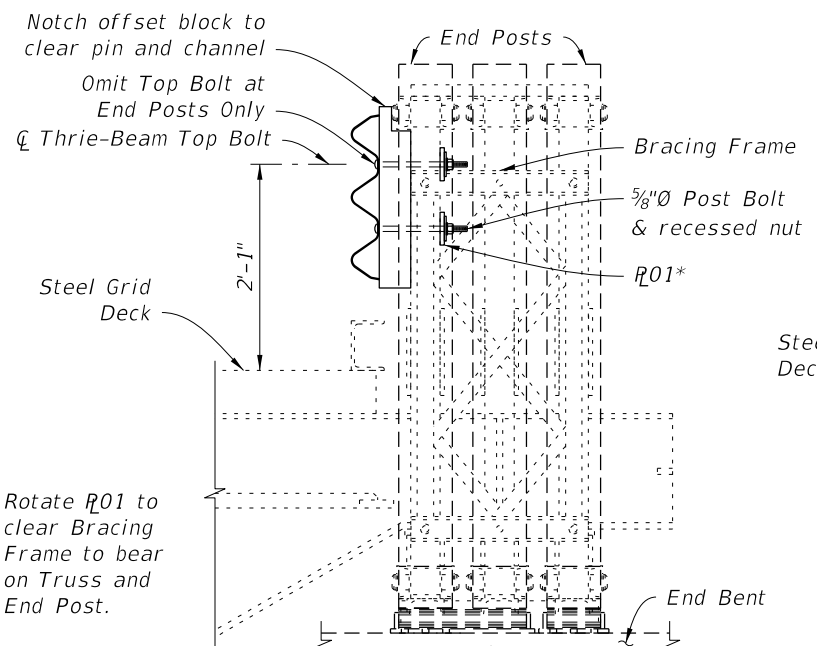
THRIE-BEAM EXPANSION PANEL DETAIL

10/6/2022 12:47:22 PM

LAST REVISION 07/01/15	REVISION	DESCRIPTION:		FY 2023-24 STANDARD PLANS	TEMPORARY DETOUR BRIDGE THRIE-BEAM GUARDRAIL	INDEX 102-240	SHEET 4 of 6
---------------------------	----------	--------------	--	------------------------------	---	------------------	-----------------

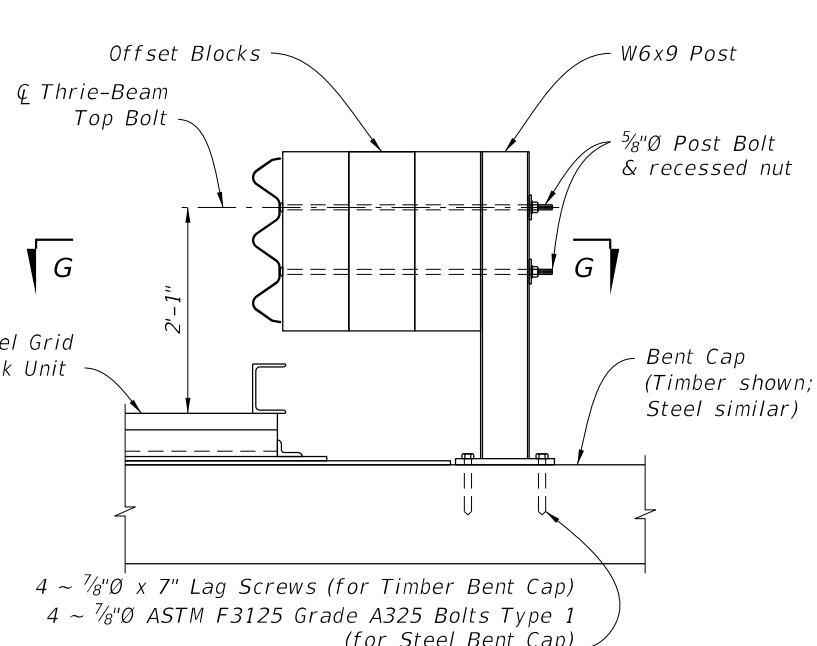


SECTION A-A



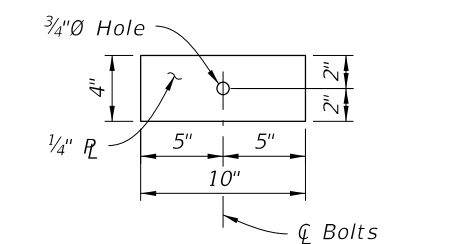
SECTION B-B

* Rotate R01 to clear Bracing Frame to bear on Truss and End Post.

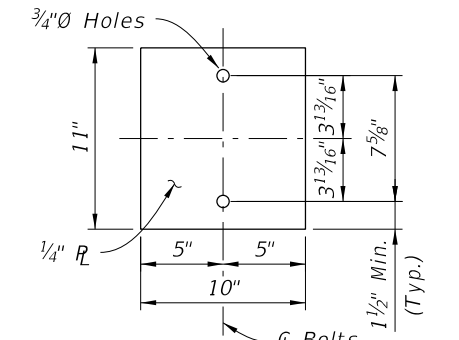


SECTION C-C

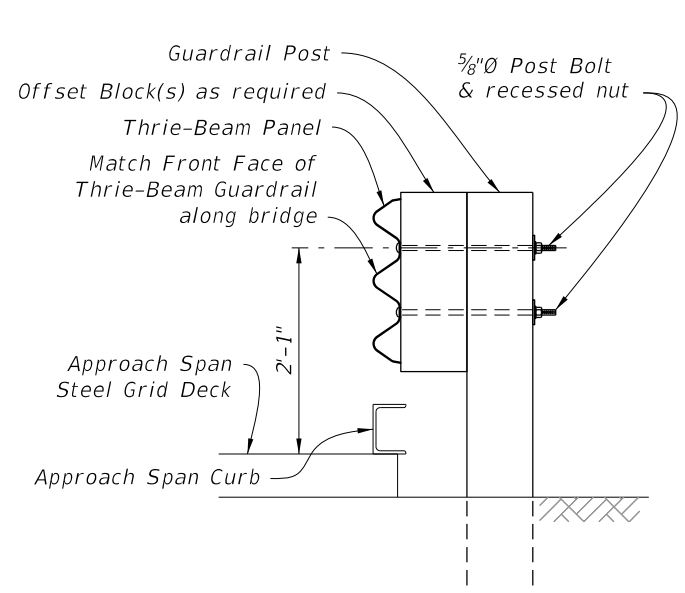
4 ~ 7/8"Ø x 7" Lag Screws (for Timber Bent Cap)
4 ~ 7/8"Ø ASTM F3125 Grade A325 Bolts Type 1 (for Steel Bent Cap)



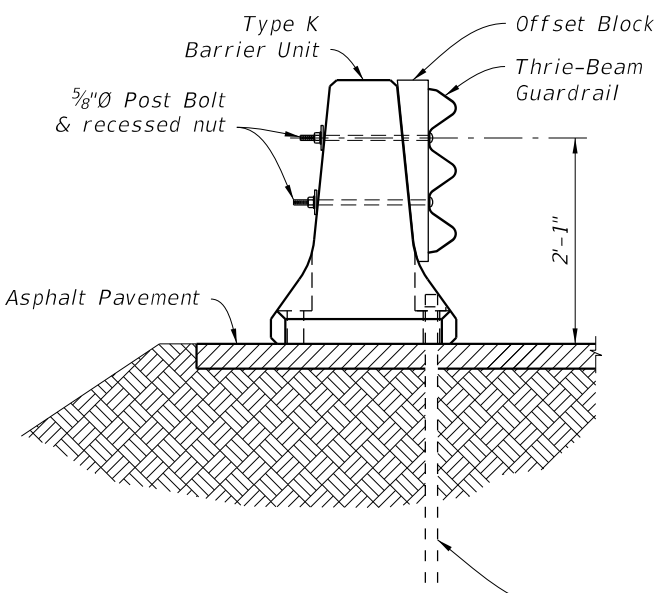
BACKER PLATE R01 DETAIL



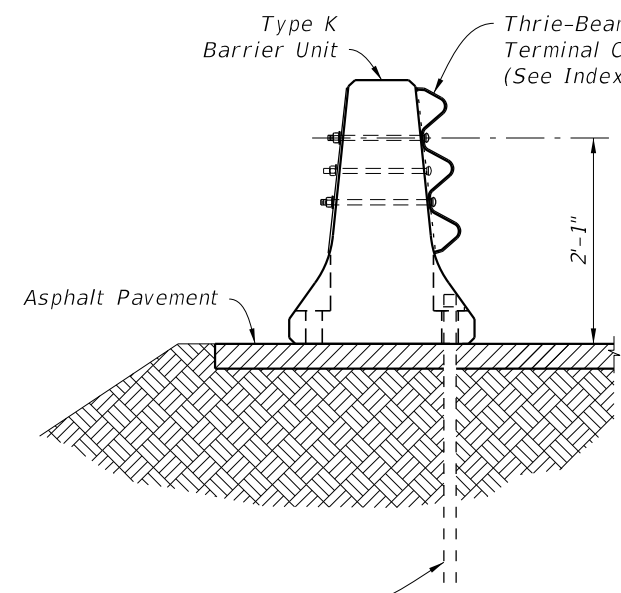
BACKER PLATE R02 DETAIL



SECTION D-D

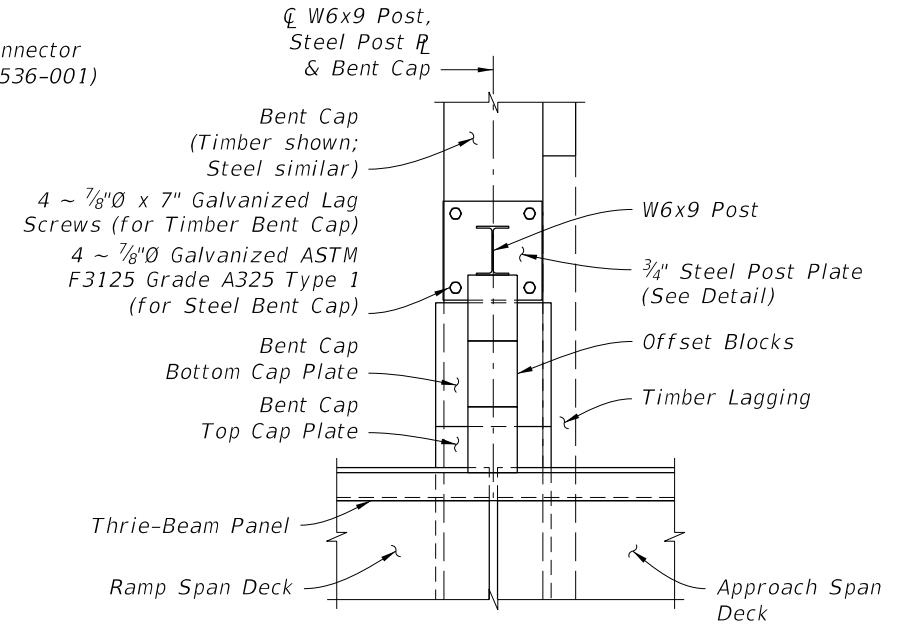


SECTION E-E

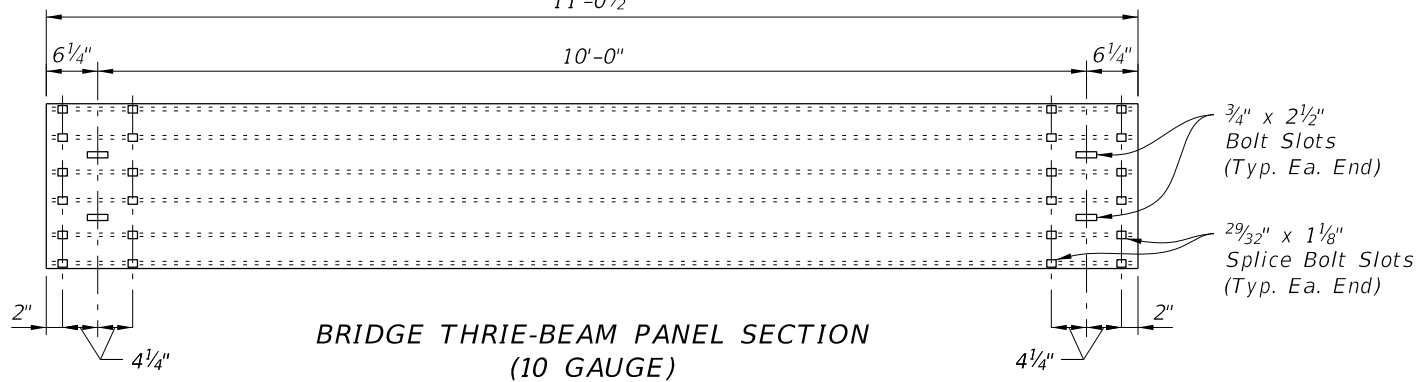


SECTION F-F

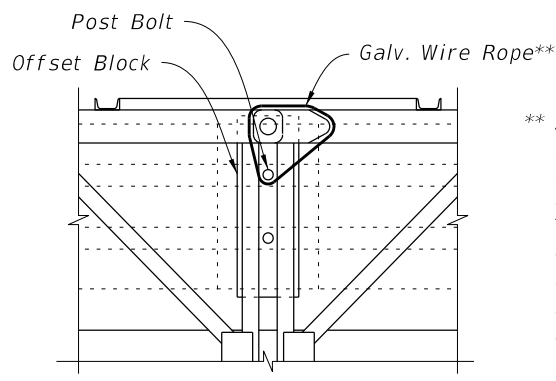
Stakes (See Index 102-110 for details)



VIEW G-G
(Adjacent Post and Offset Blocks not shown for clarity)

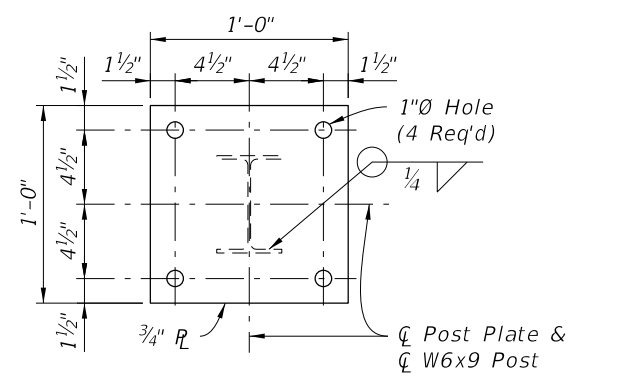


BRIDGE THRIE-BEAM PANEL SECTION
(10 GAUGE)



SECTION H-H

** As directed by the Engineer in order to limit vibration induced vertical displacement of the Thrie-Beam Panels, provide Contractor supplied, one time use, commercially available 3/16"Ø (Min.) Galvanized Wire Rope w/ Ferrules (or other approved wire type) positioned and tensioned as required to secure the Panels.

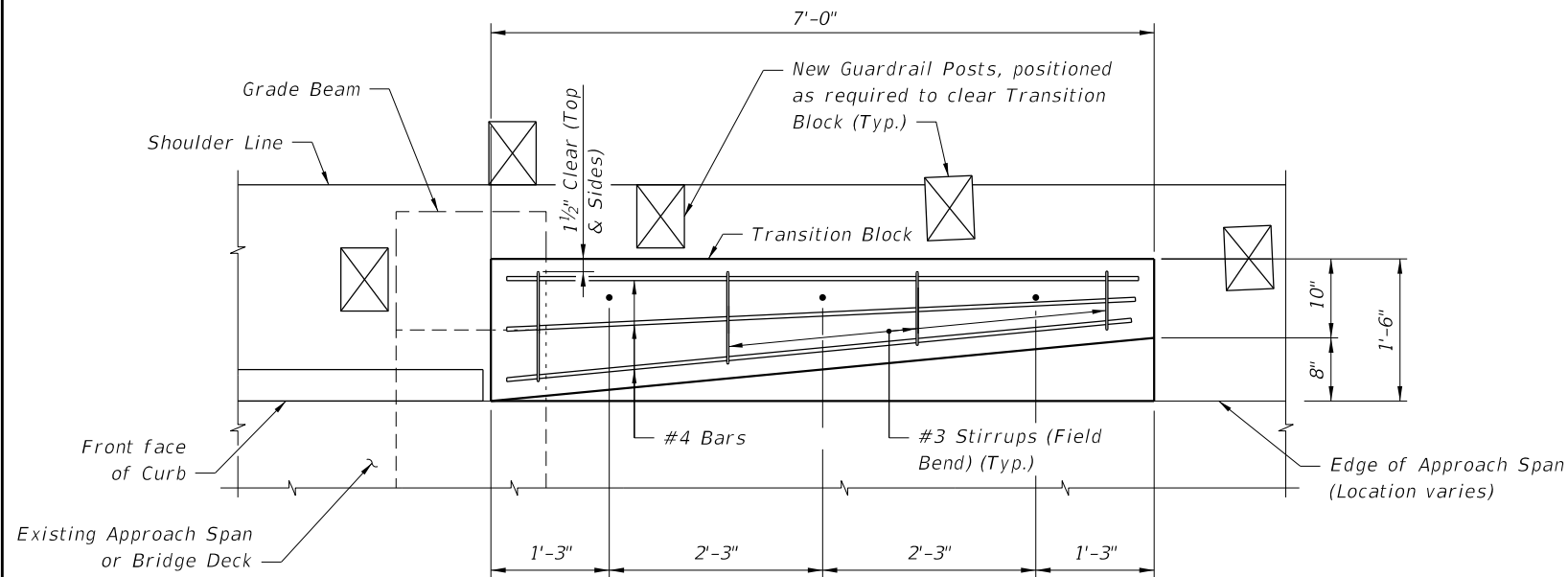


STEEL POST PLATE DETAIL

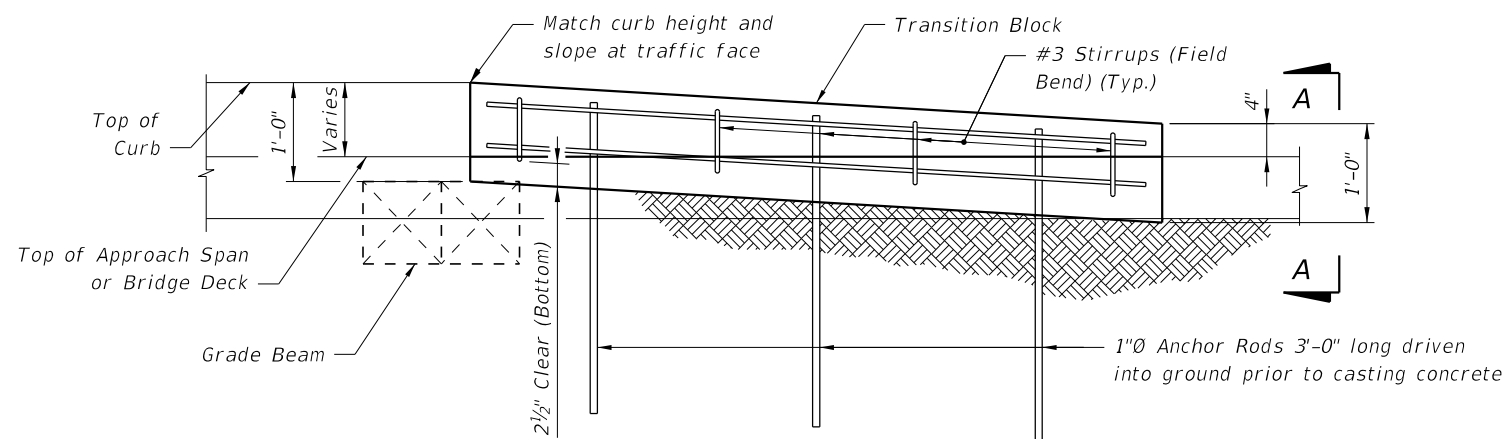
SECTIONS AND DETAILS

4/14/2023 10:01:27 AM

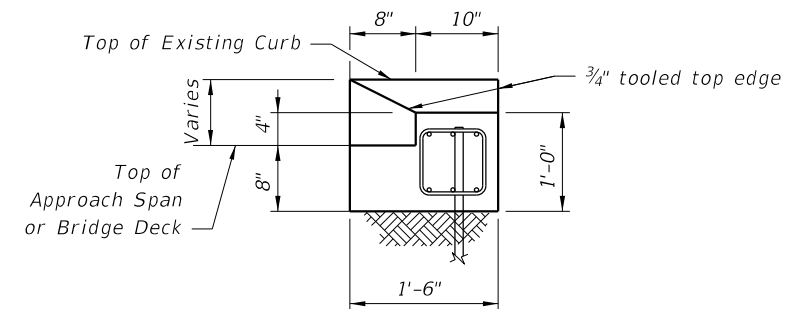
LAST REVISION 11/01/16	DESCRIPTION:		FY 2023-24 STANDARD PLANS	TEMPORARY DETOUR BRIDGE THRIE-BEAM GUARDRAIL	INDEX	SHEET
					102-240	5 of 6



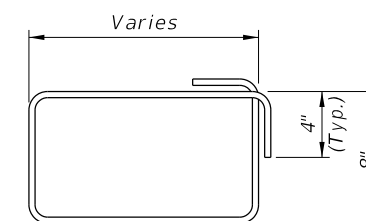
PLAN VIEW OF TRANSITION BLOCK
(GUARDRAIL NOT SHOWN FOR CLARITY)



ELEVATION OF TRANSITION BLOCK
(GUARDRAIL AND POSTS NOT SHOWN FOR CLARITY)



END VIEW A-A



#3 STIRRUP (FIELD BEND)

NOTES:

REINFORCING STEEL: Reinforcing steel shall be ASTM A615, Grade 60.

ANCHOR RODS: Steel Anchor Rods shall be ASTM A36, ASTM A709 Grade 36 or ASTM A615 Grade 60 hot-dip galvanized in accordance with Specification Section 962.

ESTIMATED QUANTITIES

ITEM	UNIT	QUANTITY
Concrete Class NS	CY	0.4
Reinforcing Steel	LB	61
Guardrail (Reset)	LF	12.5

4/14/2023 10:01:35 AM