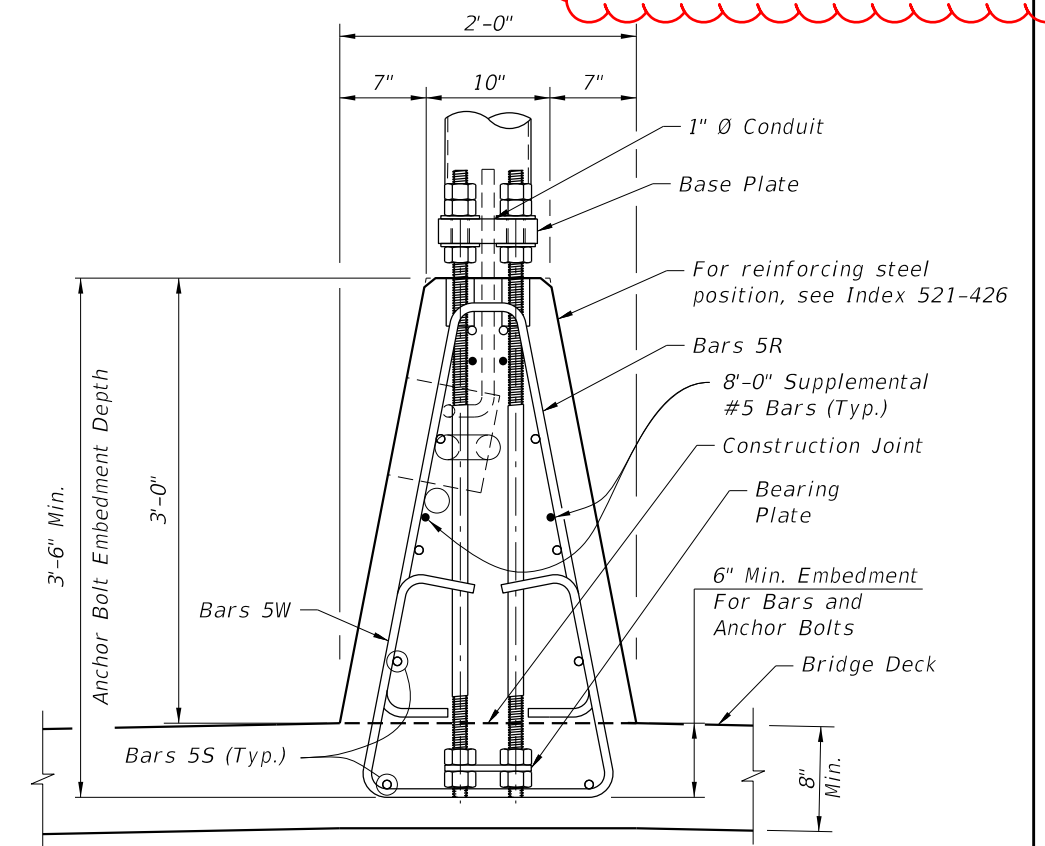
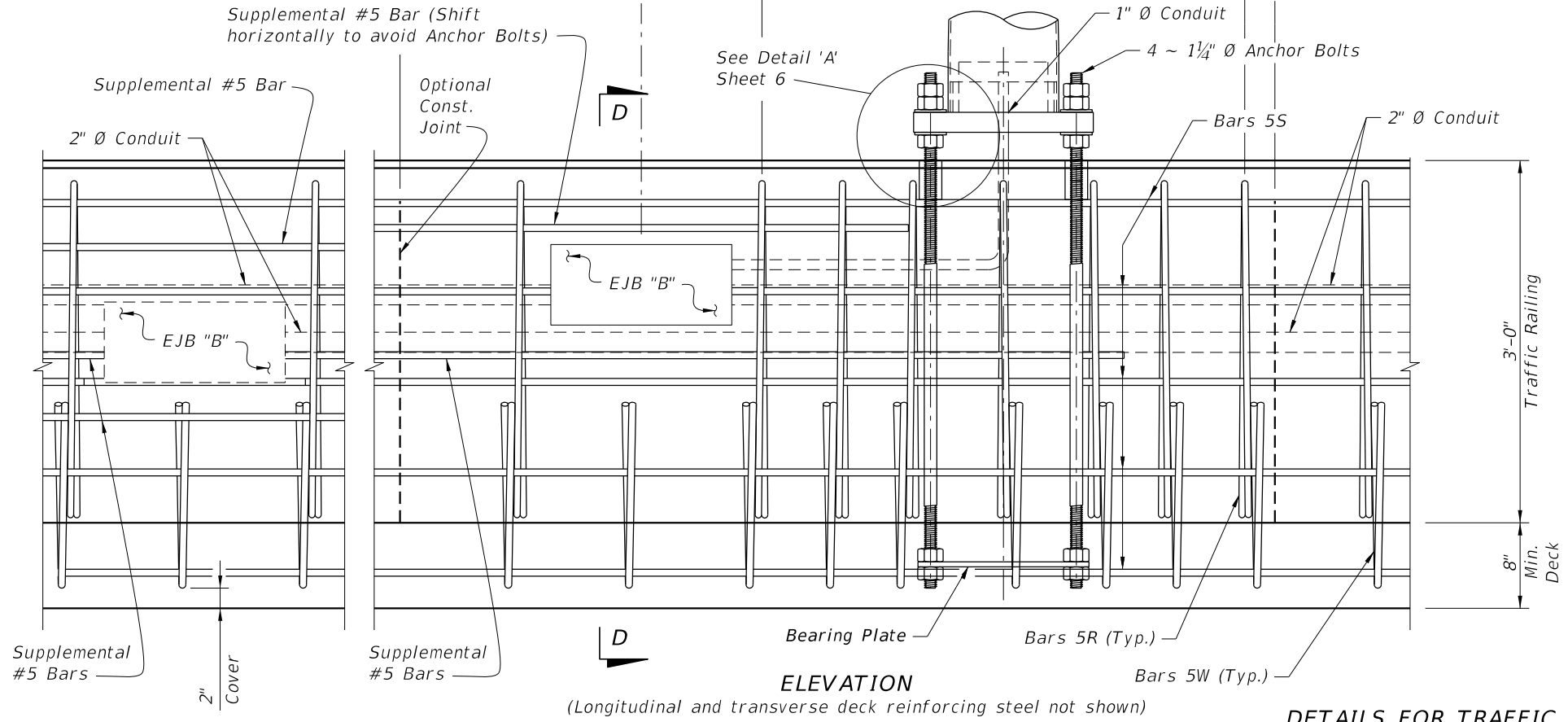
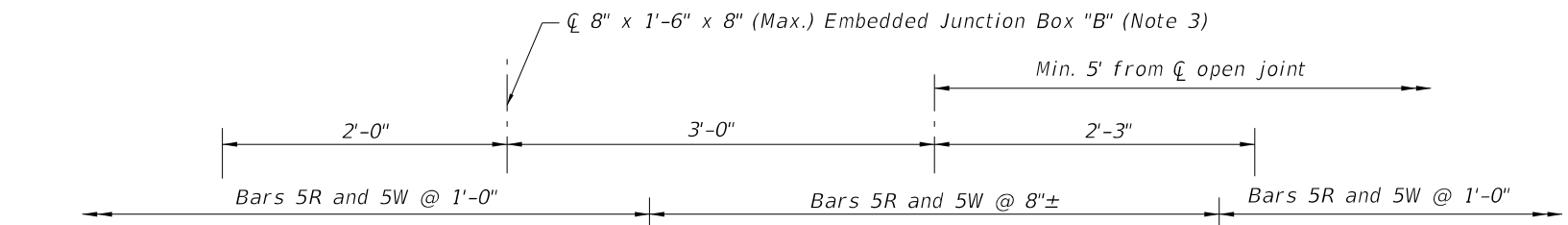
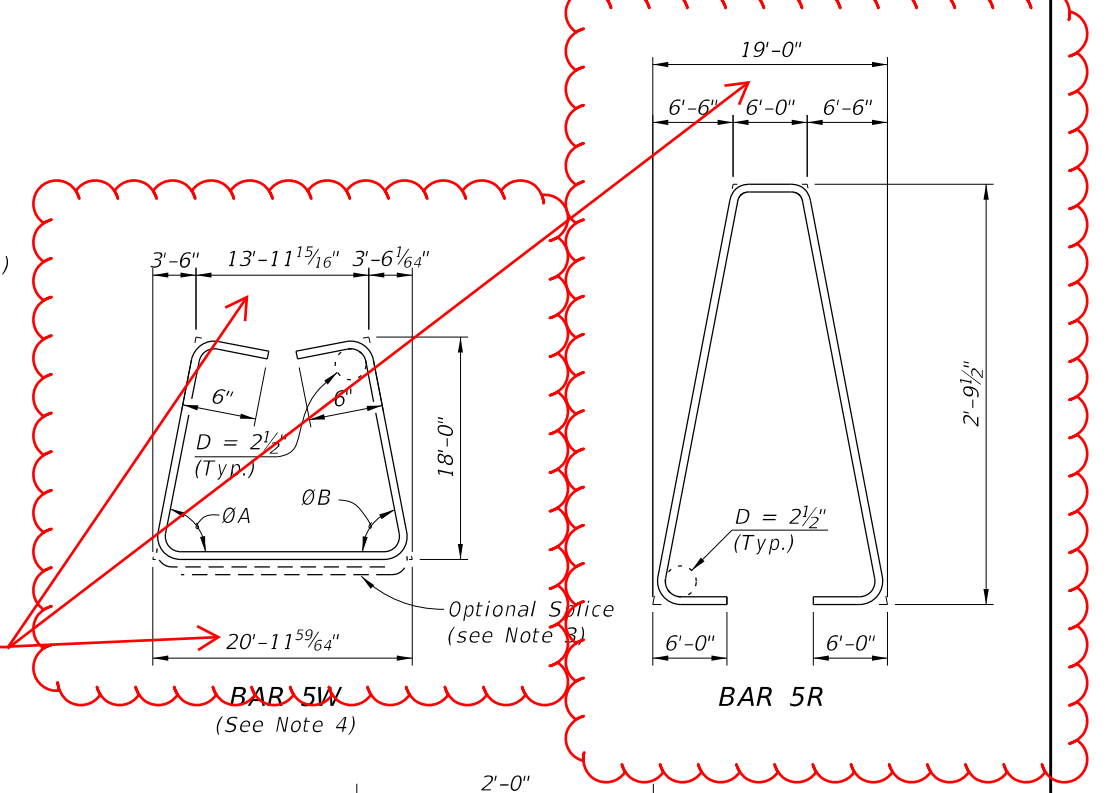


**PLAN**  
(Reinforcing steel and 2"  $\bar{O}$  Conduit not shown)

Corrected Dimensions



- NOTES:**
1. For Base Plate Details, Bearing Plate Details, and Detail 'A', see Sheet 6.
  2. See Index 521-426 for details of adjacent Traffic Railing (Median 36" Single-Slope) and for angles  $\bar{O}A$  and  $\bar{O}B$ .
  3. See Index 630-010 for Conduit, EJB and supplemental reinforcing details.
  4. At the Contractor's option, Bars 5W may be fabricated as a two piece bar with a 1'-2" lap splice at the bottom legs.

**DETAILS FOR TRAFFIC RAILING (MEDIAN 36" SINGLE-SLOPE) MOUNTED ALUMINUM LIGHT POLE**

10/6/2022 2:42:50 PM

LAST REVISION 11/01/22	DESCRIPTION:		FY 2023-24 STANDARD PLANS	STANDARD ALUMINUM LIGHTING	INDEX 715-002	SHEET 9 of 9
REVISION						