

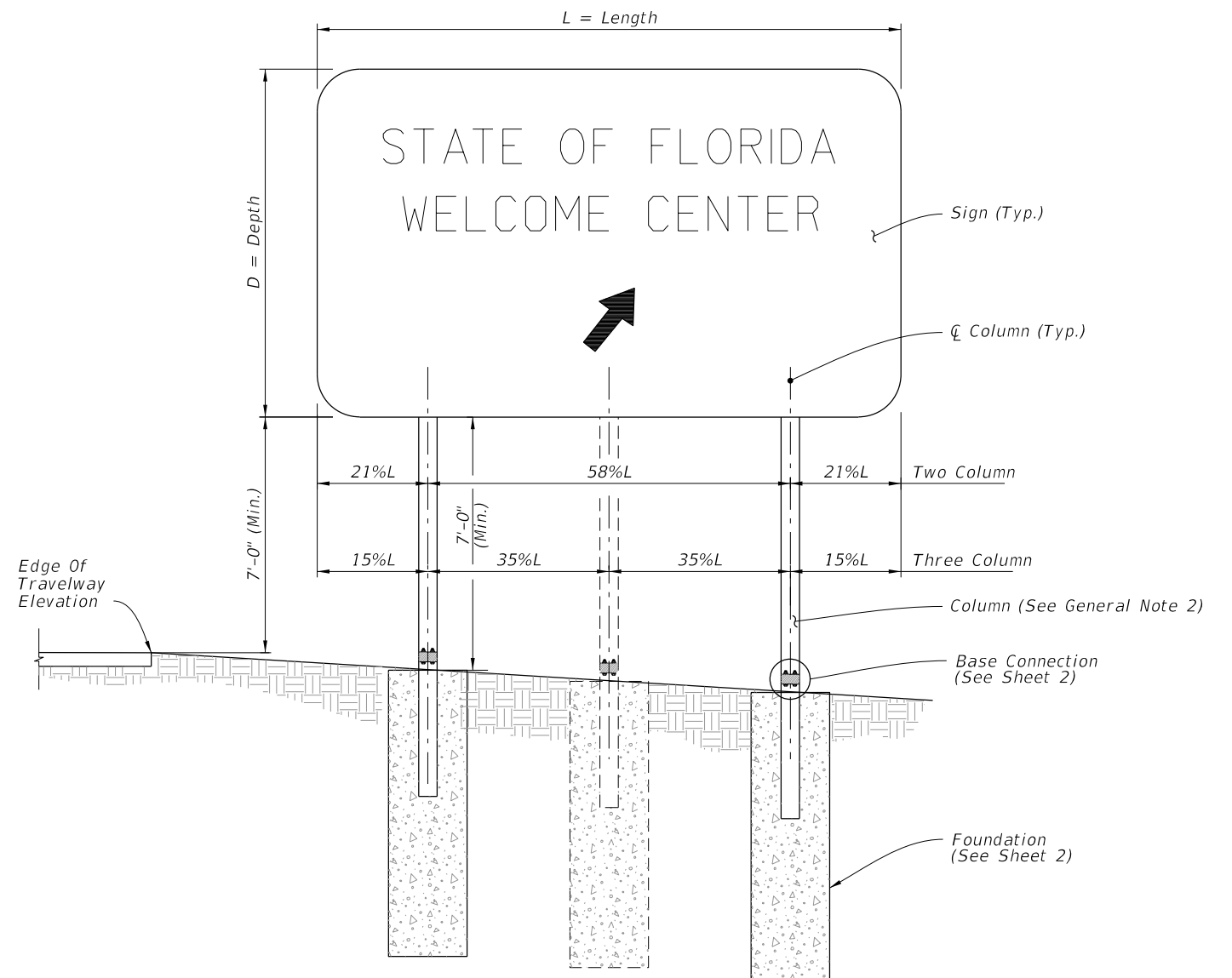
**GENERAL NOTES:**

1. Meet the requirements of Specification 700.
2. Verify Column lengths in the field prior to fabrication.
3. Shop drawings:
  - A. Sign Support Shop drawings are not required when fabricated in accordance with this Index and support columns do not exceed the length shown in the plans by more than 2'-0".
  - B. Sign Panels: Horizontal panel splices are allowed at interior wind beams for sign panels with a depth ("D") greater than 10 feet. Shop drawings required for horizontal panel splice details.
  - C. When shop drawings are required, obtain approval prior to fabrication.

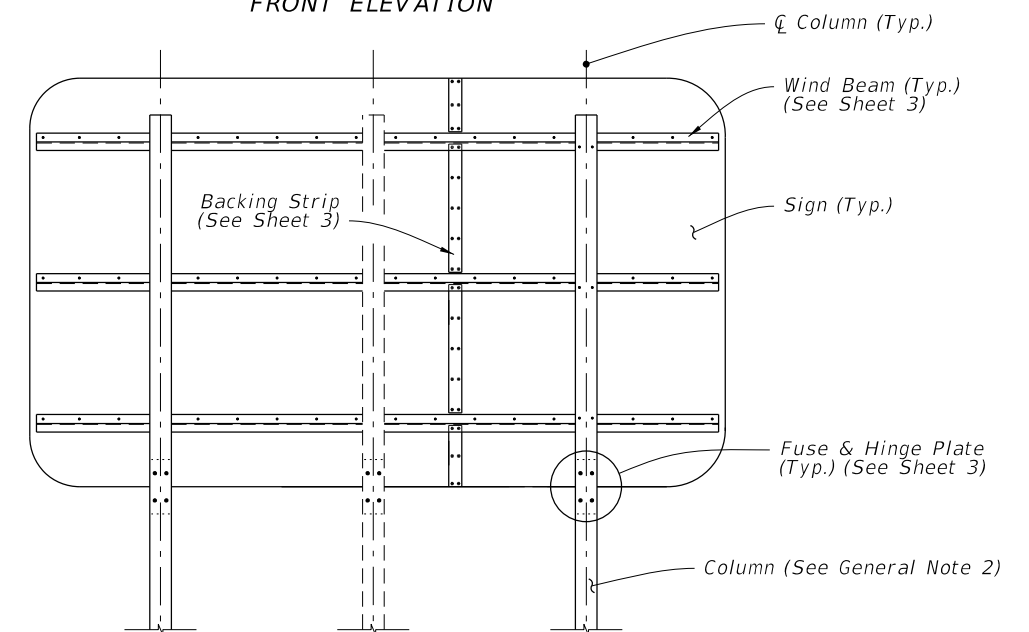
**4. Materials:**

- A. Sign Panel Mounting Materials:
  - a. Aluminum Bars, and Extruded Shapes: ASTM B221, Alloy 6061-T6 or Alloy 6351-T5
  - b. Aluminum Structural Shapes: ASTM B221, Alloy 6061-T6
- B. Sign Support Structure Materials:
  - a. Steel Plates and Structural Shapes: ASTM A36 or ASTM A709, Grade 36
  - b. Steel Weld Metal: E70XX
  - c. Shims: Brass ASTM B36 or Galvanized Steel
- C. Aluminum Bolts, Nuts and Washers:
  - a. Flat Head and Button Head Bolts: ASTM F 468, Alloy 2024-T4
  - b. Hex Nuts: ASTM F467, 2024-T4
  - c. Washers: ASTM B221, Alloy 2024-T4
- D. Stainless Steel Bolts, Nuts and Washers Alloy Group 2, Condition A, may be substituted for the Aluminum bolts as follows:
  - a. Bolts: ASTM F593, CW1 or SH1
  - b. Nuts: ASTM F594,
- E. High Strength (H.S.) Steel Bolts, Nuts and Washers:
  - a. Galvanized Hex Head Bolts: ASTM F3125, Grade A325, Type 1
  - b. Galvanized Nuts: ASTM A563 Hex, Grade DH
  - c. Galvanized Washers: ASTM F436
- F. Concrete: Class II.

CLARIFIED NOTES




FRONT ELEVATION

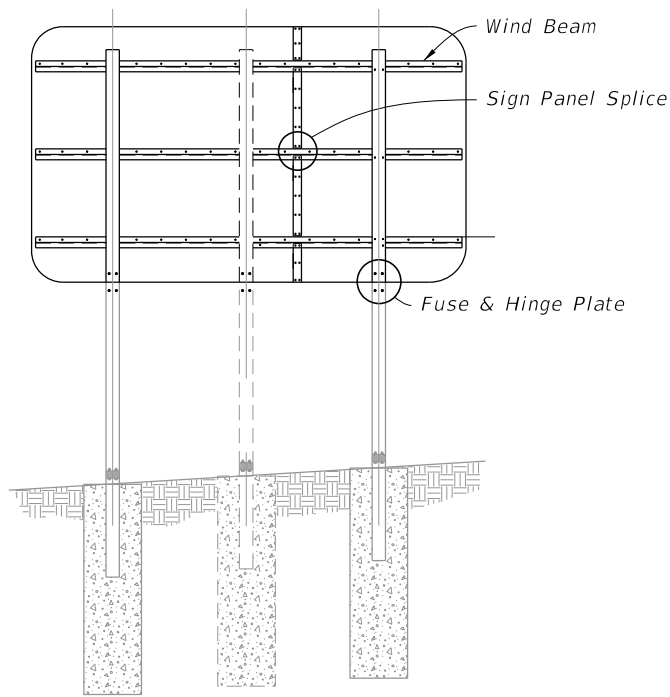


BACK ELEVATION

MULTI-COLUMN SIGN ASSEMBLY

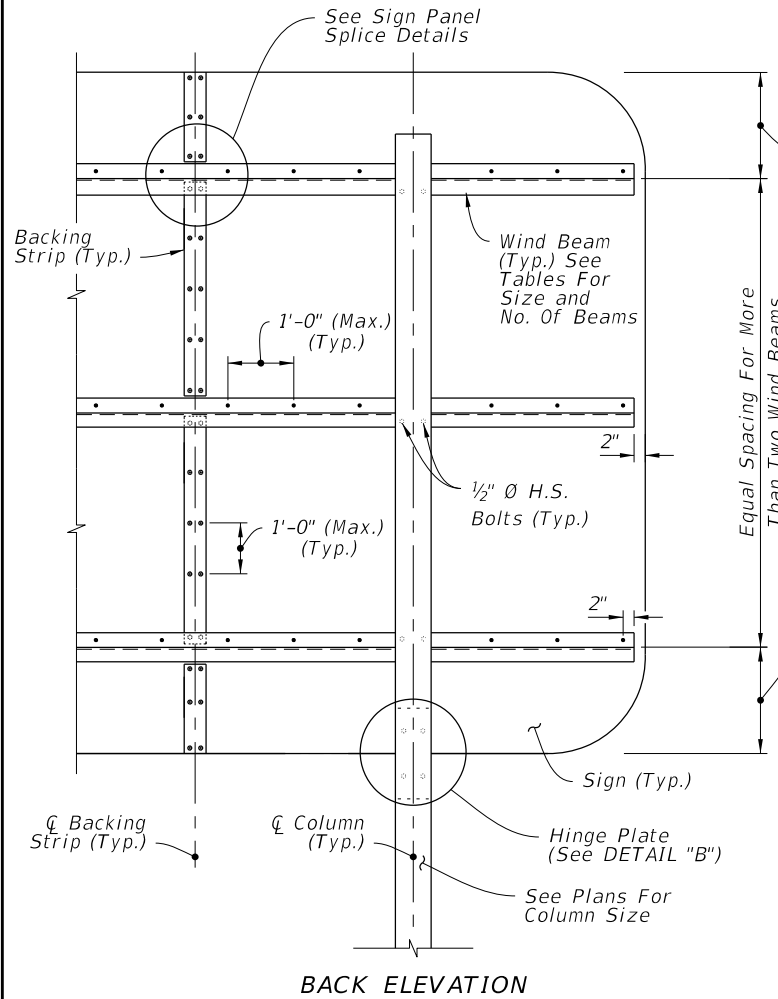
10/13/2022 9:26:07 AM

LAST REVISION 11/01/22	REVISION	DESCRIPTION:	 FY 2023-24 STANDARD PLANS	MULTI-COLUMN GROUND SIGN	INDEX 700-020	SHEET 1 of 3
---------------------------	----------	--------------	---	--------------------------	------------------	-----------------



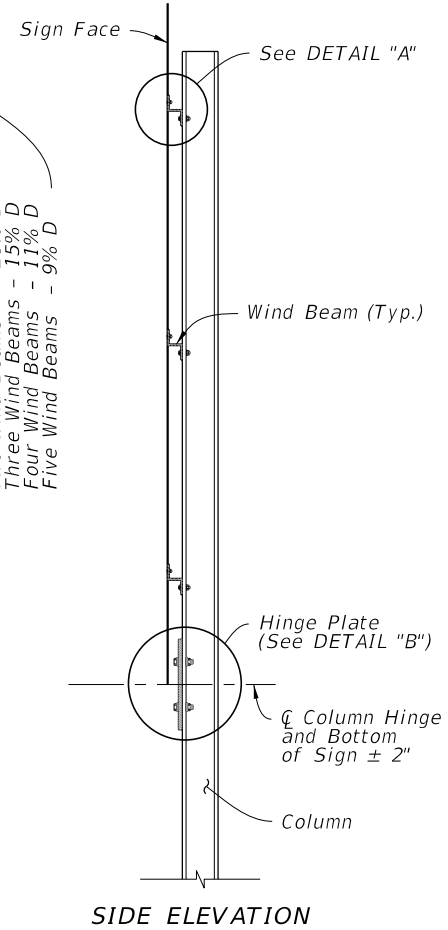
BACK ELEVATION

MULTI-COLUMN SIGN ASSEMBLY

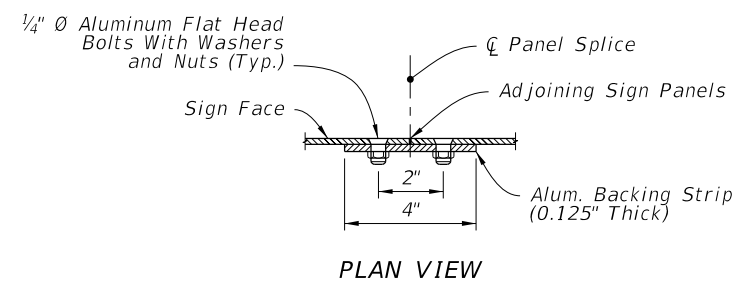


BACK ELEVATION

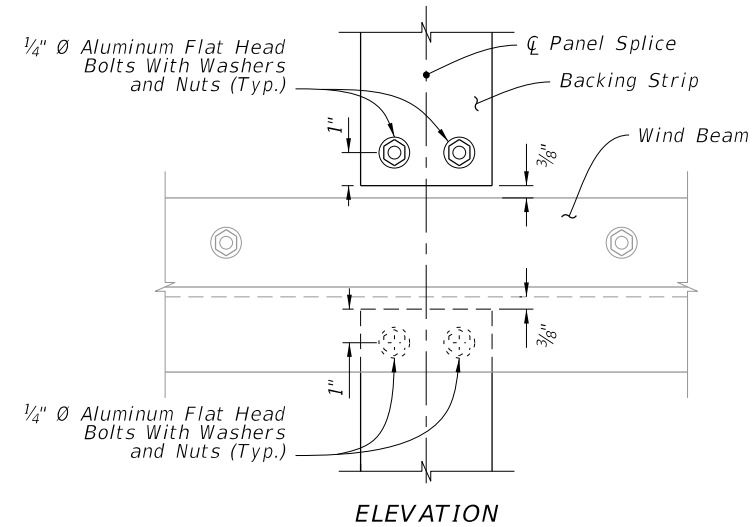
MULTI-COLUMN SIGN BACK PANEL



SIDE ELEVATION



PLAN VIEW



ELEVATION

SIGN PANEL SPLICE

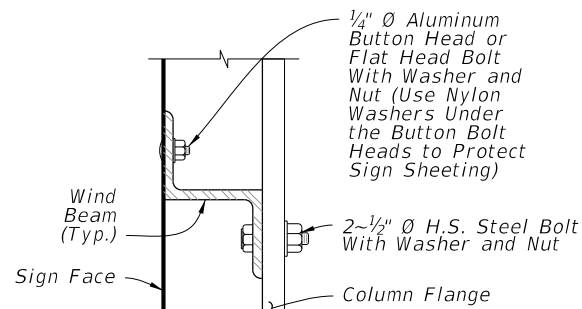
NUMBER OF WIND BEAMS BASED ON SIGN DEPTH (D)

2 Beams	3 Beams	4 Beams	5 Beams
$D \leq 8'$	$8' < D \leq 12'$	$12' < D \leq 16'$	$16' < D \leq 20'$

WIND BEAM SIZE BASED ON SIGN LENGTH (L)

2 Columns	3 Columns	Aluminum Beam Size **
$L \leq 12'$	$L \leq 18'$	Z 1-3/4 x 1-3/4 x 1.09
$12' < L \leq 20'$	$18' < L \leq 30'$	Z 3 x 2-1/16 x 2.33
$20' < L \leq 25'$	$30' < L \leq 39'$	Z 4-1/16 x 3-1/8 x 3.57

\*\*Designation gives (Member Depth in inches) x (Flange Width in inches) x (lb/ft)

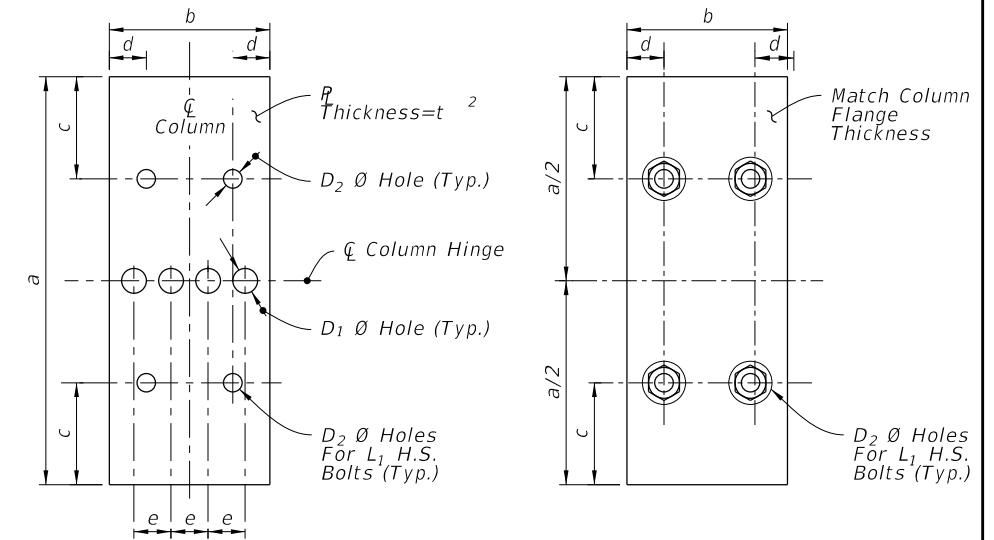


DETAIL "A"

FUSE (HINGE) PLATE DATA

Steel Section*	a	b	c	d	e	t <sub>2</sub>	D <sub>1</sub>	D <sub>2</sub>	L <sub>1</sub>
S 3x5.7	7-1/4"	2-3/8"	1-1/4"	1/2"	9/16"	3/8"	7/16"	9/16"	1/2"
W 6x12	7-1/4"	4"	1-1/4"	7/8"	15/16"	3/8"	13/16"	11/16"	5/8"
W 8x18	8-1/4"	5-1/4"	1-3/8"	1-1/8"	1-1/4"	3/8"	1"	13/16"	3/4"
W 8x24	8-1/4"	6-1/2"	1-3/8"	1-1/2"	1-1/2"	1/2"	1"	13/16"	3/4"
W 10x33	9-1/4"	8"	2"	1-3/4"	1-3/4"	5/8"	1-1/8"	1-1/16"	1"
W 12x45	11"	8"	2"	1-3/4"	1-3/4"	3/4"	1-5/16"	1-1/16"	1"

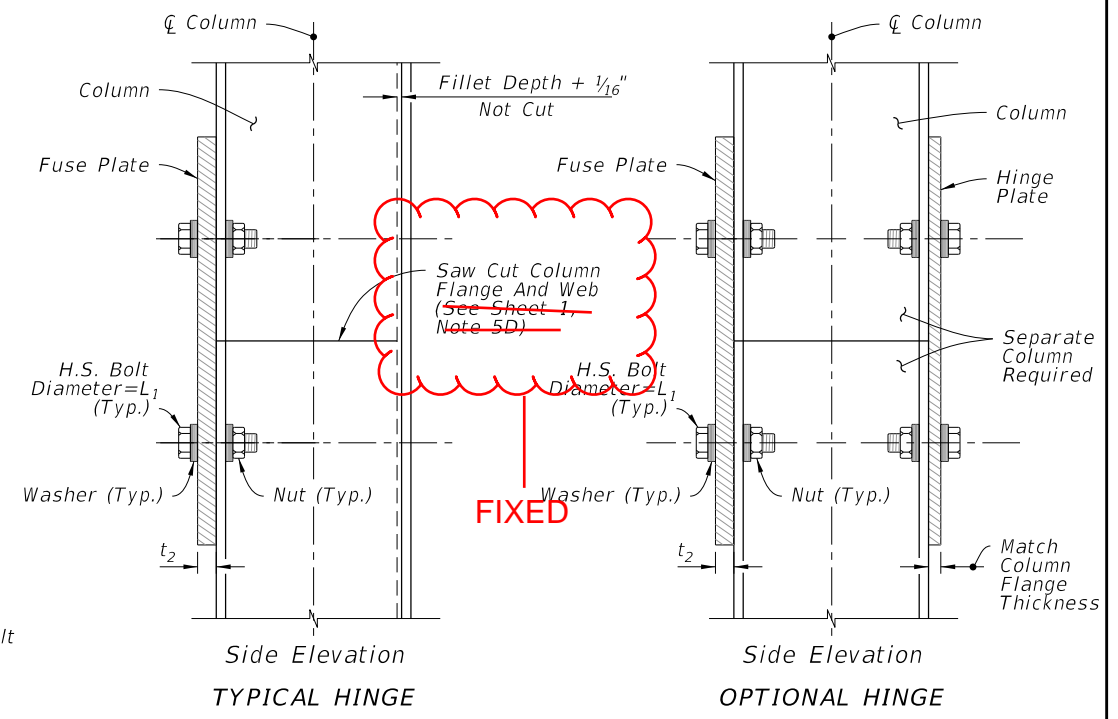
\* Designations: (Nominal Depth in inches) x (Weight in Pounds Per Linear Foot)



FUSE PLATE

HINGE PLATE

FUSE & HINGE PLATE



Side Elevation  
TYPICAL HINGE

Side Elevation  
OPTIONAL HINGE

FIXED

WIND BEAM, BACKING STRIP & FUSE/HINGE PLATE DETAILS

10/6/2022 2:36:29 PM

LAST REVISION	DESCRIPTION:
11/01/22	