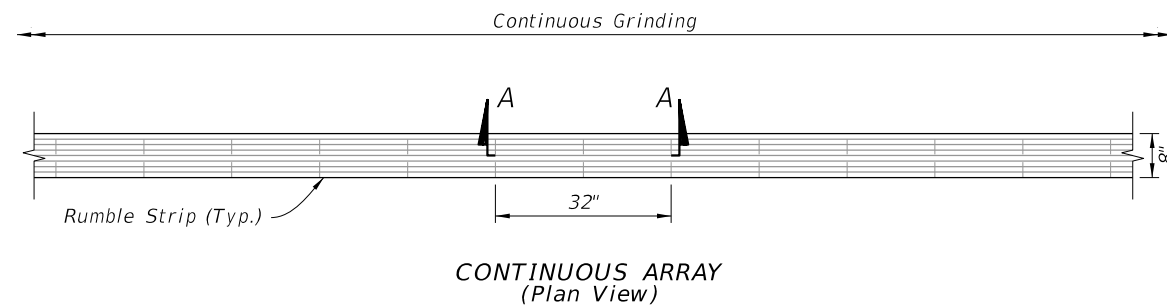
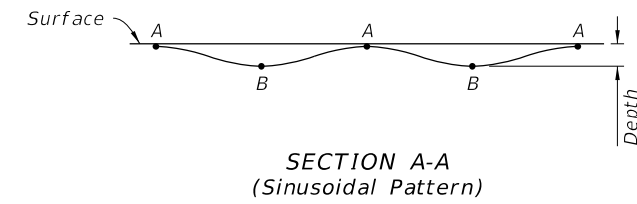


SKIP ARRAY  
(Plan View)



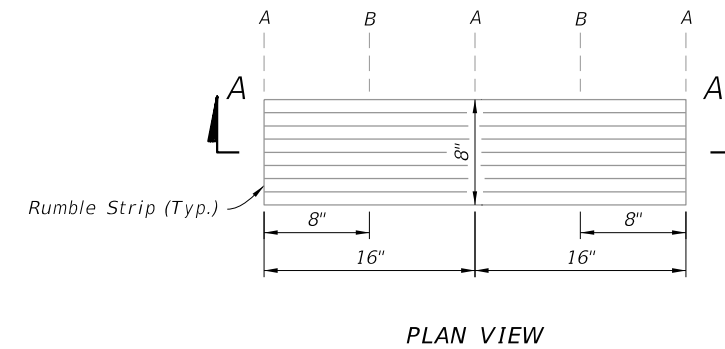
CONTINUOUS ARRAY  
(Plan View)

LOCATION	DEPTH FROM SURFACE (IN.)
A	$\frac{1}{16}$
B	$\frac{9}{16}$



SECTION A-A  
(Sinusoidal Pattern)

Rumble Strip Placement	Array
Outside Shoulder with Buffered Bike Lane	Skip
Outside Paved Shoulder Width Greater than or Equal to 5'-0"	Skip
Outside Paved Shoulder Width Greater than 0'-0" and Less Than 5'-0"	Skip
Outside Paved Shoulder Equal to 0'-0"	Skip
Inside Paved Shoulder Width Greater Than or Equal to 1'-0"	Continuos
Inside Paved Shoulder Width Greater Than 0'-0" and Less Than 1'-0"	Skip
One - Direction Passing Centerline	Continuos
Two - Direction Passing Centerline	Continuos
Two - Direction No-Passing Centerline	Continuos



PLAN VIEW

RUMBLE STRIP ARRAY DETAILS

RUMBLE STRIP DETAILS

GENERAL NOTES:

1. Straightness tolerance of ground-in rumble strips in the roadway longitudinal direction is plus or minus 1/2".
2. At intersections and major driveways:
  - A. Terminate outside shoulder rumble strips at the radius return.
  - B. Terminate median shoulder rumble strips at the radial return of median nose.
  - C. Terminate centerline rumble strips on undivided highways at the termination of centerline striping.
  - D. Terminate rumble strips at auxiliary lane tapers.

3. For Centerlines in passing zones, provide 2 foot gaps in the continuous array spaced at 40 feet and centered on RPM locations.

Added Note 3 and Reference to Table 1

10/6/2022 2:25:29 PM