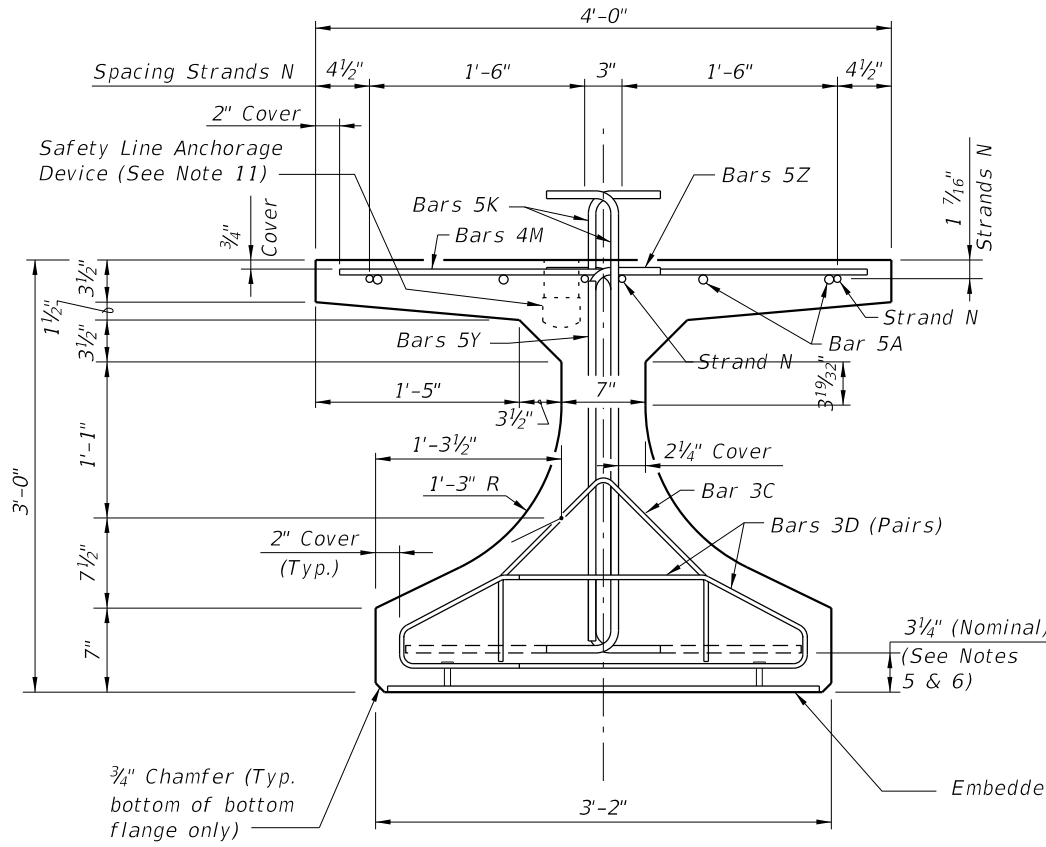
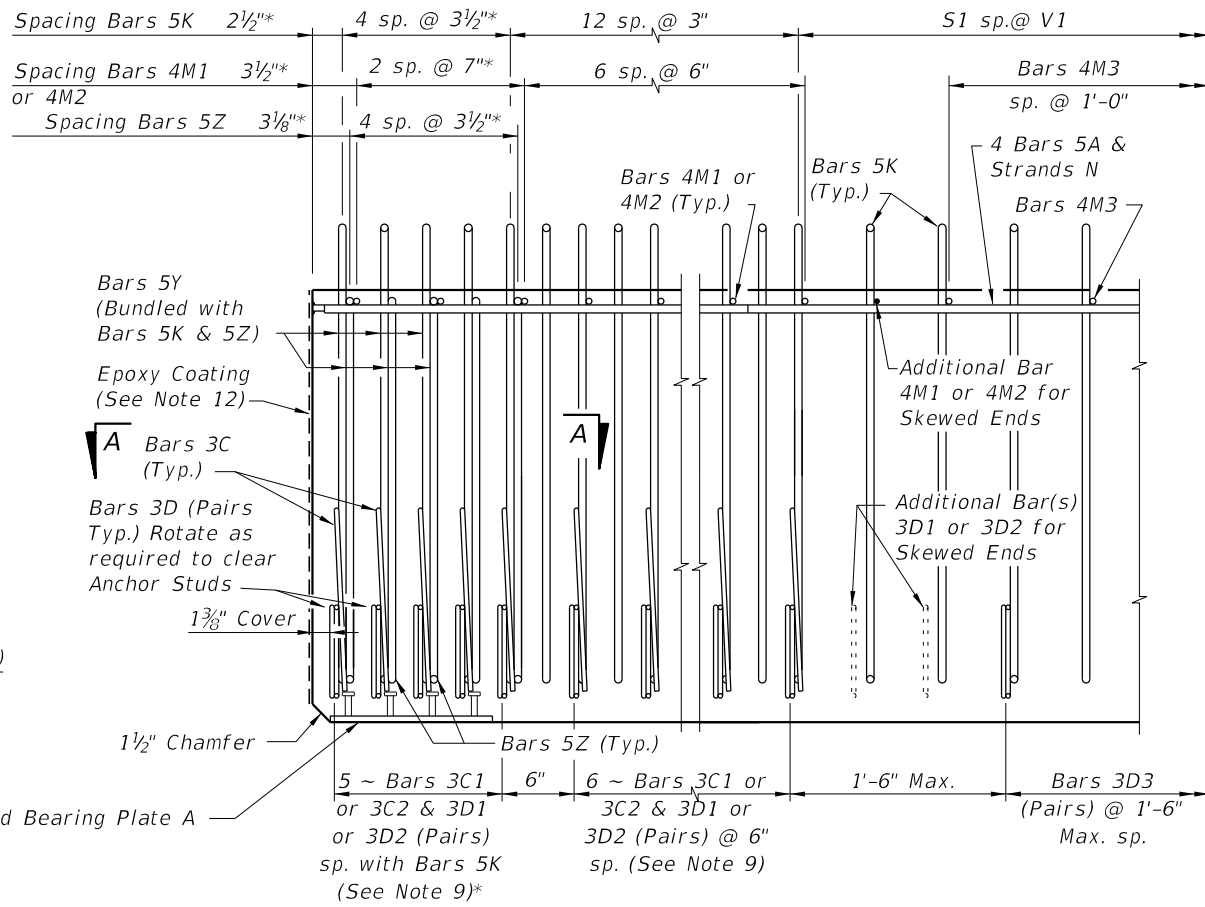


\* These dimensions are measured perpendicular to the end of beam



END VIEW

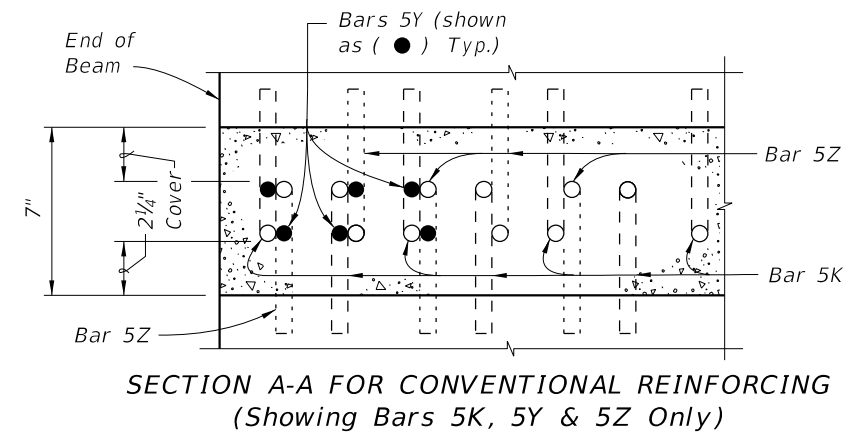
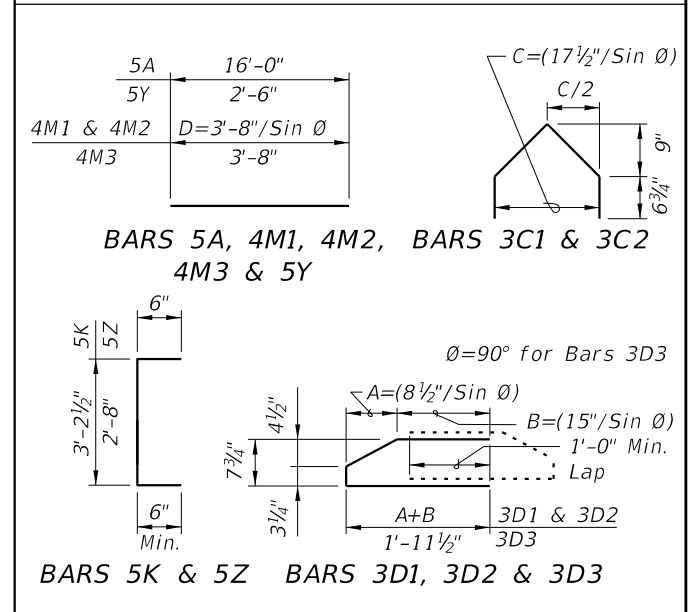


ELEVATION AT END OF BEAM  
(Flanges Not Shown For Clarity)  
(End 1 Shown, End 2 Similar)

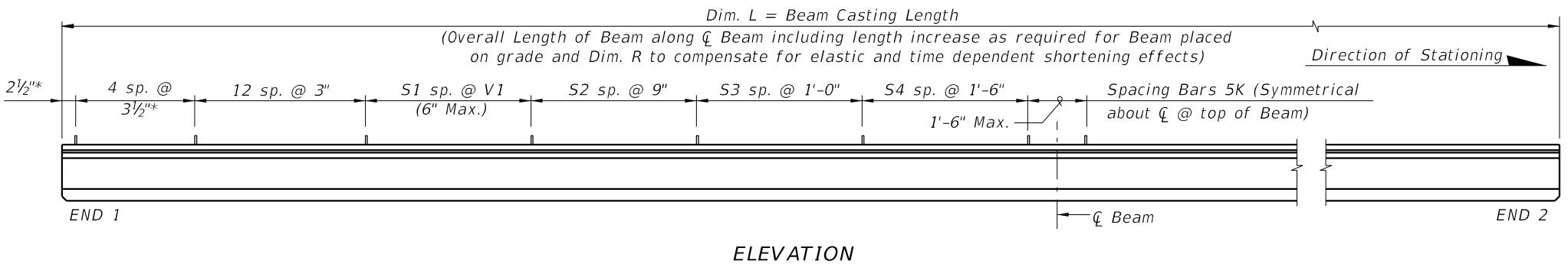
CONVENTIONAL REINFORCING  
BAR BENDING DETAILS

| BILL OF REINFORCING STEEL |                 |               |                 |                 |
|---------------------------|-----------------|---------------|-----------------|-----------------|
| MARK                      | NOTE NUMBERS    | SIZE          | NUMBER REQUIRED | LENGTH (NOTE 2) |
| A                         | —               | 5             | 8               | 16'-0"          |
| C1                        | 7, 8 & 9        | 3             | 11 (End 1)      | Varies          |
| C2                        | 7, 8 & 9        | 3             | 11 (End 2)      | Varies          |
| D1                        | 7, 8, 9 & 10    | 3             | 22 (End 1)      | Varies          |
| D2                        | 7, 8, 9 & 10    | 3             | 22 (End 2)      | Varies          |
| D3                        | 9 & 10          | 3             | See Table       | 4'-3"           |
| K                         | 5, 6, 8, 9 & 10 | 5             | See Table       | 4'-2"           |
| M1                        | 7 & 9           | 4             | 9 (End 1)       | Varies          |
| M2                        | 7 & 9           | 4             | 9 (End 2)       | Varies          |
| M3                        | 9               | 4             | See Table       | 3'-8"           |
| N                         | 4 & 12          | 3/8" Ø Strand | 4               | Dim. L          |
| Y                         | 8 & 9           | 5             | 12              | 2'-6"           |
| Z                         | 5, 6, 8, 9 & 10 | 5             | 10              | 3'-8"           |

BENDING DIAGRAMS (See Note 2)



SECTION A-A FOR CONVENTIONAL REINFORCING  
(Showing Bars 5K, 5Y & 5Z Only)



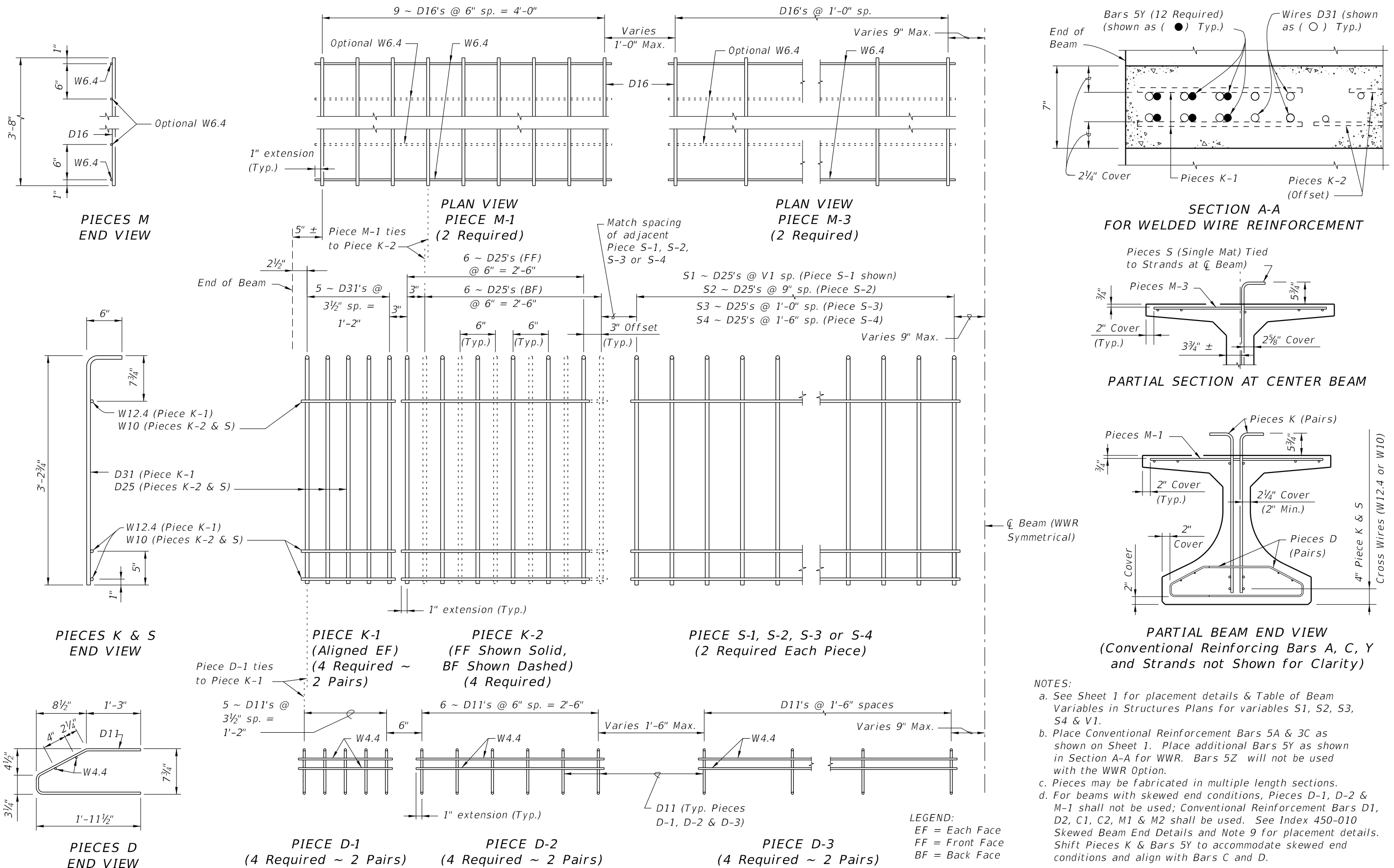
ELEVATION

- NOTES:
- A. Work this Index with Index 450-010 - Typical Florida-I Beam Details and Notes and the Florida-I Beam - Table of Beam Variables in Structures Plans.
  - B. For referenced notes, see Index 450-010.
  - C. For Dimensions A, B, C, D, L, R & V1 and number of spaces S1 thru S4, see Florida-I Beam - Table of Beam Variables in Structures Plans.

9/23/2021 8:09:28 AM

| LAST REVISION | DESCRIPTION: |
|---------------|--------------|
| 11/01/19      |              |

ALTERNATE REINFORCING STEEL (WWR) DETAILS



9/23/2021 8:09:32 AM

|                           |              |                                  |                                      |                  |                 |
|---------------------------|--------------|----------------------------------|--------------------------------------|------------------|-----------------|
| LAST REVISION<br>11/01/16 | DESCRIPTION: | <br>FY 2022-23<br>STANDARD PLANS | FLORIDA-I 36 BEAM - STANDARD DETAILS | INDEX<br>450-036 | SHEET<br>2 of 2 |
|---------------------------|--------------|----------------------------------|--------------------------------------|------------------|-----------------|