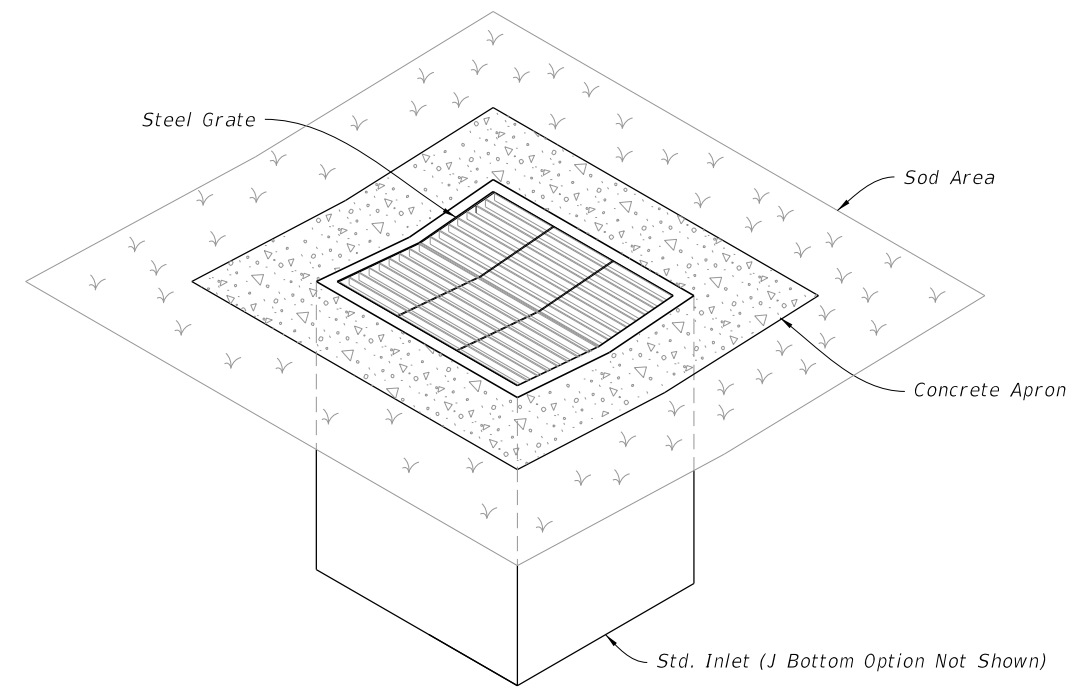


GENERAL NOTES:

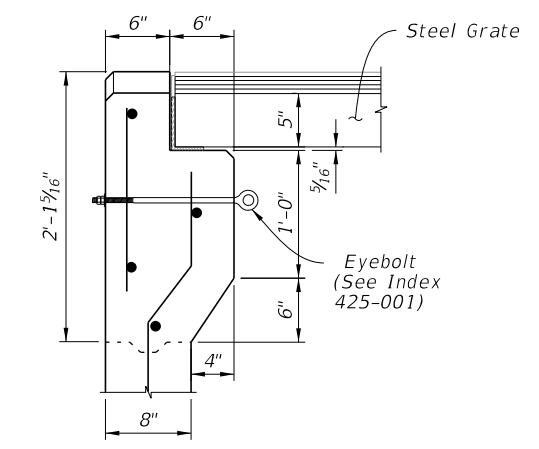
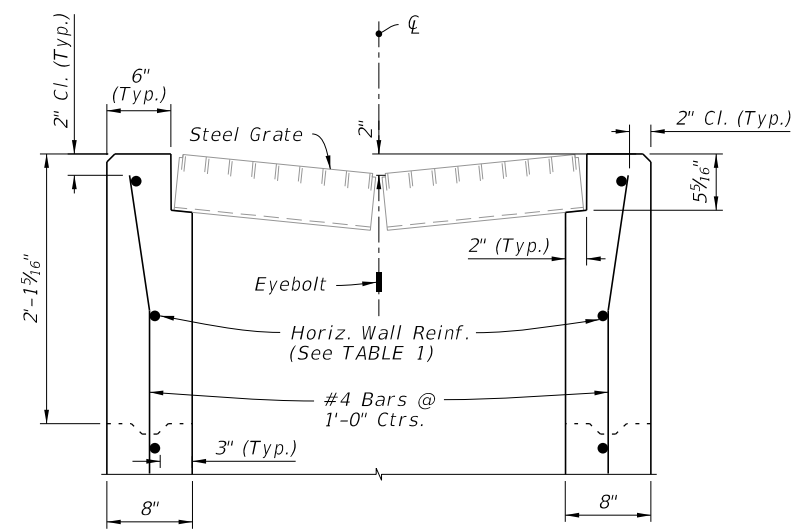
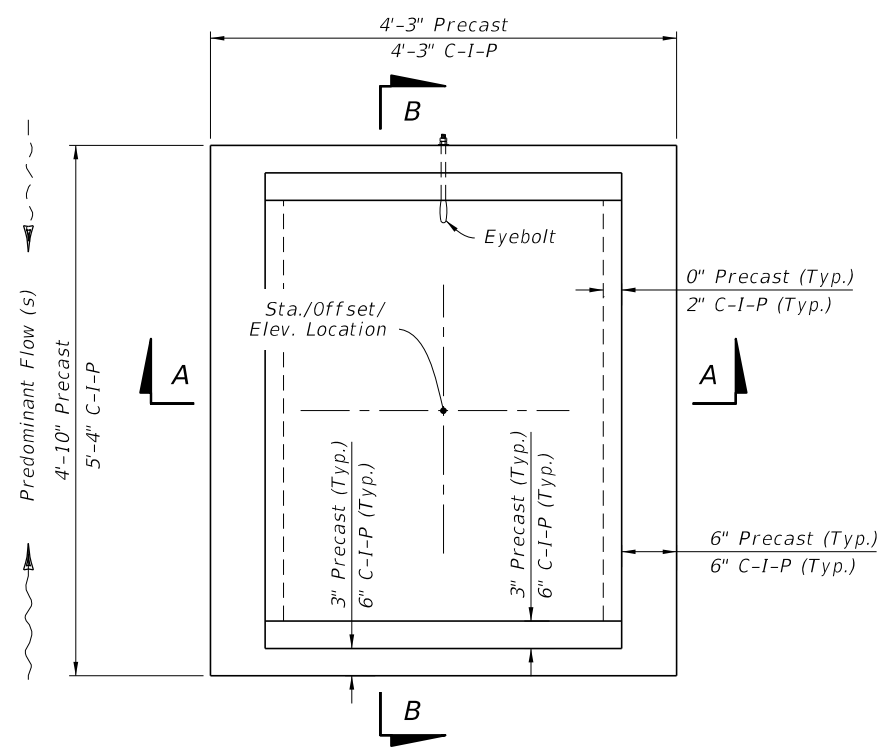
1. Work this Index with Index 425-001 and Index 425-010.
2. Reinforcing bars are Grade 60 bars with 2" minimum cover unless otherwise noted. See Index 425-001 for equivalent area of welded wire fabric. Cut or bend bars out of way of pipe when necessary; bars to clear pipe by 1½".
3. Chamfer all exposed edges and corners ¾" or tooled to ¼" radius.
4. Dimensions are for both precast and cast-in-place inlets unless otherwise noted.
5. Quantities are for informational and estimating purposes only.

| TABLE OF CONTENTS: | |
|--------------------|---|
| Sheet | Description |
| 1 | General Notes and Contents |
| 2 | Dimensional and Reinforcing Details |
| 3 | Grate, Concrete Apron, and Sodded Area Details |
| 4 | Alternate A Structure Bottom - Top Slab Details |



===== DITCH BOTTOM INLET TYPE J =====
 (Pipe Connection Not Shown)

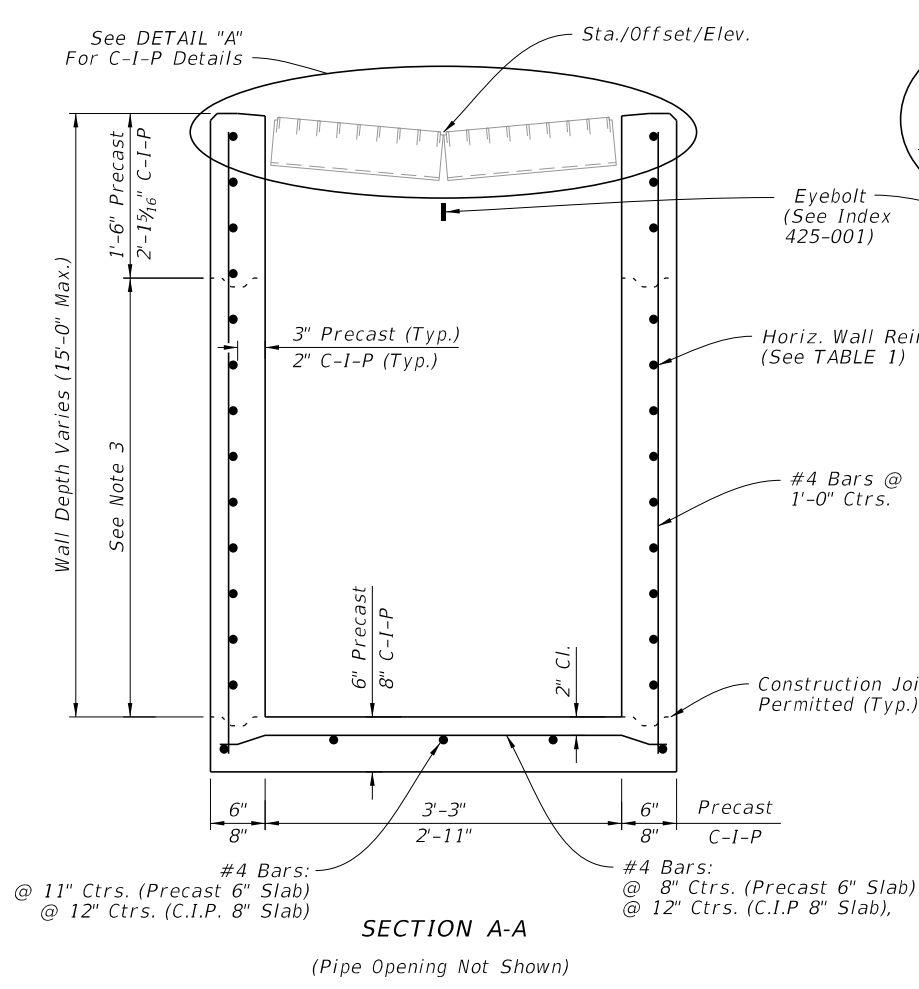
9/21/2021 1:24:24 PM



DETAIL "A"

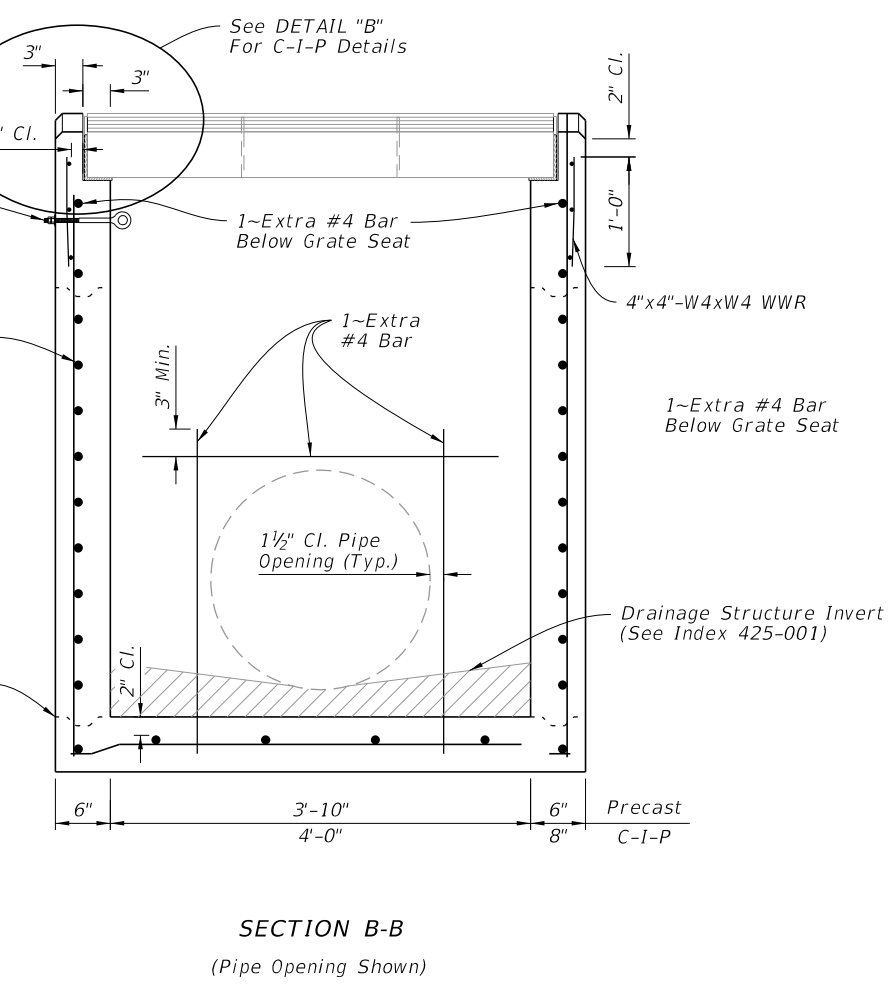
DETAIL "B"

CAST-IN-PLACE OPTION



SECTION A-A

(Pipe Opening Not Shown)



SECTION B-B

(Pipe Opening Shown)

DIMENSIONAL AND REINFORCING DETAILS

TABLE 1
HORIZONTAL WALL REINFORCING SCHEDULE

| WALL DEPTH | SCHEDULE | AREA (in. ² /ft.) | MAX. SPACING | |
|------------|----------|------------------------------|--------------|-----|
| | | | BARS | WWR |
| 0' - 4' | A12 | 0.20 | 12" | 8" |
| 4' - 9' | A6 | 0.20 | 6" | 5" |
| 9' - 12' | A4 | 0.24 | 4" | 3" |
| 9' - 15' | B5.5 | 0.24 | 5 1/2" | 5" |

NOTES:

1. Grate, Concrete Apron, and Sod not shown in Plan View.
2. See Sheet 3 for Concrete Apron and Sodded Area details.
3. Construction joints permitted between these limits. See Index 425-001 for minimum dimensions.

DIMENSIONAL AND REINFORCING DETAILS

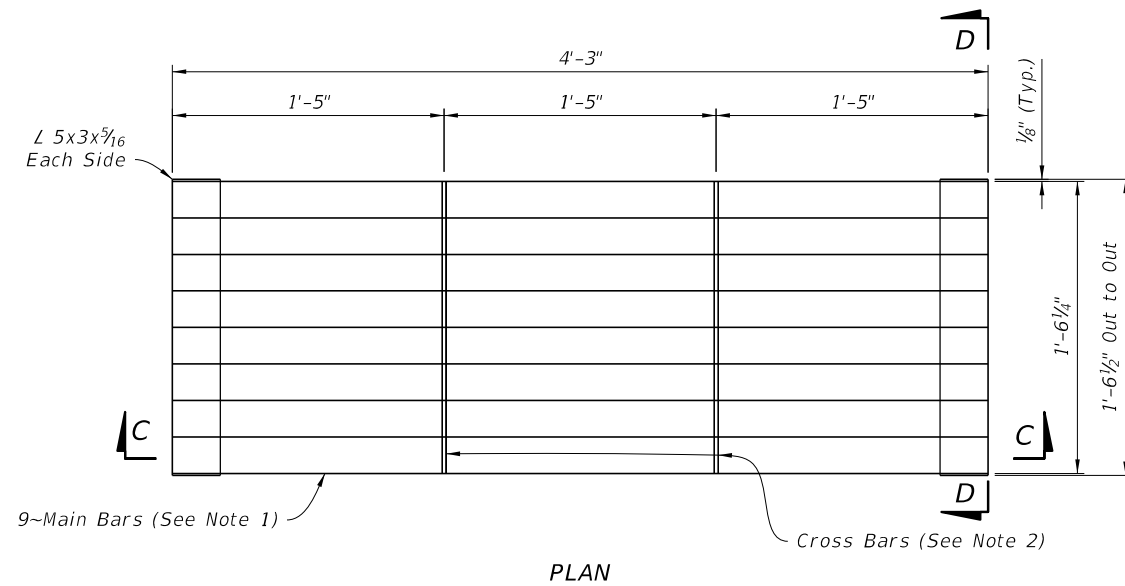
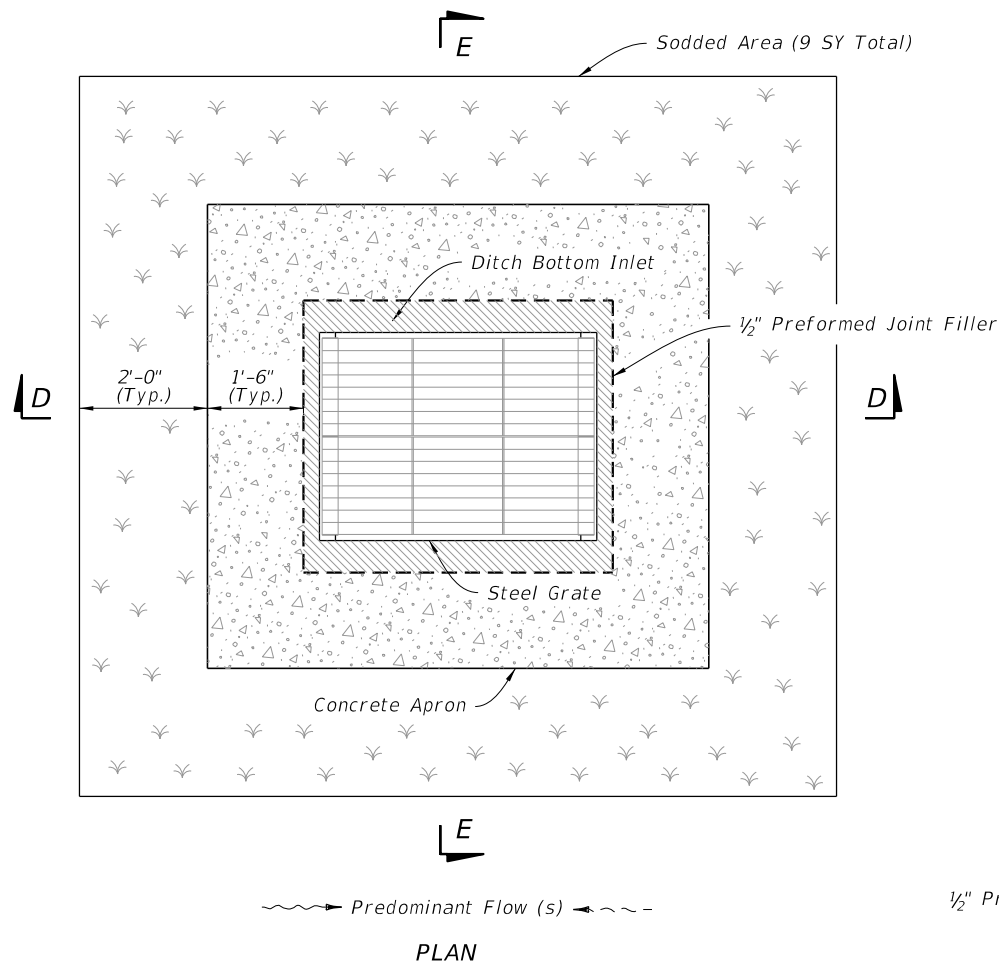
9/21/2021 1:24:25 PM

| | |
|---------------------------|--------------|
| LAST REVISION 11/01/20 | DESCRIPTION: |
|---------------------------|--------------|

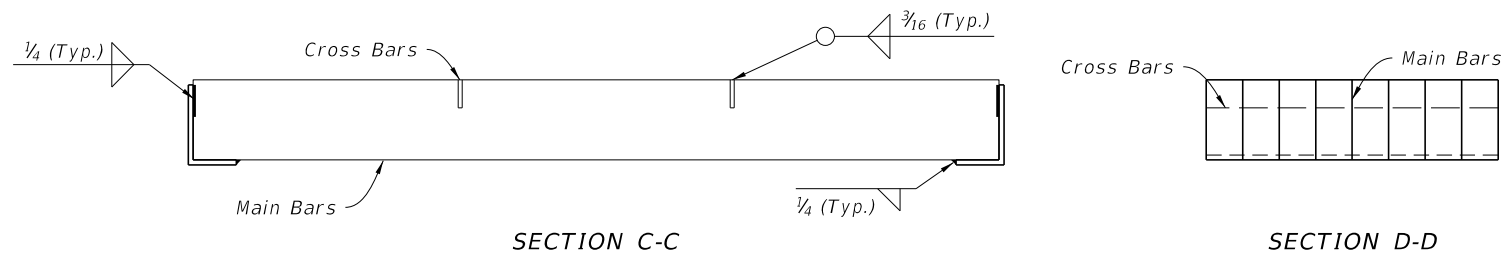

**FY 2022-23
STANDARD PLANS**

DITCH BOTTOM INLET TYPE J

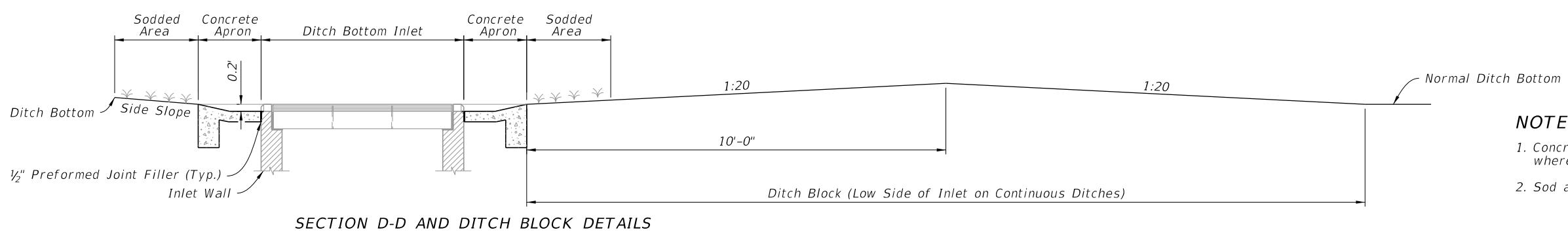
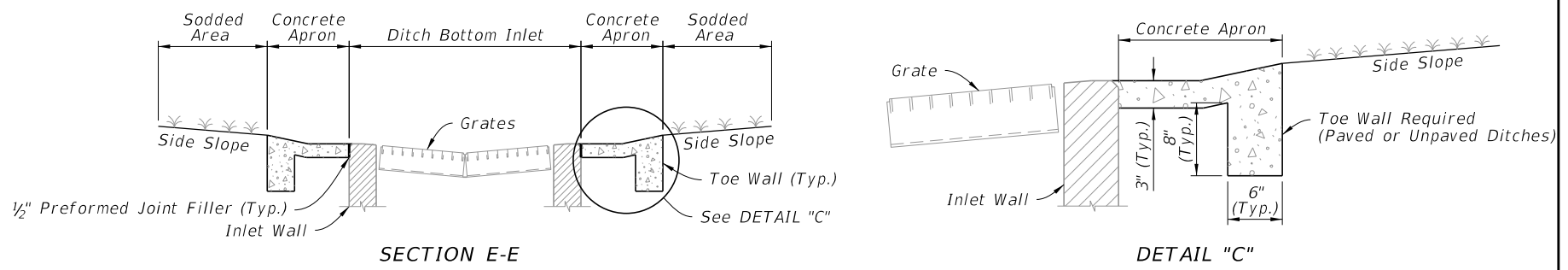
| | |
|------------------|-----------------|
| INDEX 425-054 | SHEET 2 of 4 |
|------------------|-----------------|



- NOTES:**
1. Main Bars are 5"x1/4" and are notched for Cross Bars.
 2. Cross Bars are 1 3/4"x1/4" and continuously welded at Main Bar Notches.
 3. Main Bars and Cross Bars are flush on top.



STEEL GRATE DETAIL



- NOTES:**
1. Concrete Apron to be installed only where called for in the Plans.
 2. Sod always required.

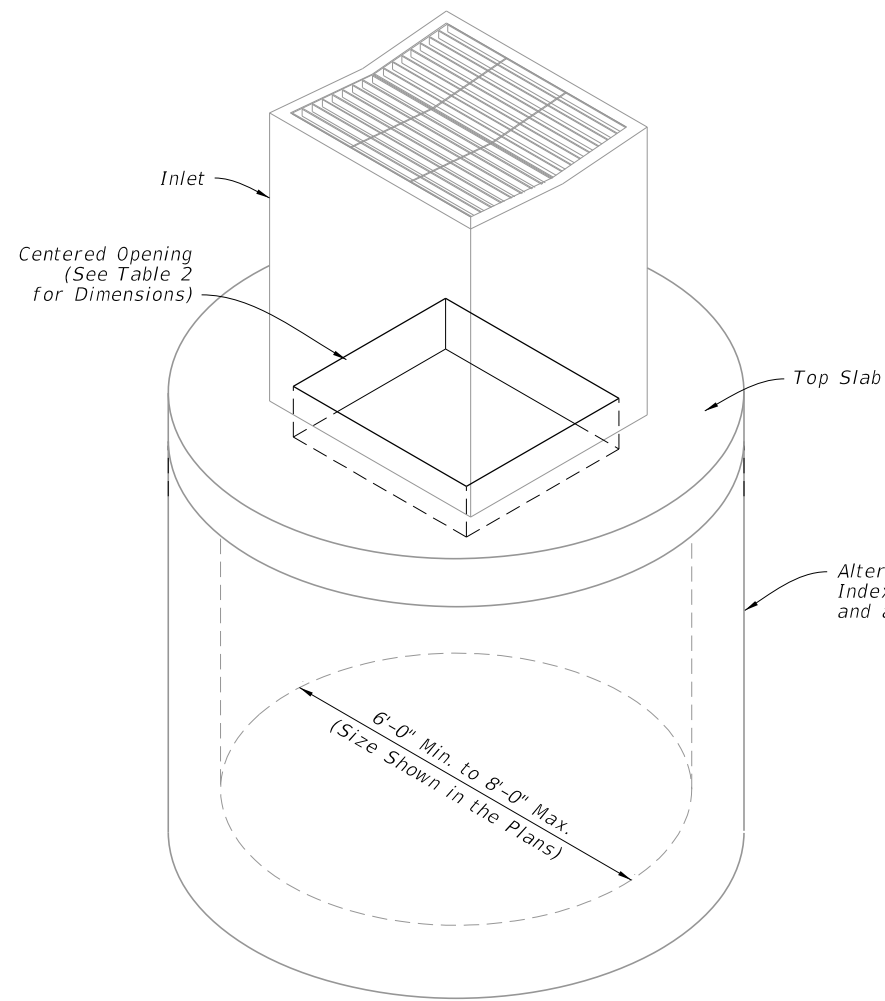
CONCRETE APRON AND SODDED AREA DETAILS

GRATE, CONCRETE APRON, AND SODDED AREA DETAILS

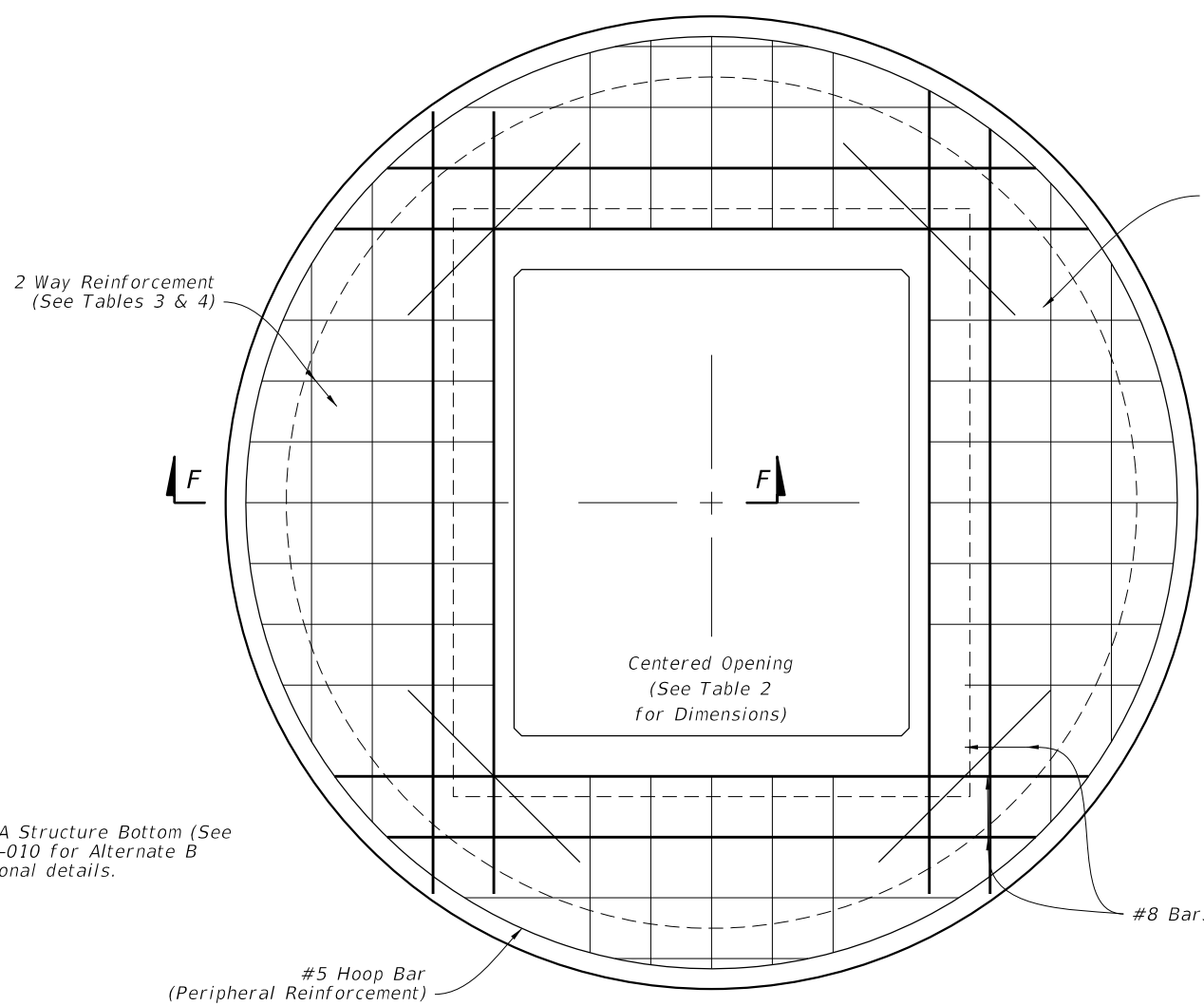
9/21/2021 1:24:26 PM

| | | | | | | | |
|---------------------------|----------|--------------|--|------------------------------|---------------------------|------------------|-----------------|
| LAST REVISION 11/01/20 | REVISION | DESCRIPTION: | | FY 2022-23 STANDARD PLANS | DITCH BOTTOM INLET TYPE J | INDEX 425-054 | SHEET 3 of 4 |
|---------------------------|----------|--------------|--|------------------------------|---------------------------|------------------|-----------------|

9/21/2021 1:24:27 PM

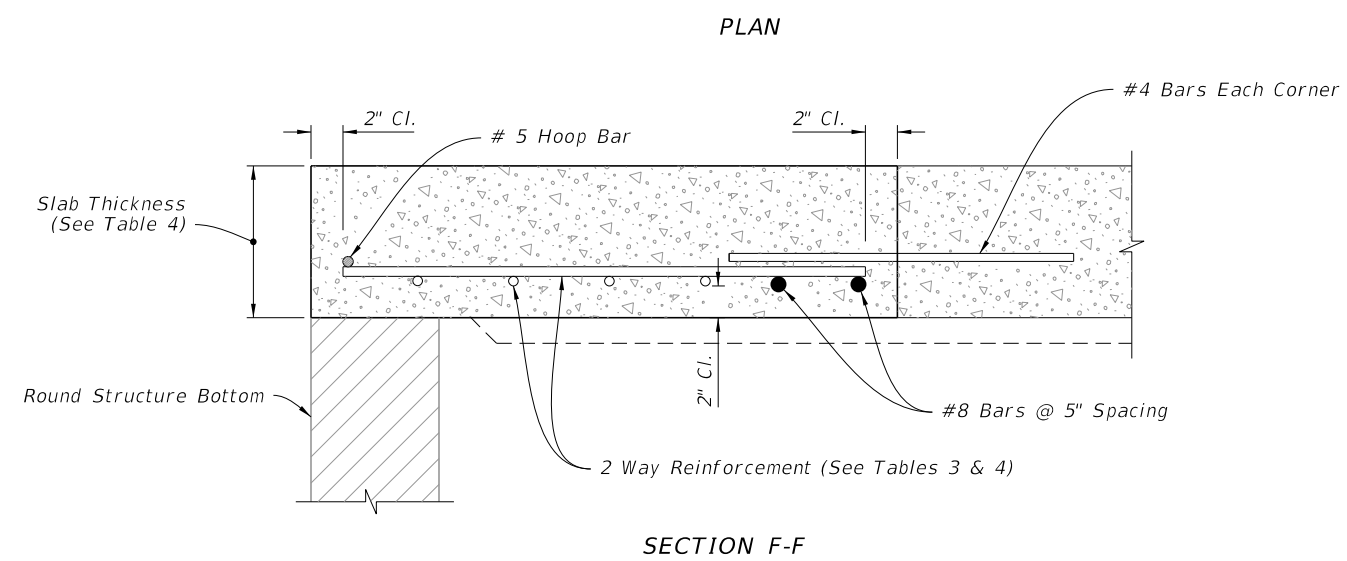


| BOTTOM STRUCTURE DIAMETER | OPENING SIZE | |
|---------------------------------|---------------|----------------|
| | Min. | Max. |
| 6'-0" to 8'-0" | 3'-8" x 4'-2" | 3'-10" x 4'-2" |



| SCHEDULE | GRADE 60 (BAR) OR 65 KSI & 70 KSI (WIRE REINFORCING) In. ² /ft. |
|----------|---|
| A | 0.20 |
| B | 0.24 |
| C | 0.37 |
| D | 0.53 |
| E | 0.73 |
| F | 1.06 |
| G | 1.45 |

| STRUCTURE DEPTH | SLAB THICKNESS | REINFORCING (2 WAY) SCHEDULE |
|--------------------|-------------------|------------------------------------|
| SIZE: 6'-0" | | |
| 0.5' < 8' | 9 1/2" | B |
| 8' < 18' | 9 1/2" | C |
| 18' < 30' | 9 1/2" | D |
| 30' < 37' | 9 1/2" | E |
| 37' - 40' | 9 1/2" | G |
| SIZE: 8'-0" | | |
| ≥ 0.5' < 9' | 11 1/2" | C |
| 9' < 15' | 11 1/2" | D |
| 15' < 23' | 11 1/2" | E |
| 23' < 33' | 11 1/2" | E |
| 33' - 40' | 11 1/2" | G |



ISOMETRIC VIEW

TOP SLAB REINFORCEMENT DETAILS

ALTERNATE A STRUCTURE BOTTOM - TOP SLAB DETAILS

| LAST REVISION | DESCRIPTION: |
|------------------|--------------|
| 11/01/20 | |



FY 2022-23
STANDARD PLANS

DITCH BOTTOM INLET TYPE J

INDEX
425-054

SHEET
4 of 4