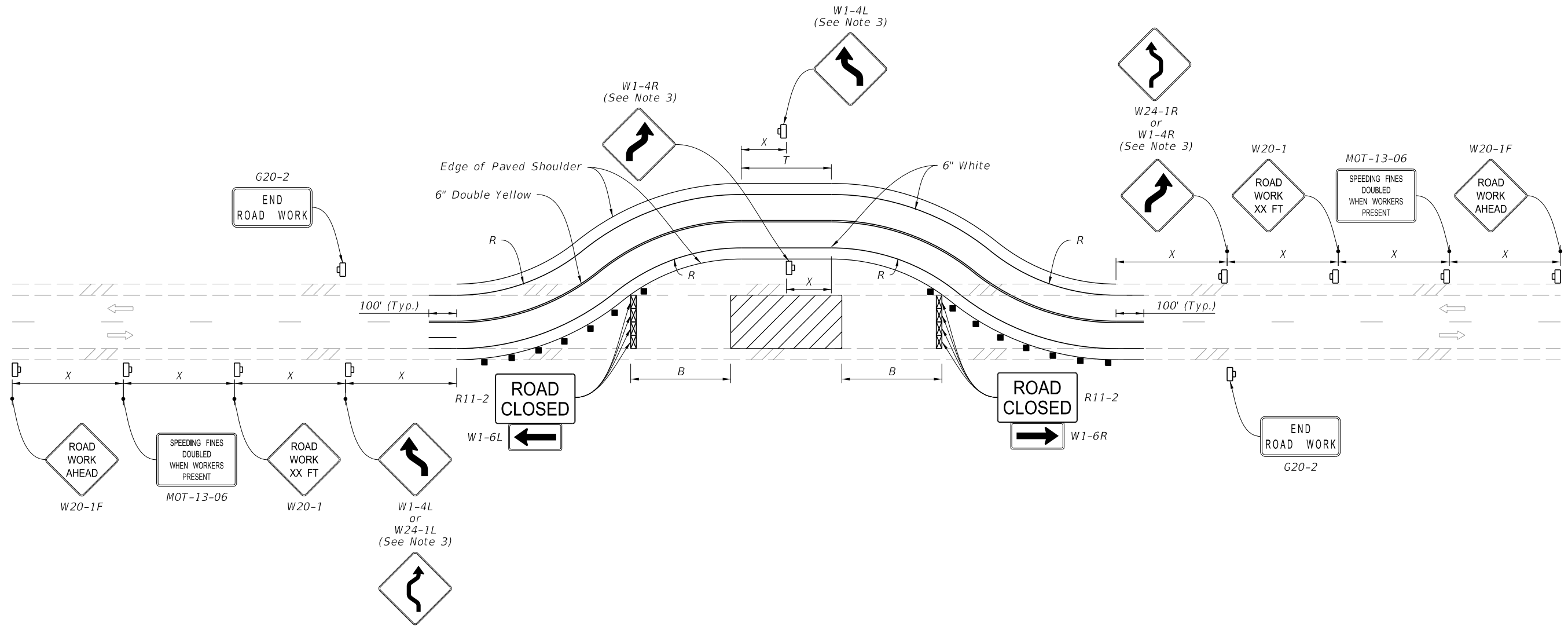
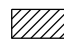
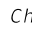





9/21/2021 12:21:28 PM



SYMBOLS:

-  Work Area
-  Channelizing Device (See Index 102-600)
-  Work Zone Sign
-  Type III Barricade
-  Lane Identification and Direction of Traffic

NOTES:

1. This Index applies to Two-Lane, Two-Way Roadways with temporary diversions.
2. B = Buffer Length
 X = Work Zone Sign Distance
 R = Radius of Curve
 See Index 102-600 for "B", "X", and channelizing device spacing values.
 See Plans for "R" values.
3. If the tangent distance "T" is less than 600', for each direction use a "Double Reverse Curve" sign (W24-1) instead of the first "Reverse Curve" sign (W1-4) and omit the second "Reverse Curve" sign.

LAST REVISION
11/01/20

REVISION DESCRIPTION:



FY 2022-23
STANDARD PLANS

TWO-LANE, TWO-WAY
TEMPORARY DIVERSION CONNECTION

INDEX
102-608

SHEET
1 of 1