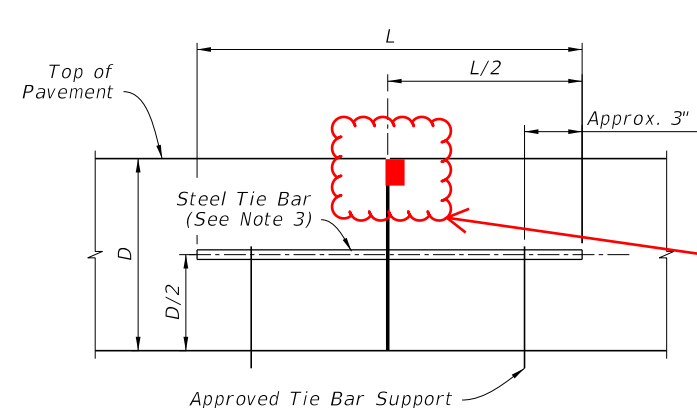
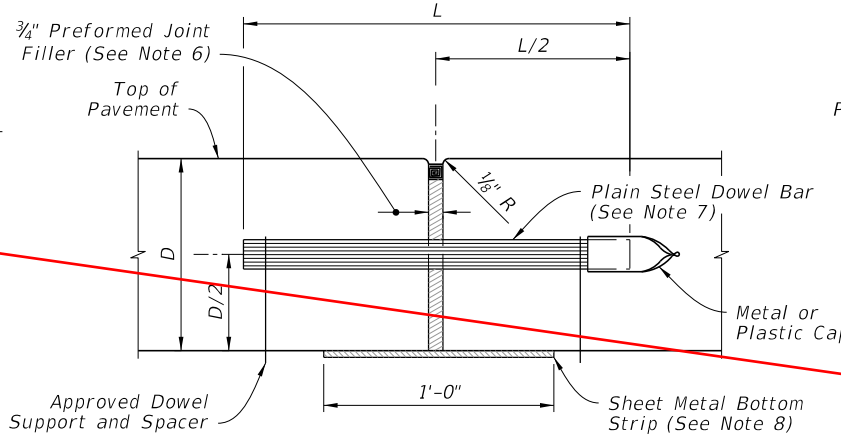


NOTES:

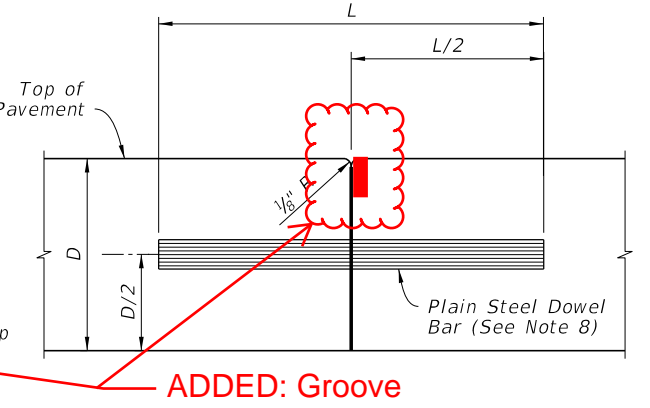
1. For joint seal dimensions see Sheet 2.
2. For slabs poured simultaneously, tie bars may be inserted in the plastic concrete by means approved by the Engineer.
3. For Longitudinal Joints:
 - A. Tie bars are deformed #4 or #5 reinforcing steel bars meeting the requirements of Specification 931.
 - B. Provide a tied joint with #4 bars 25" in length at 24" spacing or #5 bars 30" in length at 36" spacing.
4. Transverse joints are to be spaced at a maximum of 15'. Dowel Bars are required at all transverse joints unless otherwise noted in the plans.
5. Expansion joints to be placed at street intersections and other locations as indicated in the Plans. For bridge expansion joints, see Index 370-001.
6. Punch clean holes in preformed joint filler greater than bar diameter.
7. Coat plain steel dowel bars and welded wire basket assemblies in accordance with Specification 931. Lubricate dowel bars in accordance with Specification 350.
8. Sheet metal bottom strips in accordance with Specification 931. Not required with asphalt base.



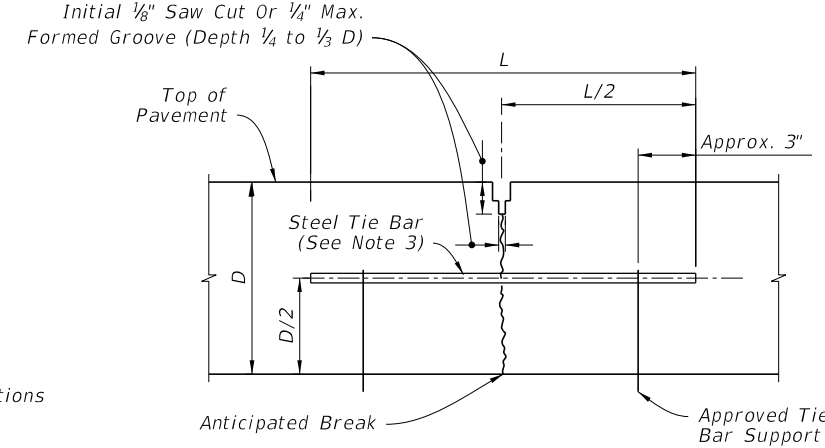
BUTT CONSTRUCTION JOINT



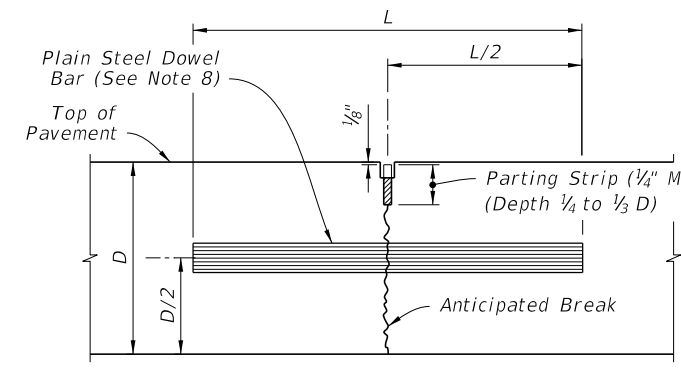
EXPANSION JOINT (See Note 6)



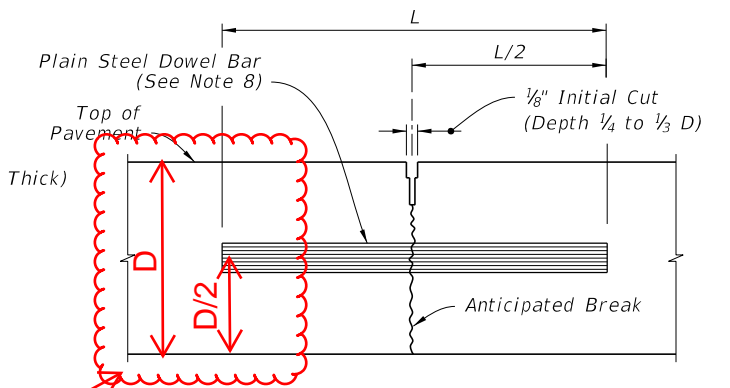
BUTT CONSTRUCTION JOINT (Used At Discontinuance Of Work)



LANE-TIE JOINT (See Note 2)



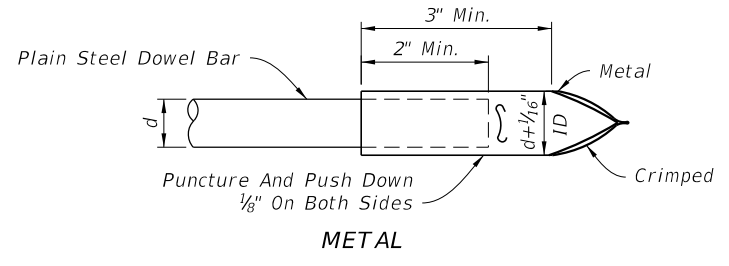
CONTRACTION JOINT (Vibro Case Method)



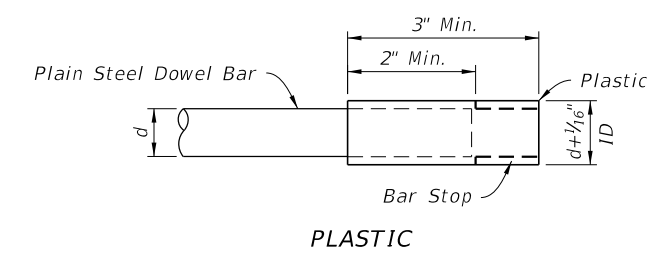
CONTRACTION JOINT (Sawed Method)

LONGITUDINAL JOINTS

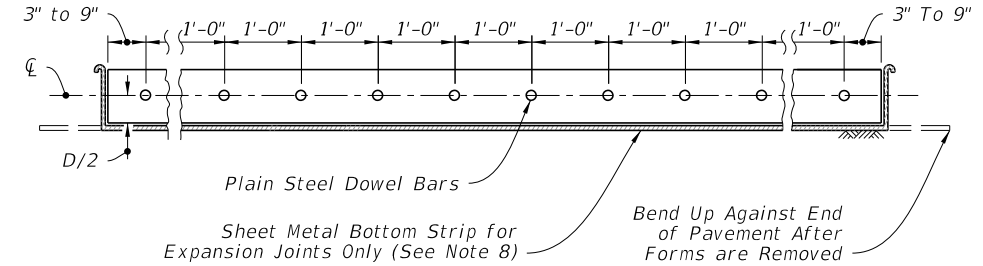
TRANSVERSE JOINTS



METAL

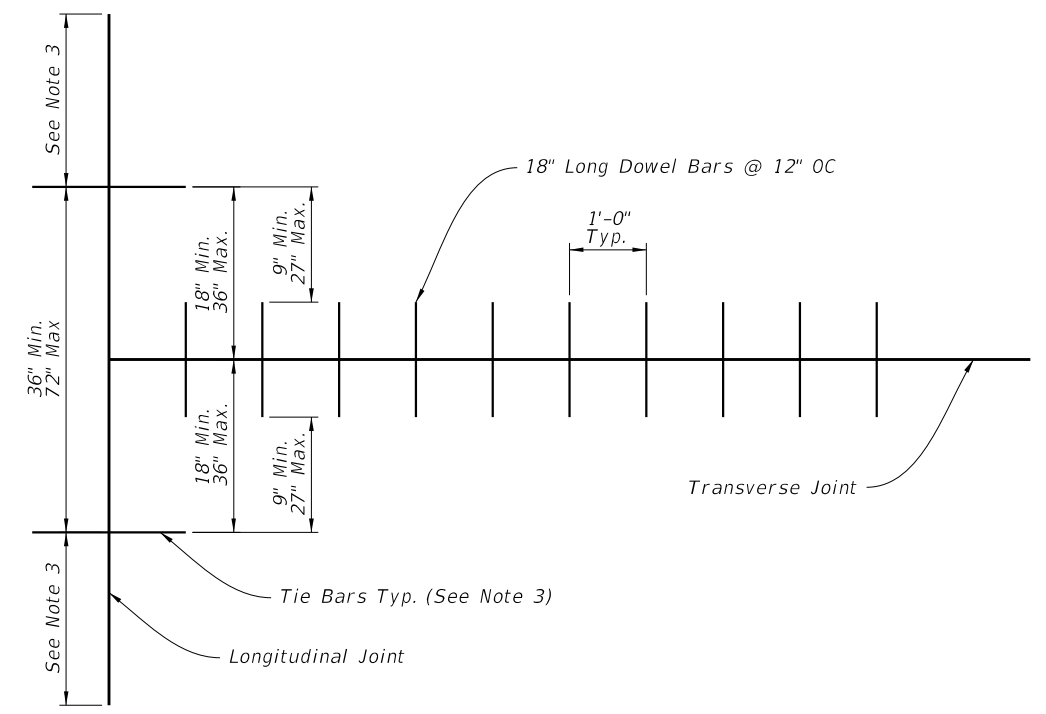


PLASTIC



DOWEL BARS (LENGTH 18")	
Pavement Thickness "D"	Diameter
6"-6 1/2"	3/4"
7"-8"	1"
8 1/2"-10 1/2"	1 1/4"
≥11"	1 1/2"

DOWEL BAR LAYOUT



RELATION OF TIE BARS TO DOWEL BARS

9/21/2021 1:01:12 PM