

Index 415-010 Bar Bending Details (FRP)

Design Criteria

ACI 440.1R-06 Guide for the Design and Construction of Structural Concrete Reinforced with FRP bars; ACI 440.6-08 Specification for Carbon and Glass Fiber-Reinforced Polymer Bar Materials for Concrete Reinforcement; AASHTO LRFD Bridge Design Specifications for GFRP-Reinforced Concrete 2nd Edition; Structures Detailing Manual ([SDM](#)); FDOT Design Manual ([FDM](#)).

Design Assumptions and Limitations

Standard Plans Index 415-010 includes commonly used types, shapes and configurations of straight and bent pultruded reinforcing Fiber-Reinforced Polymer (FRP) reinforcing bars. This standard works with the REINFORCING BAR LIST that must be completed and included in the plans for cast-in-place concrete components where the reinforcing FRP reinforcing bars within the component are not considered incidental to the cost of the component.

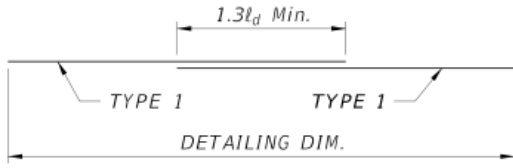
Due to the manufacturing process of pultrusion, the bar bend types and properties are limited and cannot be field formed or modified. Because of these limitations, certain shapes must be obtained utilizing splices with correct development lengths established by the equations found in ACI 440.1R. The Design Aids section below contains examples of typical composite shapes that can be obtained using the single shapes located on **Standard Plans** Index 415-010.

Plan Content Requirements

Complete and include in the plans the REINFORCING BAR LIST. Do not include reinforcing FRP bars for drilled shafts, auger cast piles and standard traffic and pedestrian railings, and all precast components, e.g. prestressed concrete piles and beams, MSE wall copings and precast noise wall posts and panels. For additional information and guidance see the [Specifications](#), **Standard Plans** and/or **Standard Plans Instructions** for a given component.

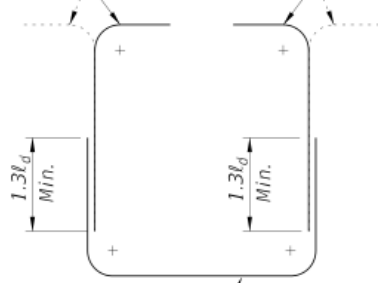
The REINFORCING BAR LIST may be completed using the Rebar Application provided with the FDOT CADD Bar Menu (with manual modifications for the length definitions) or it may be prepared by other manual, automated or combination methods. See **SDM** 4.3 for FRP reinforcing bar detailing procedures.

Design Aids



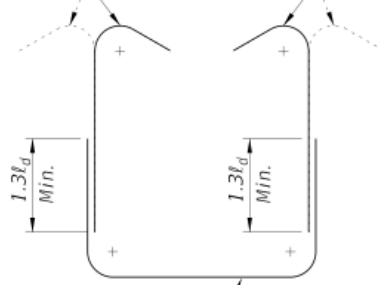
LAPPED STRAIGHT BARS (TYPE 2)

TYPE 10



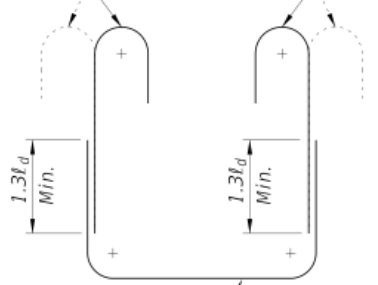
OPEN STIRRUP 1

TYPE 14

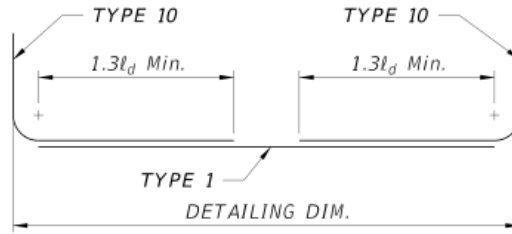


OPEN STIRRUP 2

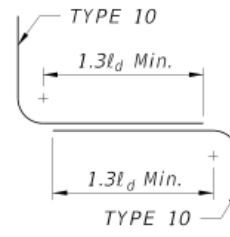
TYPE 17



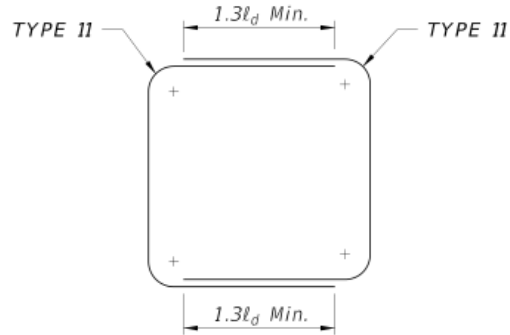
OPEN STIRRUP 3



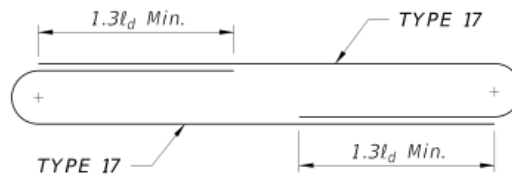
LONG LEG U SHAPE



Z BAR SHAPE



CLOSED STIRRUP 1



CLOSED STIRRUP 2

NOTE: See Developmental Standard D415-010 for referenced Single Bar Bending Types.

===== TYP. COMPOSITE SHAPES =====