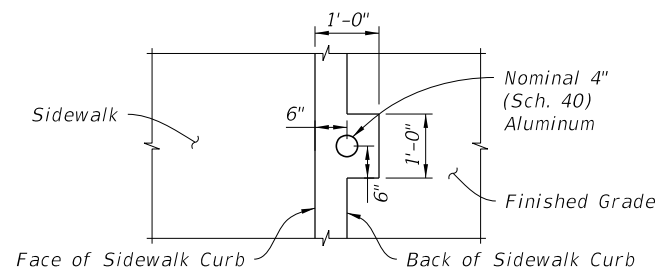
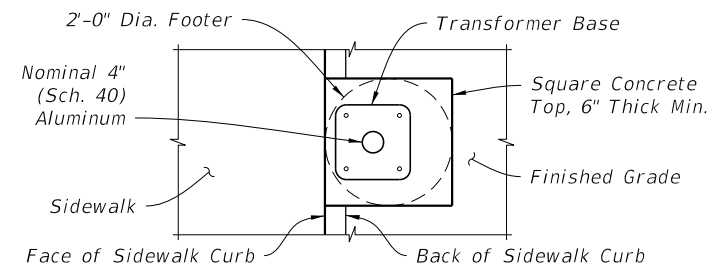


NOTES:

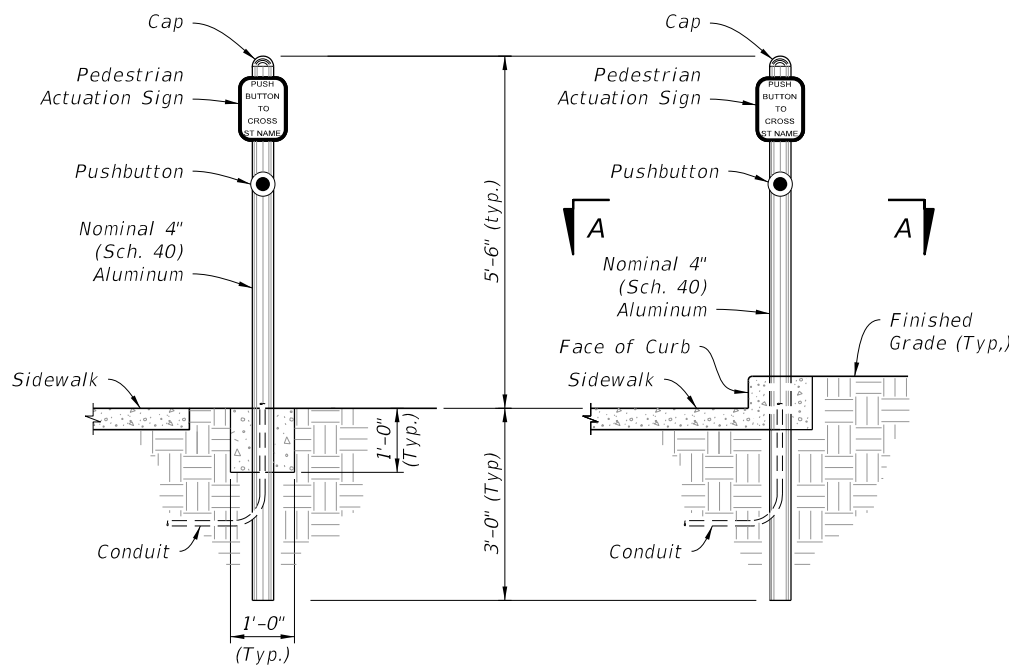
1. Work this Index with Specification 646.
2. For Pedestrian Signals see Index 653-001.
3. For Pedestrian Detector Assembly (i.e., Pushbutton and Sign) details see Index 665-001.
4. Construct footing with Class I Concrete, footing may be Cast-In-Place (C-I-P) or Precast.



PLAN VIEW
SECTION A-A



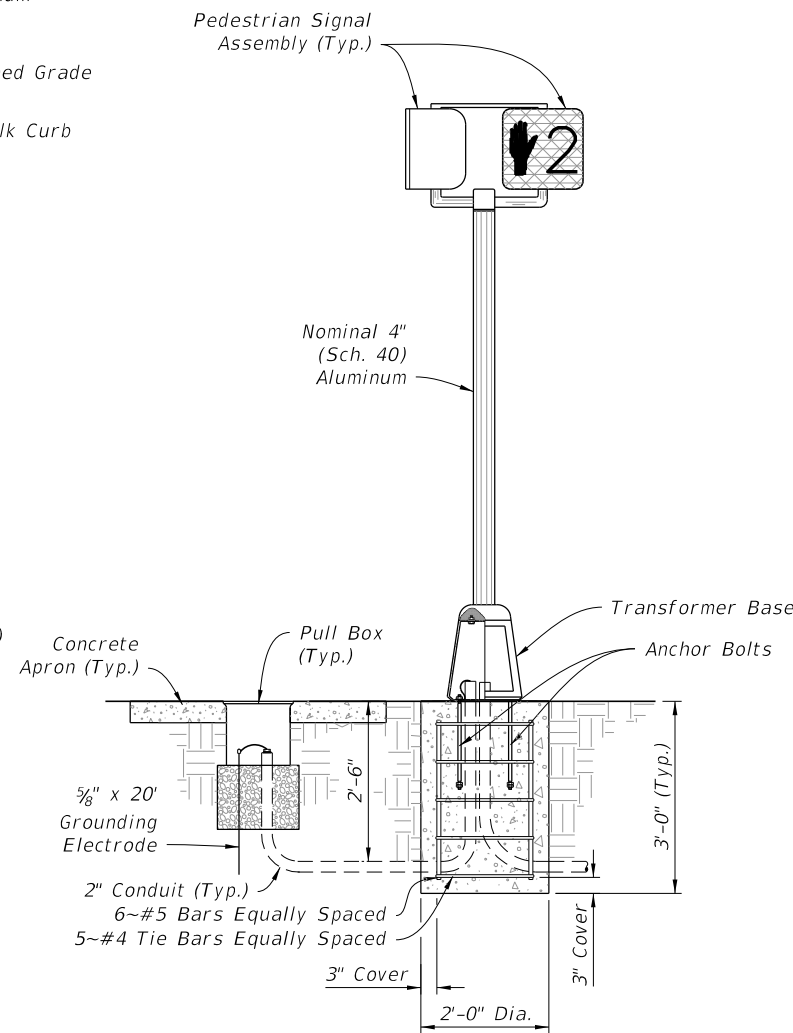
PLAN VIEW
SECTION B-B



ADJACENT TO SIDEWALK

IN SIDEWALK CURB

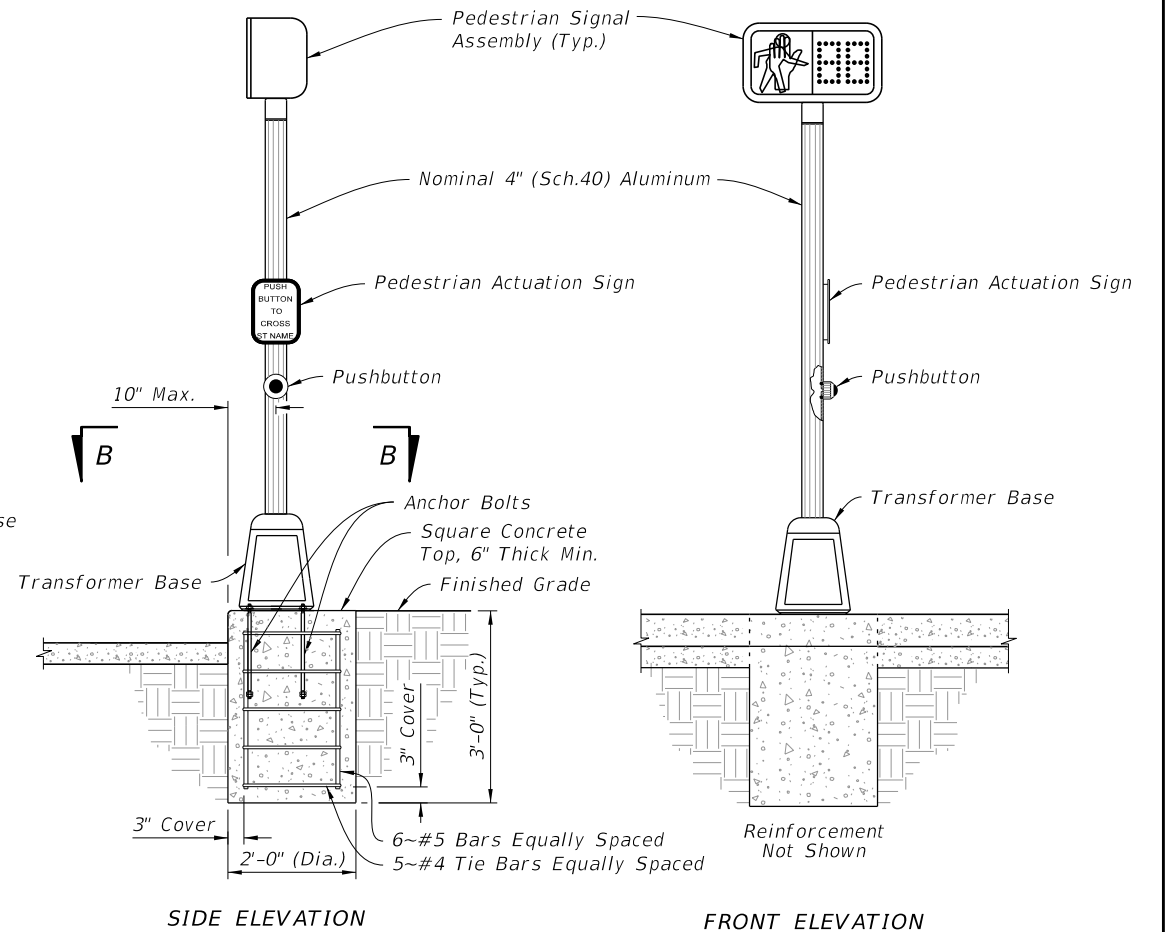
POST MOUNTED



ADJACENT TO SIDEWALK

IN SIDEWALK CURB
(Conduit And Grounding Not Shown)


PEDESTAL MOUNTED



SIDE ELEVATION

FRONT ELEVATION

11/03/14 AM
10/8/2021

LAST REVISION 11/01/20	REVISION	DESCRIPTION:		FY 2021-22 STANDARD PLANS	ALUMINUM POST AND PEDESTAL MOUNTED PEDESTRIAN DETECTORS AND SIGNALS	INDEX 646-001	SHEET 1 of 1
---------------------------	----------	--------------	---	------------------------------	--	------------------	-----------------