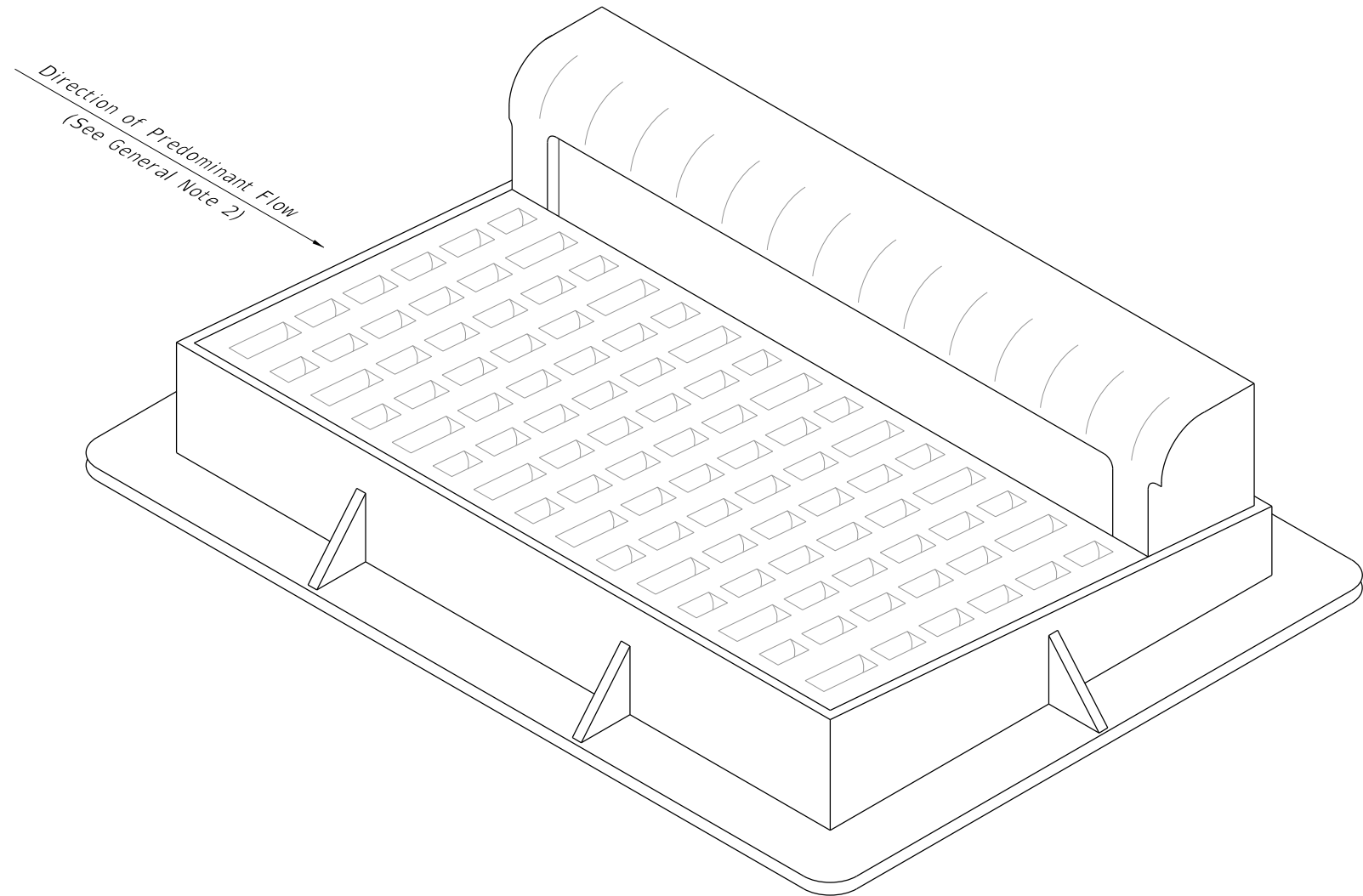


GENERAL NOTES:

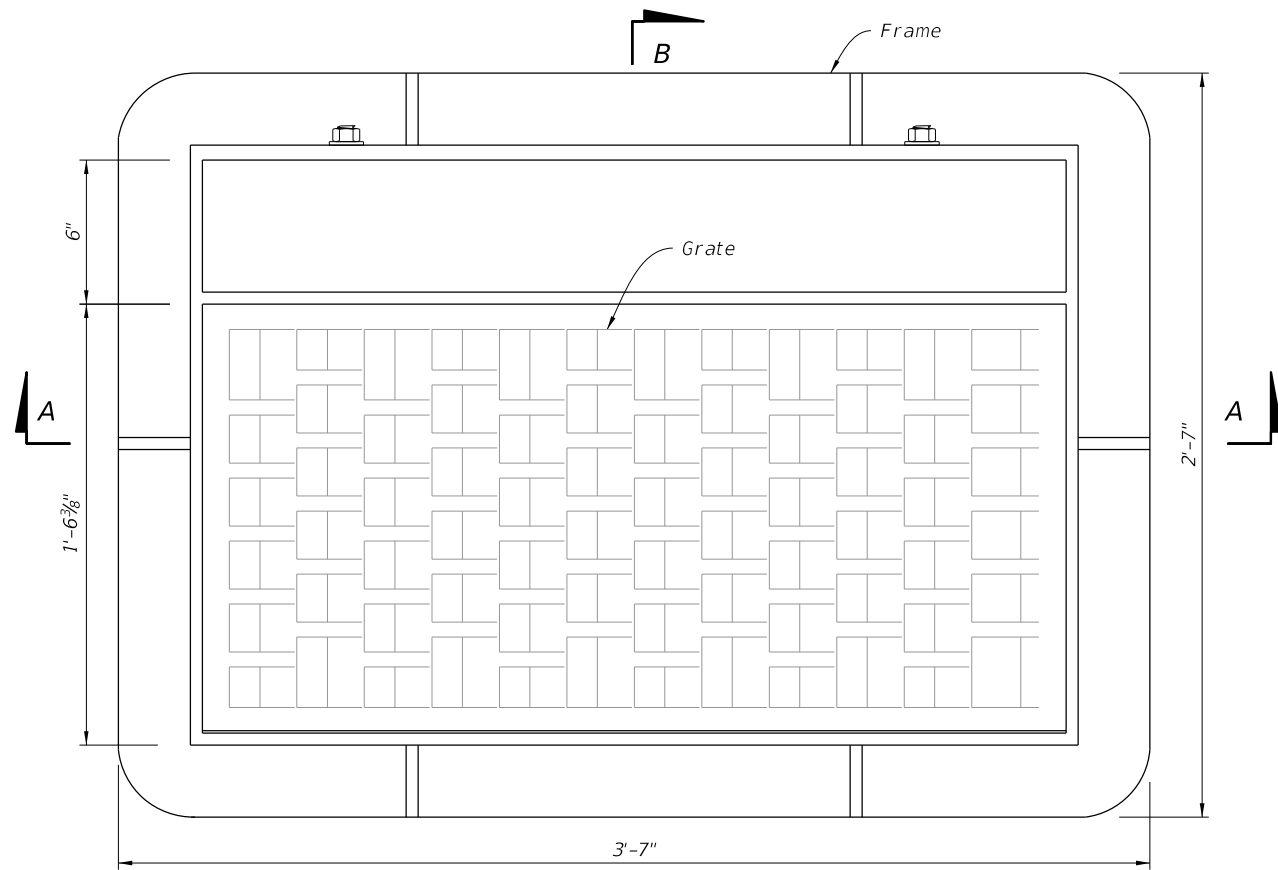
1. Work this Index with Index 425-001 and Index 425-010.
2. Orient grate with vanes directed toward predominant flow.
3. Provide 1 1/4" minimum cover for steel in slab tops unless otherwise shown. Tops may be either cast-in-place or precast concrete.
4. Place top slab openings such that 2 edges of inlet frame will be located directly above bottom wall or riser wall for Alternate B applications..
5. When used on a structure with dimensions larger than those detailed on Sheet 3 and risers are not applied, construct the top slab using Index 425-010 with the slab opening adjusted to 24"x36". The "Special Top Slab" on Index 425-010 is not permitted.
6. Frame may be adjusted with one to six courses of brick.
7. Vaned grates with approximately equal openings that satisfy AASHTO HL-93 loading are permitted. Provide reversible (right or left) grates.



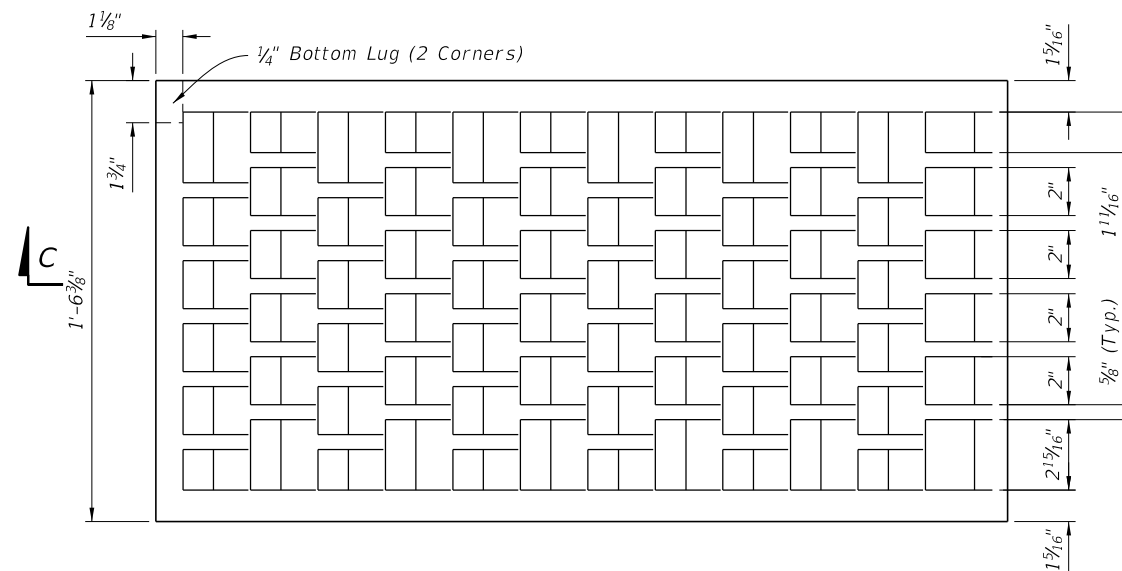
| TABLE OF CONTENTS: | |
|--------------------|----------------------------|
| Sheet | Description |
| 1 | General Notes and Contents |
| 2 | Frame and Grate Details |
| 3 | Top Slab Details |

=====**CURB INLET TOP TYPE 9**=====

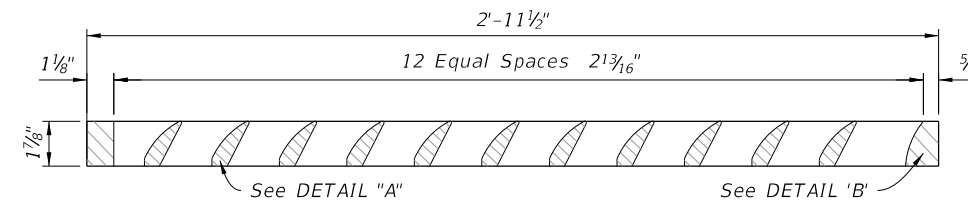
10/12/2020 6:45:58 AM



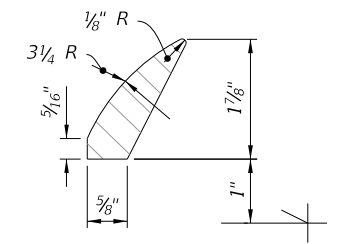
PLAN



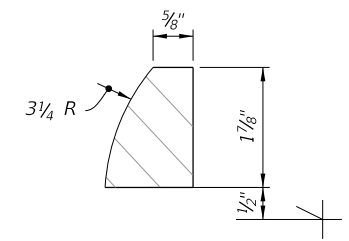
PLAN



SECTION C-C

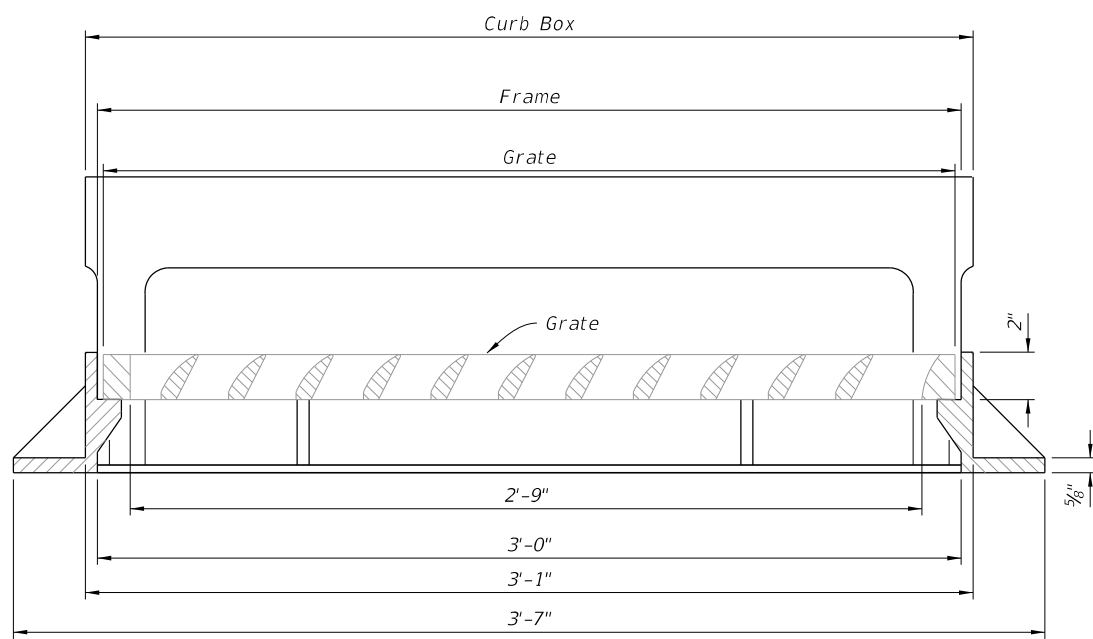


DETAIL "A"

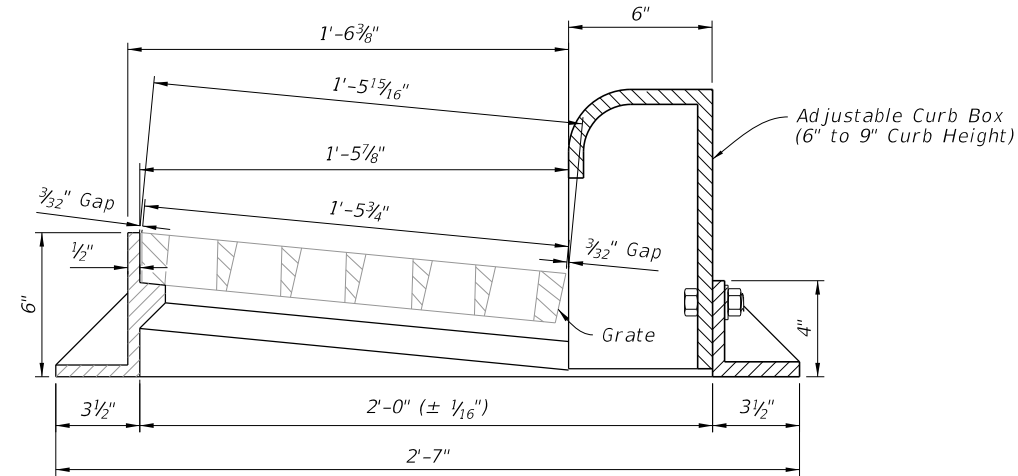


DETAIL "B"

GRATE DETAILS



SECTION A-A



SECTION B-B

FRAME AND GRATE DETAILS

FRAME AND GRATE DETAILS

10/12/2020 6:46:51 AM

| | |
|---------------------------|--------------|
| LAST REVISION 11/01/20 | DESCRIPTION: |
|---------------------------|--------------|

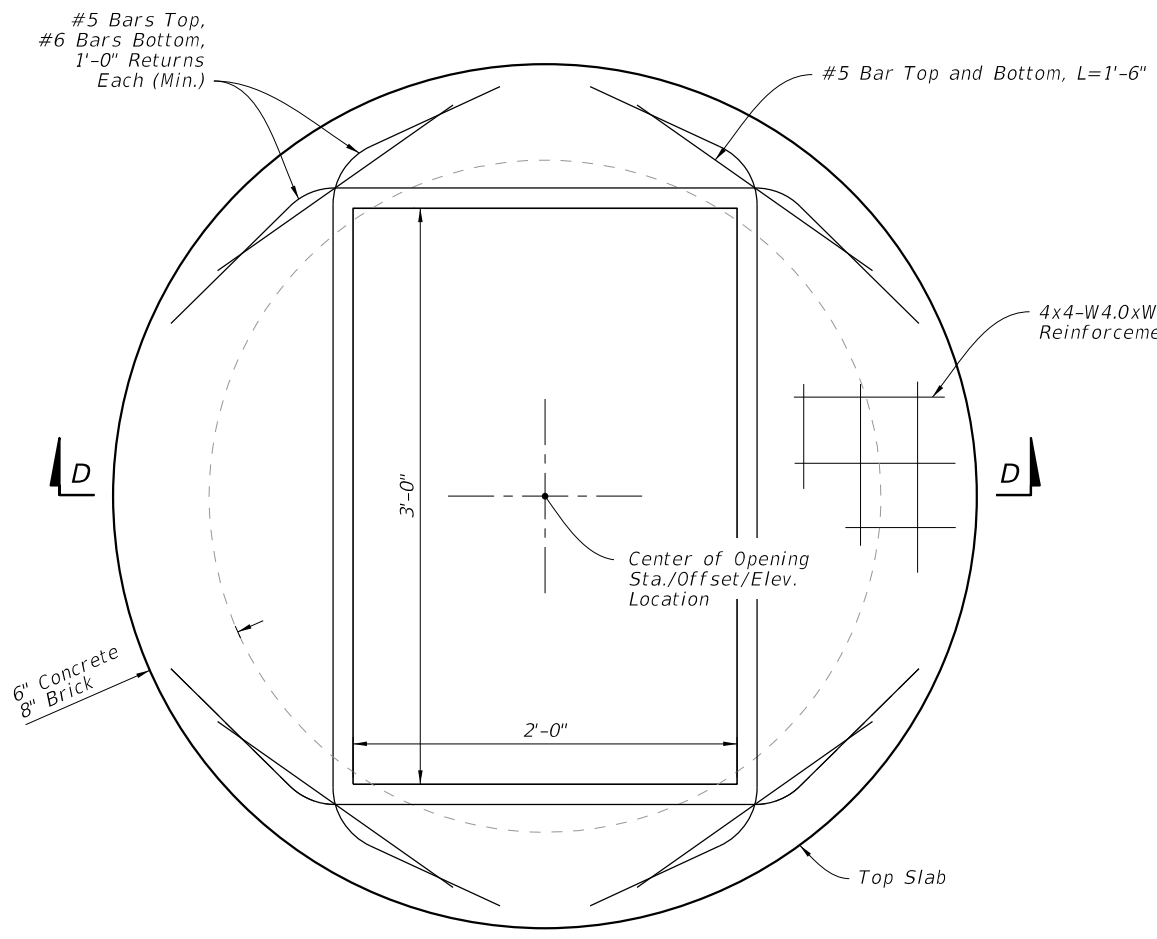


FY 2021-22
STANDARD PLANS

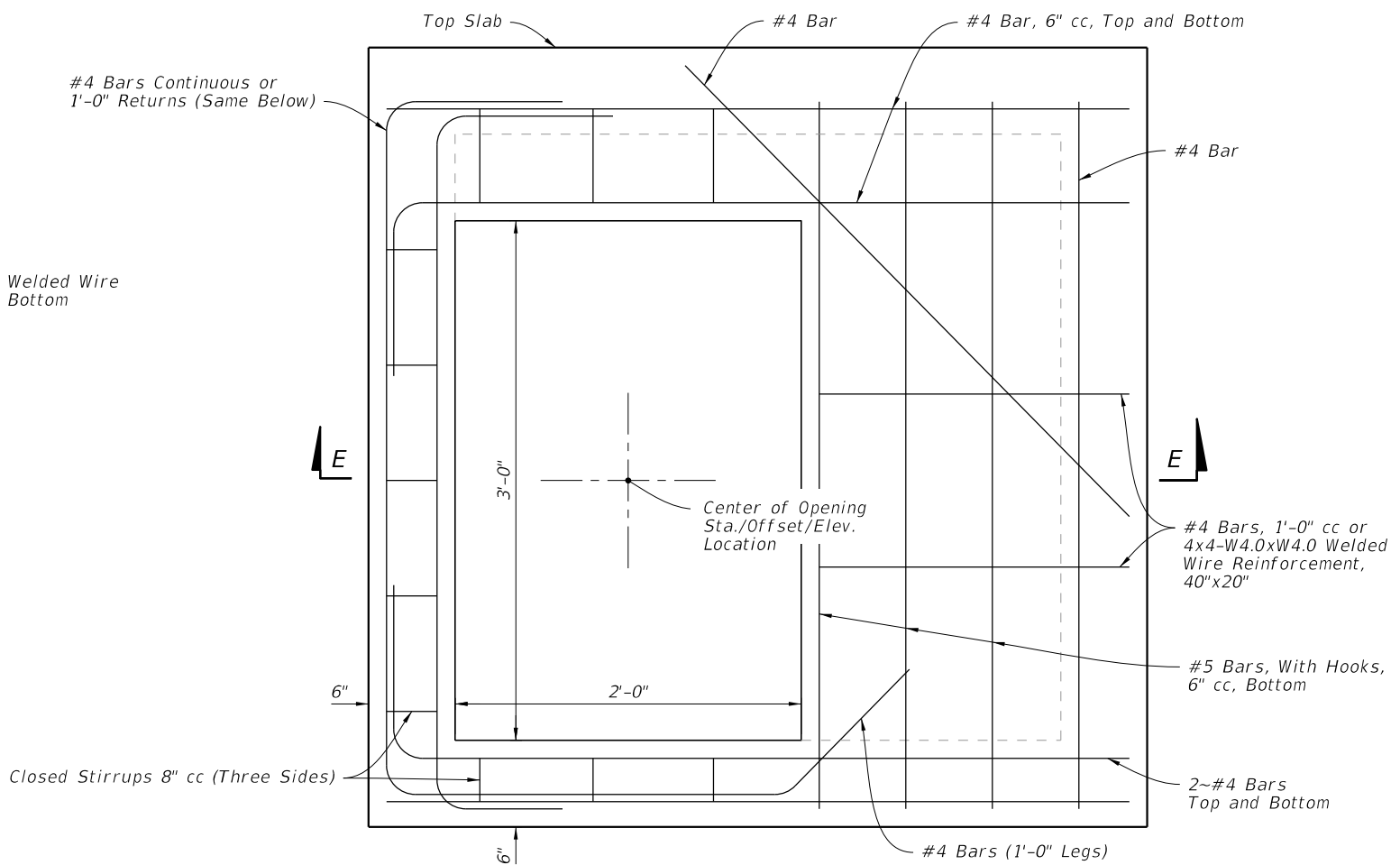
CURB INLET TOP TYPE 9

INDEX
425-024

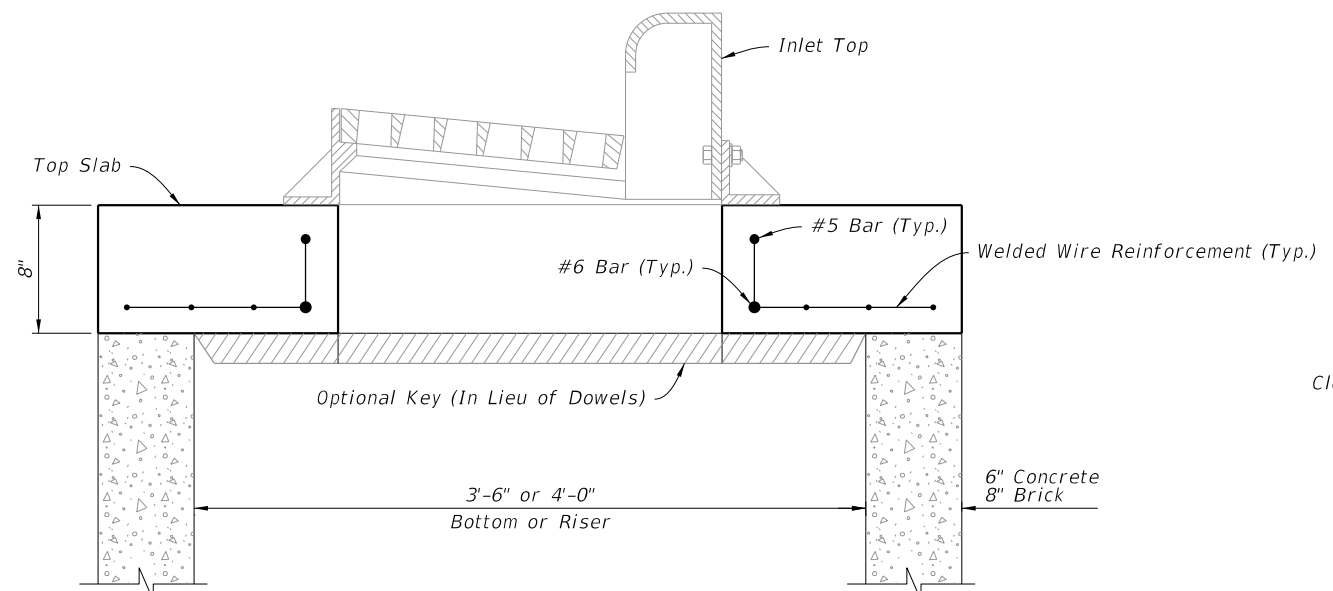
SHEET
2 of 3



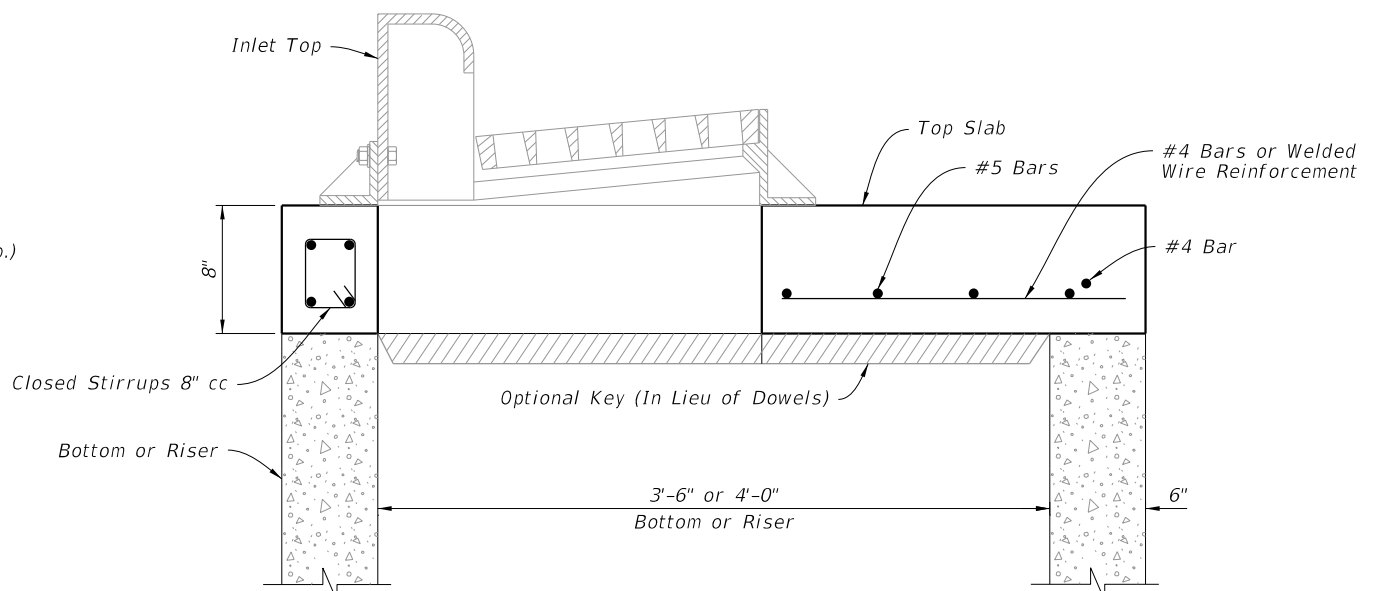
PLAN



PLAN



SECTION D-D



SECTION E-E

TOP SLAB DETAILS

10/12/2020 6:46:57 AM

| | |
|---------------------------|--------------|
| LAST REVISION 11/01/20 | DESCRIPTION: |
|---------------------------|--------------|



CURB INLET TOP TYPE 9

| | |
|------------------|-----------------|
| INDEX 425-024 | SHEET 3 of 3 |
|------------------|-----------------|