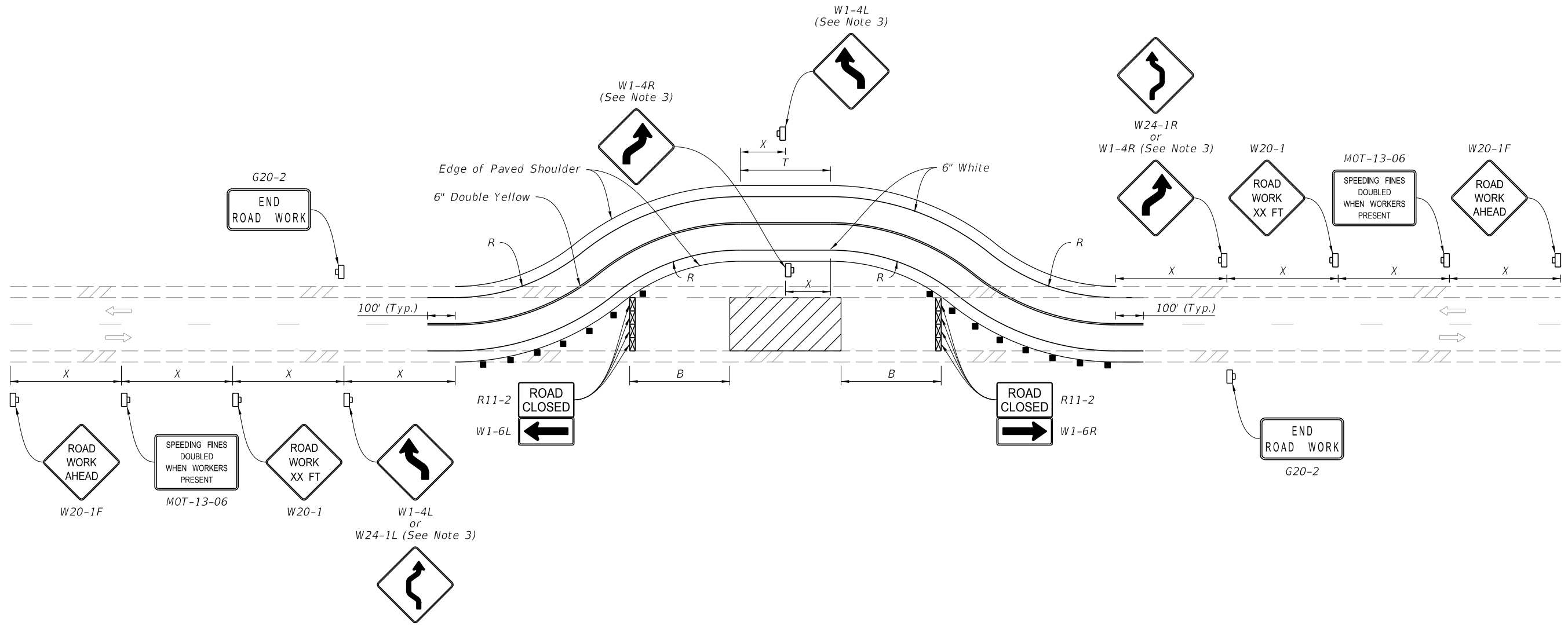


11/23/2020 8:07:35 AM



SYMBOLS:

- Work Area
- Channelizing Device (See Index 102-600)
- Work Zone Sign
- Lane Identification and Direction of Traffic
- Type III Barricade

NOTES:

1. This Index applies to Two-Lane, Two-Way Roadways with temporary diversions.
2. B=Buffer Length
X=Work Zone Sign Distance
R=Radius of Curve
See Index 102-600 for "B", "X", and channelizing device spacing values.
See Plans for "R" values.
3. If the tangent distance "T" is less than 600', for each direction use a "Double Reverse Curve" sign (W24-1) instead of the first "Reverse Curve" sign (W1-4) and omit the second "Reverse Curve" sign.

LAST REVISION	11/01/20	DESCRIPTION:
---------------	----------	--------------

**FY 2021-22
STANDARD PLANS**

**TWO-LANE, TWO-WAY
TEMPORARY DIVERSION CONNECTION**

INDEX	SHEET
102-608	1 of 1