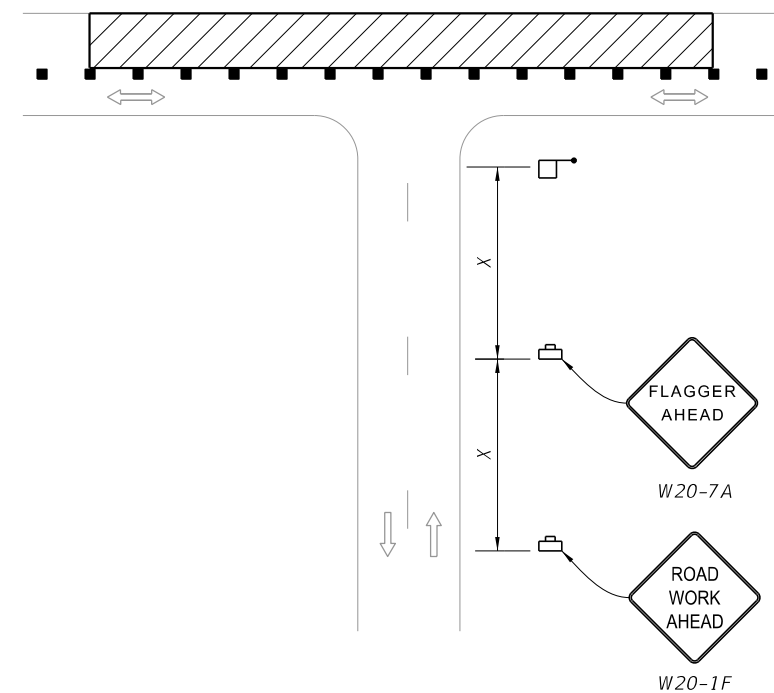


**NOTES:**

1. L = Taper Length  
B = Buffer Length  
X = Work Zone Sign Distance  
See Index 102-600 for "L", "B", "X", and channelizing device spacing values.
2. District Traffic Operations Engineer must approve the installation and timing of temporary signals prior to beginning of work. Adjust timing based on changing field conditions as approved by the Worksite Traffic Supervisor. Obtain approval from the District Traffic Operations Engineer for any timing changes that are either reoccurring or last longer than 24 hours.
3. Optionally, use "Signal Ahead" signs with symbols (W3-3) instead of "Signal Ahead" signs with text (W3-3A).
4. Use temporary raised rumble strips in accordance with Index 102-603.
5. The "Speeding Fines Doubled When Workers Present" signs (MOT-13-06) and "End Road Work" signs (G20-2), along with associated work zone sign distances, may be omitted when the work zone will be in place for 24 hours or less.
6. For the maximum distance between temporary traffic signals, do not exceed the distance at which the temporary traffic signals can safely communicate. When the distance temporary traffic signals is greater than 0.25 miles, use a combination of a pilot vehicle and manually-controlled temporary traffic signals.
7. Monitor temporary traffic signals by having one or more workers present during operation. In the event of a temporary traffic signal failure, use flaggers to control traffic.
8. If the work encroaches on a marked bicycle lane or rideable shoulder, close the lane or shoulder in accordance with the Plans.

**SYMBOLS:**

- Work Area
- Channelizing Device (See Index 102-600)
- Lane Identification and Direction of Traffic
- Temporary Traffic Signal
- Work Zone Sign
- Flagger



==== SIDE ROAD INTERSECTING THE WORK ZONE ====

10/12/2020 6:16:45 AM

LAST REVISION 11/01/20	REVISION	DESCRIPTION:		FY 2021-22 STANDARD PLANS	TWO-LANE ROADWAY, LANE CLOSURE USING TEMPORARY TRAFFIC SIGNALS	INDEX 102-606	SHEET 1 of 1
---------------------------	----------	--------------	--	------------------------------	-------------------------------------------------------------------	------------------	-----------------