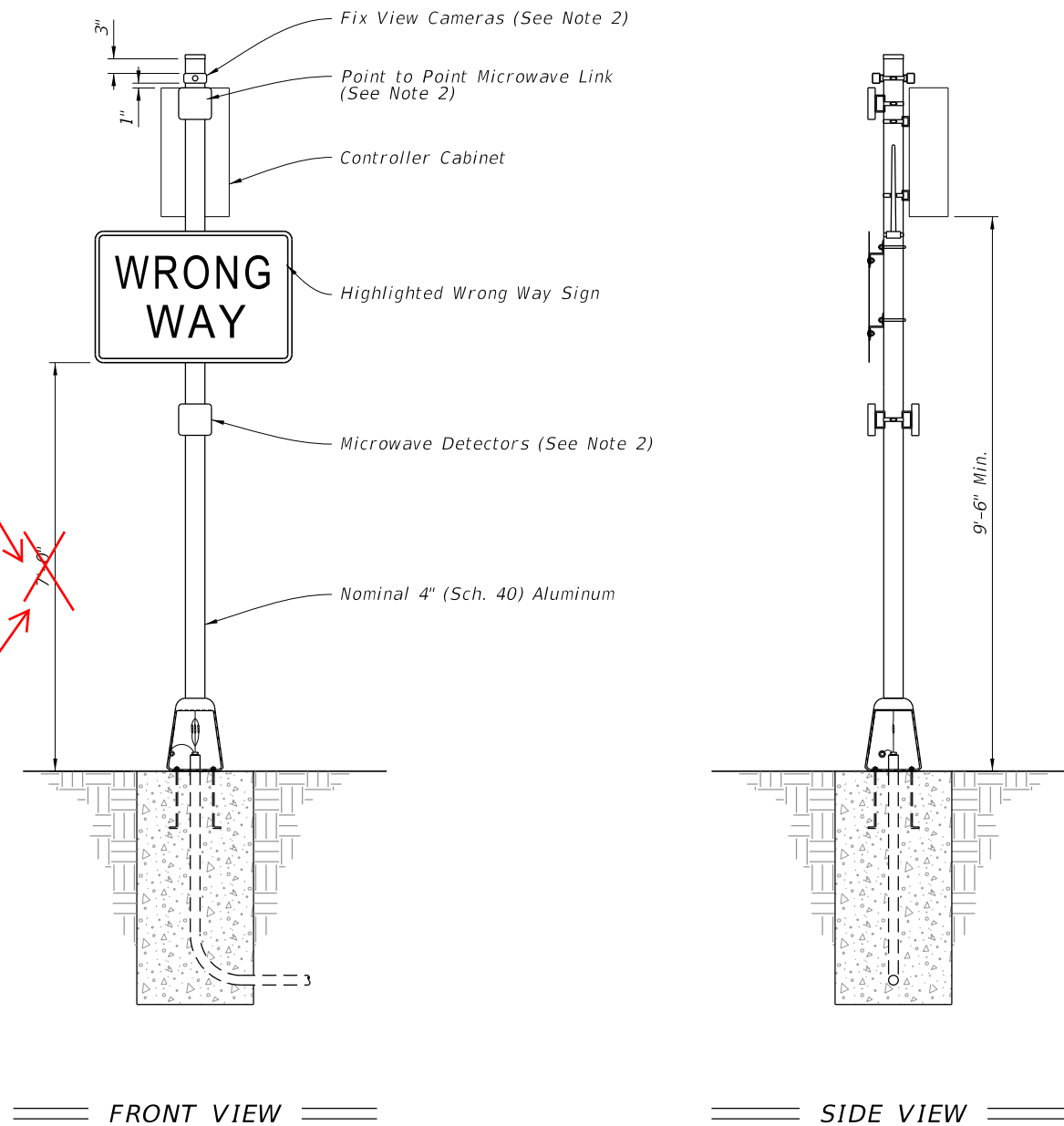


10/12/2020 9:09:13 AM



- NOTES:**
1. Type A7 Assembly (Conventionally-Powered) is shown.
 2. Install cameras, point to point microwave link, microwave detectors, and antennas in accordance with the manufacturer's instructions.
 3. For solar powered assemblies, install controller and batteries in the same ground mounted cabinet. Install a separate pole for mounting the solar panel. Install the solar panel pole and cabinet as close to the right of way boundary as possible. Orient solar panel to face South.

LAST REVISION 11/01/20	DESCRIPTION:
---------------------------	--------------


**FY 2021-22
STANDARD PLANS**

ENHANCED HIGHWAY SIGNING ASSEMBLIES

INDEX 700-120	SHEET 9 of 10
-------------------------	-------------------------

ROADSIDE SIGN ASSEMBLY-7