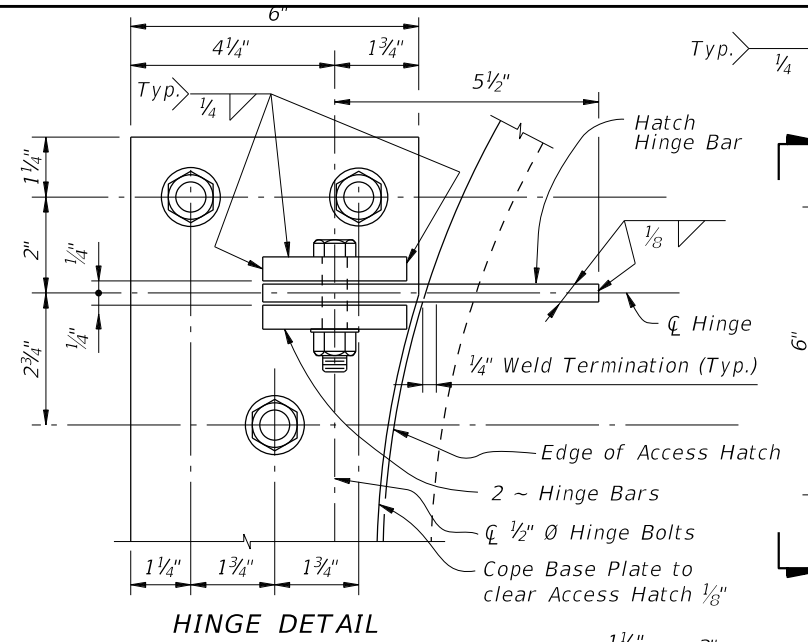
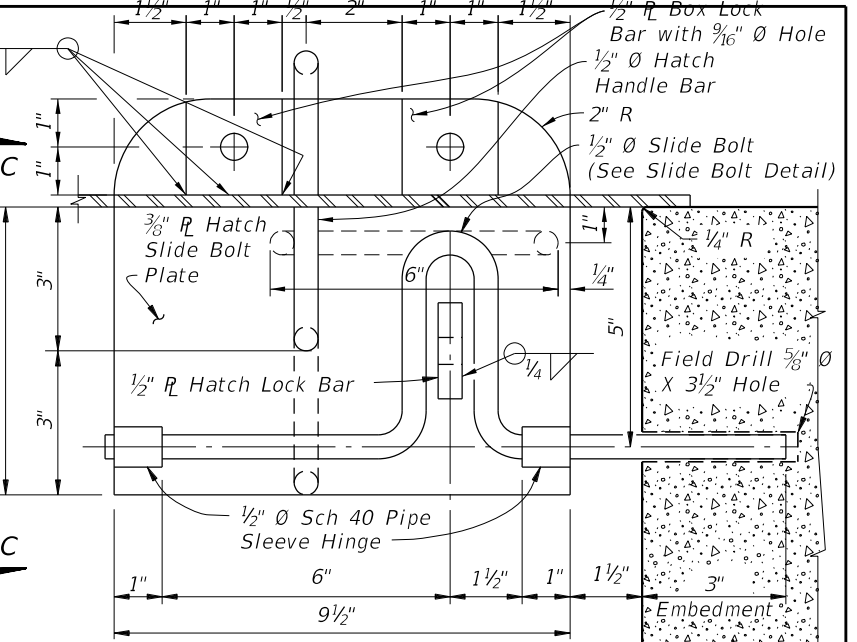


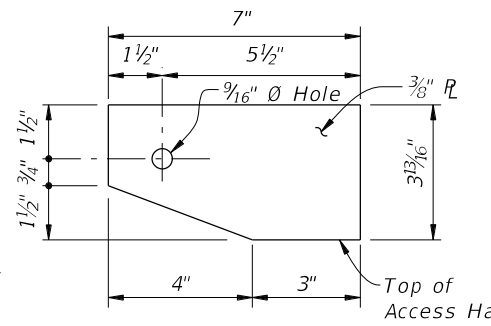
PLAN VIEW OF ACCESS HATCH ASSEMBLY



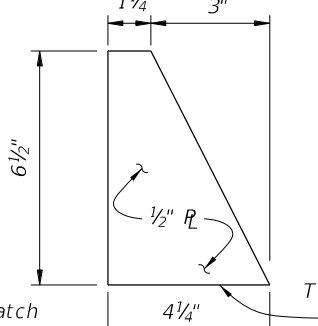
HINGE DETAIL



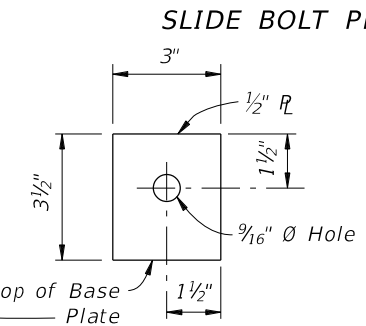
SLIDE BOLT PLATE DETAIL



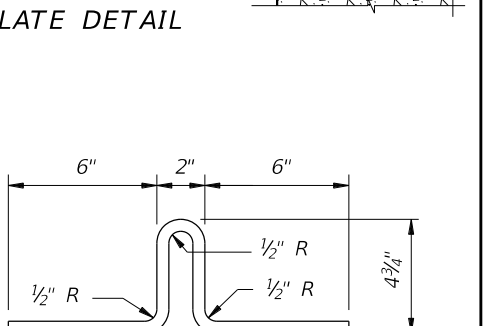
HATCH HINGE BAR DETAIL



STOP BAR DETAIL

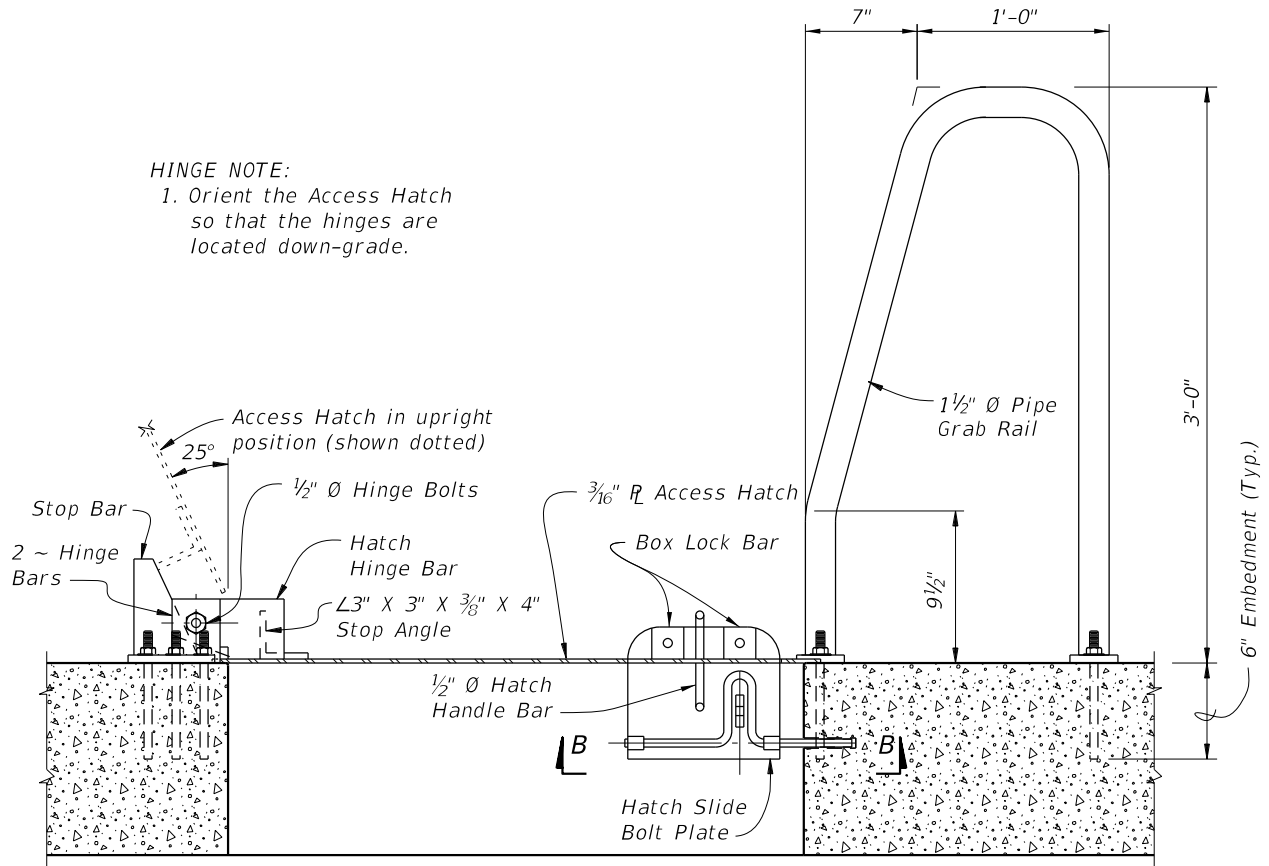


HINGE BAR DETAIL

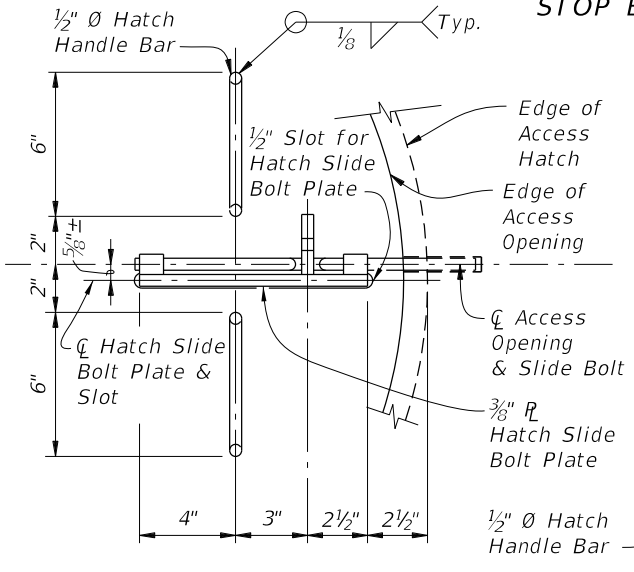


SLIDE BOLT DETAIL

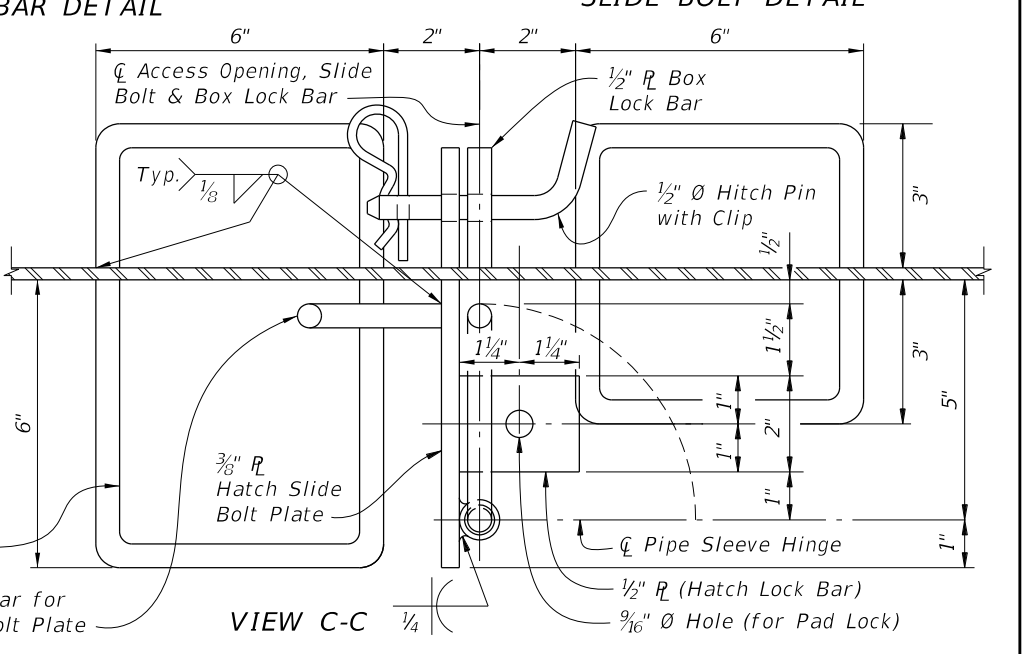
**HINGE NOTE:**  
1. Orient the Access Hatch so that the hinges are located down-grade.



SECTION THRU ACCESS OPENING



VIEW B-B



VIEW C-C

- NOTES:**
1. All Structural Steel material in Access Hatch Assemblies shall conform to ASTM A709 Grade 36.
  2. 1 1/2" Ø Pipe Grab Rail shall be in accordance with ASTM A53 Grade B for standard weight pipe (Schedule 40).
  3. 1/2" Ø Hatch Handle Bar and Hitch Pin shall be in accordance with ASTM A36.
  4. All bolts shall conform to ASTM A307 or A449. All nuts shall conform to ASTM A563 and all washers shall conform to ASTM F-436.
  5. All exposed edges of plates and openings shall be ground smooth.
  6. See Framing Plan sheets for locations of Access Hatch Openings.
  7. Coat structural steel in accordance with Specification Section 560.
  8. Include the cost of the Access Hatch Assembly and incidental items in the cost of the Concrete Box Section. No separate payment will be made for coating structural steel.

10/14/2019 4:05:37 PM

LAST REVISION 07/01/15	REVISION	DESCRIPTION:		FY 2020-21 STANDARD PLANS	ACCESS HATCH ASSEMBLY FOR CONCRETE BOX SECTIONS	INDEX 460-251	SHEET 1 of 1
---------------------------	----------	--------------	--	------------------------------	--	------------------	-----------------