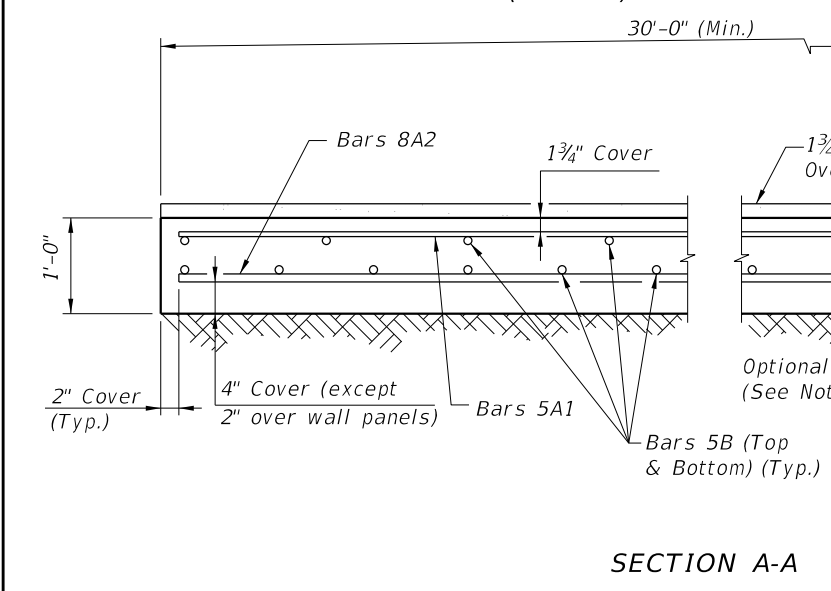
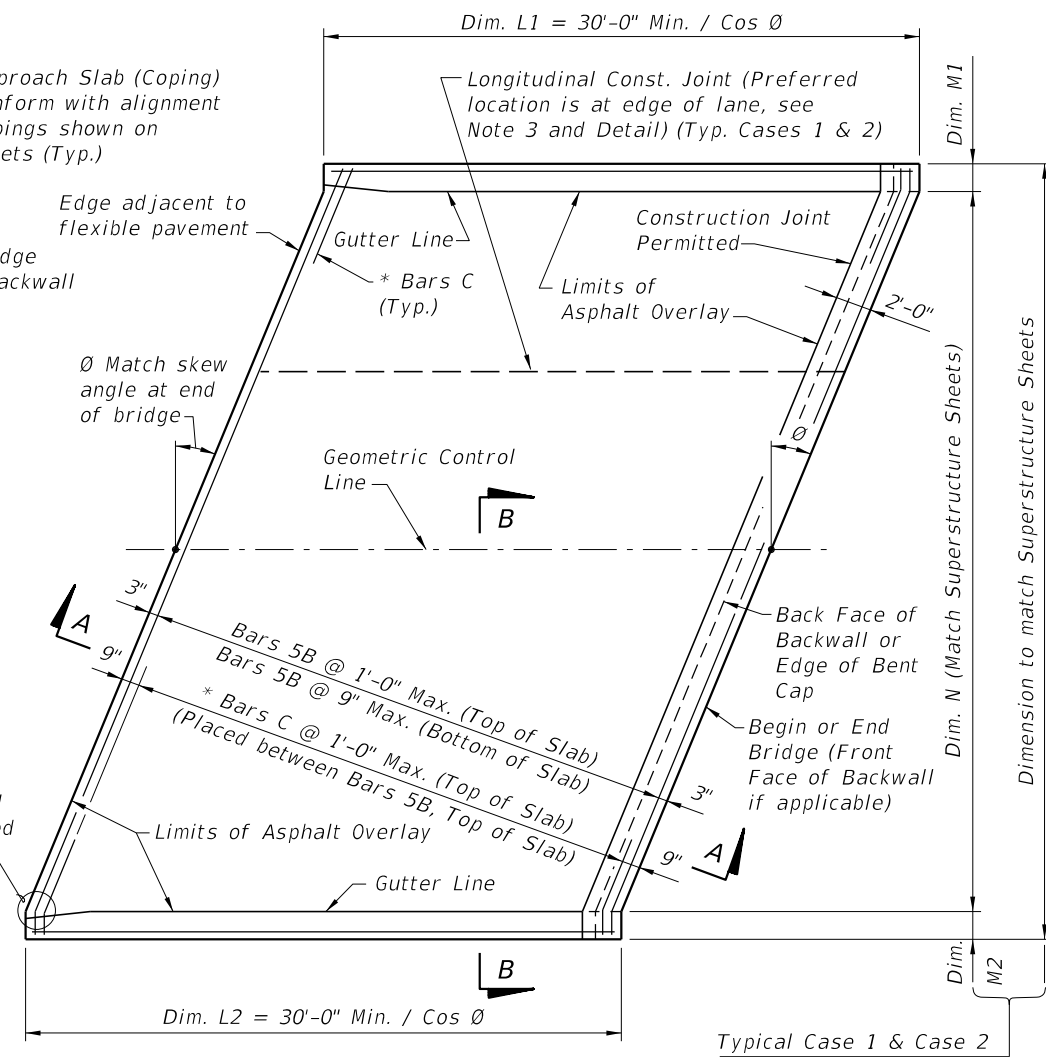


PLAN VIEW (CASE 1)

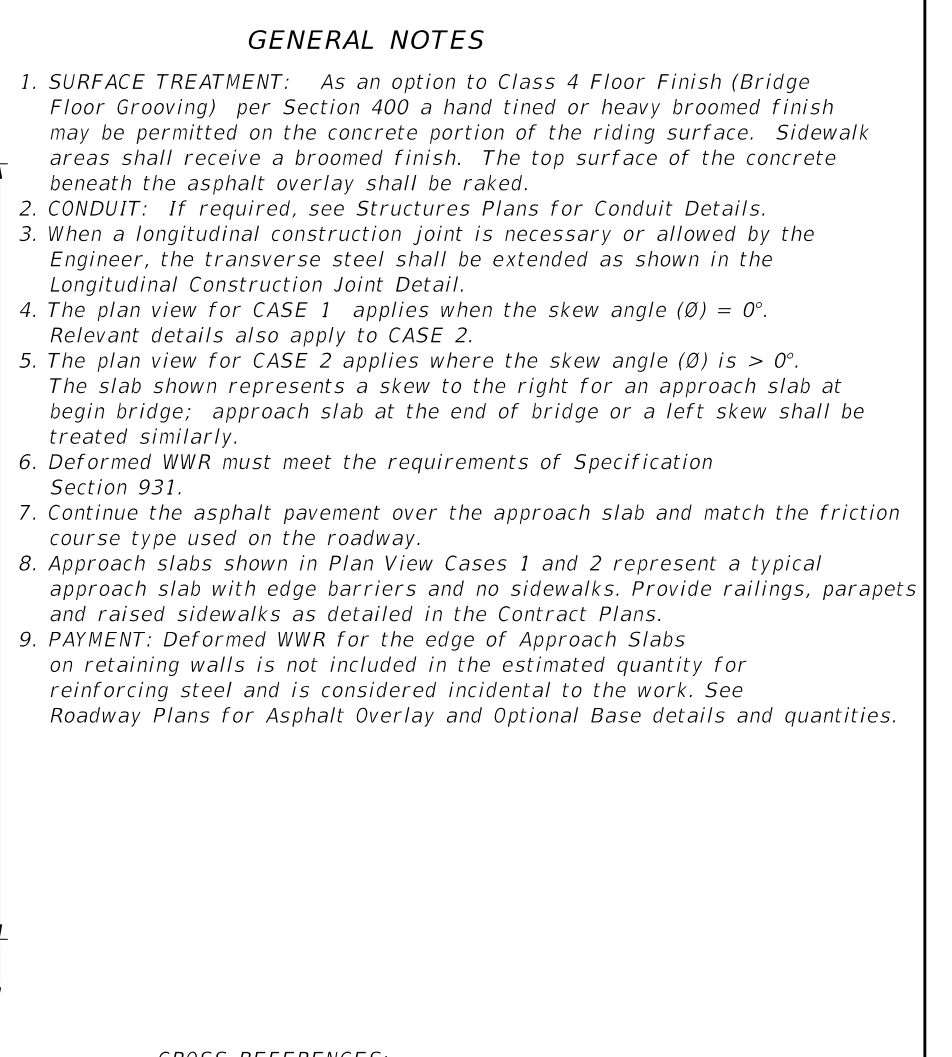


SECTION A-A

* NOTE: Bars C are required as shown when the 36" or 42" Single-Slope Traffic Railings, or the Traffic Railing/Noise Wall, are used at the edge of the Approach Slab.



PLAN VIEW (CASE 2)



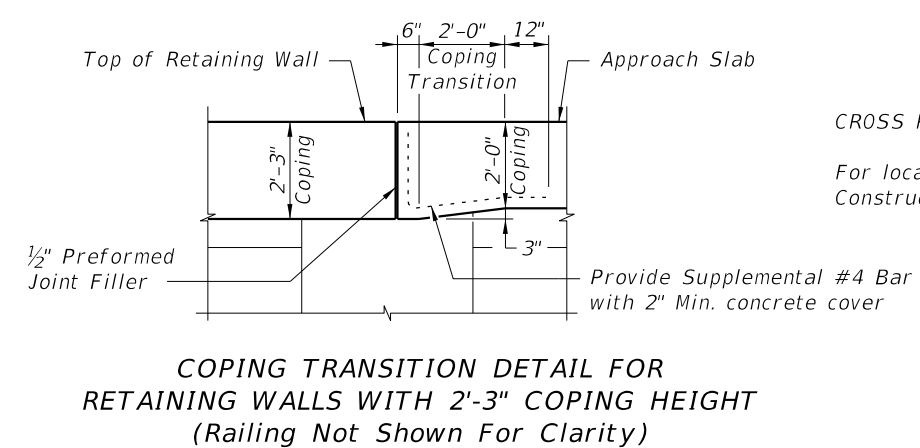
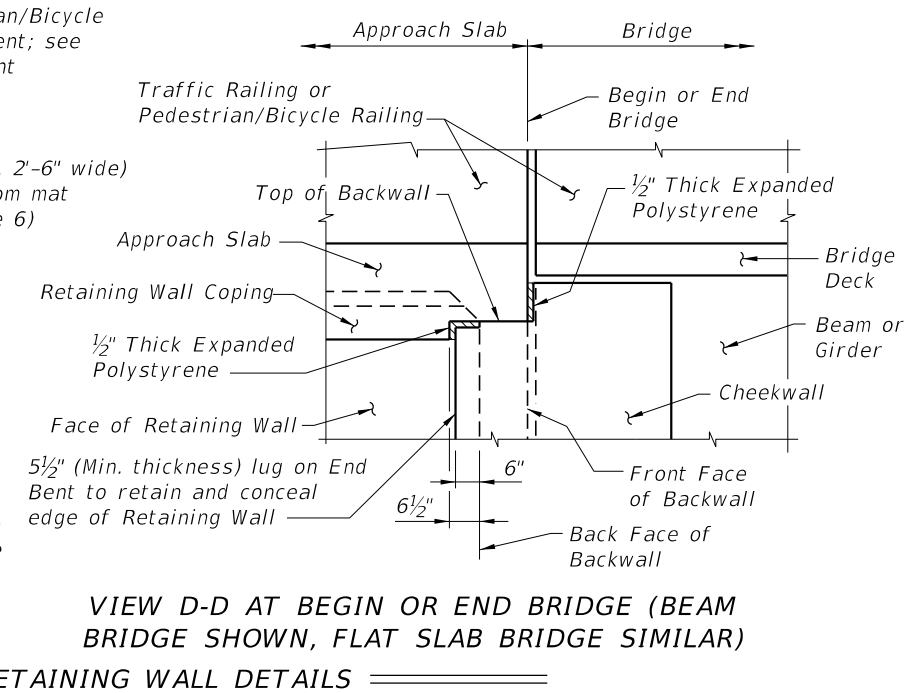
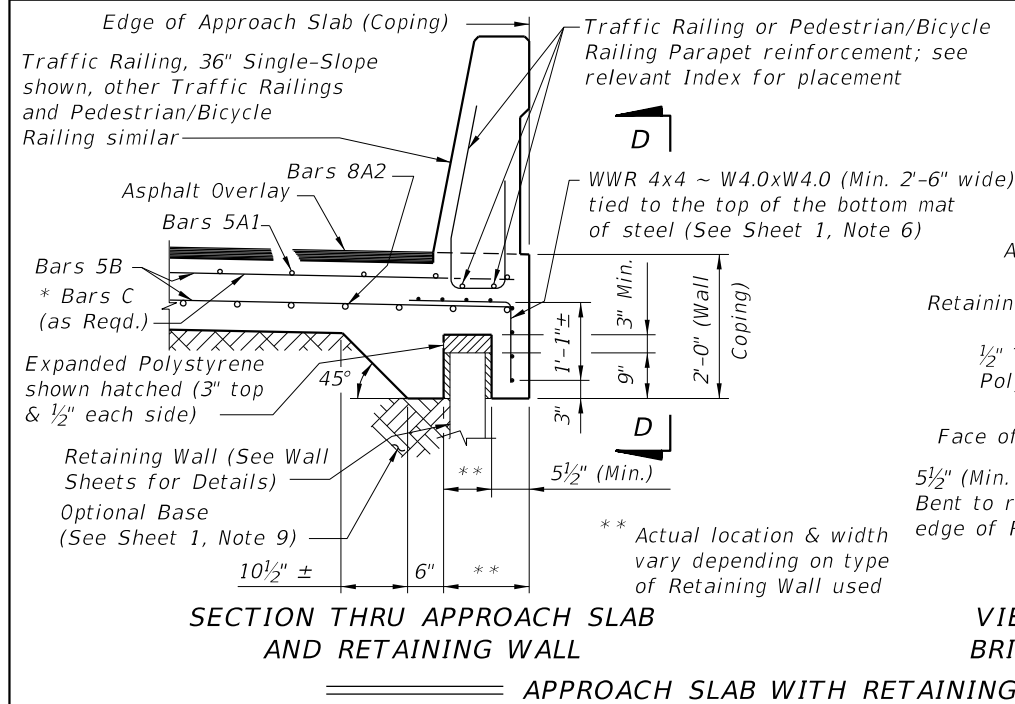
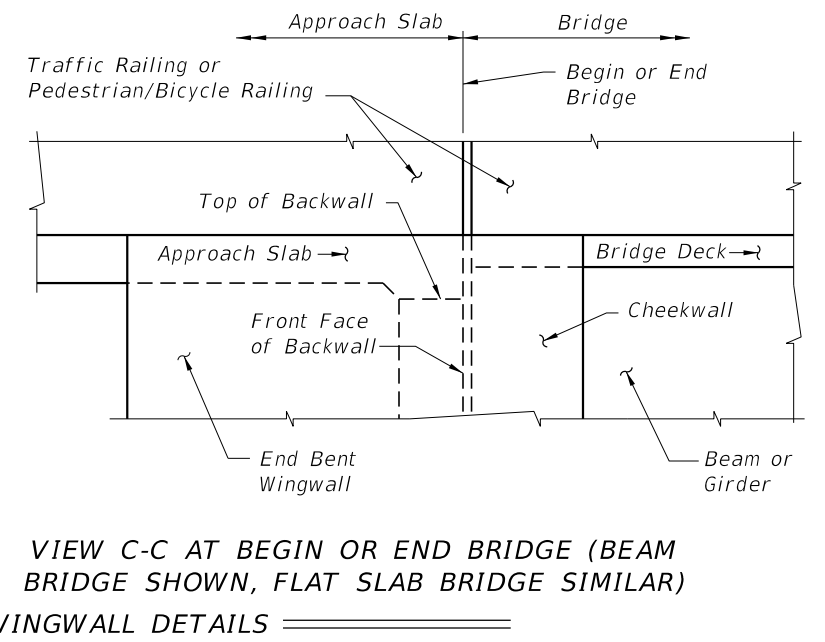
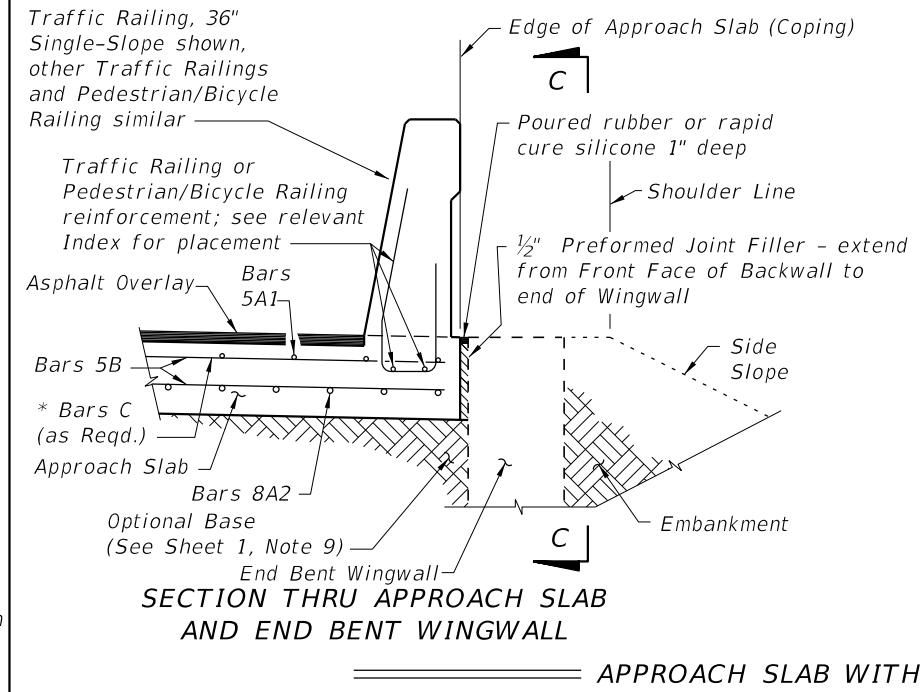
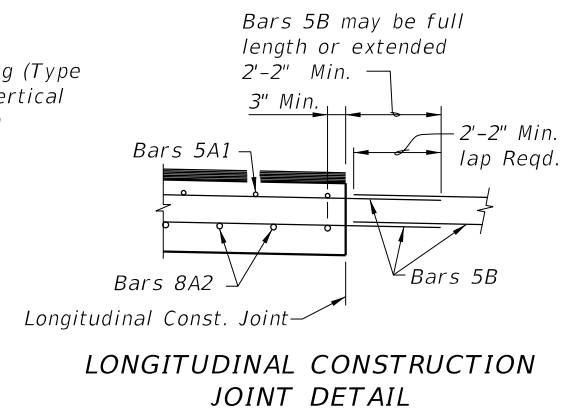
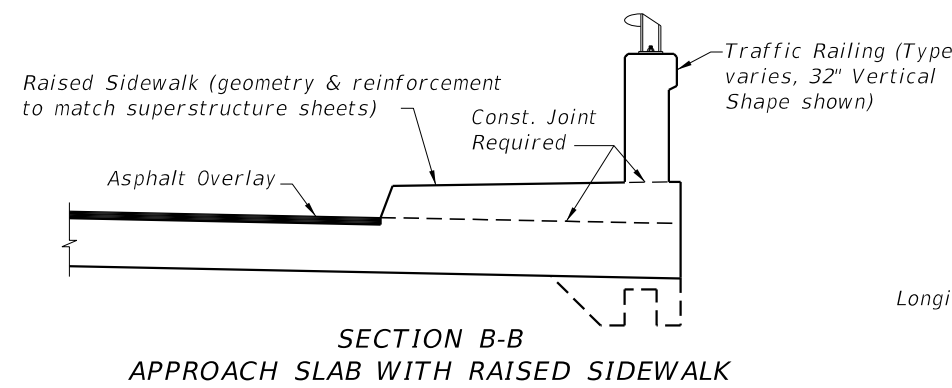
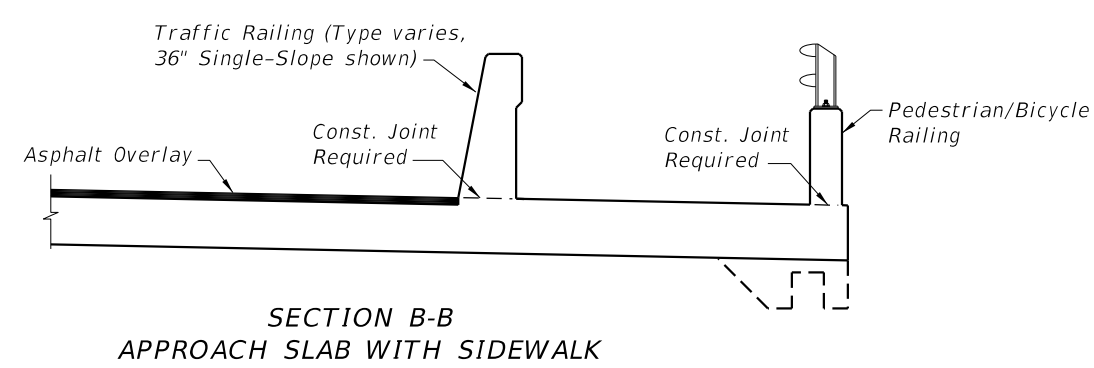
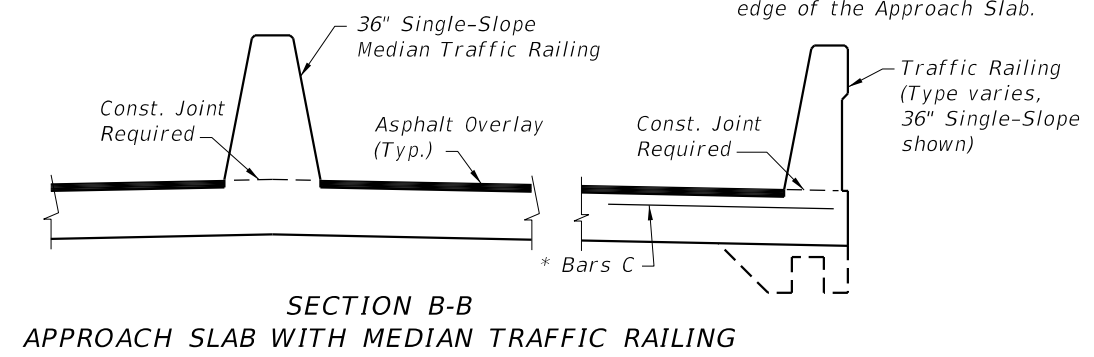
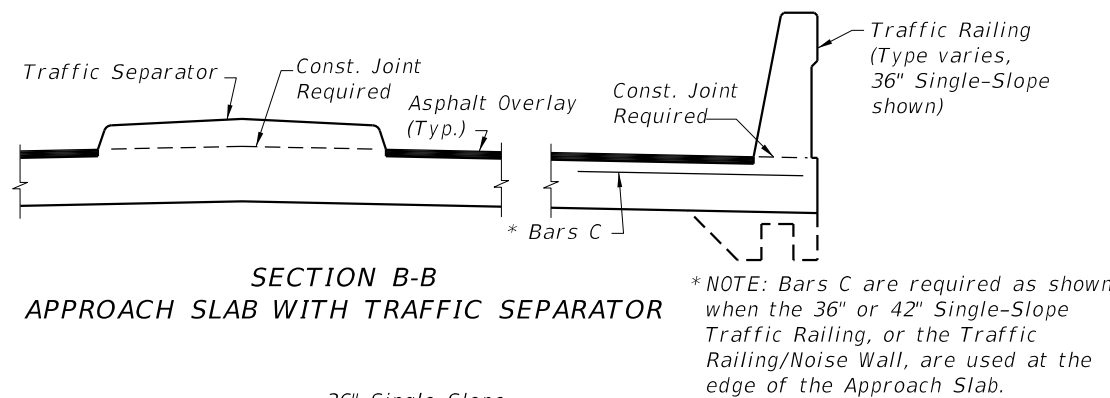
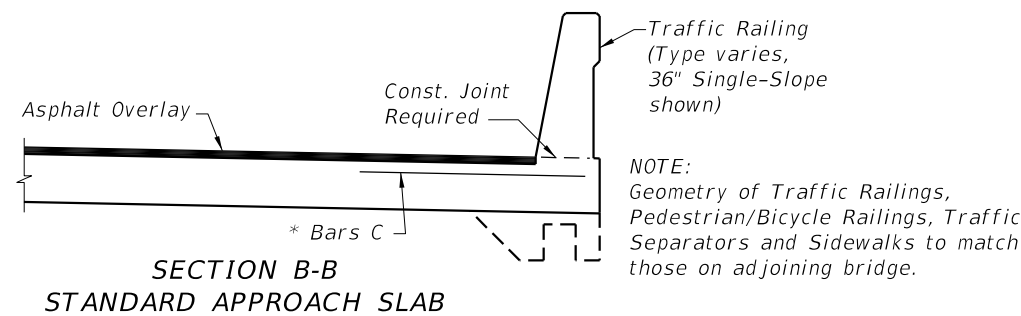
GENERAL NOTES

CROSS REFERENCES:

For Section B-B, Longitudinal Construction Joint Detail and Approach Slab Details see Sheet 2.

10/14/2019 3:39:52 PM

LAST REVISION 11/01/17	DESCRIPTION:	 FY 2020-21 STANDARD PLANS	APPROACH SLABS (30 FT.) (FLEXIBLE PAVEMENT APPROACHES)	INDEX 400-090	SHEET 1 of 2
---------------------------	--------------	--	---	------------------	-----------------



CROSS REFERENCES:
For location of Section B-B and Longitudinal Construction Joint see Sheet 1.

10/14/2019 3:39:53 PM

LAST REVISION 11/01/17	REVISION	DESCRIPTION:		FY 2020-21 STANDARD PLANS	APPROACH SLABS (30 FT.) (FLEXIBLE PAVEMENT APPROACHES)	INDEX 400-090	SHEET 2 of 2
---------------------------	----------	--------------	--	------------------------------	---	------------------	-----------------