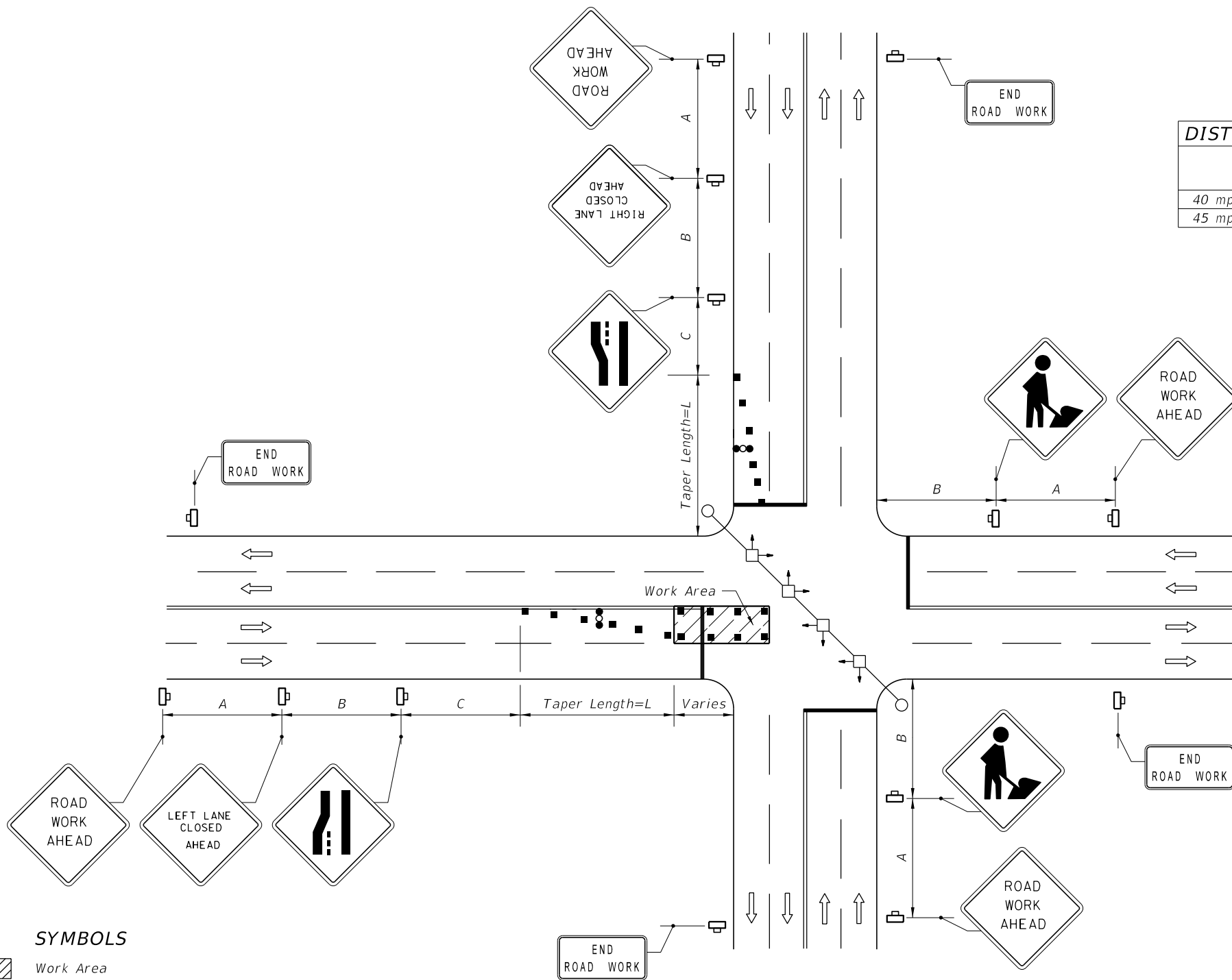


12:35:09 PM  
2/26/2020



Speed	Spacing (ft.)		
	A	B	C
40 mph or less	200	200	200
45 mph	350	350	350

**Table II**  
Taper Length - Merge  
(12' Lateral Transition)

Speed (mph)	L (ft.)	Notes (Merge)
25	125	$L = \frac{WS^2}{60}$
30	180	
35	245	
40	320	L=WS
45	540	

For lateral transitions other than 12', use formula for L shown in the notes column. Where:  
 L = Length of taper in feet  
 W = Width of lateral transition in feet  
 S = Posted speed limit (mph)

**GENERAL NOTES**

1. The WORKERS legend sign may be substituted for the symbol sign.
2. When vehicles in a parking zone block the line of sight to TCZ signs, the signs shall be post mounted and located in accordance with Index 700-101.
3. If the work space extends across a crosswalk, the crosswalk should be closed using the information in Index 102-660.
4. Dual signs are required for divided roadways.
5. Maximum spacing between barricades, vertical panels, cones, tubular markers and drums shall not be greater than 25'.
6. Temporary signal phasing modifications are to be approved by the District Traffic Operations Engineer prior to the beginning of work.
7. For general TCZ requirements and additional information, refer to Index 102-600.

**DURATION NOTES**

1. Signs and arrow board may be omitted if all of the following conditions are met:
  - a. Work operations are 60 minutes or less.
  - b. Speed is 45 mph or less.
  - c. No sight obstructions to vehicles approaching the work area for a distance equal to twice the taper length.
  - d. Vehicles in the work area have high-intensity, rotating, flashing, oscillating, or strobe lights operating.
  - e. Volume and complexity of the roadway has been considered.

- SYMBOLS**
- Work Area
  - Channelizing Device (See Index 102-600)
  - Work Zone Sign
  - Stop Bar
  - Advance Warning Arrow Board
  - Lane Identification + Direction of Traffic

**SIGNALIZED**

**CONDITIONS**

WHERE ANY VEHICLE, EQUIPMENT, WORKERS OR THEIR ACTIVITIES ENCR OACH ON THE PAVEMENT REQUIRING THE CLOSURE OF AT LEAST ONE MEDIAN TRAFFIC LANE.