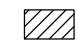

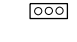

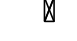

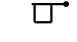
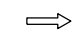


2/26/2020 12:31:53 PM

### GENERAL NOTES

1. Use either portable signals or span wire signals and include two signal faces for each approach.
2. Obtain approval from the District Traffic Operations Engineer for the installation and timing of the signals prior to the signals being placed in operation. Adjust timing based on changing field conditions as approved by the Worksite Traffic Supervisor. Obtain approval from the District Traffic Operations Engineer for any timing changes that are either reoccurring or last longer than 24 hours.
3. For the maximum distance between portable temporary traffic signals do not exceed the distance at which the signals can safely communicate. When the distance between signals is 0.25 miles to 0.50 miles, use a countdown timer on both signals. When the distance between signals is greater than 0.50 miles, use a combination of a pilot vehicle and manually controlled temporary traffic signals.
4. The SIGNAL AHEAD legend sign may be substituted for the symbol sign.
5. Use Type III Barricades to block haul road access when the haul road is not in operation and a flagger/signal operator is not on duty, except when the haul road is an existing properly marked road.
6. Monitor temporary traffic signals by having one or more workers present during operation. In the event of a temporary traffic signal failure, maintain traffic with flaggers.
7. Use Temporary Raised Rumble Strips in accordance with Index 102-603.

### SYMBOLS

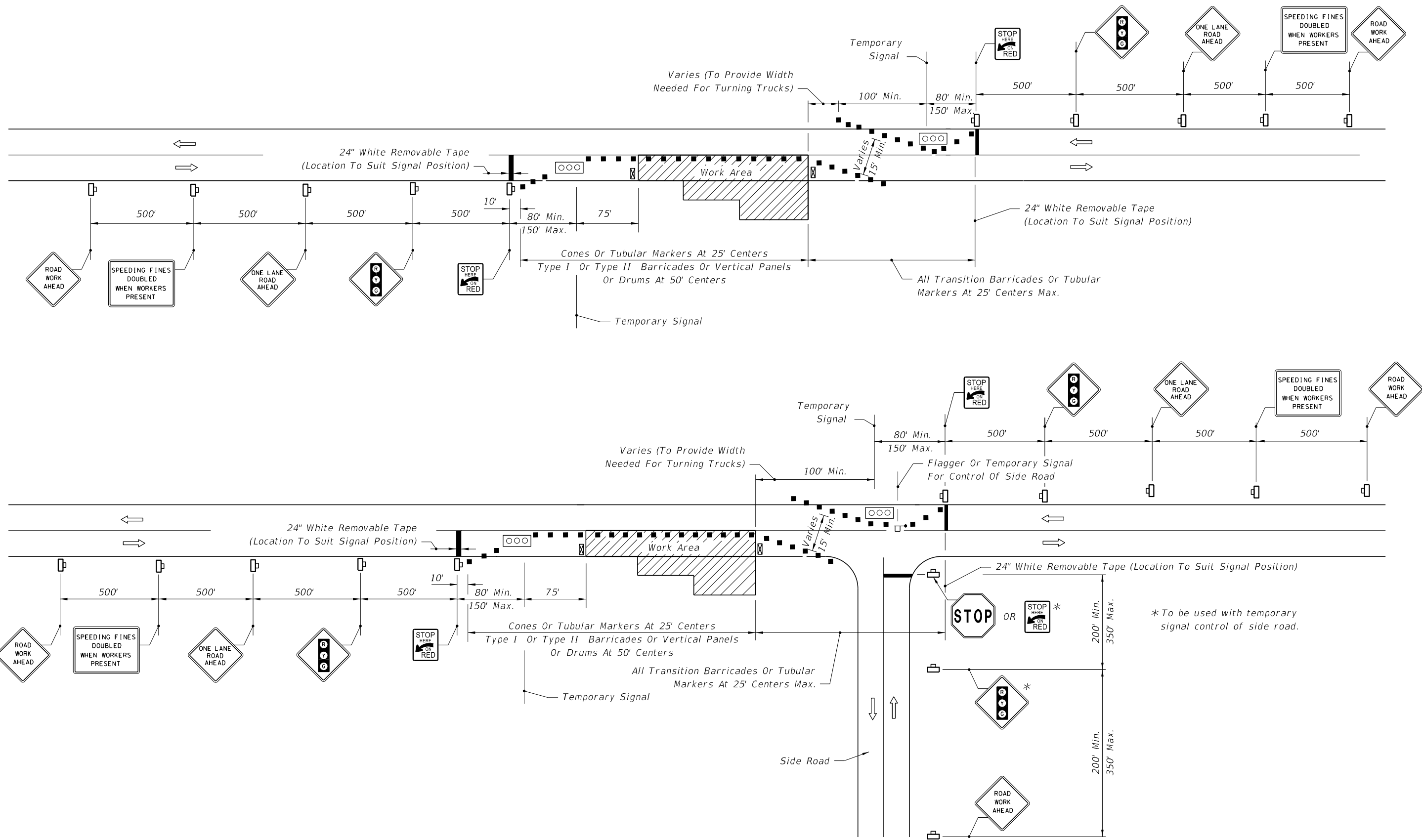
-  Work Area
-  Work Zone Sign
-  Temporary Traffic Signal
-  Channelizing Device (See Index 102-600)
-  Type III Barricade
-  Stop Bar
-  Flagger
-  Lane Identification + Direction of Traffic

### CONDITIONS

WHERE ANY VEHICLE, EQUIPMENT, WORKERS OR THEIR ACTIVITIES WILL ENCROACH ON ONE LANE OR MOMENTARILY ENCROACH ON BOTH LANES OF A TWO-LANE TWO-WAY ROADWAY AND TRAFFIC SIGNALS ARE NEEDED.

LAST REVISION 11/01/17	REVISION DESCRIPTION:	 FY 2020-21 STANDARD PLANS	TWO-LANE, TWO-WAY, WORK WITHIN THE TRAVEL WAY - SIGNAL CONTROL	INDEX 102-606	SHEET 1 of 4
---------------------------	-----------------------	--	---	------------------	-----------------

2/26/2020 12:31:55 PM



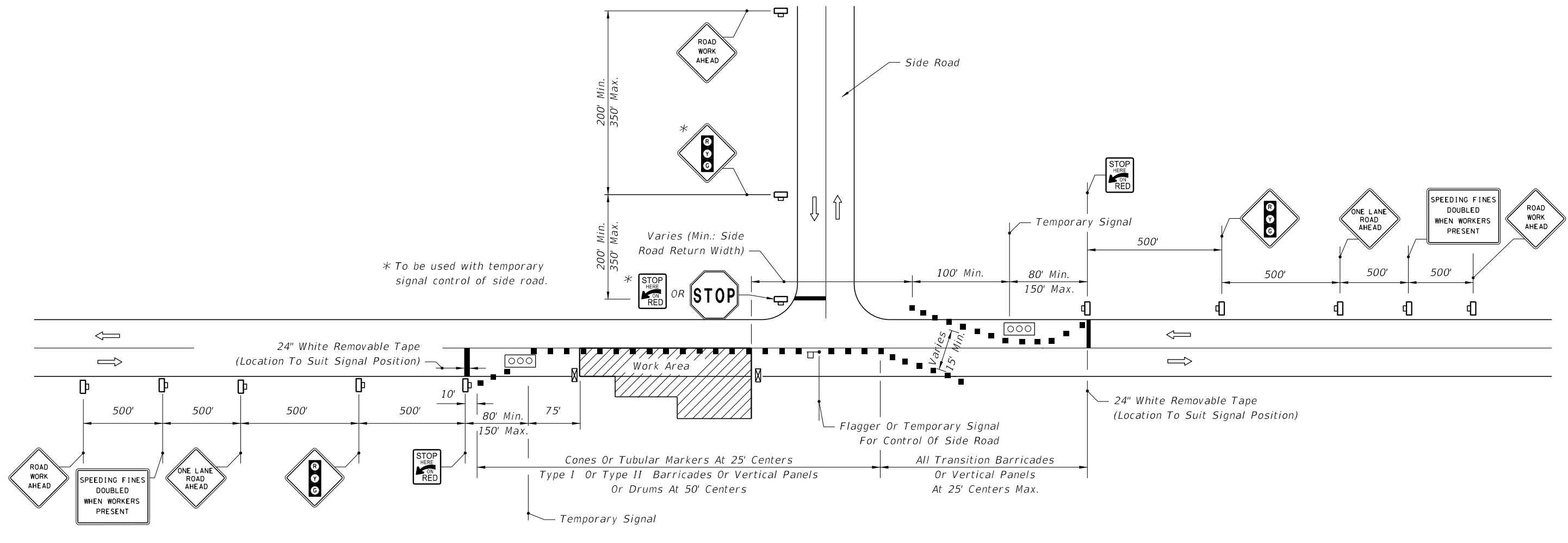
**SINGLE LANE CLOSURE • ROADWAY AND BRIDGES ALL LENGTHS**

LAST REVISION 11/01/17	DESCRIPTION:
---------------------------	--------------

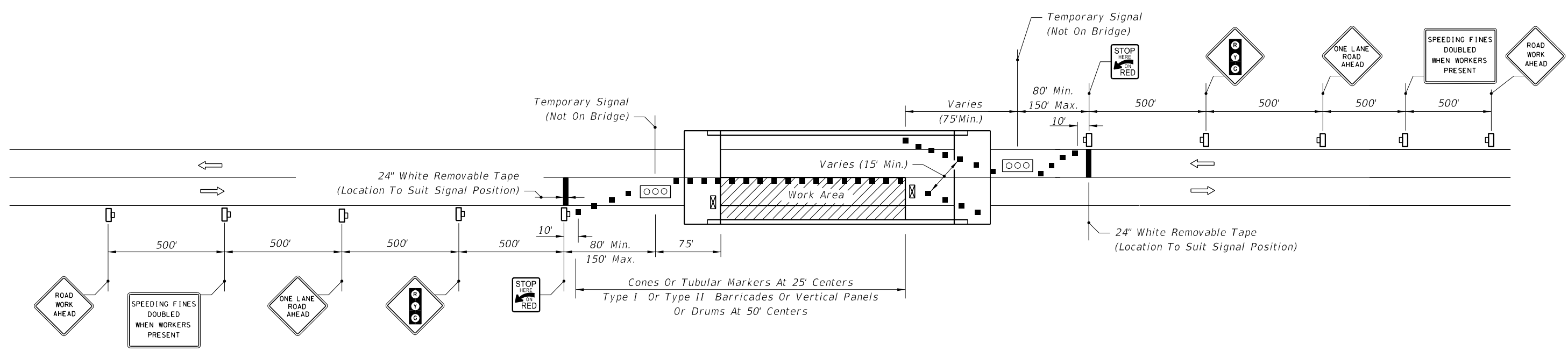

**FY 2020-21  
STANDARD PLANS**

**TWO-LANE, TWO-WAY, WORK WITHIN  
THE TRAVEL WAY - SIGNAL CONTROL**

INDEX 102-606	SHEET 2 of 4
------------------	-----------------




**SINGLE LANE CLOSURE • ROADWAY AND BRIDGES ALL LENGTHS**

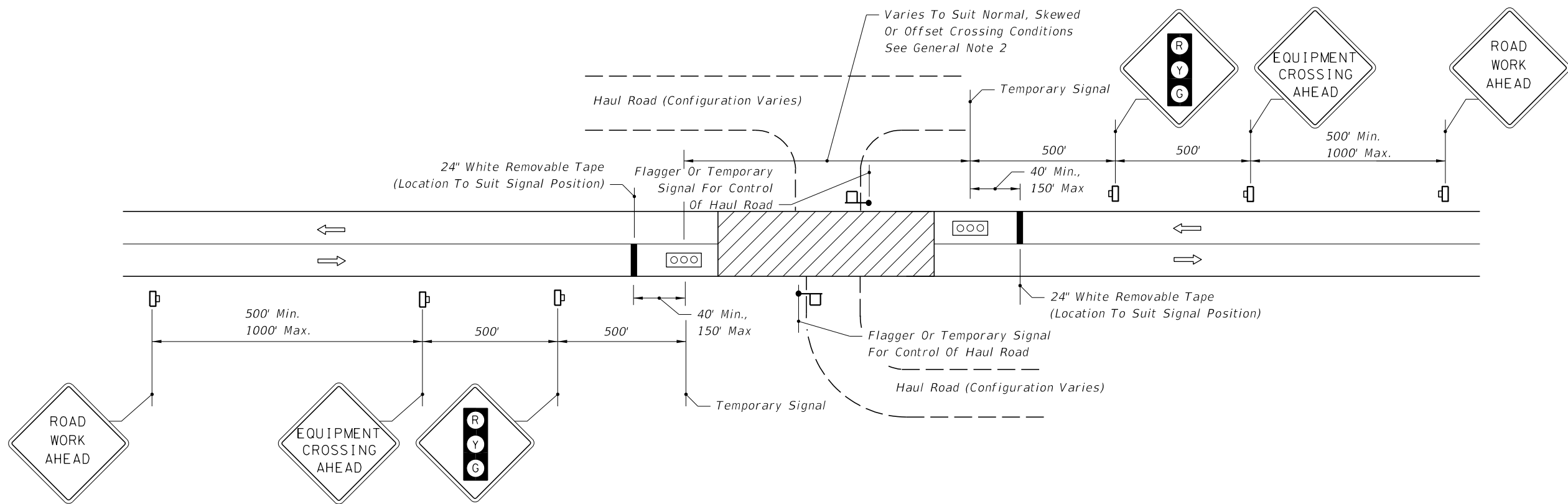


**SINGLE LANE CLOSURE • SHORT BRIDGES**

2/26/2020 12:31:55 PM

LAST REVISION 11/01/17	REVISION	DESCRIPTION:	 FY 2020-21 STANDARD PLANS	TWO-LANE, TWO-WAY, WORK WITHIN THE TRAVEL WAY - SIGNAL CONTROL	INDEX 102-606	SHEET 3 of 4
---------------------------	----------	--------------	--	---	------------------	-----------------

2/26/2020 12:31:56 PM



MOMENTARY ROADWAY CLOSURE • HAUL ROUTE CROSSING

LAST REVISION 11/01/17

REVISION

DESCRIPTION:



FY 2020-21  
STANDARD PLANS

TWO-LANE, TWO-WAY, WORK WITHIN  
THE TRAVEL WAY - SIGNAL CONTROL

INDEX  
102-606

SHEET  
4 of 4