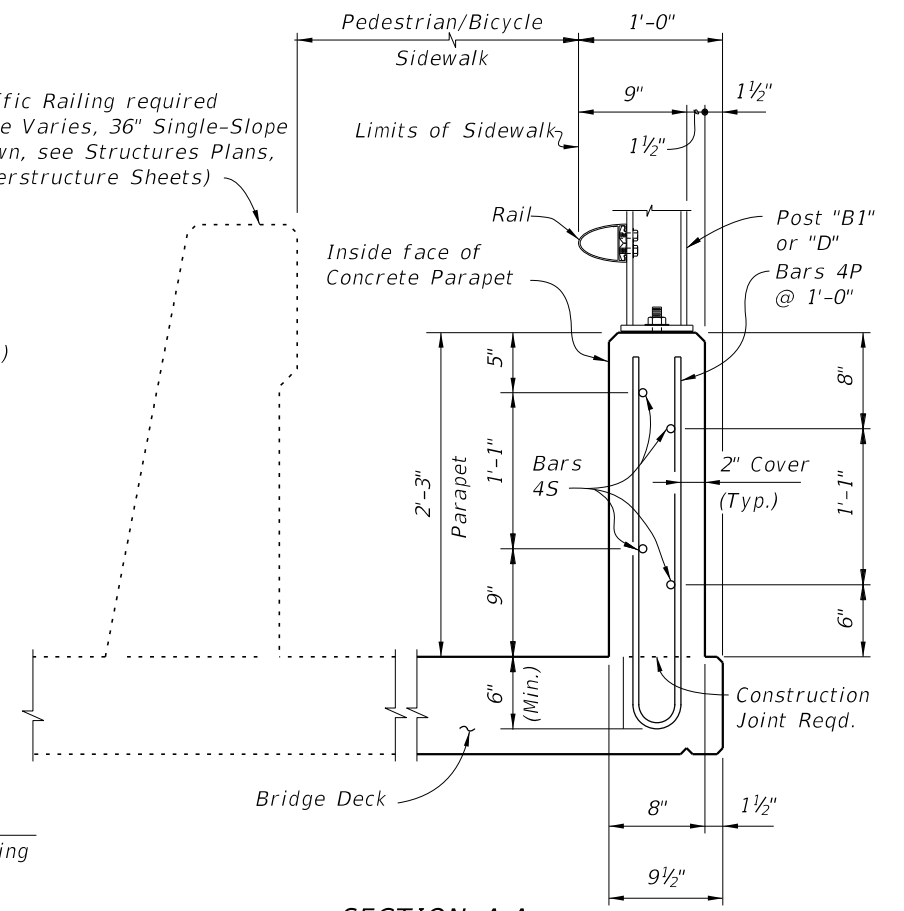
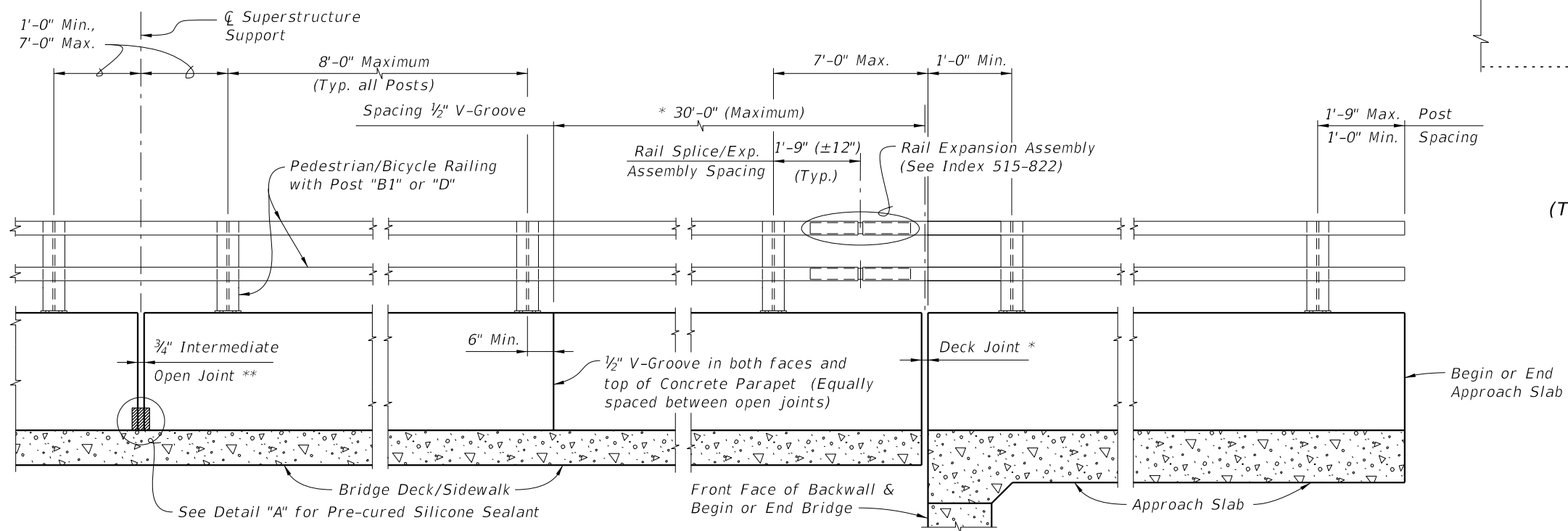


PLAN
(Rails, Posts & Reinforcing Steel not shown for clarity)

Traffic Railing required
(Type Varies, 36" Single-Slope
shown, see Structures Plans,
Superstructure Sheets)



SECTION A-A
(Typical Section Thru Bridge Deck Shown,
Section Thru Approach Slab Similar)
Bars P1 shown, Bars P2 similar



ELEVATION OF INSIDE FACE OF RAILING
(Reinforcing Steel not shown for clarity)

PEDESTRIAN/BICYCLE RAILING NOTES:

- CONCRETE PARAPET:** Concrete parapet shall be placed vertical and top surface shall be level transversely.
- RAIL AND POST DETAILS:** For Rail, Post, Rail Splice/Expansion Assembly fabrication and installation details see Index 515-022.
- BRIDGE FENCING:** For Bridge Fencing see Index 550-010 thru 550-013 in lieu of Posts and Rails on Index 515-022.
- PAYMENT:** Concrete parapet shall be paid for under the contract unit price for 27" Concrete Parapet (Pedestrian/Bicycle), LF, and Rails shall be paid for under Bullet Railings, LF.

* See Structures Plans, Superstructure Sheets for actual dimensions and joint orientation. Open Parapet Joints at Deck Expansion Joint locations shall match the dimension of the Deck Joint. For treatment of Railings on skewed bridges see Index 521-427. Deck Joint at Begin Bridge or End Bridge shown. Deck Joint at \bar{C} Pier or Intermediate Bent similar.

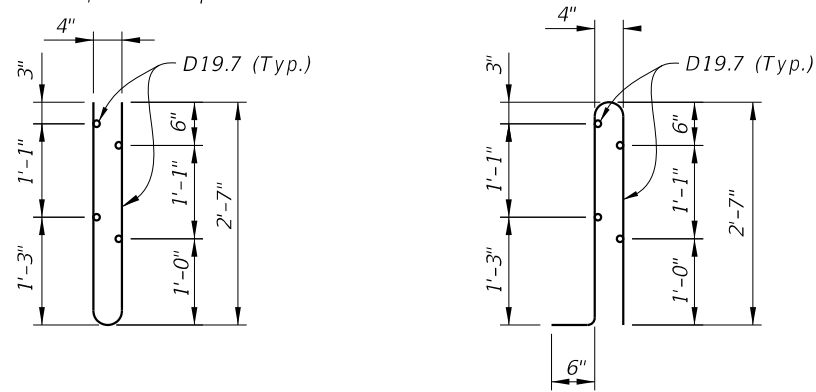
** $\frac{3}{4}$ " Intermediate Open Joints shall be provided at locations coinciding with $\frac{3}{4}$ " Joints for the Traffic Railing.

10/23/2018 12:14:06 PM

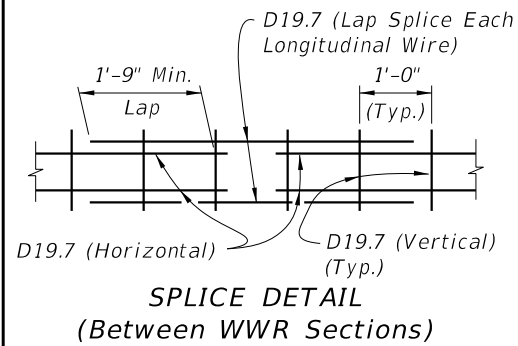
LAST REVISION 11/01/18	REVISION	DESCRIPTION:		FY 2019-20 STANDARD PLANS	27" CONCRETE PARAPET WITH PEDESTRIAN/BICYCLE BULLET RAILING	INDEX 521-820	SHEET 1 of 2
---------------------------	----------	--------------	--	--------------------------------------	--	-------------------------	------------------------

ALTERNATE REINFORCING (WELDED WIRE REINF.) DETAILS

NOTE: Place wire panels to minimize the end overhang. End Overhangs greater than 4¾" are not permitted.



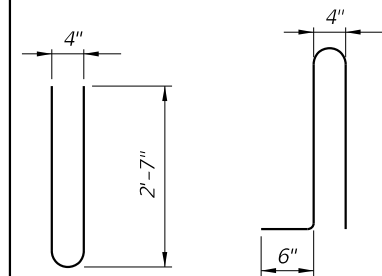
===== **WELDED WIRE REINFORCEMENT (WWR)** =====



CONVENTIONAL REINFORCING STEEL BENDING DIAGRAMS

BILL OF REINFORCING STEEL

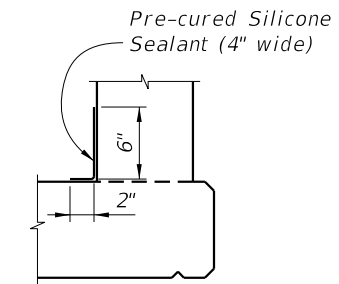
MARK	SIZE	LENGTH
P1	4	5'-6"
P2	4	6'-0"
S	4	As Reqd.



BAR 4P1 **BAR 4P2**

As Reqd.

BAR 4S



DETAIL "A" - SECTION AT INTERMEDIATE OPEN JOINT

INTERMEDIATE JOINT SEAL NOTE:

1. At Intermediate Open Joints, seal the lower 6" portion of the open joint with Pre-cured Silicone Sealant meeting the requirements of Specification Section 932.
2. Apply sealant prior to any Class V finish coating and remove all curing compound and loose material from the surface prior to application of bonding agent.
3. The cost of the Pre-cured Silicone Sealant shall be included in the Contract Unit Price for the Concrete Parapet.

REINFORCING STEEL NOTES:

1. All bar dimensions in the bending diagrams are out to out.
2. The reinforcement for the parapet on a retaining wall shall be the same as detailed above for a 8" deck.
3. All reinforcing steel at the open joints shall have a 2" minimum cover.
4. Bars 4S may be continuous or spliced at the construction joints. Bar splices for Bars 4S shall be a minimum of 1'-8".
5. Bars 4P2 may be used in lieu of Bars 4P1.
6. At the option of the Contractor deformed WWR may be used in lieu of all Bars 4P or 4P2 and 4S.

ITEM	UNIT	QUANTITY
Concrete	CY/LF	0.056
Reinforcing Steel (P1 & S)	LB/FT	6.35
Reinforcing Steel (P2 & S)	LB/FT	6.68

(The above quantities are based on a deck with a 2% cross slope)

10/23/2018 12:14:06 PM

LAST REVISION	DESCRIPTION:
11/01/18	


FY 2019-20
STANDARD PLANS

27" CONCRETE PARAPET WITH
PEDESTRIAN/BICYCLE BULLET RAILING

INDEX	SHEET
521-820	2 of 2