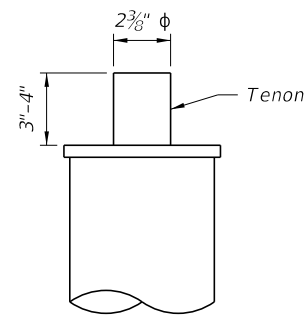
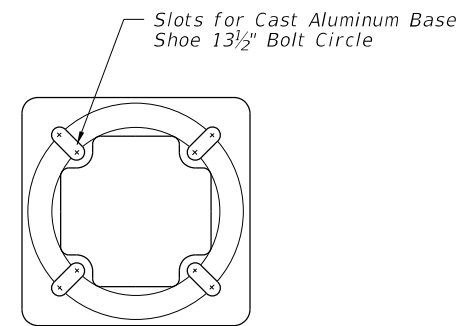


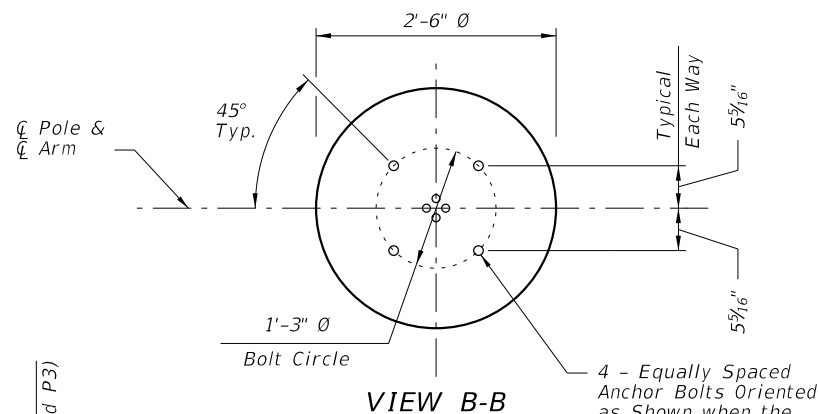
SECTION C-C



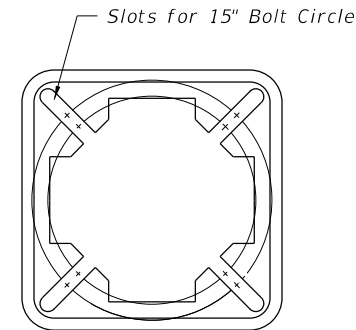
TOP MOUNT TENON



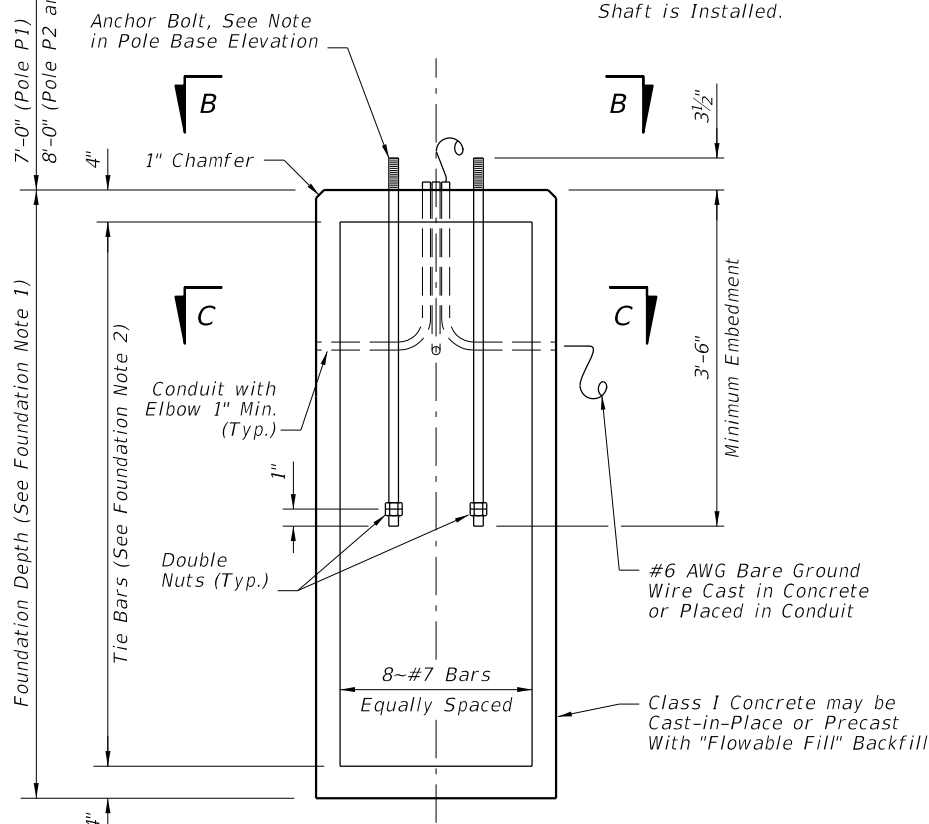
TOP VIEW TRANSFORMER BASE



VIEW B-B



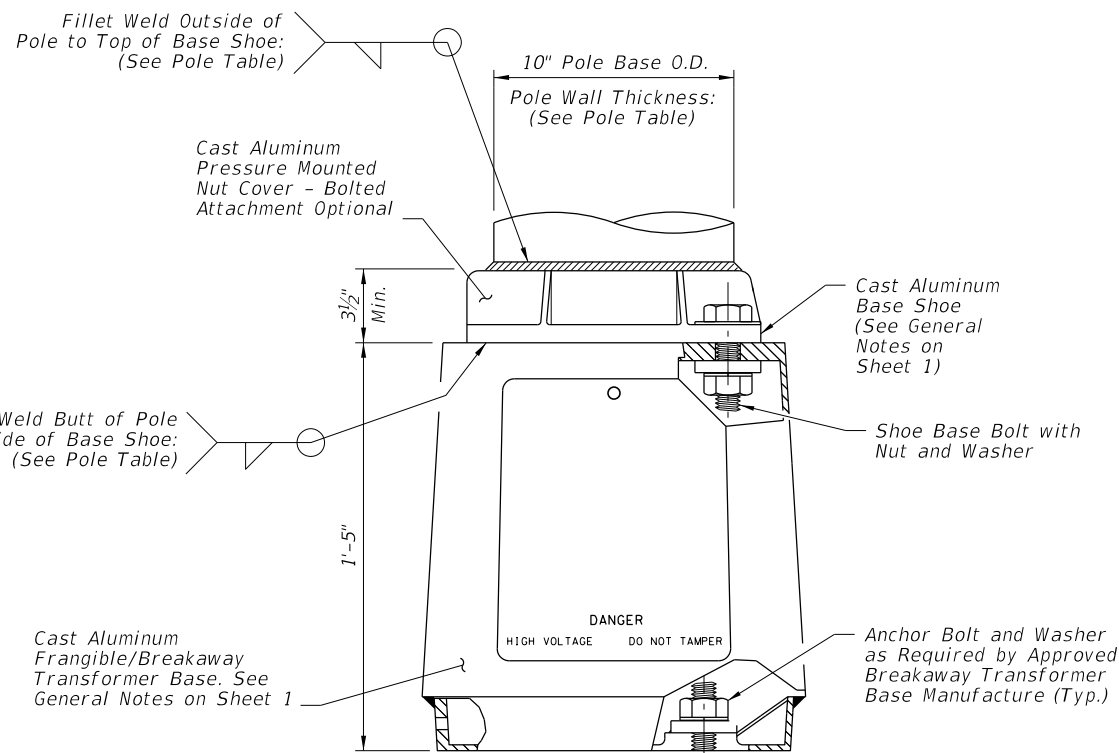
BOTTOM VIEW TRANSFORMER BASE



FOUNDATION NOTES:

1. Depths shown are for slopes flatter than 1:4, for slopes 1:2 or flatter, add 2'-6" to foundation depths shown.
2. Foundation Tie Bars: #4 Tie Bars @ 12" centers (max.) or D10 (or W10) spiral @ 6" pitch, 3 flat turns top and 1 flat turn bottom.

FOUNDATION



POLE BASE ELEVATION

ARM-POLE TABLE					
FOR STANDARD ALUMINUM LIGHT POLES WITH ARM					
Assembly Height (ft)	Wind Speed and Arm Lengths (ft)				
	120 mph 8, 10, 12, 15	140 mph 8, 10, 12	160 mph 15	8, 10	12, 15
30	A1-P1	A1-P1	A2-P1	A1-P1	A2-P1
35				A1-P2	A2-P2
40				A1-P3	A2-P3
45	A1-P2	A1-P2	A2-P2	A1-P1	A2-P1
50				A1-P2	A2-P2

ARM POLE NOTES:

1. See ARM SECTION detail on Sheet 3 for all A1 and A2 Values.
2. See Pole Table for all P1, P2, and P3 values.
3. For Median Barrier Mounted Pole, Use Arm A1.

POLE TABLE			
Pole	Pole Wall Thickness	Top of Base Shoe Weld	Inside of Base Shoe Weld
P1	0.156	3/16"	5/32"
P2	0.250	1/4"	1/4"
P3	0.313	5/16"	5/16"

POLE NOTES:

1. Pole wall thicknesses shown are nominal and must be within the Aluminum Association tolerances.
2. Thicker walls are permitted and tapered walls may be used in accordance with the minimum Aluminum Association thicknesses.

TOP MOUNT POLE TABLE			
FOR STANDARD ALUMINUM LIGHT POLES WITH TOP MOUNT			
Assembly Height (ft)	Wind Speed and Arm Lengths (ft)		
	120 mph	140 mph	160 mph
30	Pole P1	Pole P1	Pole P1
35			Pole P2
40			Pole P2
45	Pole P2	Pole P2	Pole P2
50			Pole P2

CLARIFIED NOTE

POLE AND BASE DETAILS FOR ROADWAY ALUMINUM LIGHT POLE

10/30/2018 3:07:11 PM

LAST REVISION 04/03/18	DESCRIPTION:		FY 2019-20 STANDARD PLANS	STANDARD ALUMINUM LIGHTING	INDEX 715-002	SHEET 4 of 8
---------------------------	--------------	--	------------------------------	----------------------------	------------------	-----------------