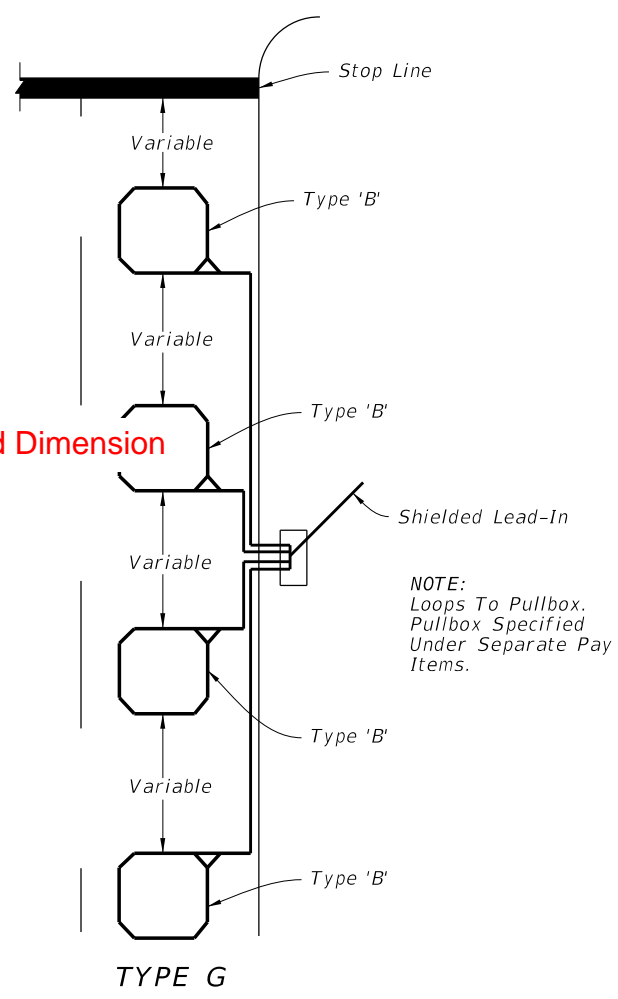


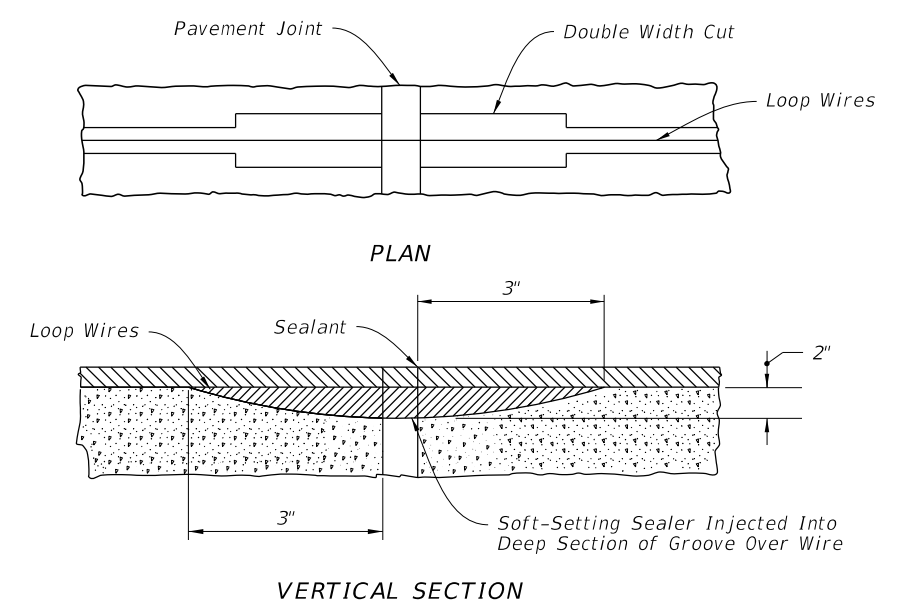
NOTE:
Loop conductors must follow saw-cut to bottom forming slack section at joint.

LOOP TYPES

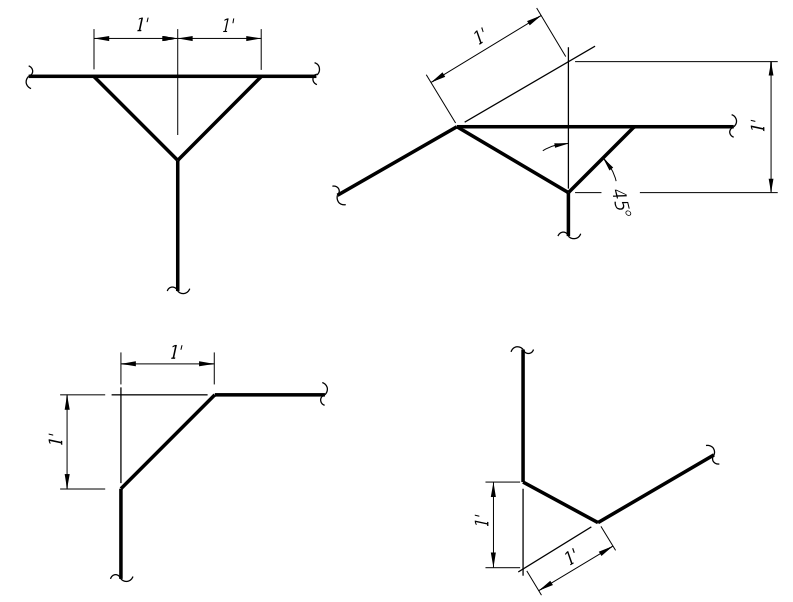


NOTE:
Loops To Pullbox.
Pullbox Specified
Under Separate Pay
Items.

- NOTES:**
1. The number of "Turns" indicated at the specified point on the loop refers to the number of passes of loop wires which are placed in the saw-cut forming the complete loop.
 2. Loop types or details not drawn to scale.
 3. Loop Types are centered in a single lane except Type E which is centered on two lanes.
 4. The number of individual loops in the Type G loop may vary up to a maximum of four (4).
 5. Lead-in may be connected to either end of loop.
 6. When shown in the Plans, the leading edge of loop Types A, C, D, & F may extend past the stop line a maximum of 10' and the length of these loops may be extended to a maximum of 60'.
 7. Do not install loop lead-in wires in the same pull box with signal power cable.



CONCRETE PAVEMENT EXPANSION JOINTS



LOOP CORNER AND LEAD-IN DETAILS

LOOP TYPES, EXPANSION JOINTS, AND DETAILS

10/18/2018 12:37:04 PM

LAST REVISION 11/01/18	REVISION	DESCRIPTION:
---------------------------	----------	--------------


**FY 2019-20
STANDARD PLANS**

VEHICLE LOOP INSTALLATION DETAILS

INDEX 660-001	SHEET 2 of 2
------------------	-----------------