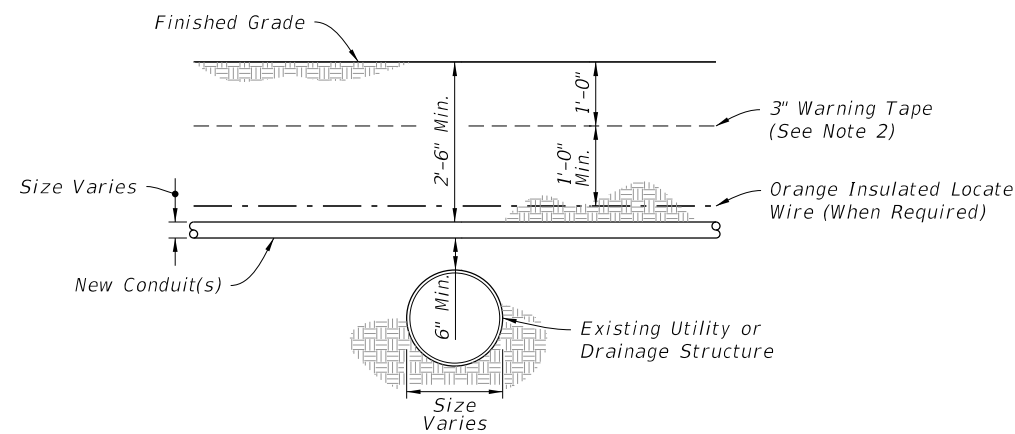
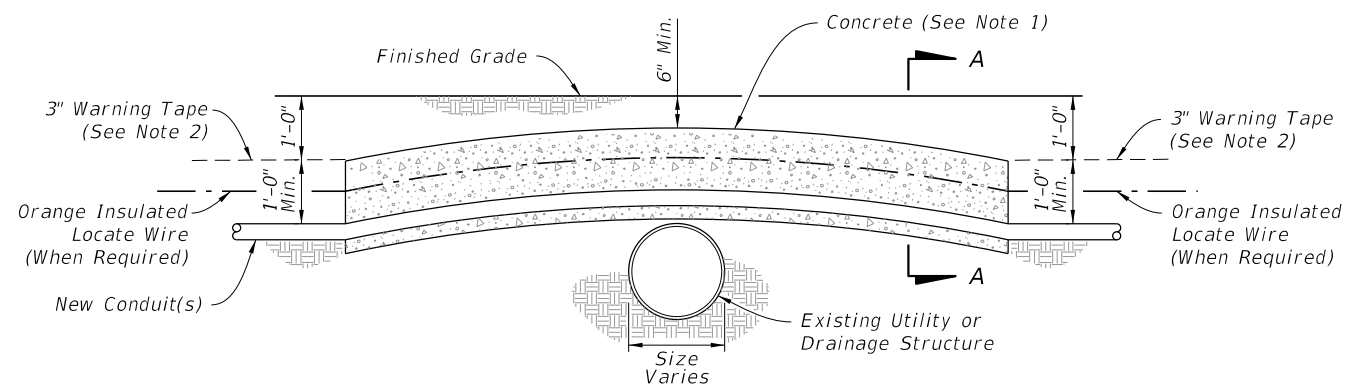


BELOW EXISTING

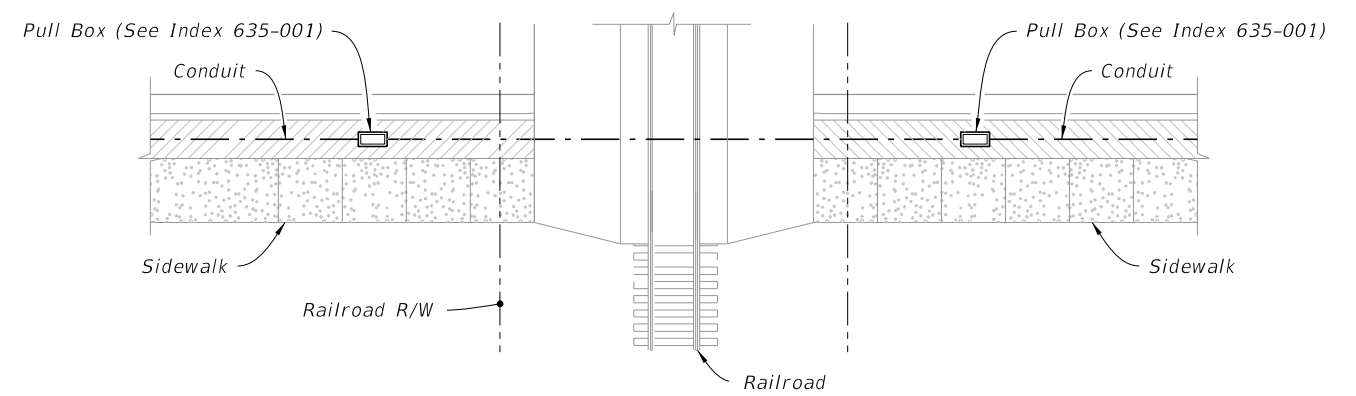


ABOVE EXISTING - DEPTH 2'-6" OR GREATER

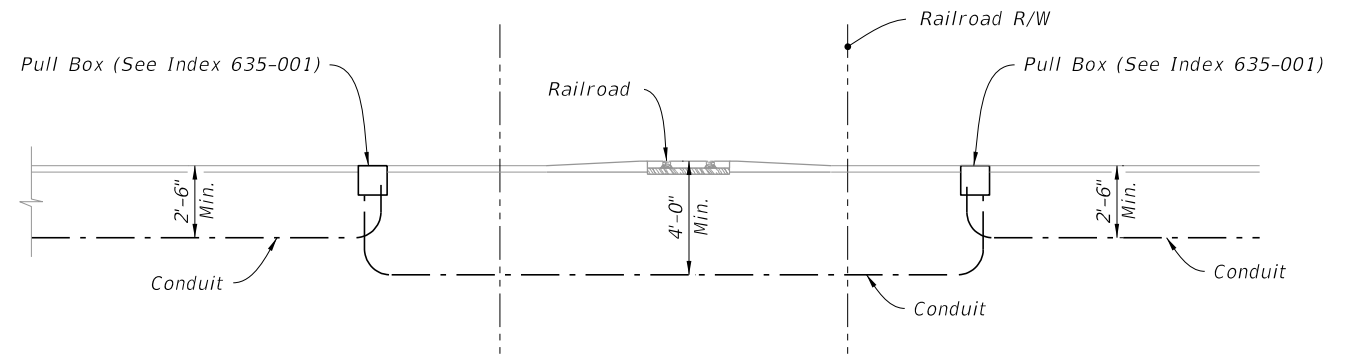


ABOVE EXISTING - DEPTH 2'-6" OR LESS

PLACEMENT ACROSS EXISTING DRAINAGE PIPES OR UTILITIES



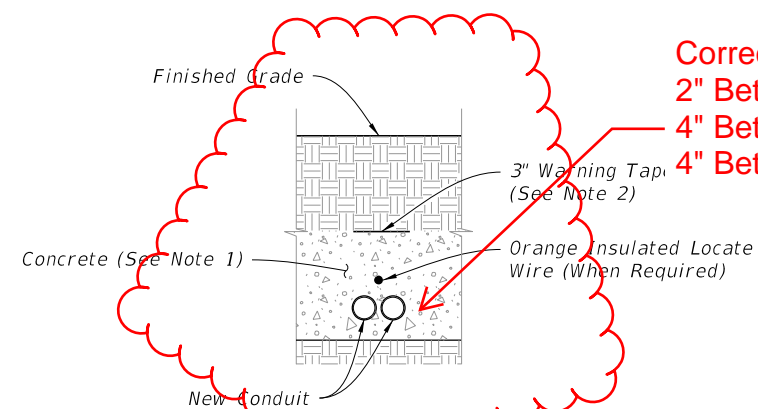
PLAN



PLACEMENT UNDER RAILROAD

NOTES:

- Where conduits are to be installed over existing utilities (e.g., drainage pipes) which are not encased in concrete, the conduit must be installed at a depth of 1'-6" or greater, and the new conduit is not encased in concrete.



SECTION A-A

Corrected Missing Dimensions...  
 2" Between Conduit  
 4" Between Side and Conduit  
 4" Between Bottom and Conduit

10/18/2018 11:48:36 AM

LAST REVISION 11/01/18	DESCRIPTION:		FY 2019-20 STANDARD PLANS	CONDUIT INSTALLATION DETAILS	INDEX 630-001	SHEET 4 of 4
REVISION						