

## **Index 455-400 Precast Concrete Sheet Pile Wall (Conventional)**

### **Design Criteria**

***AASHTO LRFD Bridge Design Specifications; Structures Design Guidelines (SDG)***

### **Design Assumptions and Limitations**

These piles are typically jettied into place rather than driven like a bearing pile. If shallow rock formations exist within the wall limits, other wall types must be considered.

A cast-in-place reinforced concrete bulkhead cap is required to structurally tie the tops of the concrete sheet piles together and to provide corrosion protection for the reinforcing and prestressing steel that extend from the tops of the piles.

These piles can be used for cantilevered walls or tied-back walls. Project specific designs and details are required for tie-backs. If the length of piles required for a cantilevered wall exceeds the limits shown on the standard drawings, consider using tie-backs.

These piles can be used in all environments with the appropriate concrete admixtures.

The grouted keyway used in combination with plastic filter fabric (the limits of both are defined by dimension "X") are assumed to not be watertight. Thus they contain the soil behind the wall while still allowing groundwater behind the wall to weep through. No other separate weep holes are generally required. The bottom of the "X" dimension is required to be 1'-8" below the mud line.

The tip elevation of piles shall be determined by the Geotechnical Engineer.

See additional information on the Standard.

### **Plan Content Requirements**

In the Structures or Roadway Plans:

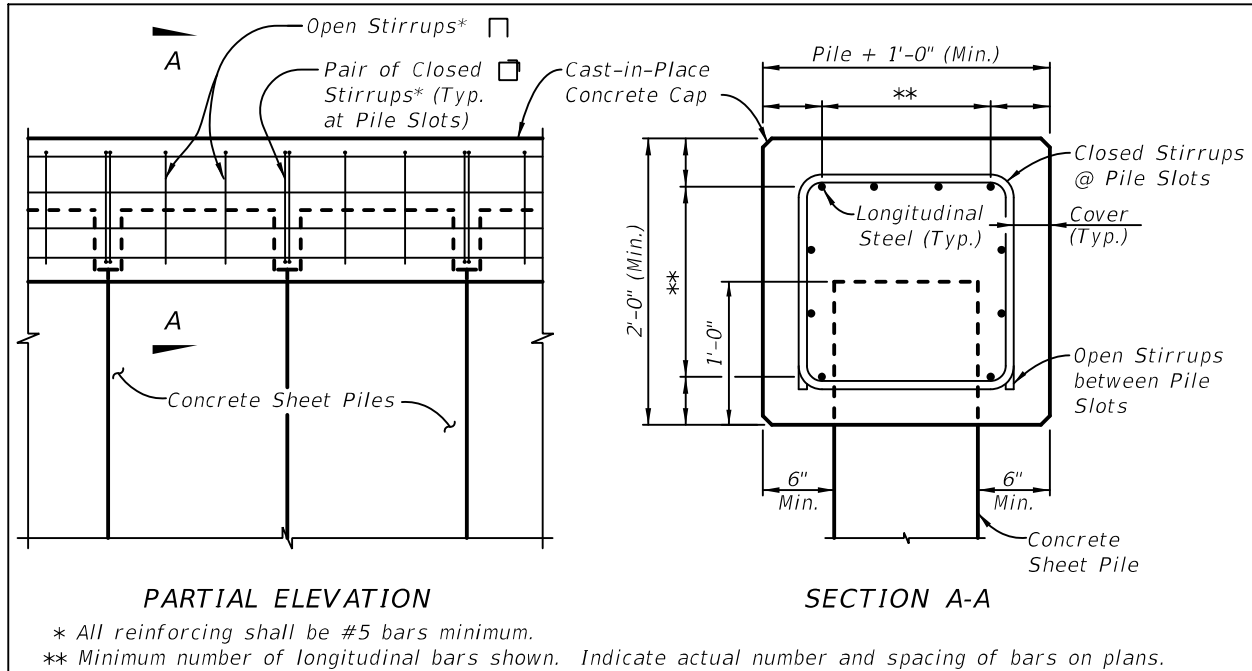
Prepare Wall Control Drawings and related drawings as specified in **SDM** Chapter 19 and **FDM** 262, and include them in the plans. Use combinations of straight and corner piles to accommodate project specific geometric requirements.

Show one Starter Pile location for a given wall. In the Elevation View, show the wall construction sequence proceeding away from the Starter Pile by locating the 11" by 11" corner clip on each Typical Pile on the side farthest away from the Starter Pile. Consider necessary tie-ins with adjacent structures and other boundary restrictions when selecting the Starter Pile location.

Prepare project specific cast-in-place concrete bulkhead cap, tie-back and utility accommodation details and include them in the plans. See Figure 1 for typical cap details. In the Materials Note on the General Notes Sheet, specify the concrete class for

the cast-in-place cap in accordance with the retaining wall environment classification. See **SDG 1.4**.

**Figure 1 Typical Cap Details**



Complete the following "Concrete Sheet Pile Wall with Prestressed Soil Anchors Data Table", "Concrete Sheet Pile Wall with Dead Man Anchors Data Table" or "Concrete Sheet Pile Wall, Cantilever Data Table" as applicable and include it on the supplemental sheets. Complete the Notes and add/modify/delete as necessary. See Introduction I.3 for more information regarding use of Data Tables.

CONCRETE SHEET PILE WALL WITH PRESTRESSED SOIL ANCHORS DATA TABLE																		Table Date 07-01-12		
CONSTRUCTION INFORMATION															DESIGN PARAMETERS					
WALL LOCATION		WALL NO.	CONCRETE SHEET PILE FABRICATION						ANCHORS						TOP OF WALL ELEV. (ft)	SOIL ELEVATION		WATER ELEVATION		FACTORED DESIGN SURCHARGE LOAD (psf)
			TYPE (See Detail A)	NUMBER REQUIRED	PILE LENGTH L (ft)	PILE THICKNESS T (in)	GROOVE LENGTH X (ft)	CORNER ANGLE Ø (degrees)	MAXIMUM ANCHOR SPACING (ft)	FACTORED ANCHOR LOAD (kips/ft)	SERVICE ANCHOR LOAD (kips/ft)	MINIMUM UNBONDED LENGTH (ft)	INSTALLATION ANGLE BELOW HORIZONTAL (degrees)	MINIMUM WALL TIP ELEVATION (ft)		* FRONT OF WALL (ft)	BACK OF WALL (ft)	FRONT OF WALL (ft)	BACK OF WALL (ft)	
STATION (begin to end)	OFFSET (ft)																			

\* Minimum of Design Ground Surface or Design Scour Depth.

- NOTES:**
1. Work the Data Table with Index 455-400 and Specification Section 451.
  2. Factored Anchor Design Load (kips) = Factored Anchor Load (kips/ft) x Anchor Spacing (ft).
  3. Environmental Classification is \_\_\_\_\_
  4. Concrete for cast-in-place retaining wall caps shall be Class \_\_\_\_\_ (f'c = \_\_\_\_\_ psi), \_\_\_\_\_ (with/without) silica fume, metakaolin or ultrafine fly ash.

CONCRETE SHEET PILE WALL WITH DEAD MAN ANCHORS DATA TABLE													Table Date 07-01-12				
CONSTRUCTION INFORMATION											DESIGN PARAMETERS						
WALL LOCATION		WALL NO.	CONCRETE SHEET PILE FABRICATION						ANCHORS		MINIMUM WALL TIP ELEVATION (ft)	TOP OF WALL ELEV. (ft)	SOIL ELEVATION		WATER ELEVATION		FACTORED DESIGN SURCHARGE LOAD (psf)
			TYPE (See Detail A)	NUMBER REQUIRED	PILE LENGTH L (ft)	PILE THICKNESS T (in)	GROOVE LENGTH X (ft)	CORNER ANGLE $\theta$ (degrees)	ANCHOR BAR SPACING (ft)	ANCHOR BAR DIAMETER (in)			* FRONT OF WALL (ft)	BACK OF WALL (ft)	FRONT OF WALL (ft)	BACK OF WALL (ft)	
STATION (begin to end)	OFFSET (ft)																

\* Minimum of Design Ground Surface or Design Scour Depth.

- NOTES:**
1. Work the Data Table with Index 455-400.
  2. Environmental Classification is \_\_\_\_\_
  3. Concrete for cast-in-place retaining wall caps shall be Class \_\_\_\_\_ (f'c = \_\_\_\_\_ psi), \_\_\_\_\_ (with/without) silica fume, metakaolin or ultrafine fly ash.

CONCRETE SHEET PILE WALL, CANTILEVER DATA TABLE													Table Date 07-01-12		
CONSTRUCTION INFORMATION											DESIGN PARAMETERS				
WALL LOCATION		WALL NO.	TYPE (See Detail A)	NUMBER REQUIRED	PILE LENGTH L (ft)	PILE THICKNESS T (in)	GROOVE LENGTH X (ft)	CORNER ANGLE $\theta$ (degrees)	MINIMUM WALL TIP ELEVATION (ft)	WALL TOP ELEV. (ft)	SOIL ELEVATION		WATER ELEVATION		DESIGN LIVE LOAD (psf)
STATION (begin to end)	OFFSET (ft)										FRONT OF WALL (ft)	BACK OF WALL (ft)	FRONT OF WALL (ft)	BACK OF WALL (ft)	

**NOTES:**  
 1. Work the Data Table with Index 455-400.  
 2. Environmental Classification is \_\_\_\_\_  
 3. Concrete for cast-in-place retaining wall cap shall be Class \_\_\_\_\_ (f'c = \_\_\_\_\_ psi), \_\_\_\_\_ (with/without) silica fume, metakaolin or ultrafine fly ash.

**Payment**

<b>Item number</b>	<b>Item Description</b>	<b>Unit Measure</b>
400-2-8	Concrete Class II, Bulkhead	CY
400-3-8	Concrete Class III, Bulkhead	CY
400-4-8	Concrete Class IV, Bulkhead	CY
415-1-8	Reinforcing Steel - Bulkhead	LB
415-2-8	Reinforcing Steel - Stainless, Bulkhead	LB
451-70-AA	Prestressed Soil Anchor	EA
455-14-AA	Concrete Sheet Piling	LF
455-87	Anchor Bar, Steel	EA