

PRESTRESSED CONCRETE
PEDESTAL POLE

PRESTRESSED CONCRETE
STRAIN POLE

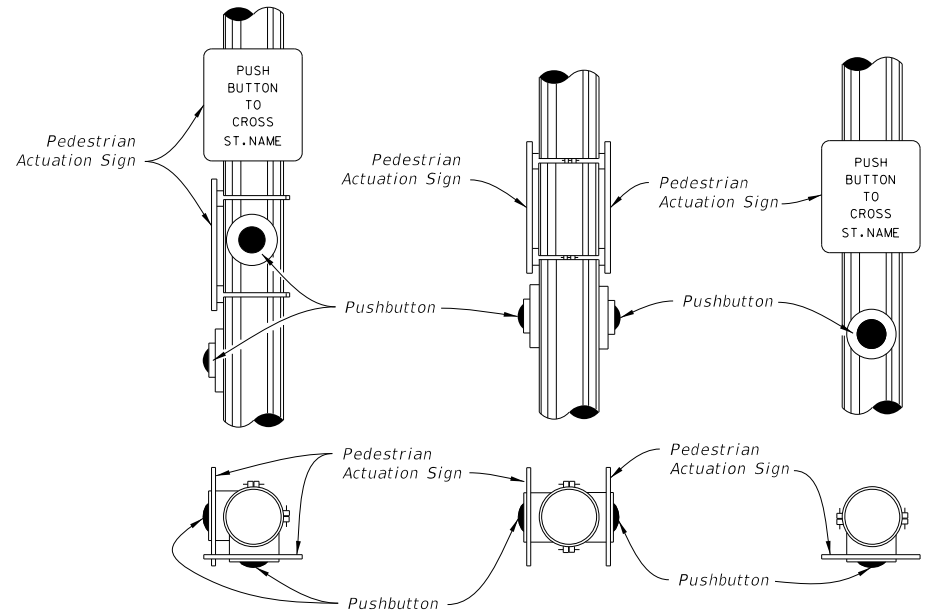
STEEL STRAIN POLE

GALVANIZED POLE

ALUMINIUM POLE

PEDESTAL

PUSHBUTTON PEDESTRIAN DETECTORS



DETAIL "A"

NOTES:

1. Mount Signs above the detectors. See Index 700-102 or MUTCD for sign details.
2. Position the pedestrian pushbutton to clearly indicate which crosswalk signal is actuated by each pushbutton.
3. Mount pushbuttons and Signs in accordance with Specification 665.
4. Install all grounding per Specification 620.
5. Pushbutton mounting height shown above is taken at the center of the actuation switch.

10/16/2017 10:35:35 AM

LAST REVISION 11/01/17	REVISION	DESCRIPTION:		FY 2018-19 STANDARD PLANS	PEDESTRIAN DETECTOR ASSEMBLY INSTALLATION DETAILS	INDEX 665-001	SHEET 1 of 1
---------------------------	----------	--------------	--	------------------------------	--	------------------	-----------------