

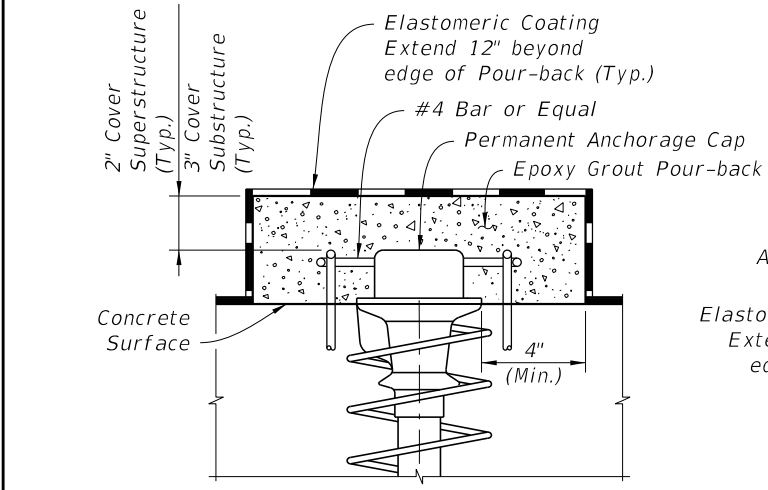
**TYPE 1**

**TYPE 2**

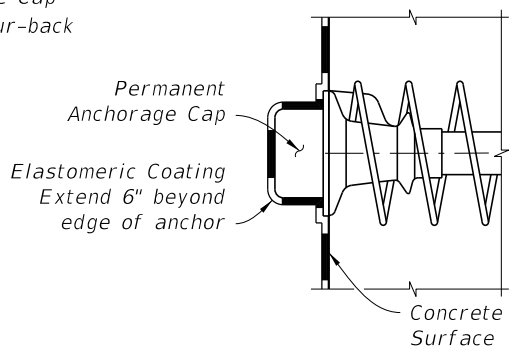
**TYPE 3A**

**TYPE 3B**

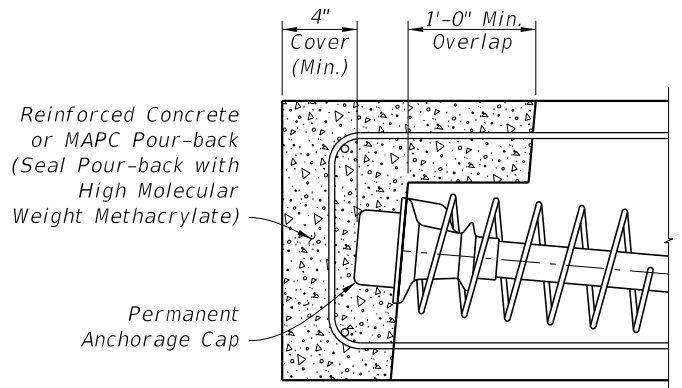
Epoxy Grout Pour-back placed after permanent tendons anchored in adjacent segment have been stressed



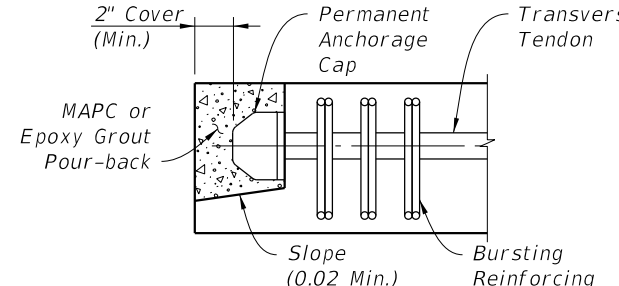
**TYPE 4**



**TYPE 5**



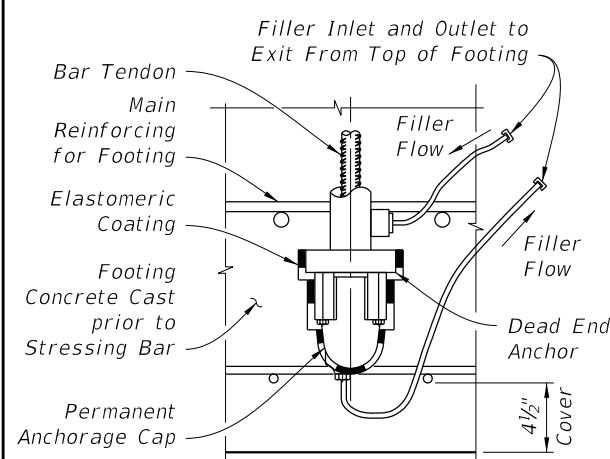
**TYPE 6**



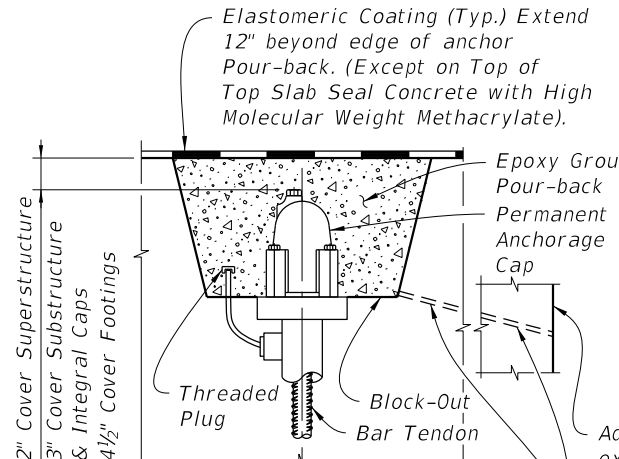
**TYPE 7**

- Type 7 Notes:**
- Traffic or Pedestrian/Bicycle Railing not shown for clarity.
  - Where Pour-back is not protected by Traffic or Pedestrian/Bicycle Railing, Coat Pour-back with High Molecular Weight Methacrylate.

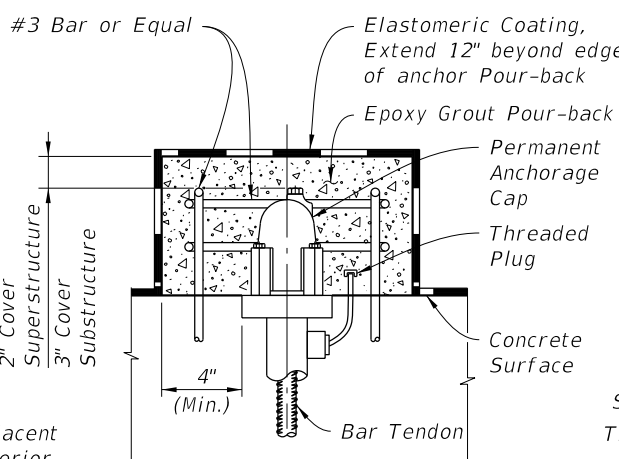
**ANCHORAGE PROTECTION FOR STRAND TENDONS**



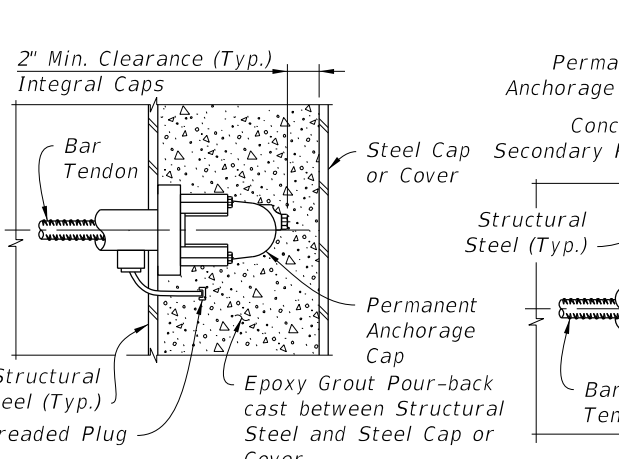
**TYPE 8**



**TYPE 9**

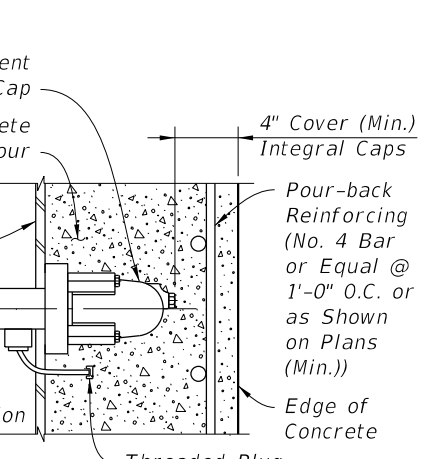


**TYPE 10**



**TYPE 11**

(Shear Studs not Shown for Clarity)



**TYPE 12**

(Shear Studs not Shown for Clarity)

**ANCHORAGE PROTECTION FOR BAR TENDONS**

10/25/2017 4:25:32 PM

LAST REVISION 11/01/16	REVISION	DESCRIPTION:	 <b>FY 2018-19 STANDARD PLANS</b>	<b>POST-TENSIONING ANCHORAGE PROTECTION</b>	INDEX <b>462-002</b>	SHEET <b>1 of 1</b>
---------------------------	----------	--------------	--	---	-------------------------	------------------------