

Safety Line Anchorage Device (Typ.) (See Note 9)

3/4" Chamfer (Typ. bottom of top flange only)

* Reinforcing steel is symmetrical about \bar{C} Beam for Half Sections A-A and B-B.

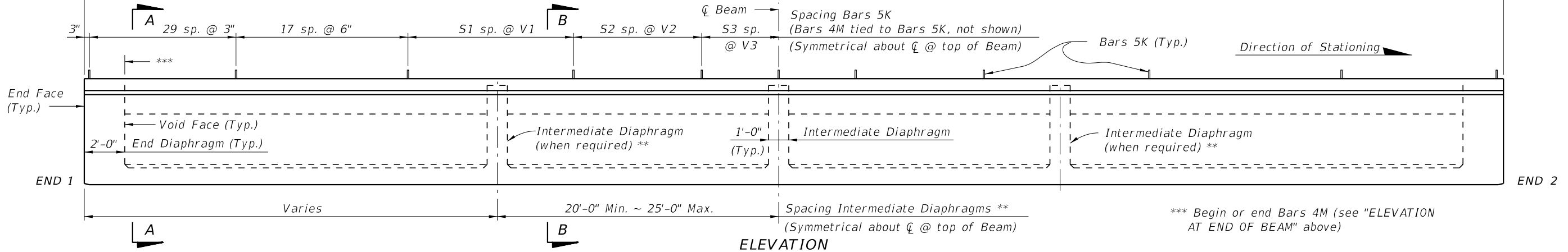
Bars 3D1 lap with Bars 3D2 and 5K as shown (Typ.)

1 1/2" Chamfer (Typ. bottom of bottom flange only)

** Intermediate Diaphragms shall be provided:
 (1) - At midspan.
 (2) - At 25'-0" Max. from midspan when beam length (L) exceeds 70 Ft.

NOTES:
 Work this Index with Index 450-210 - Typical Florida-U Beam Details and Notes and the Florida-U Beam - Table of Beam Variables in Structures Plans.
 For referenced notes see Index 450-210.

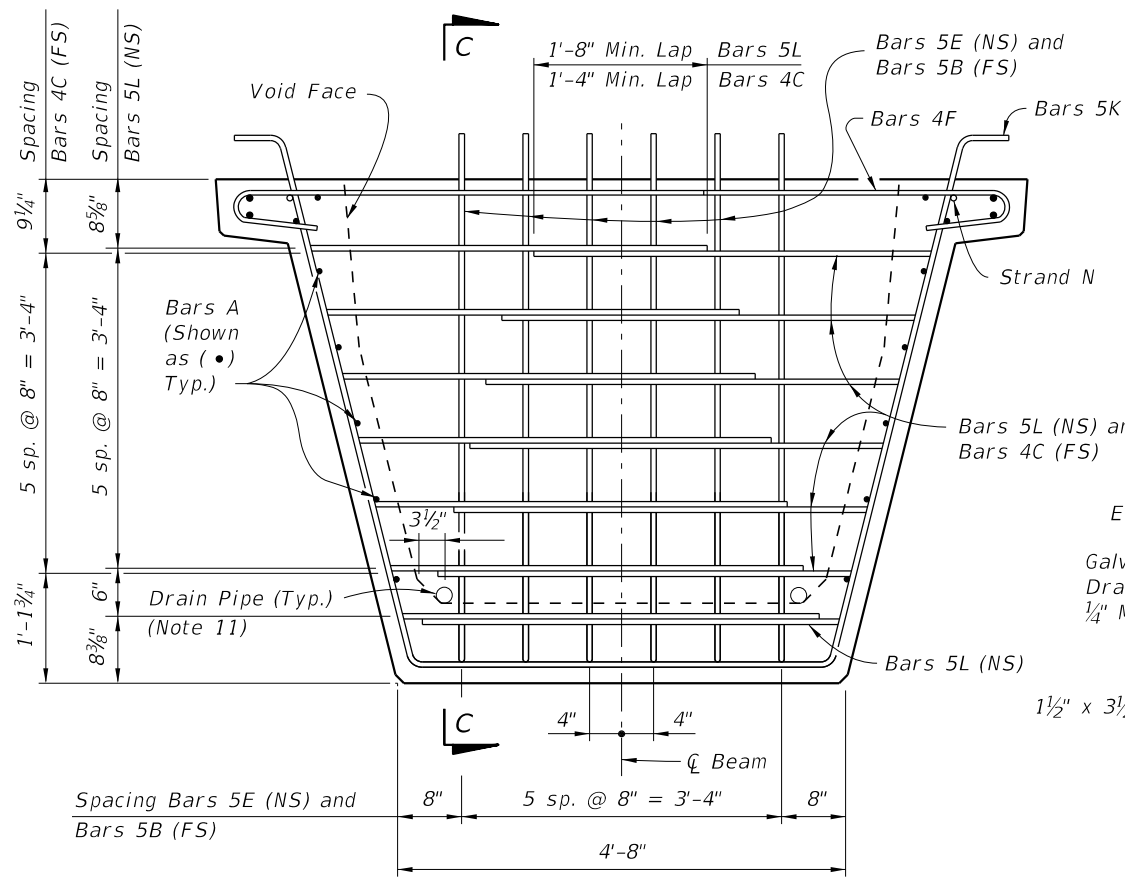
Dim. L = Casting Length (Overall Length of Beam along \bar{C} Beam including length increase as required for beam placed on grade and DIM R to compensate for elastic and time dependent shortening effects)



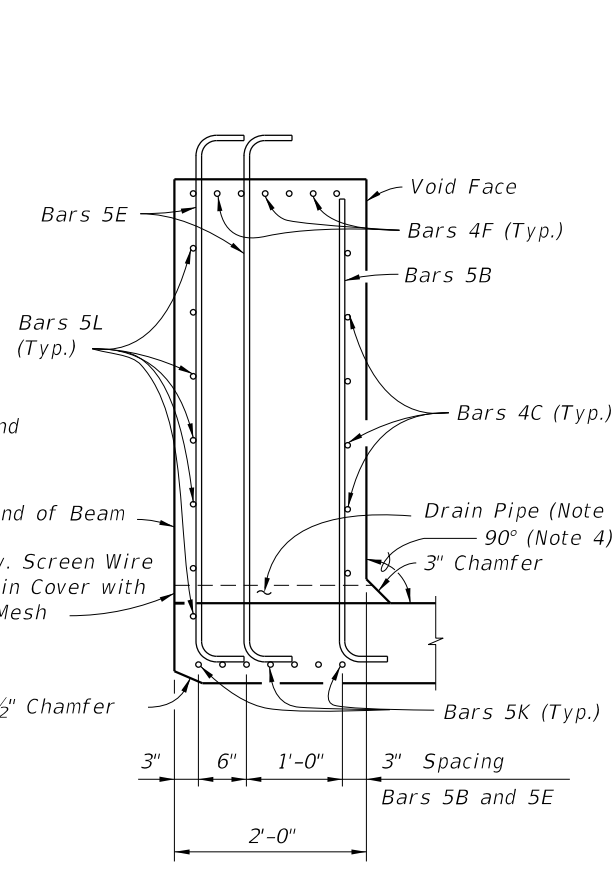
*** Begin or end Bars 4M (see "ELEVATION AT END OF BEAM" above)

10/26/2017 8:29:58 AM

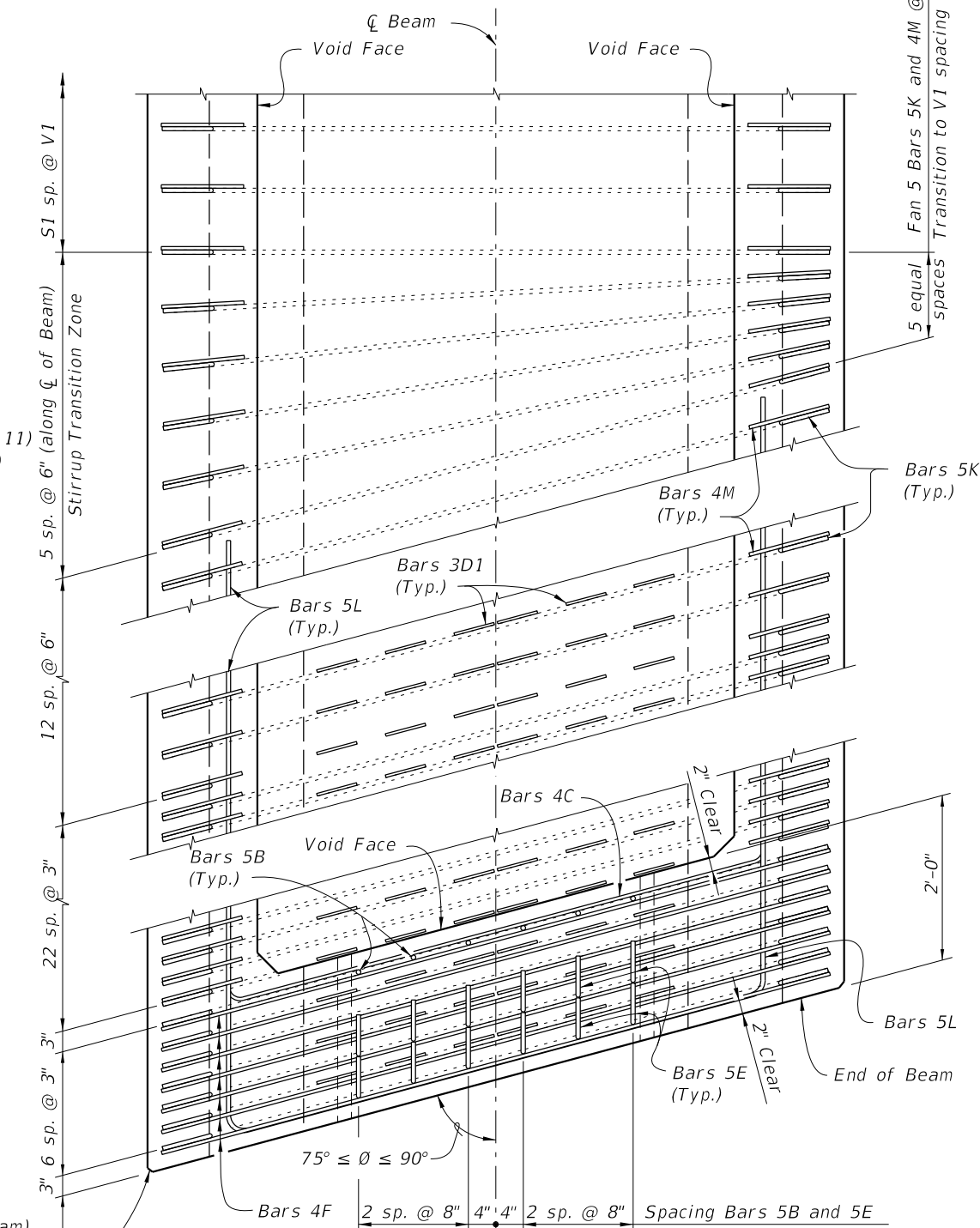
LAST REVISION 11/01/16	DESCRIPTION:	 FY 2018-19 STANDARD PLANS	FLORIDA-U 63 BEAM - STANDARD DETAILS	INDEX 450-263	SHEET 1 of 3
---------------------------	--------------	----------------------------------	--------------------------------------	------------------	-----------------



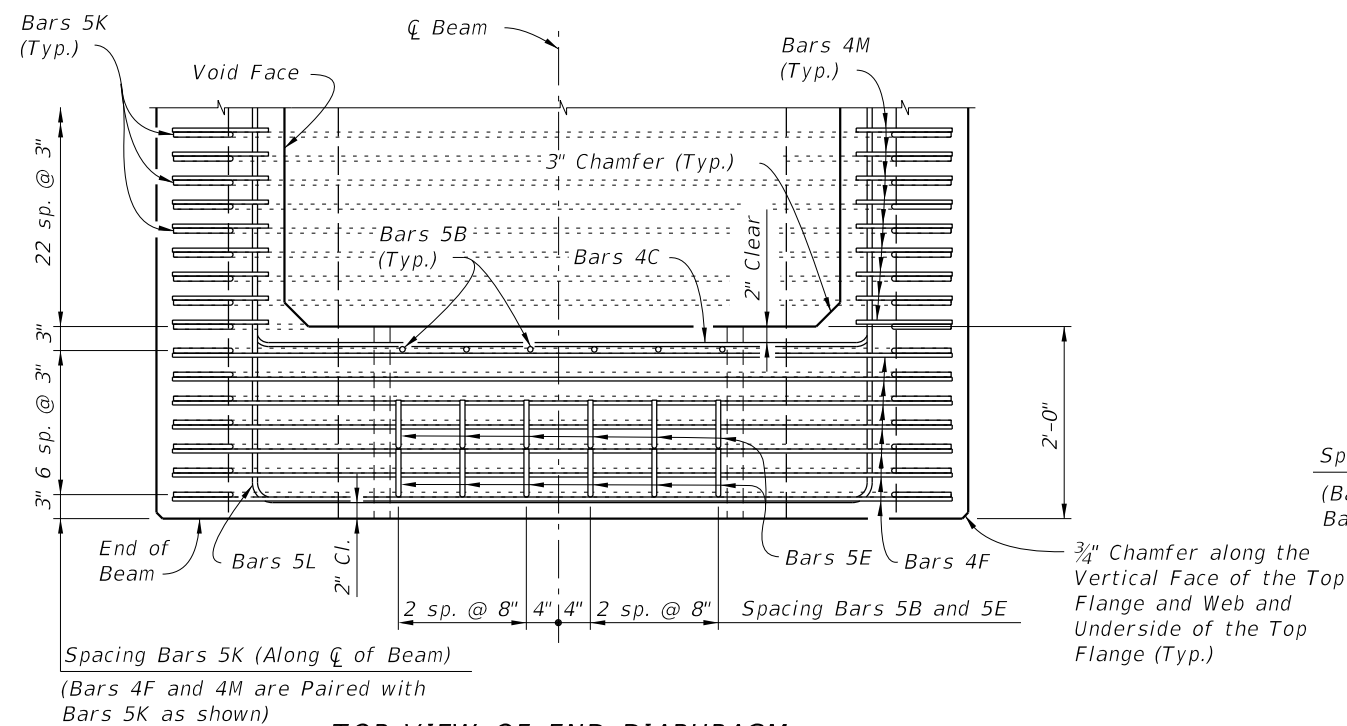
END VIEW AT END DIAPHRAGM



SECTION C-C



TOP VIEW OF SKEWED END DIAPHRAGM AND STIRRUP TRANSITION ZONE (Bars 3D2 Not Shown For Clarity)



TOP VIEW OF END DIAPHRAGM (Bars 3D1 And 3D2 Not Shown For Clarity)

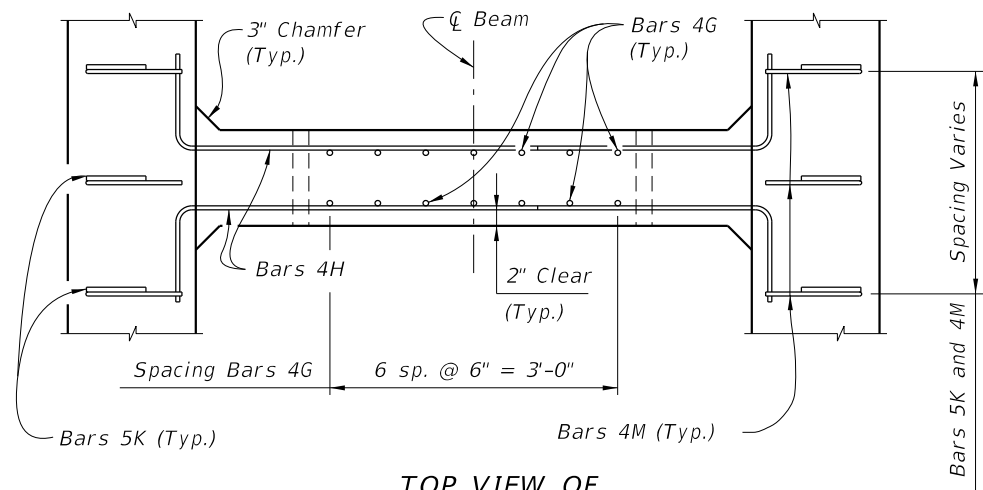
Spacing Bars 5K (Along \bar{C} of Beam)
(Bars 4F and 4M are Paired with Bars 5K as shown)

$\frac{3}{4}$ " Chamfer along the Vertical Face of the Top Flange and Web and Underside of the Top Flange (Typ.)

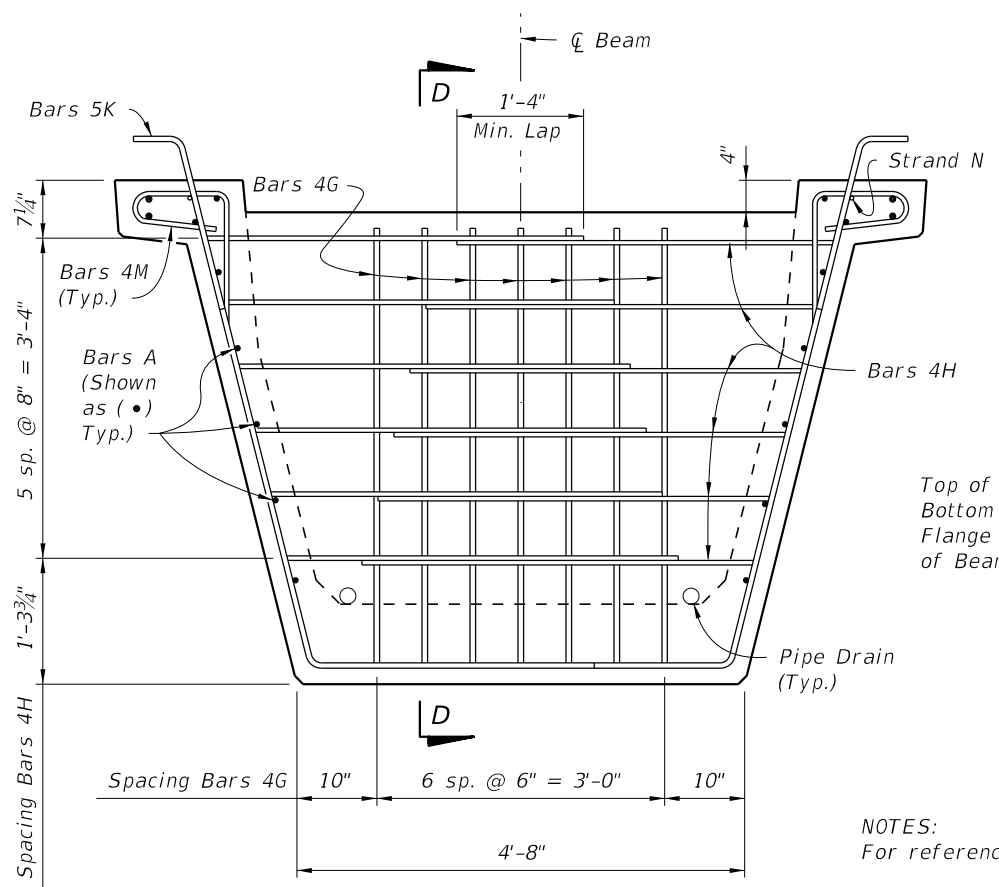
NOTES:
For referenced note see Index 450-210.

10/26/2017 8:29:58 AM

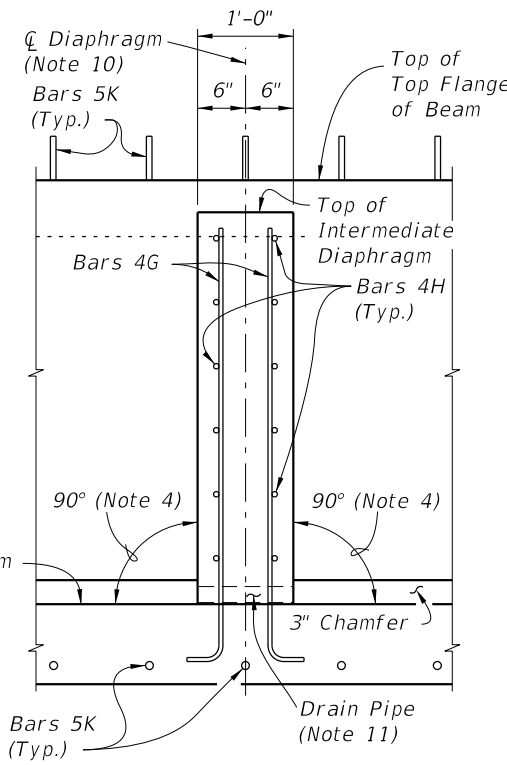
LAST REVISION 11/01/16	DESCRIPTION:
---------------------------	--------------



TOP VIEW OF INTERMEDIATE DIAPHRAGM



SECTION AT INTERMEDIATE DIAPHRAGM

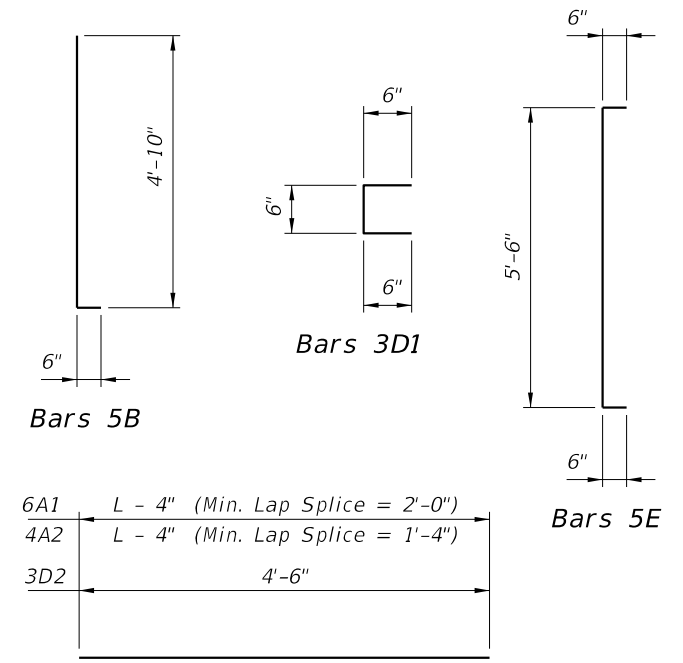


SECTION D-D

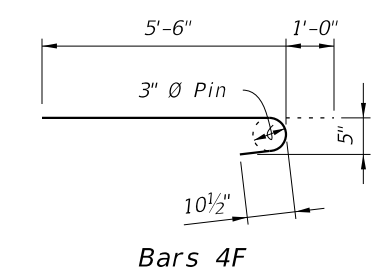
NOTES:
For referenced notes see Index 450-210.

CONVENTIONAL REINFORCING STEEL BENDING DIAGRAMS

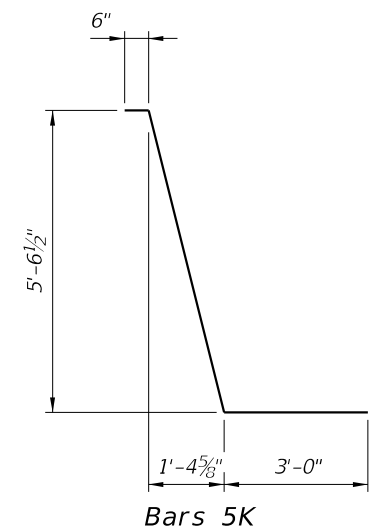
BILL OF REINFORCING STEEL FOR ONE BEAM ONLY			
MARK	SIZE	NO. REQD.	LENGTH
A1	6	4	Dim. L - 4"
A2	4	12	Dim. L - 4"
B	5	12	5'-4"
C	4	24	5'-5"
D1	3	204	1'-6"
D2	3	34	4'-6"
E	5	24	6'-6"
F	4	28	6'-6"
G	4	See Table	5'-3"
H	4	See Table	4'-11"
K	5	See Table	9'-2 1/2"
L	5	28	17'-8"
M	4	See Table	3'-11"
N	3/8" Ø Strand	2	Dim. L - 3"



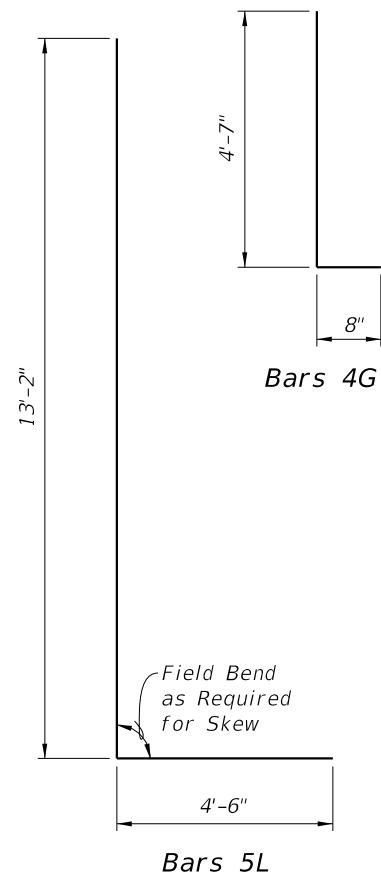
Bars 6A1, 4A2 and 3D2



Bars 4F

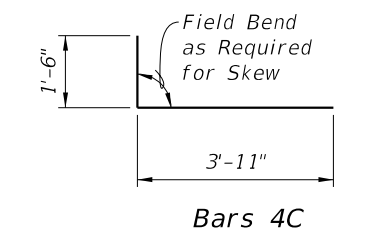


Bars 5K

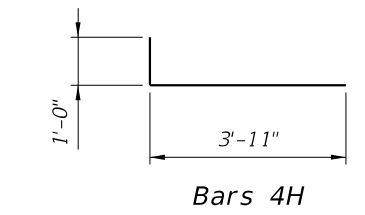


Bars 4G

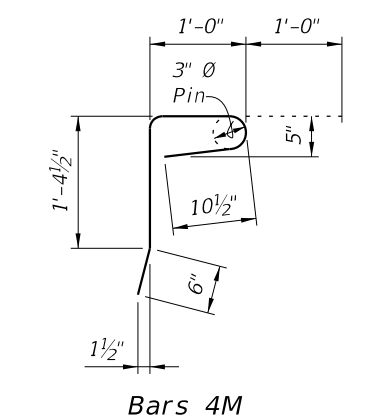
Bars 5L



Bars 4C



Bars 4H



Bars 4M

10/26/2017 8:29:59 AM

LAST REVISION 11/01/16	DESCRIPTION:
---------------------------	--------------