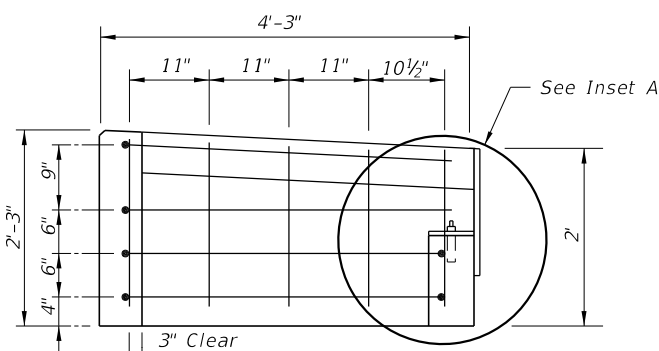
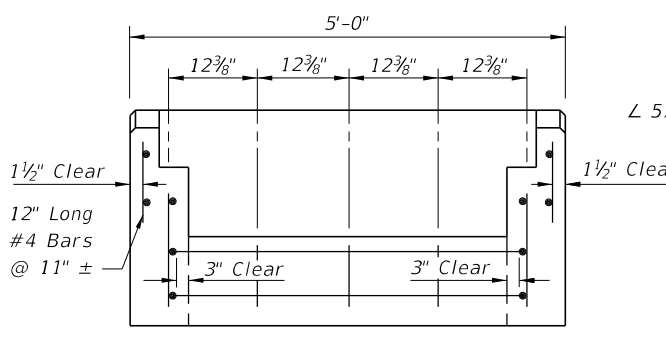


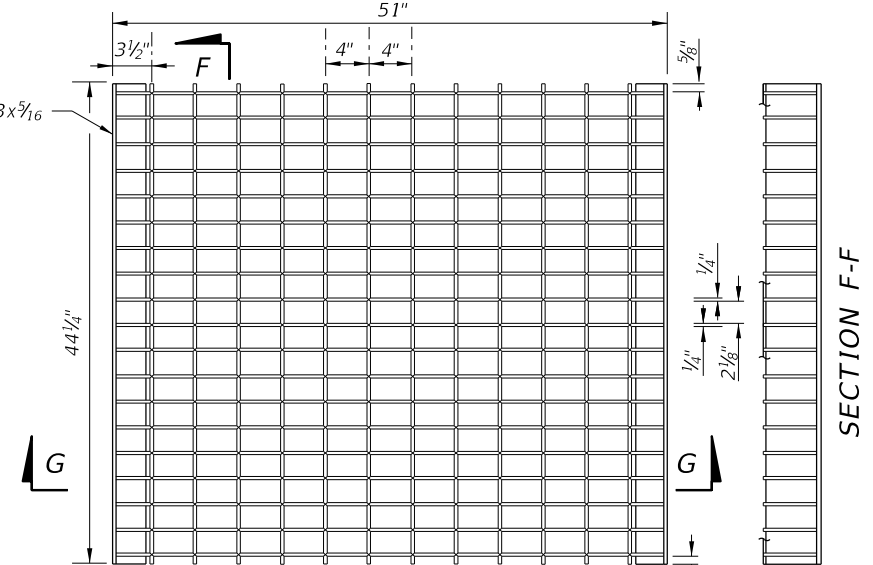
SECTION C-C



SECTION D-D

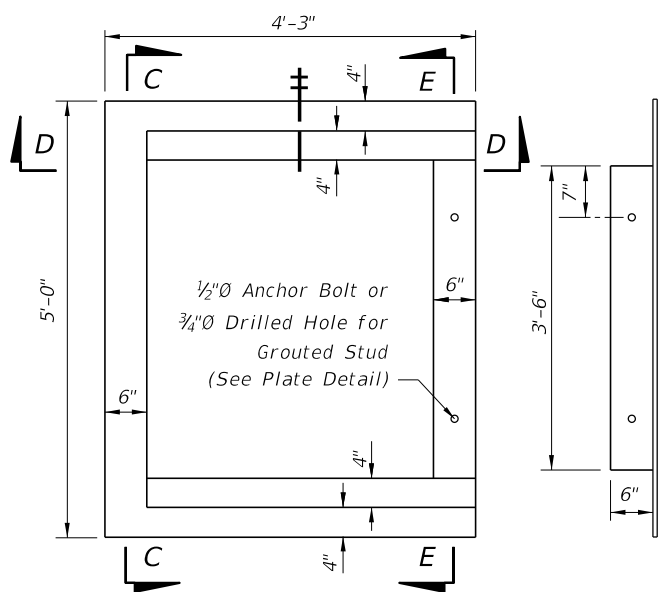


SECTION E-E



Main Bars: 5"x1/4"  
 Cross Bars: Either 3/8"Ø Electroforged or 1/2"Ø Welded

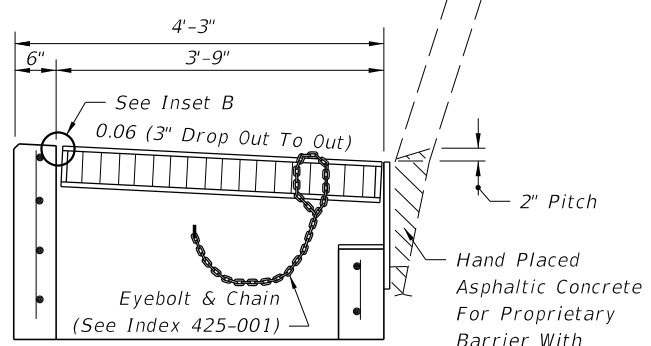
TOP VIEW



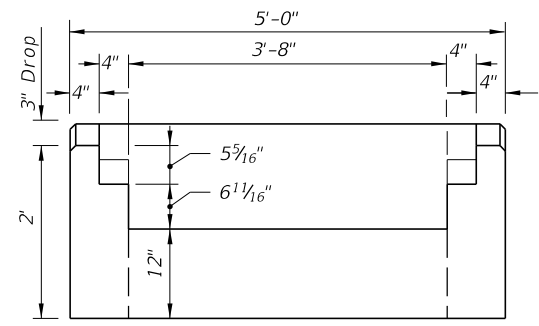
SECTION G-G

TOP VIEW OF INLET WITHOUT GRATE

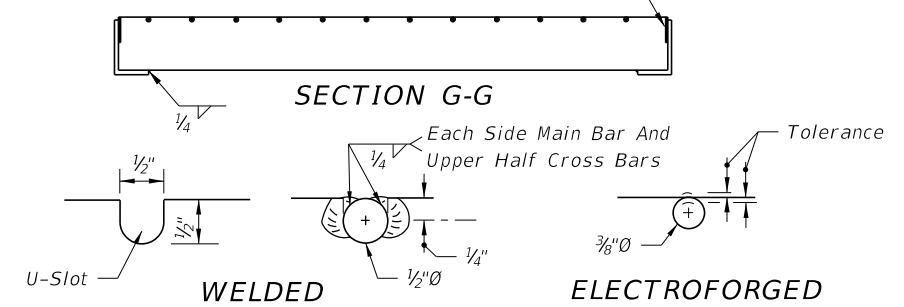
TOP VIEW OF METAL PLATE



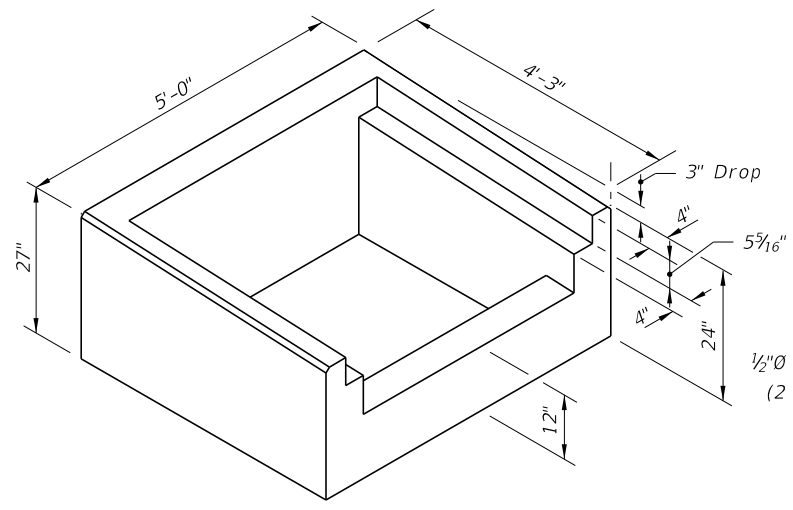
TRANSVERSE SECTION WITH GRATE & PLATE



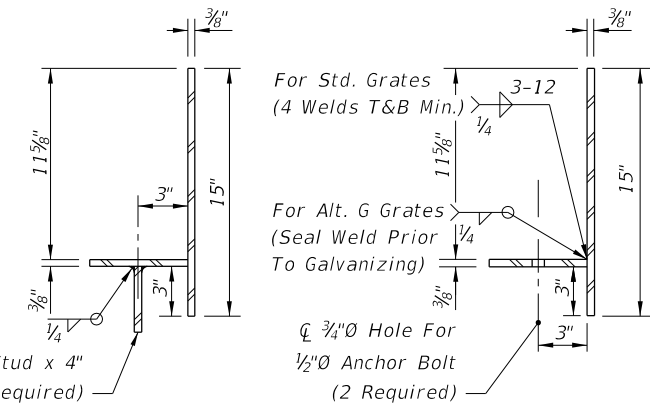
BACK VIEW WITHOUT BACK PLATE



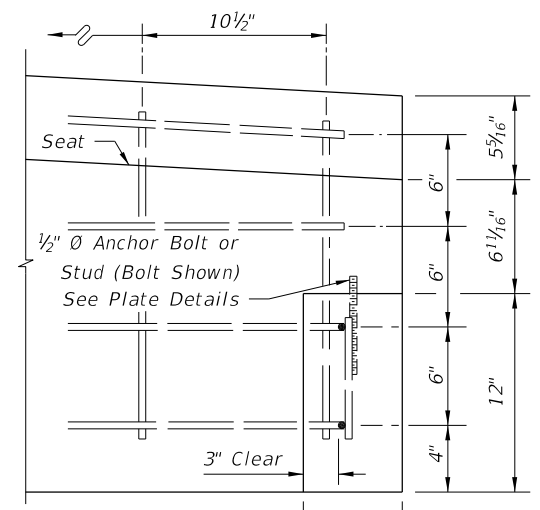
CROSS BAR OPTIONS STEEL GRATE



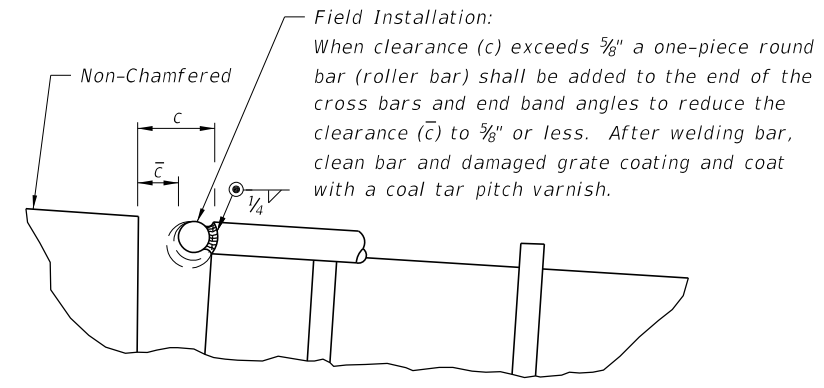
PICTORIAL VIEW OF INLET COLLAR



TRANSVERSE SECTIONS THRU BACKWALL PLATE



INSET A



INSET B (See Sheet 1, General Note 1)

NOTES

- All reinforcing steel bars shown are #4 bars.
- Anchor bolts shall be either ASTM A307 hex head bolts cast-in-place, or ASTM A36 or F1554 (Grade 36) galvanized fully threaded rod, adhesive bonded anchors installed in accordance with Specification Section 416. Bolts or rods shall be 6" long (4" min. embedment) with one heavy hex head nut (ASTM 194 or A563) and one flat washer (ASTM F436) each. All anchor bolts, nuts and washers shall be hot-dip galvanized.

10/16/2017 8:44:00 AM

LAST REVISION 11/01/17	DESCRIPTION:
---------------------------	--------------