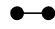
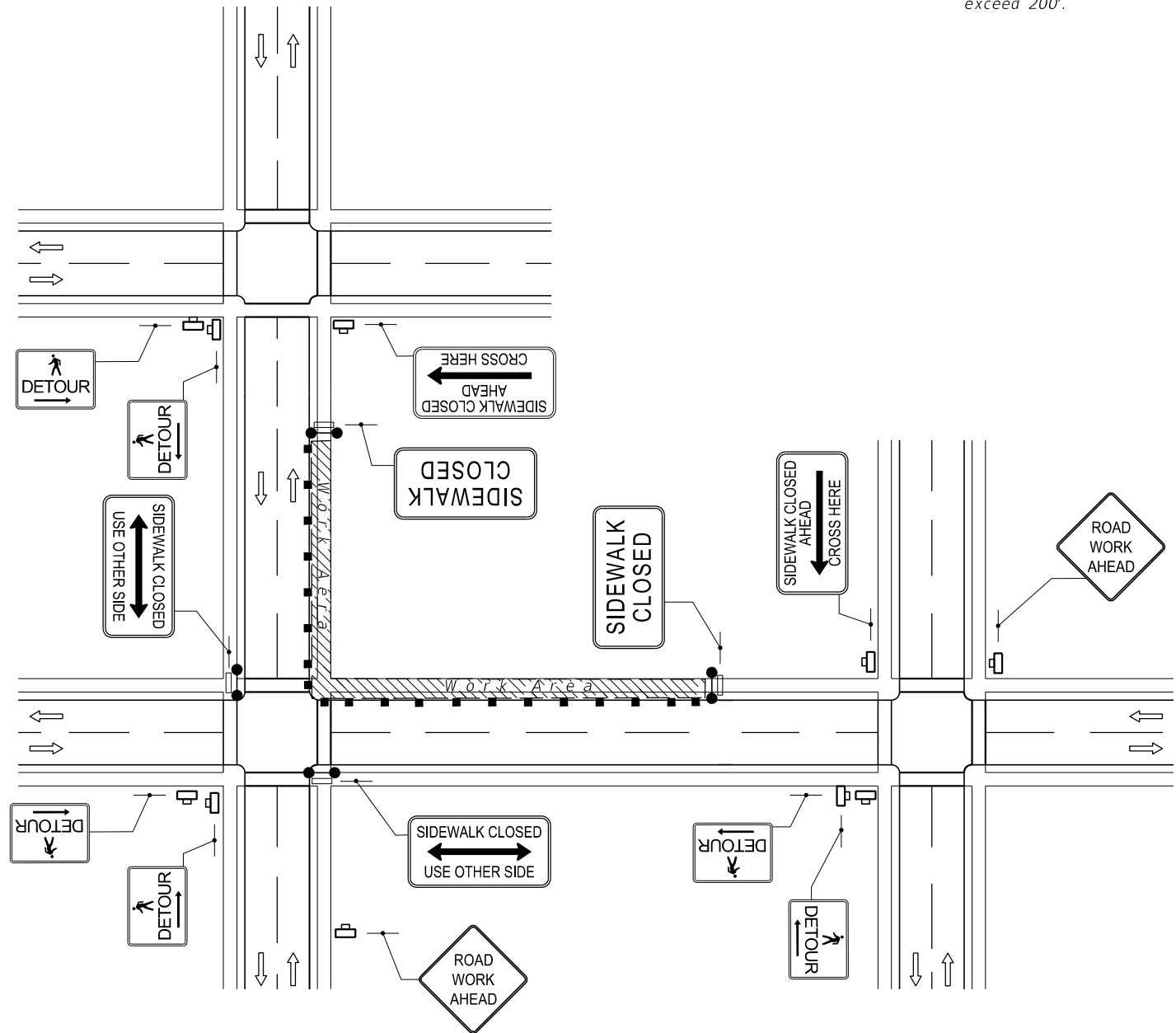


SYMBOLS

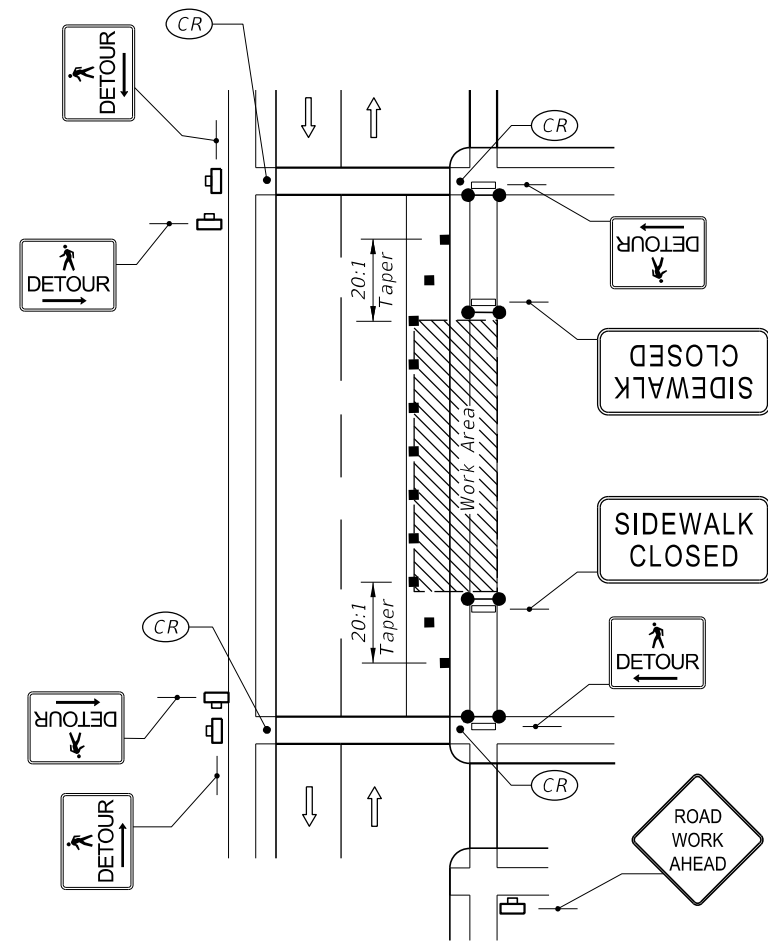
-  Work Area
-  Channelizing Device
-  Work Zone Sign
-  Required Locations For Either Temporary Or Permanent Curb Ramps.
-  Lane Identification + Direction of Traffic
-  Pedestrian Longitudinal Channelizing Device (LCD) with Mounted Work Zone Sign or separate Work Zone Sign
-  Pedestrian Longitudinal Channelizing Device (LCD)
-  Temporary Sidewalk

GENERAL NOTES:

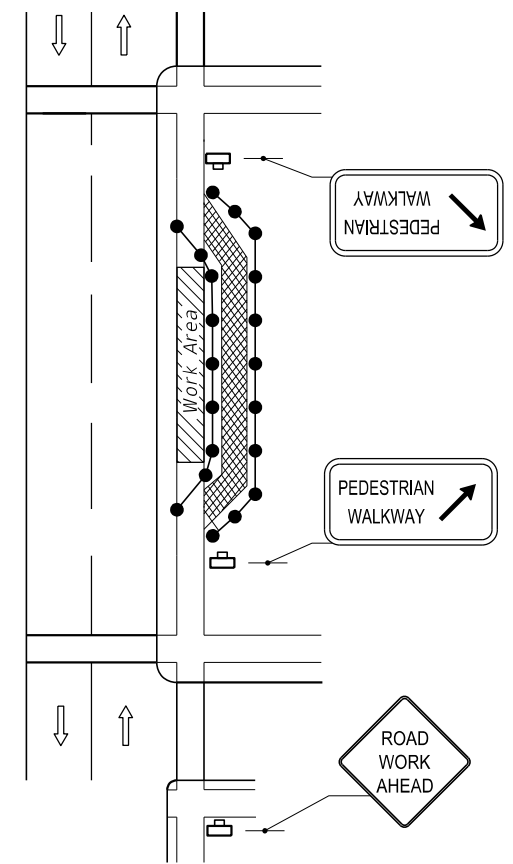
1. When encroaching work requires a sidewalk closure for 60 minutes or greater, provide an alternate pedestrian route.
2. For spacing of vehicular Channelizing Devices, see applicable vehicular temporary traffic control Indexes.
3. Cover or deactivate pedestrian traffic signal display(s) controlling closed crosswalks.
4. For post mounted signs located near or adjacent to a sidewalk, maintain a minimum 7' clearance from the bottom of the sign panel to the surface of the sidewalk.
5. Provide a 5' wide temporary walkway, except where space restrictions warrant a minimum width of 4'. Provide a 5' x 5' passing space for temporary walkways less than 5' in width at intervals not to exceed 200'.
6. Provide a cross-slope with a maximum value of 0.02 for all temporary walkways.
7. Maintain temporary walkway surfaces and ramps that are stable, firm, slip-resistant, and free of any obstructions or hazards such as holes, debris, mud, construction equipment, and stored material.
8. Remove temporary walkways immediately after reopening of the sidewalk, unless otherwise noted in the plans.
9. Meet the requirements of Index 522-002 for temporary curb ramps.
10. Place pedestrian longitudinal channelizing device(s) across the full width of the closed sidewalk. For temporary walkways, similar to the Sidewalk Diversion, place LCDs to delineate both sides of the temporary walkway.
11. For sidewalk diversions, ensure that there is sufficient R/W for placement of temporary sidewalk and pedestrian longitudinal channelizing devices.



CROSSWALK CLOSURE AND PEDESTRIAN DETOUR




SIDEWALK DETOUR



SIDEWALK DIVERSION

10/16/2017 8:17:22 AM

LAST REVISION 11/01/17	REVISION	DESCRIPTION:	 FY 2018-19 STANDARD PLANS	PEDESTRIAN CONTROL FOR CLOSURE OF SIDEWALKS	INDEX 102-660	SHEET 1 of 1
---------------------------	----------	--------------	--	--	------------------	-----------------