

10/27/2017 3:09:00 PM

GENERAL NOTES

1. TWO-WAY TRAFFIC sign(s) shall be repeated every 1/4 mile in each direction, throughout the tangent distance (T).
2. L (min.) = $\frac{WS^2}{60}$ for speeds ≥ 45 mph
= — for speeds ≤ 40 mph

Where:
W= Width of lateral transition in feet.
S= Posted speed limit (mph).

3. Where the tangent distance (T) exceeds 250', spacing between Type I or II barricades or vertical panels or drums may be increased to 100' within the limits of the tangent, or post mounted delineators at 50' centers may be substituted for barricades, vertical panels or drums.
4. All existing pavement markings within the realignment which conflict with the revised traffic pattern are to be removed and removable pavement markings used for making new edge lines.
5. When side roads, cross roads or interchanges intersects the highway within the TTC zone, additional TTC devices shall be placed in accordance with other applicable TCZ Indexes.
6. For general TCZ requirements and additional information, refer to Index 102-600.

SCHEME APPLICATIONS

Scheme 1: Restricted Construction Limits.




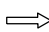
Scheme 2: Unrestricted Construction Limits And Light To Moderate Traffic.

Scheme 3: Unrestricted Construction Limits And Moderate To Heavy Traffic.

Where: Construction Limits Are The Outward Beginning Or Ending Of Lane Reductions.

Where: Unless A Specific Scheme Is Called For In The Plans, Scheme Selection Shall Be At The Contractor's Option And As Approved By The Engineer.

SYMBOLS

-  Work Area
-  Channelizing Device (See Index 102-600)
-  Work Zone Sign
-  Advance Warning Arrow Board
-  Lane Identification + Direction of Traffic

CONDITIONS

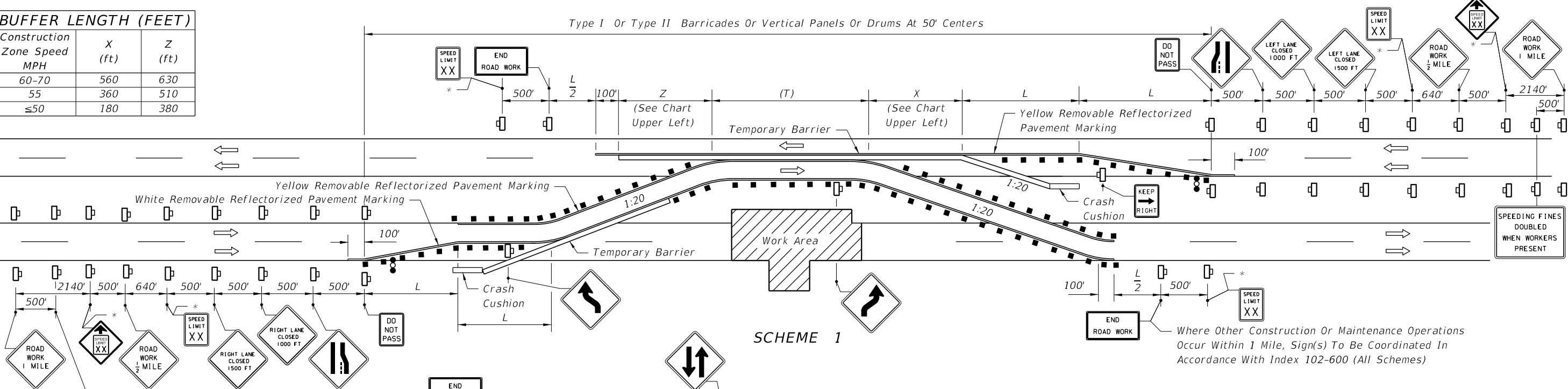
WHERE ANY VEHICLE, EQUIPMENT, WORKERS OR THEIR ACTIVITIES REQUIRE THE CLOSURE OF ONE ROADWAY AND THE OPPOSING ROADWAY IS CONVERTED TO TEMPORARY TWO-WAY TRAVEL BY WAY OF CROSSOVERS.

LAST REVISION 11/01/17	REVISION DESCRIPTION:	 FY 2018-19 STANDARD PLANS	MULTILANE, DIVIDED TEMPORARY DIVERSION CONNECTION	INDEX 102-620	SHEET 1 of 2
---------------------------	-----------------------	--	--	-------------------------	------------------------

BUFFER LENGTH (FEET)

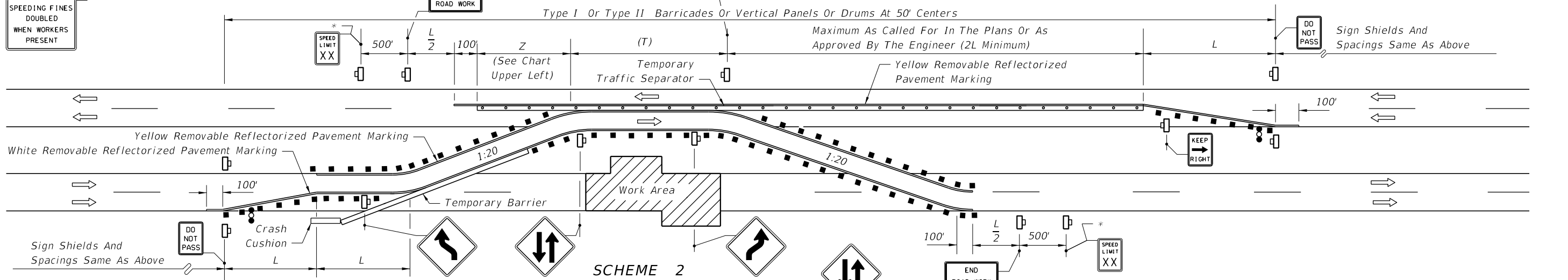
Construction Zone Speed MPH	X (ft)	Z (ft)
60-70	560	630
55	360	510
≤50	180	380

Type I Or Type II Barricades Or Vertical Panels Or Drums At 50' Centers

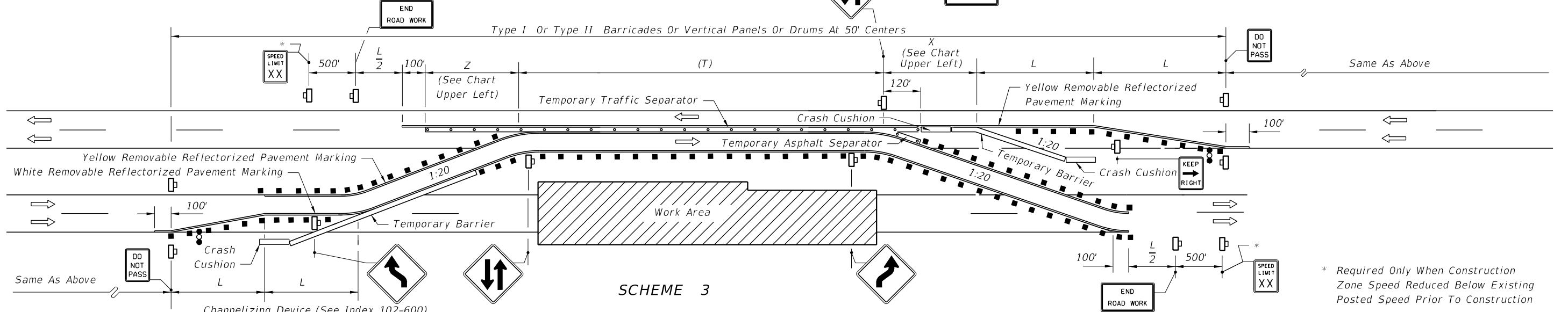


SCHEME 1

Where Other Construction Or Maintenance Operations Occur Within 1 Mile, Sign(s) To Be Coordinated In Accordance With Index 102-600 (All Schemes)



SCHEME 2



SCHEME 3

Note: See Sheet 1 for Scheme Applications

* Required Only When Construction Zone Speed Reduced Below Existing Posted Speed Prior To Construction

10/27/2017 3:09:01 PM

LAST REVISION 11/01/17	REVISION	DESCRIPTION:		FY 2018-19 STANDARD PLANS	MULTILANE, DIVIDED TEMPORARY DIVERSION CONNECTION	INDEX 102-620	SHEET 2 of 2
---------------------------	----------	--------------	--	------------------------------	--	------------------	-----------------