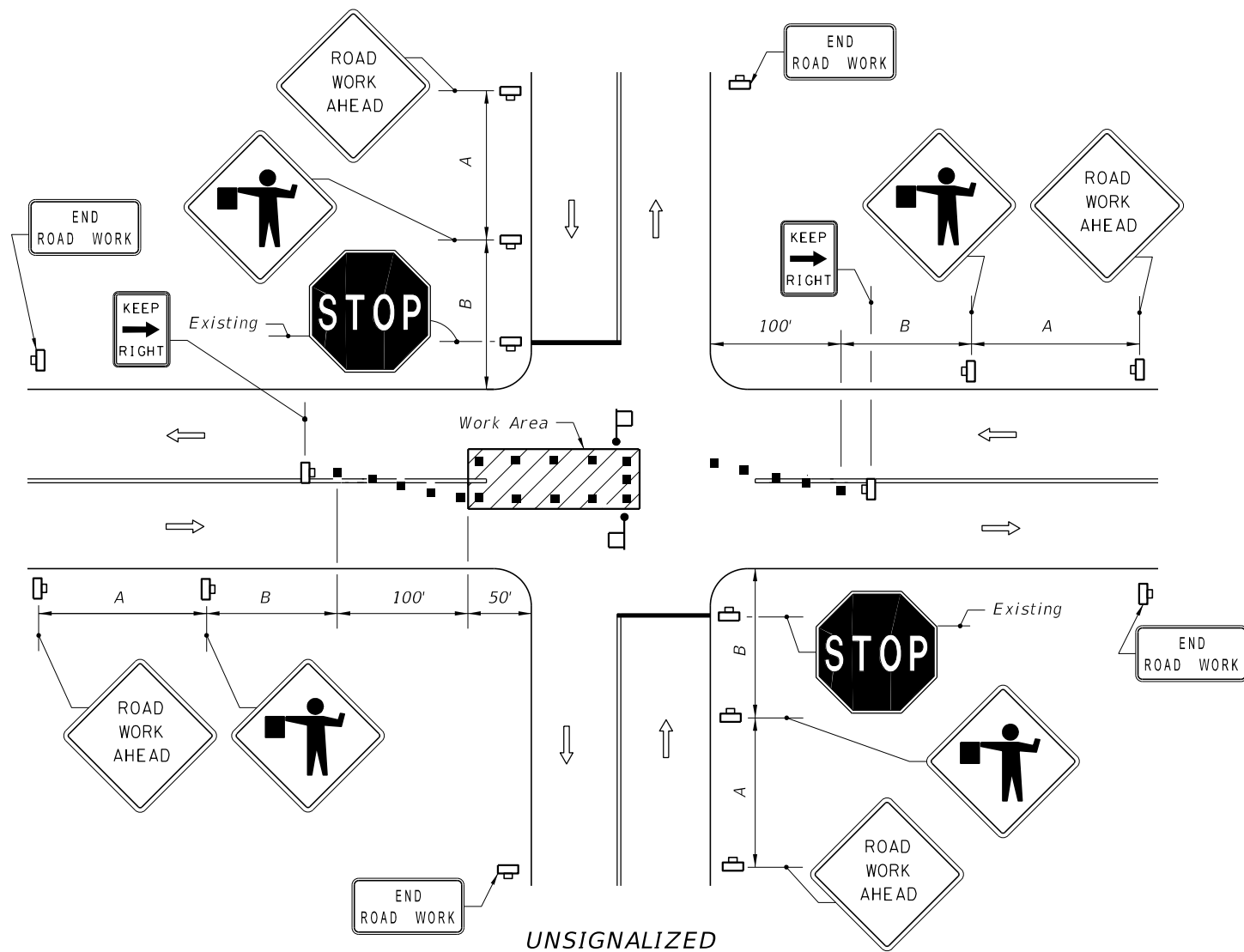
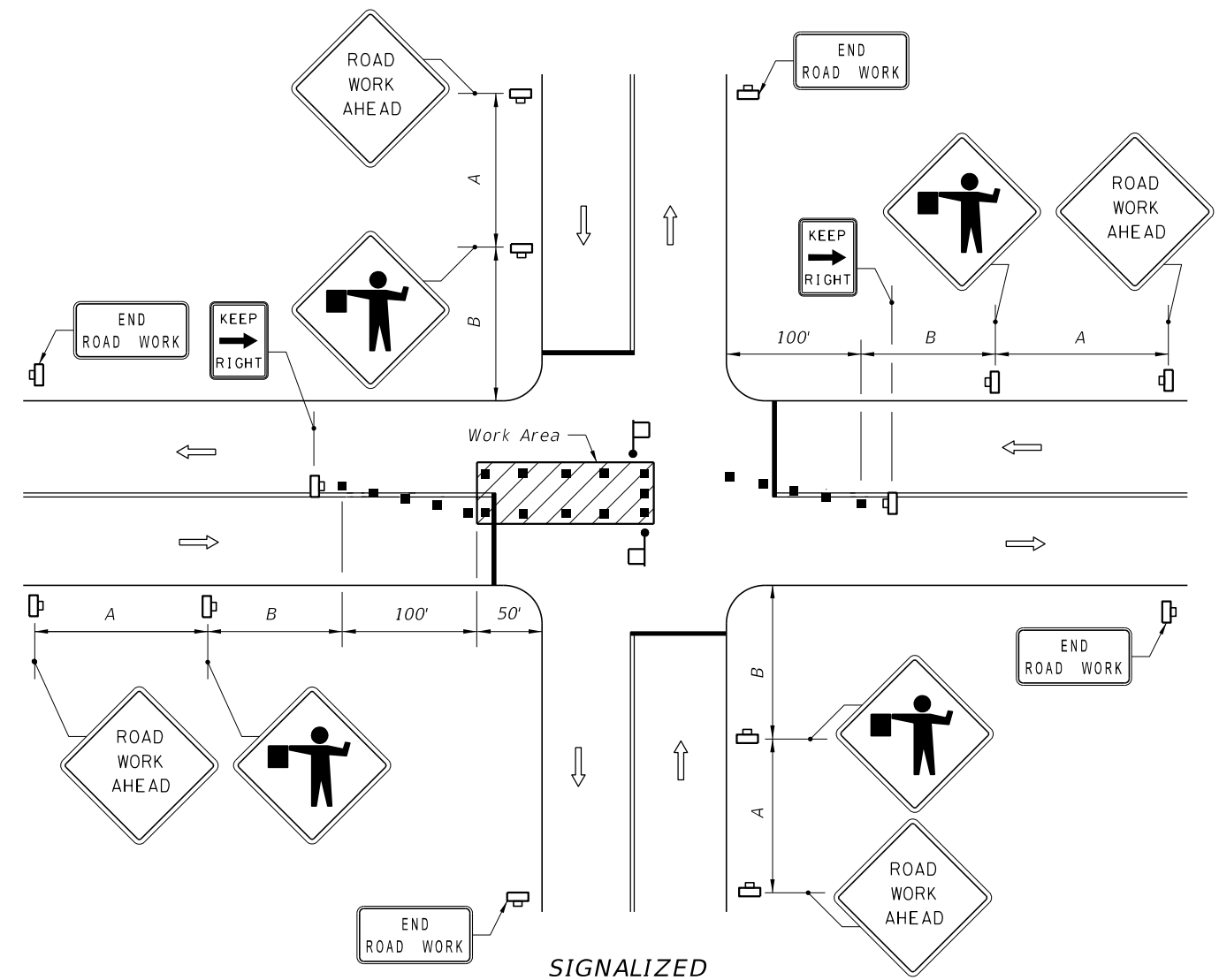


10/16/2017 8:04:52 AM



UNSIGNALIZED



SIGNALIZED

**SYMBOLS**

- Work Area
- Channelizing Device (See Index 102-600)
- Work Zone Sign
- Flagger
- Stop Bar
- Lane Identification + Direction of Traffic

**GENERAL NOTES**

1. The FLAGGER legend sign may be substituted for the symbol sign.
2. When vehicles in a parking zone block the line of sight to TCZ signs, the signs shall be post mounted and located in accordance with Index 700-101.
3. If the work space extends across a crosswalk, the crosswalk should be closed using the information in Index 102-660.
4. Flaggers shall be located where they can control more than one direction of traffic.  
  
Flaggers shall be in sight of each other or in direct communication at all times.
5. Maximum spacing between channelizing devices shall be not greater than 20'.
6. Temporary signal phasing modifications are to be approved by the District Traffic Operations Engineer prior to the beginning of work.
7. For general TCZ requirements and additional information, refer to Index 102-600.
8. For unsignalized intersections, use Temporary Raised Rumble Strips in accordance with Index 102-603. Placement of Rumble Strips and additional signs should begin at FLAGGER sign location.

**DURATION NOTES**

1. ROAD WORK AHEAD AND END ROAD WORK sign may be omitted if all of the following conditions are met:
  - a. Work operations are 60 minutes or less.
  - b. Speed is 45 mph or less.
  - c. No sight obstructions to vehicles approaching the work area for a distance equal to A plus B.
  - d. Vehicles in the work area have high-intensity, rotating, flashing, oscillating, or strobe lights operating.
  - e. Volume and complexity of the roadway has been considered.

**DISTANCE BETWEEN SIGNS**

Speed	Spacing (ft.)	
	A	B
40 mph or less	200	200
45 mph	350	350

**CONDITIONS**

WHERE ANY VEHICLE, EQUIPMENT, WORKERS OR THEIR ACTIVITIES ENCROACH ON THE PAVEMENT REQUIRING THE CLOSURE OF A PORTION OF ONE OR MORE TRAFFIC LANES IN AN INTERSECTION.

LAST REVISION 11/01/17

DESCRIPTION:



FY 2018-19  
STANDARD PLANS

TWO-LANE, TWO-WAY, WORK IN INTERSECTION

INDEX  
102-604

SHEET  
1 of 1