

FDOT DISTRICT 5 INTERMODAL SYSTEMS DEVELOPMENT (ISD) INDUSTRY FORUM

April 8, 2026





Welcome and Purpose of Forum

Joseph Fontanelli

Project Development Supervisor

Austin Webb

Project Manager

Agenda



- 1. WELCOME AND PURPOSE OF FORUM**
9:00 AM – 9:05 AM
- 2. LEADERSHIP UPDATE**
9:05 AM – 9:25 AM
- 3. STAFFING UPDATE**
9:25 AM – 9:40 AM
- 4. PROJECT DELIVERY STRATEGY**
9:40 AM – 10:15 AM
- 5. CONSULTANT PROJECT MANAGEMENT UPDATE**
10:15 AM – 10:20 AM
- 6. BREAK**
10:20 AM – 10:40 AM
- 7. PROJECT STRATEGY EXAMPLES**
10:40 AM – 11:00 AM
- 8. PERMITTING AND ENVIRONMENTAL MANAGEMENT UPDATE**
11:00 AM – 11:10 AM
- 9. STRATEGIC CORRIDOR INITIATIVES (DISCO)**
11:10 AM – 11:25AM
- 10. TRANSIT PLANNING UPDATES**
11:25 AM – 11:35 AM
- 11. RAIL UPDATES**
11:35 AM – 11:40 AM
- 12. Q&A**
11:40 AM – 11:55 AM

Introduction and Overview of Meeting Objectives

Welcome & Purpose of Forum

- Strengthen collaboration between FDOT and our industry partners
- Promote open dialogue on priorities, challenges, and opportunities
- Share key updates across ISD disciplines
- Align expectations to support successful project delivery

Overview of Meeting Objectives

- Provide updates on ISD programs, initiatives, and policy changes
- Highlight project delivery strategies and real-world examples
- Identify risks and opportunities to improve outcomes
- Encourage feedback to promote consistency and efficiency





Leadership Update

Secretary Tyler, P.E.

District 5 Secretary



Leadership Update

Director Stroz, P.E.

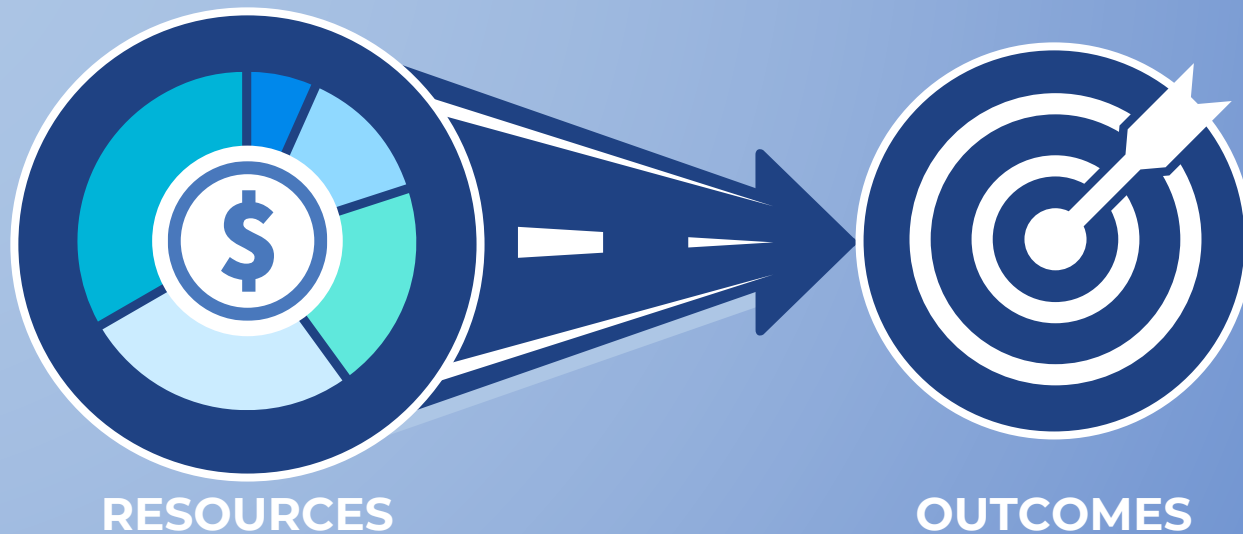
Director of Transportation Development

DRIVE-ING INNOVATIONS FORWARD

DEPARTMENT'S REVIEW FOR INNOVATION AND VALUE ENHANCEMENT (DRIVE)

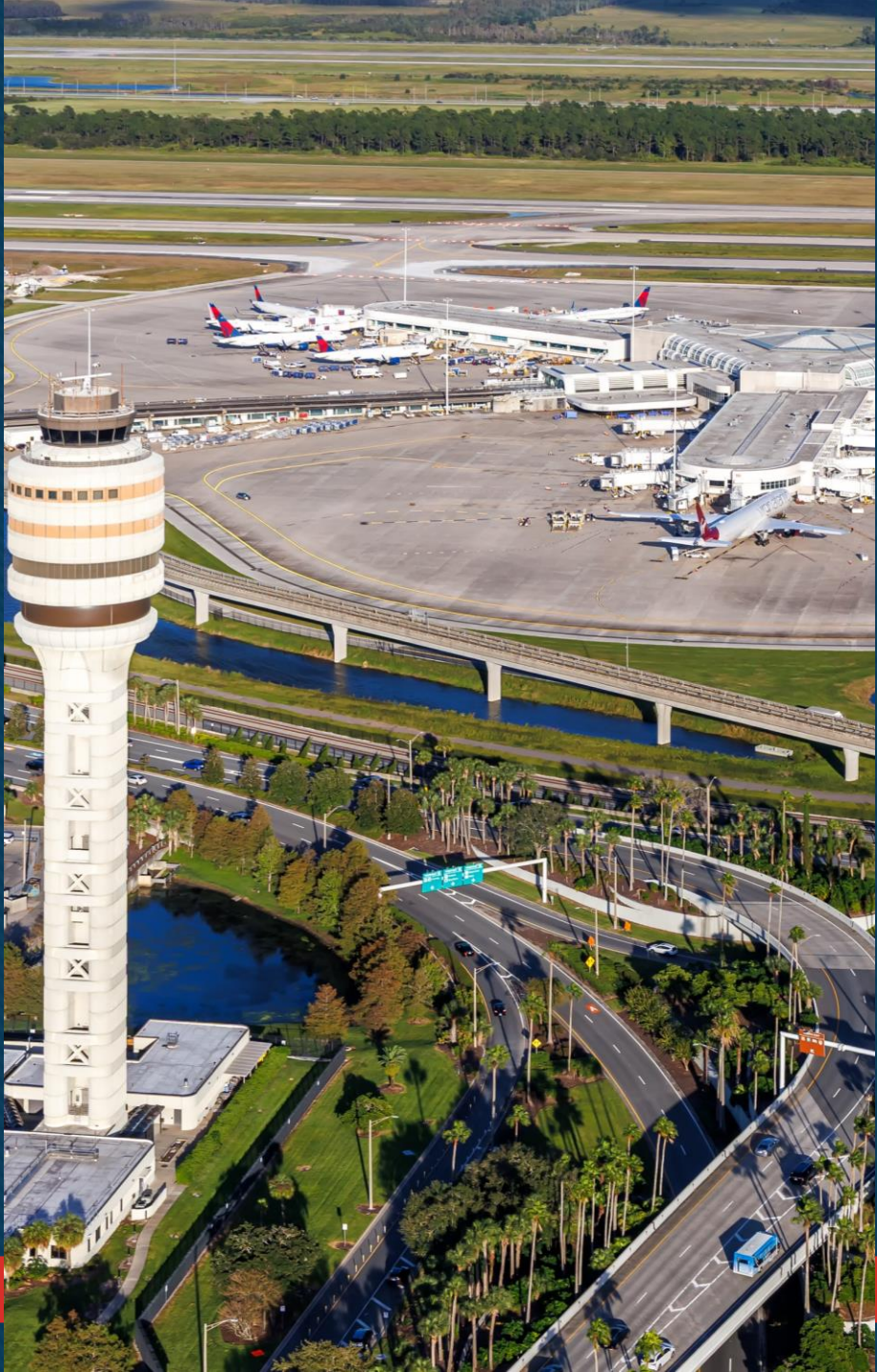
bringing more value to our communities through cost-savings & Innovative project delivery methods

DOING MORE WITH LESS



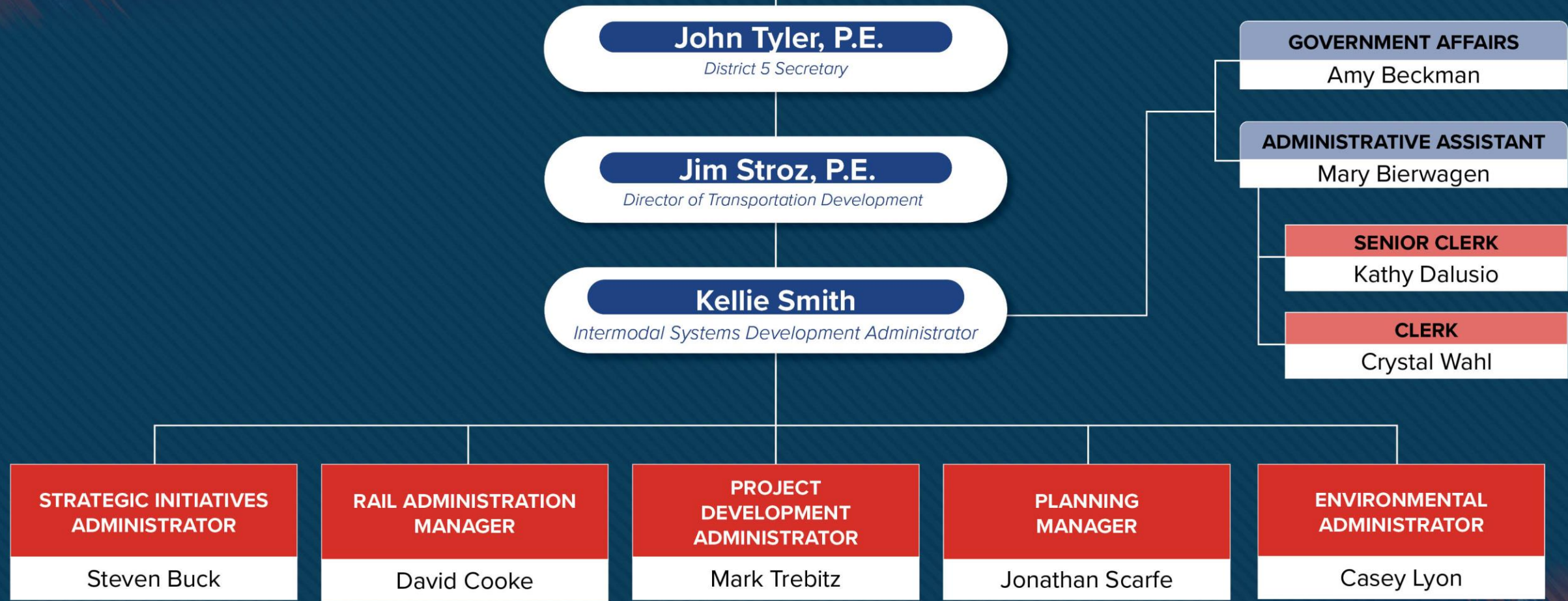
WE ALL PLAY A ROLE:

-  FDOT Central Office & Districts
-  Contractors
-  Consultants



Staffing Update
Kellie Smith
ISD Administrator

FDOT
DISTRICT 5



Current Staffing

PROJECT DEVELOPMENT ADMINISTRATOR

Mark Trebitz



SCOPING

**SCOPING PROGRAM
MANAGER**

Celine Bounds

PD&E

**PROJECT
DEVELOPMENT
SUPERVISOR**

Joseph Fontanelli

Project Managers

Maria Serrano-Acosta,
Austin Webb

**PROJECT
DEVELOPMENT/
FREIGHT**

**PD&E MANAGER /
FREIGHT**

Libertad Acosta-Anderson

DIRC

Melissa Winsett

Project Manager

Paul Schoelzel



STRATEGIC INITIATIVES ADMINISTRATOR

Steven Buck

PLANNING

PLANNING SUPERVISOR

Tiffany Hill

Planning Coordinator

James Rodriguez

MODAL

MODAL MANAGER SEAPORT/AIRPORT COORDINATOR

Allison McCuddy

Aviation Coordinator

Joseph Jerkins

STRATEGIC INITIATIVES

STRATEGIC INITIATIVES MANAGER

Jeremy Dilmore

Strategic Project
Manager/Space
Coordinator

Sarah Van Gundy

Transportation Planner

Jason Learned

SUNTRAIL/SCENIC BYWAYS

SCENIC BYWAYS AND SUNTRAIL COORDINATOR

Alice Giuliani



RAIL ADMINISTRATION MANAGER

David Cooke

RAIL

RAIL COORDINATOR

David Mixon

WORK PROGRAM

WORK PROGRAM COORDINATOR

Matthew Pierce



ENVIRONMENTAL ADMINISTRATOR

Casey Lyon

ENVIRONMENTAL PERMITS

ENVIRONMENTAL PERMITS SUPERVISOR

Nicole Belian

District ETDM Coordinator

Jennifer Allcock

District NPDES Coordinator

Joyce Rebar

**District Contamination
Impact Coordinator**

Karen Milicic

ENVIRONMENTAL MANAGEMENT

ENVIRONMENTAL MANAGEMENT OFFICE SUPERVISOR

Vacant

**District Cultural
Resources Coordinator**

Haylee Glasel

**District NEPA
Compliance Coordinator**

Deysia Roberson

**District LAP
Environmental Coordinator**

Luciana Taylor

PLANNING MANAGER

Jonathan Scarfe



**MPO
LIAISONS**

**Metroplan Orlando
Liaison**

Jonathan Scarfe

**LSMPO/Space Coast
Liaison**

Charles Koppernolle

**Marion/Volusia-Flagler
Liaison**

Kia Powell

**TRANSIT
PLANNING**

**LYNX/TRANSIT
SUPERVISOR**

Jo Santiago-Mercer

**Lake/Sumter/Brevard
Transit Liaison**

Jamie Ledgerwood

**Marion/Volusia/Flagler
Transit Liaison**

Carlos Colon

Selection Grading Criteria

KEY RESPONSIBILITIES FOR THIS CONTRACT MAY INCLUDE:

- 01 Transportation policy analysis and development
- 02 Subarea and corridor planning
- 03 Community Engagement and Project Development
- 04 Metropolitan Planning Organization (MPO) Assistance
- 05 SIS Support
- 06 Roadway Characteristic Inventory (RCI)
- 07 Facilitate Public Involvement Activities
- 08 Perform Engineering Analyses

TASKS

PROPOSED
PROJECT STAFFING

MANAGEMENT
APPROACH

TECHNICAL APPROACH
& ENGAGEMENT

OTHER
CONSIDERATIONS

SCORING

10

25

25

40



PD&E Project Delivery Strategy

Mark Trebitz, P.E.

Project Development Administrator

Strategic Project Delivery

PROJECT SPECIFIC APPROACH

Specific, Strategic & Intentional

Risk Based Approach	Start With the End in Mind	Design Overlap	Bring Creative Solutions
<ul style="list-style-type: none">• Identify largest risk items on day one – these drive our approach• Advance risk items early to start mitigating a solution or consensus• Official risk registers	<ul style="list-style-type: none">• Consider full development process• One Project, One FDOT – Delivering a project, not just a PD&E study	<ul style="list-style-type: none">• PD&E is pre-design – integration of other units into key decision making• Continuation of strategy into Design – “Notes to Design PM”• Opportunity for strategic early survey, Geotech, utility, property owner engagement	<ul style="list-style-type: none">• Pursue variations• Interim/relief improvements• DRIVE mentality

Project Development Policy

- Intent is timely project delivery
- Upon completion of a feasibility assessment...
 - Program/fund preliminary engineering, PD&E, and design phases
 - At the start of the PD&E phase — Construction funding is available and programmed within 8 years
- PD&E studies (new alignment and capacity projects)
 - Completed within 18 months after date of commencement



Florida Department of Transportation
605 Suwannee Street
Tallahassee, FL 32399-0450

RON DESANTIS
GOVERNOR

JARED W. PERDUE, P.
SECRETARY

POLICY

Effective: 01/07/2026
Office: Office of Policy Planning
Topic No.: 000-525-055

Reference: s. 334.63,
Florida Statutes

PROJECT DEVELOPMENT POLICY

It is the policy of the Department that project development phases of a transportation project, including preliminary engineering, project development and environment (PD&E), and design, result in timely project delivery. Upon completion of a feasibility assessment with implementation recommendations, the Department will program and fund preliminary engineering, PD&E, and design phases of transportation projects with the requirement that projected funding is available and programmed for construction within eight (8) years from the start of the PD&E phase.

PD&E studies for new alignment projects and capacity improvement projects must be completed to the maximum extent possible within 18 months after the date of commencement. Any exceptions to this policy must be approved by the Department's Chief Operations Officer prior to programming and funding the project phases.

This policy will be integrated into all aspects of the development process, including manuals, guidelines, Work Program Instructions, and related documents governing preliminary engineering, PD&E, design, construction and funding of transportation facilities.

Declassified by:

Jared W. Perdue, P.E.
Secretary

DRIVE – D/C Initiative

Department's Review for Innovation and Value Enhancement

- Identify & implement efficiencies & innovations for project delivery across all program areas
- Focus on design to strengthen project discipline
- Influence cost savings for construction projects (under \$100M)

PD&E:

- Approach projects from a creative, value driven approach for concept refinements and cost savings

Scoping RRR:

- Setting a concept and estimate for the DRIVE Team/Design Consultant to set a baseline in design for comparison in cost savings



Initiative for Intentionality

Americans with Disabilities Act

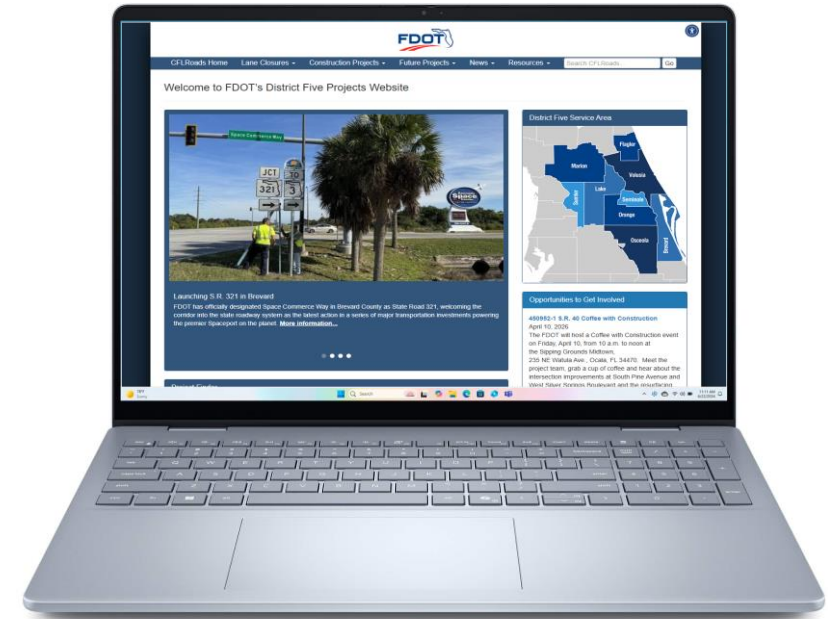
ADA Title II and Section 508 Digital Accessibility Compliance WCAG 2.1 AA

New federal requirement for accessibility of public facing websites/documents:

- **Alt Text** – every image needs a text description so screen readers can convey the information to those who can't see it (must describe purpose not just appearance)
- **Distinguishable** – colors and contrasts (can't rely on color alone to convey meaning)
- **Content in order** (structured so it's easy to navigate)
- **Media with captions or audio descriptions**

Impacts to PD&E:

- **CFLRoads.com** – not posting all documents, just specific documents
- **Public Meetings** – PowerPoints, project boards, attachments in virtual meeting
- **Documents** – only specific documents that will be virtually facing



Deadline of April 24, 2026
All Government Websites

Deadline February 1, 2026
FDOT PD&E Compliance

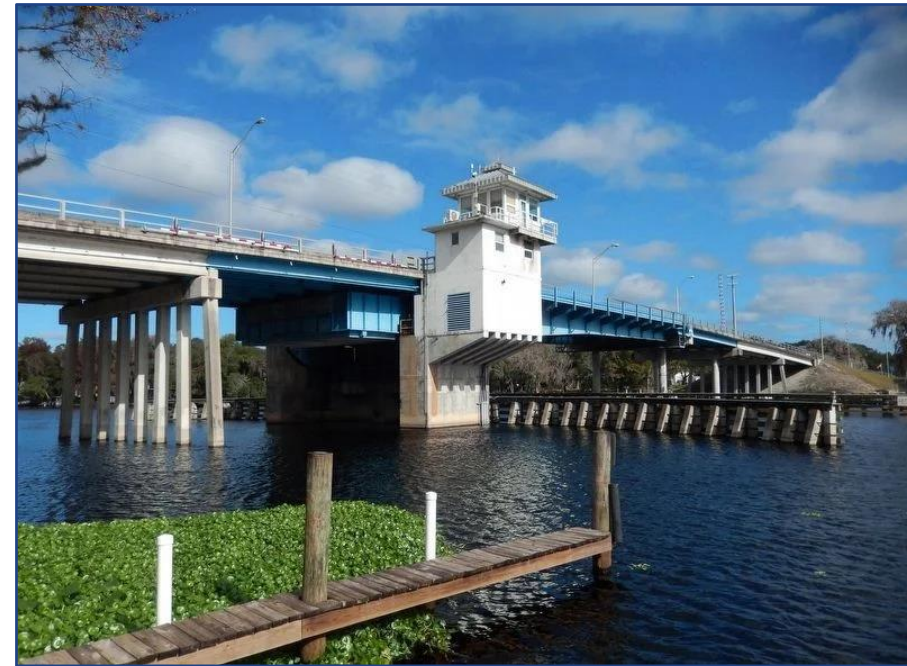
Re-evaluations

New D5 Re-evaluation Coordinator

- *Libertad Acosta-Anderson, P.E.*

Goal for Design-Phase Subconsultants Performing Re-evals

- There will be a NEPA professional as a sub to know what design changes to document
- District & OEM reviews coordinated through the Department
- Ensure adequate time allocated in schedule for coordination, documentation, reviews and potential acceleration of letting





ACEC Insights - Project Delivery
Sunserea Gates, P.E.

*Committee Member for PD&E Planning,
ACEC District 5 Liaison*



Consultant Project Management
Update

Megan Owens

Project Management Supervisor



Networking Break



Project Strategy Examples

Scott Golden, P.E.

Volkert Florida Transportation Lead

Mark Trebitz, P.E.

Project Development Administrator

PROJECT HIGHLIGHT – How to Break the Box

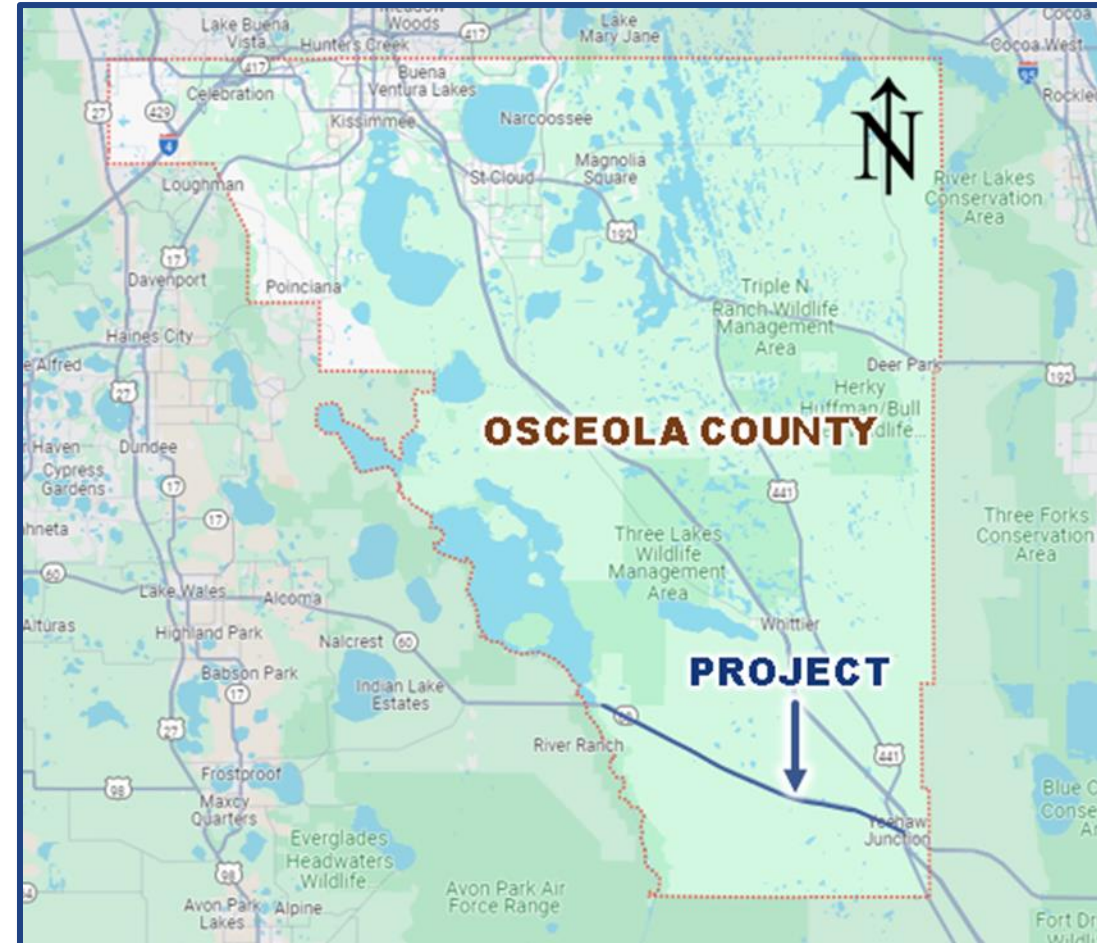
S.R. 60: Prairie Lake Road to Florida's Turnpike

Purpose and Need:

- Improve Safety
- Address existing and future capacity/travel demand

Schedule:

- Preliminary Work by D5 started in May 2024
- PD&E Contract Execution January 2025
- Public Hearing October 14 & 15, 2025
- LDCA May 2026



S.R. 60 Early Risk Identification and Mitigation by District 5 ISD

1

Stakeholders

Transient
Users, Large
Landowners

2

Utilities

New Gas
Pipeline
(outside of
existing south
right in their
easement)

3

Early Species Identification - Utilizing CSC

4

Interim Safety Improvements

Added Passing Lanes
within the corridor to
mitigate fatal and
serious injury
crashes

Signing and
Pavement marking
improvements

5

Schedule (18 months)

Species: Early
species surveys for
the Florida
Grasshopper
Sparrow by
D5 under CSC

Traffic and Safety
Analysis

S.R. 60 Preliminary Concept Screening (Screaming)

Concept Footprints

Defined using KMZ files - allowed desktop and field surveys to advance in the schedule timeline

Allowed concept plans development to continue while other activities such as cultural and habitat field investigation, desktop geotech analysis, and desktop contamination reviews were being performed

Used for Right of Way estimates



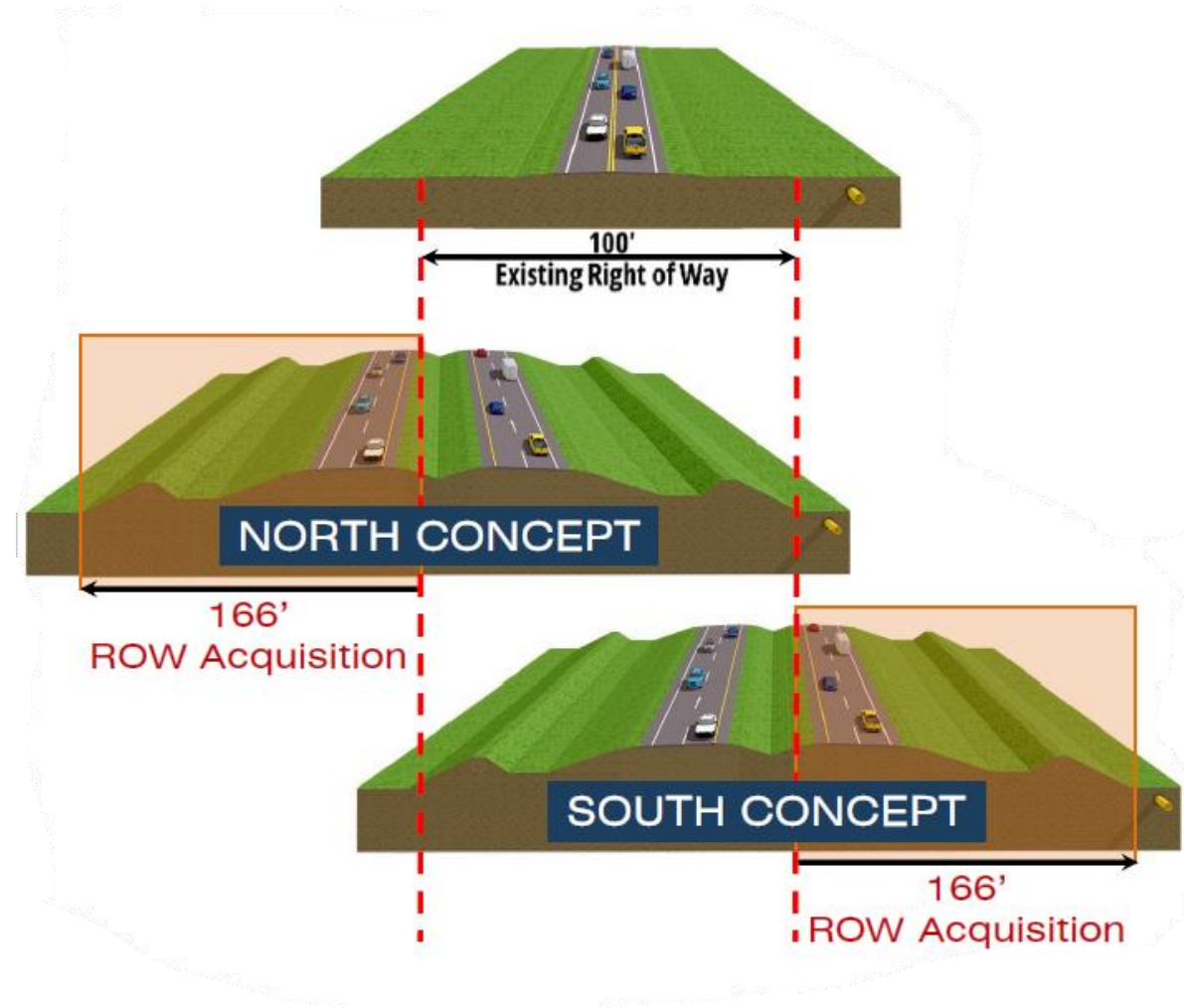
S.R. 60 Preliminary Concept Screening

Table 5-1: PRELIMINARY CONCEPT SCREENING MATRIX

Evaluation Factors	North Concept	South Concept
PROJECT GOALS (PURPOSE AND NEED)		
Meets Future Traffic Demand	Yes	Yes
Enhanced Roadway Safety	Yes	Yes
ENVIRONMENT		
Species/Habitat (Potential Interactions)*	Low	High
Potential Contamination Sites*	Low	Low
Wetlands and Other Surface Water (OSW) Impacts (acres)*	52.4	48.0
Conservation Lands*	Medium	High
Floodplains (acres)*	217.9	184.6
Farmlands*	High	High
UTILITIES		
Utility Conflicts/Relocations*	Low	High
RIGHT-OF-WAY (ROW)		
Number of Business Relocations	0	0
Number of Residential Relocations	5	2
Total Number of Parcels	50	38
Right of Way Acquisition (acres)	400	407
PROJECT COST		
Estimated ROW Cost	\$90.6 M	\$295.0 M
Estimated Construction Cost	\$273.2 M	\$268.5 M
Total Cost**	\$363.8 M	\$563.5 M

*Based on desktop screening

**Does not include Design or Construction Engineering Inspection (CEI) Costs



S.R. 60 Iterative Document Development and Review

Critical Documents were identified for early coordination with District Reviewers

NRE-Habitat assessment memo to discuss potential determinations

PER-Early review of critical chapters in advance of the complete draft submittal

Pond sizing was done very early in place of pond siting which confirmed the swale treatment area/volumes and allowed for environmental assessments to be completed early in the schedule.

Right of way estimates and concept layouts were refined following the initial concept screening

S.R. 60 Enhanced/Personalized Public Involvement

Letters were mailed to each property owner with potential ROW impacts within the study limits to **offer opportunity for individual discussions of the study concepts and to solicit property owner comments.**

Individual Meetings were held with **4 property owners** (representing **54%** of the impacted area)

PROJECT HIGHLIGHT – *Unique Stakeholders, Unique Engagement*

S.R. 401 Bridge Replacement PD&E Study



Project Location

Port Canaveral, Florida – Brevard County



Project Background

Auto and Freight Traffic Volumes

- High percentage of freight / trucks
- Traffic seasonality
- Canaveral Space Force Station, U.S. Coast Guard, and Commercial Space Industry access

Marine Vessel Navigation

- Traffic delays caused by bridge openings

Proximity to S.R. 528, Cruise Terminal, Power lines

Canaveral Barge Canal and Lock

- Canaveral Lock system infrastructure
- Barge Canal - 12-foot deep & 90-foot wide
- Marine vessel height



S.R. 401 Bridge Replacement

Purpose:

- Evaluate improvements to, or replacement of, the existing S.R. 401 bascule bridges (drawbridges) over the Canaveral Barge Canal

Need:

- Improve traffic access, future mobility, congestion and safety needs
- Access to strategic state and national assets
- System linkage and modal interrelationships



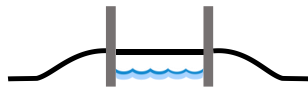
S.R. 401 Concept Alternatives



**High-Level Fixed
Bridge Alternative
Concept**



**Bascule
(Drawbridge)
Alternative Concept**



**Lift Bridge
Alternative
Concept**



S.R. 401: Unique Stakeholders



US Army Corps
of Engineers®



S.R. 401: Unique Engagement Strategy

1

MARINE VESSEL SURVEY

of nearby marinas, tender logs

2

LAUNCH SERVICE PROVIDER SURVEY

to determine future needs for the canal and bridge

3

ADDITIONAL COORDINATION & NEEDS MEETINGS

*Port Canaveral, Space Florida, NASA, Space Force, Navy,
Space Coast TPO, Brevard County*



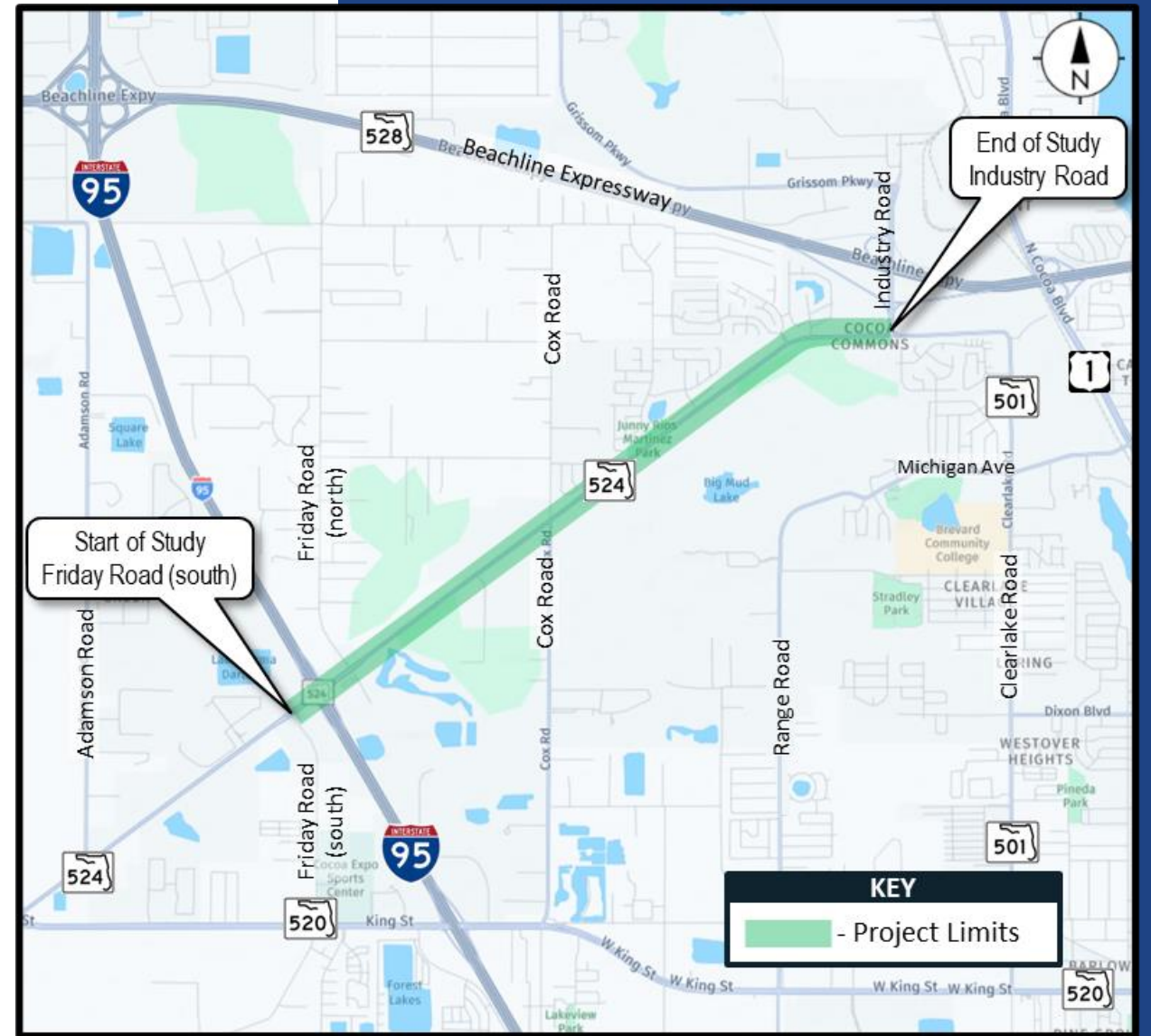
PROJECT HIGHLIGHT – *Roundabout Consensus*

S.R. 524 Widening PD&E Study



S.R. 524: Project Location

- City of Cocoa, Brevard County
- S.R. 524 from Friday Road (South) to Industry Road
- I-95 at S.R. 524 Interchange
- 3.15 miles



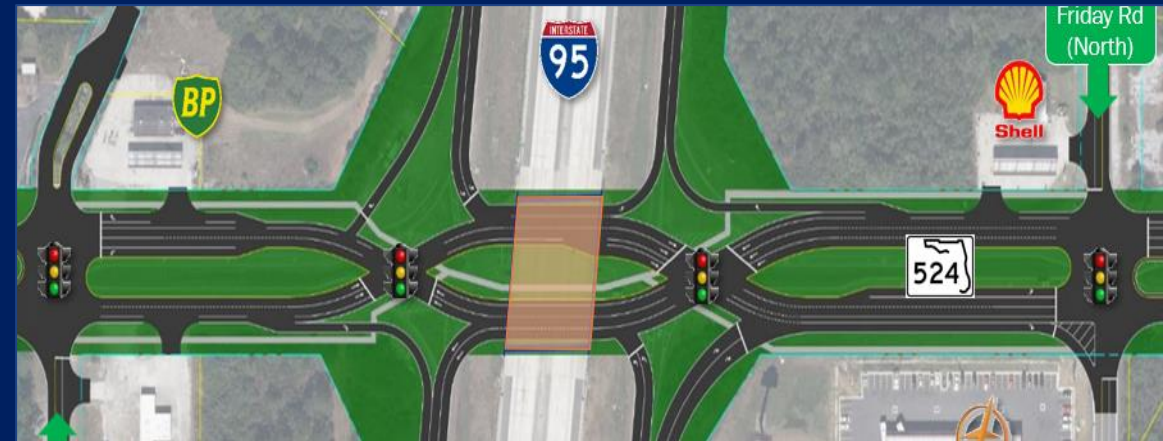
S.R. 524: Purpose and Need



- **Increase Capacity & Accommodate** future transportation demand
- **Enhance** safety for all users including vehicles, bicycles, and pedestrians

S.R. 524: Concept

- Widen S.R. 524 from 2 to 4 lanes with raised median
- Add bicycle/pedestrian features – 14' shared use paths
- I-95 interchange: DDI & replace I-95 bridges
- Roundabouts at 2 intersections
- Access Management Modifications
- 3 Noise Walls + 4 Stormwater Ponds



S.R. 524: Grassroots Engagement

Proactively Engage

Involve Often

Seek Input

Gain Champions

- **Approach:**

- Boots on the ground – One-on-one meetings
- Meeting-specific & group-specific materials, messaging
- Flexible – Adaptable

- **Community Conversations:**

- HOAs, businesses
- Brevard County
- Space Coast TPO
- City of Cocoa Staff & Elected Officials
- Brevard County Staff & Commissioners

- Alternatives Public Meeting

- Public Hearing





Permitting and Environmental Management Update

Casey Lyon

Environmental Administrator

Status of Permitting Activities

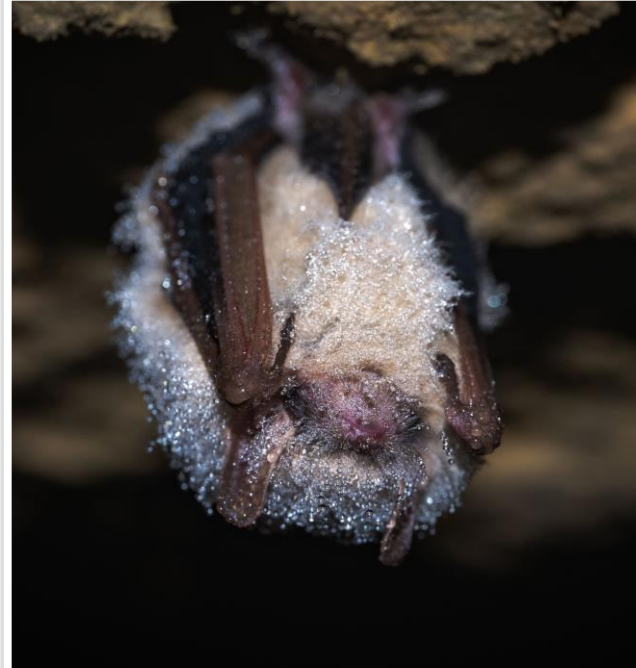
- 1 New stormwater rule and WATERSS
- 2 New state law that allows applicants to go outside of basin for mitigation
- 3 Timeline for regulatory reviews
- 4 5-year buffer for CRAS' regardless of the construction date
- 5 Reminder when working on LAP projects, they must follow the PD&E Manual



Environmental Management Considerations



MONARCH BUTTERFLY



TRI-COLORED BAT



WOODSTORK

Monarch Butterfly and Tri-Colored Bat

Listing status

Delisting of Woodstork (OEM standard language)



Strategic Corridor Initiatives

Steven Buck, P.E.

Strategic Initiatives Administrator

DISTRICT FIVE SEAPORT

FY 28 FORECAST


8,746,293 Cruise Passengers 13% ↑
7,955,049 Tons of Cargo 21% ↑
3,138 Containers 500+% ↑

\$6.1B

Economic Impact
in FY 2024

in Port Canaveral

North America's first liquefied natural gas cruise seaport

TOP IMPORTS:

Petroleum
 Slag
 Lumber
 Granite
 Limestone

TOP EXPORTS:

Slag
 Lumber

NUMEROUS
 INTERNATIONAL
 TRADING PARTNERS

MAJOR INVESTMENTS

REBUILD NORTH CARGO BERTH 4

RENOVATE/REBUILD SOUTH CARGO BERTHS 3 AND 4
 COMPREHENSIVE DREDGING PROJECT

LEGEND

-  Cargo Berths
-  Cruise Terminals
-  Recreation Sites
-  Cape Canaveral Space Force Station
-  Major Roads

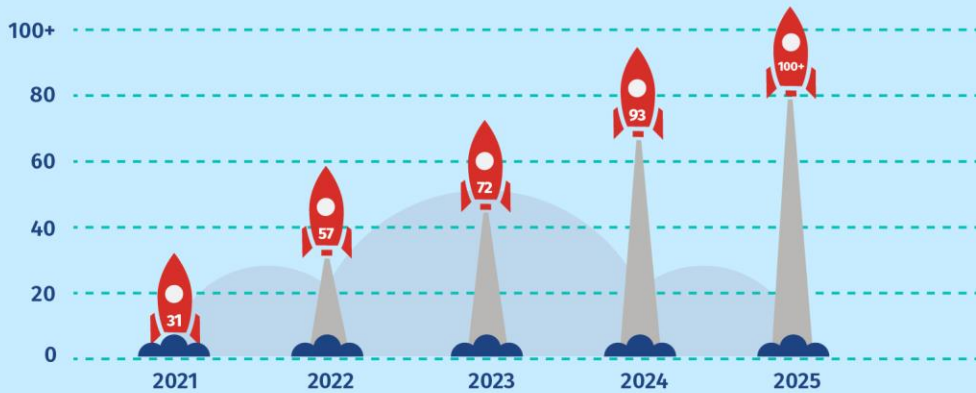


DISTRICT FIVE

SPACEPORT

SUPPORTING GROWING DEMAND

Increase in Launches



4,900 New high paying Florida job created.

1,200+ Jobs are expected to be added by end of 2026.

PREDICTED 2025 - 2030 FDOT INVESTMENT: \$426 M

17% Increase

\$8.2 B in economic output generated by NASA activities in Florida.

For every dollar invested in aerospace in Florida, Florida will realize a return of **\$3.54**

MAJOR INVESTMENTS

SPACEPORT TRANSPORTATION & ENERGY COMMON USE



\$16.7M INVESTMENT

SPACEPORT COMMODITIES PIPELINES EXTENSION



\$13M INVESTMENT

PROJECT HINTON HIGH BAY & PRODUCTION FACILITY FOR LAUNCH INFRASTRUCTURE

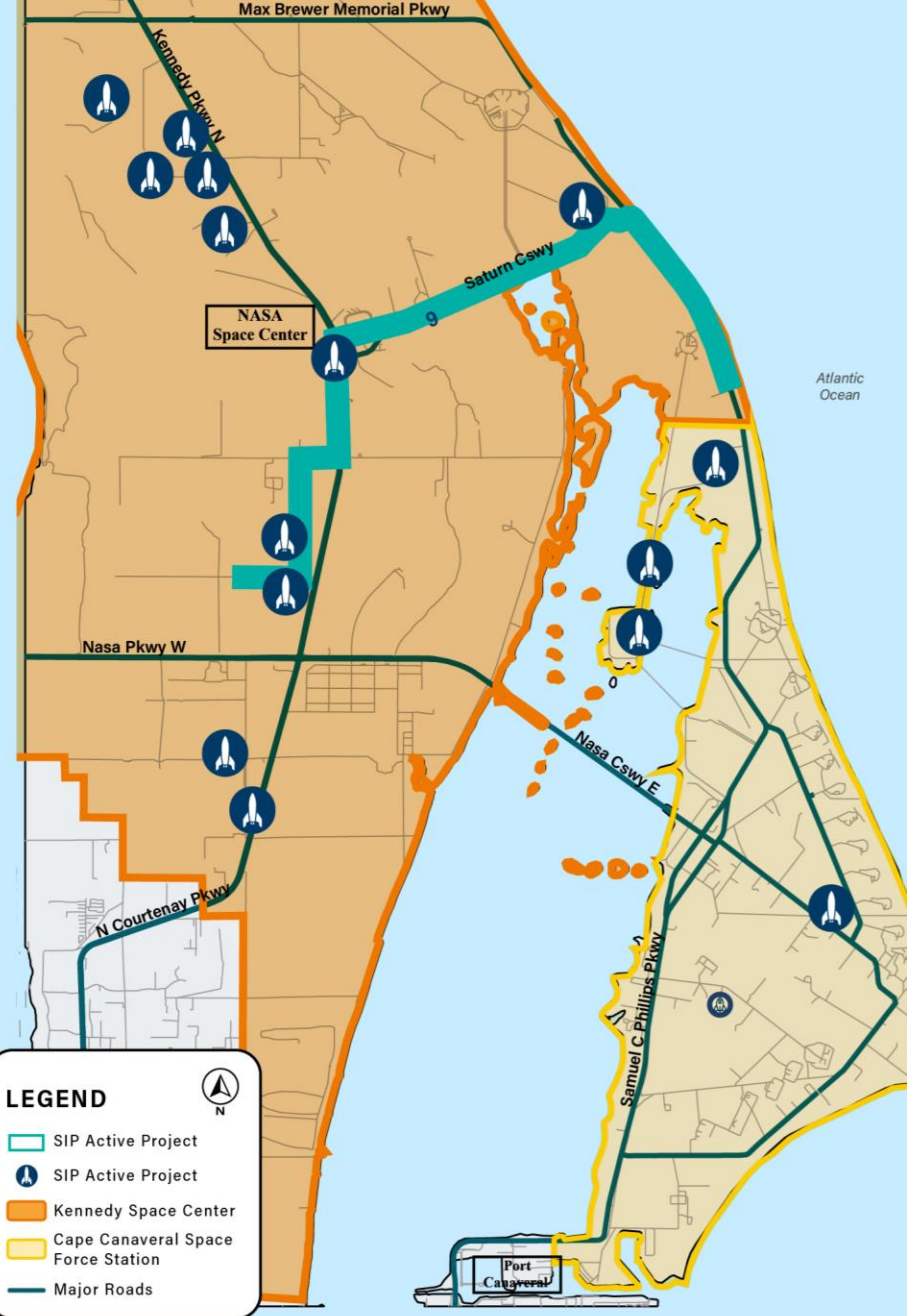


\$10M INVESTMENT

LUNAR PRODUCTION FACILITY



\$9.25M INVESTMENT



DISTRICT FIVE AVIATION

21
Facilities
in D5

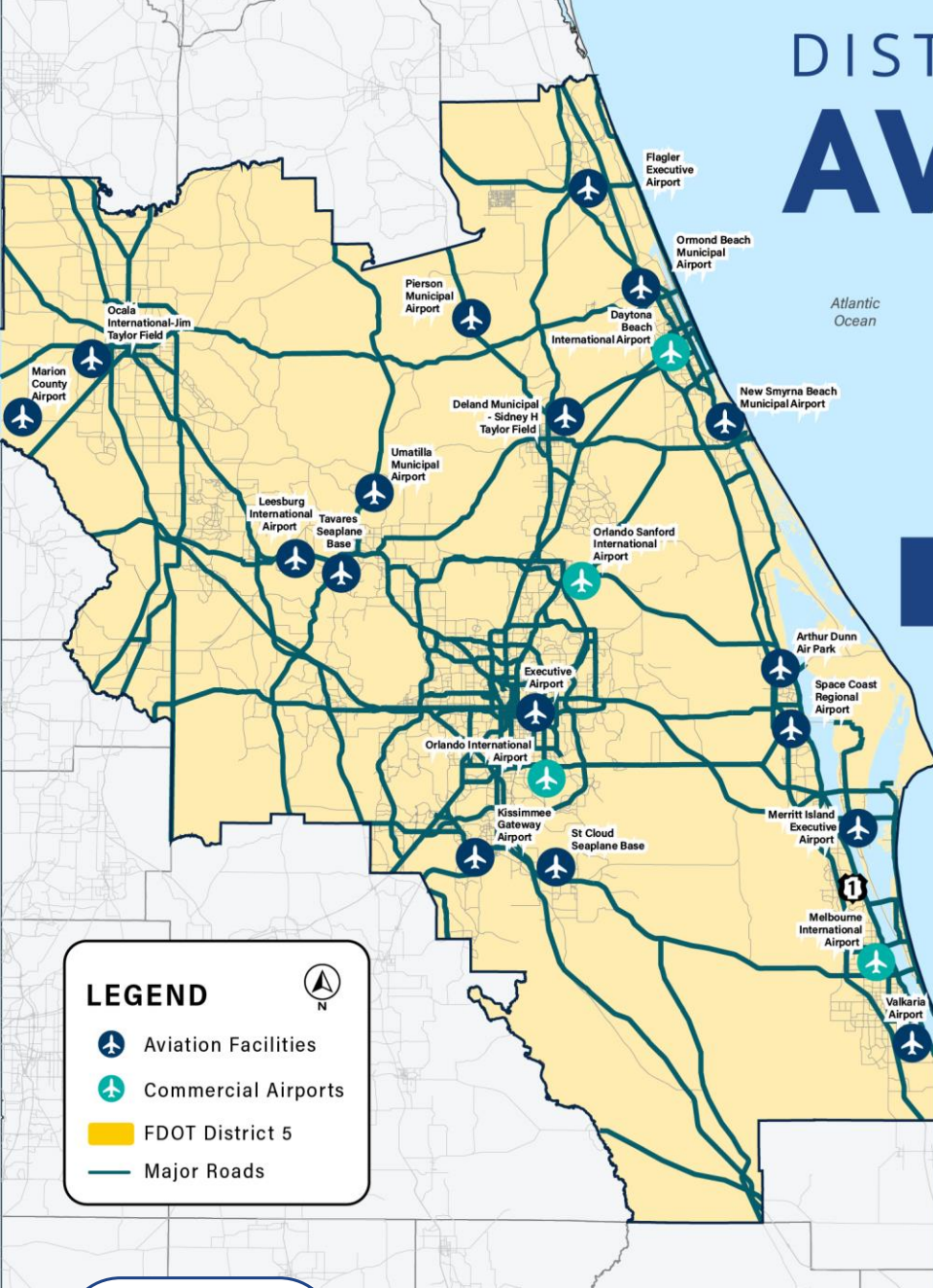
4
Commercial
Service

14
General
Aviation

3
Seaplane
Bases

Enplanement Data

	2023	2043
MCO	23,970,699	39,670,796
SFB	1,399,528	2,316,177
MLB	319,985	529,565
DAB	362,260	599,530



LEGEND

- Aviation Facilities
- Commercial Airports
- FDOT District 5
- Major Roads

DISTRICT 5 AVIATION IMPACT



\$93B in Total Economic Impact, the highest of any District



575,000 jobs

(2022 Aviation Economic Impact Study)



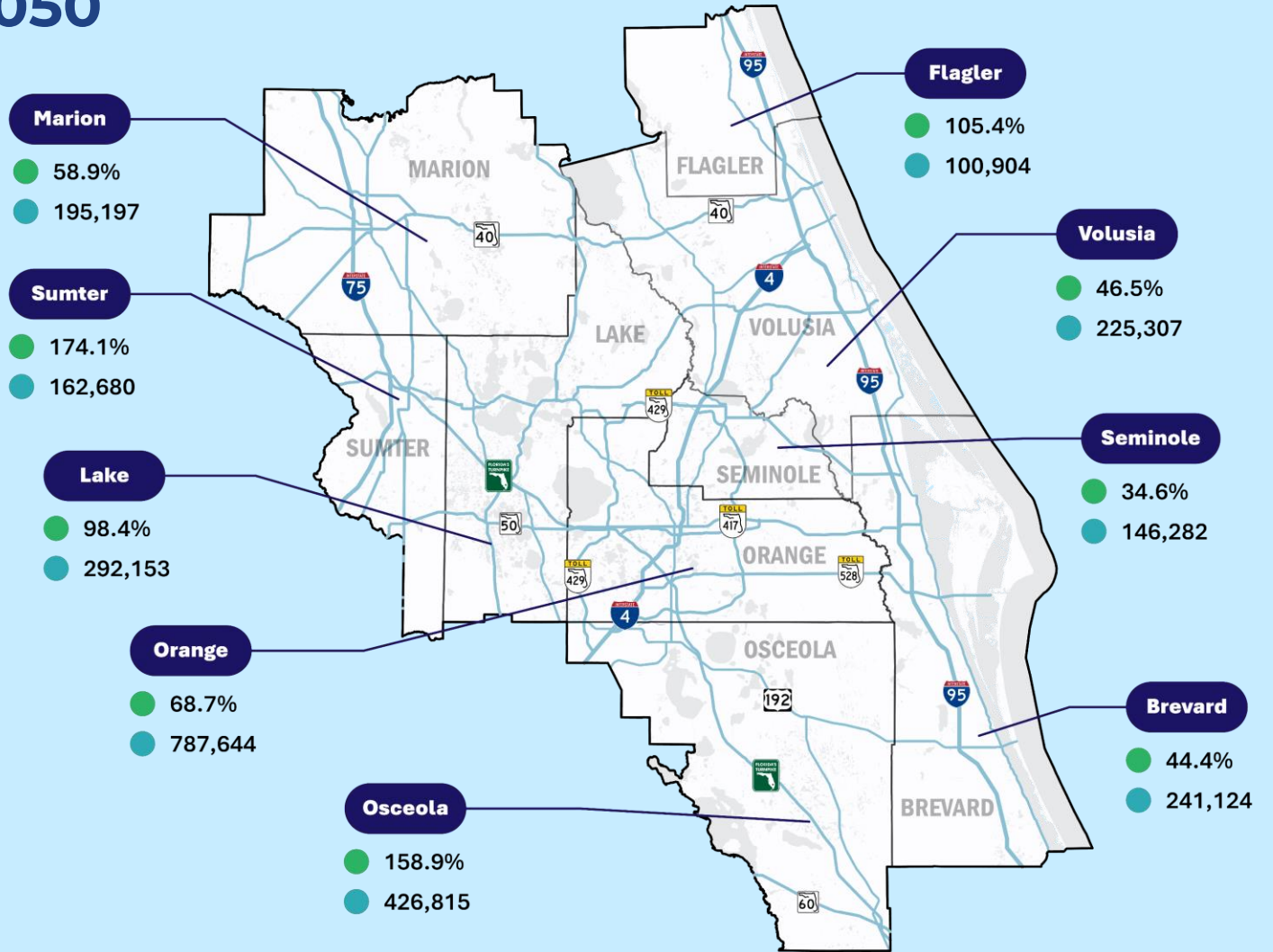
DISTRICT POPULATION GROWTH

CHANGE FROM 2010 TO 2050



Legend

- % increase in population
- Total change in population





Transit Planning Updates

Jon Scarfe

Planning Manager

DISTRICT FIVE TRANSIT

SERVICES PROVIDED:

- > Fixed Route
- > On Demand
- > Paratransit
- > VanPool

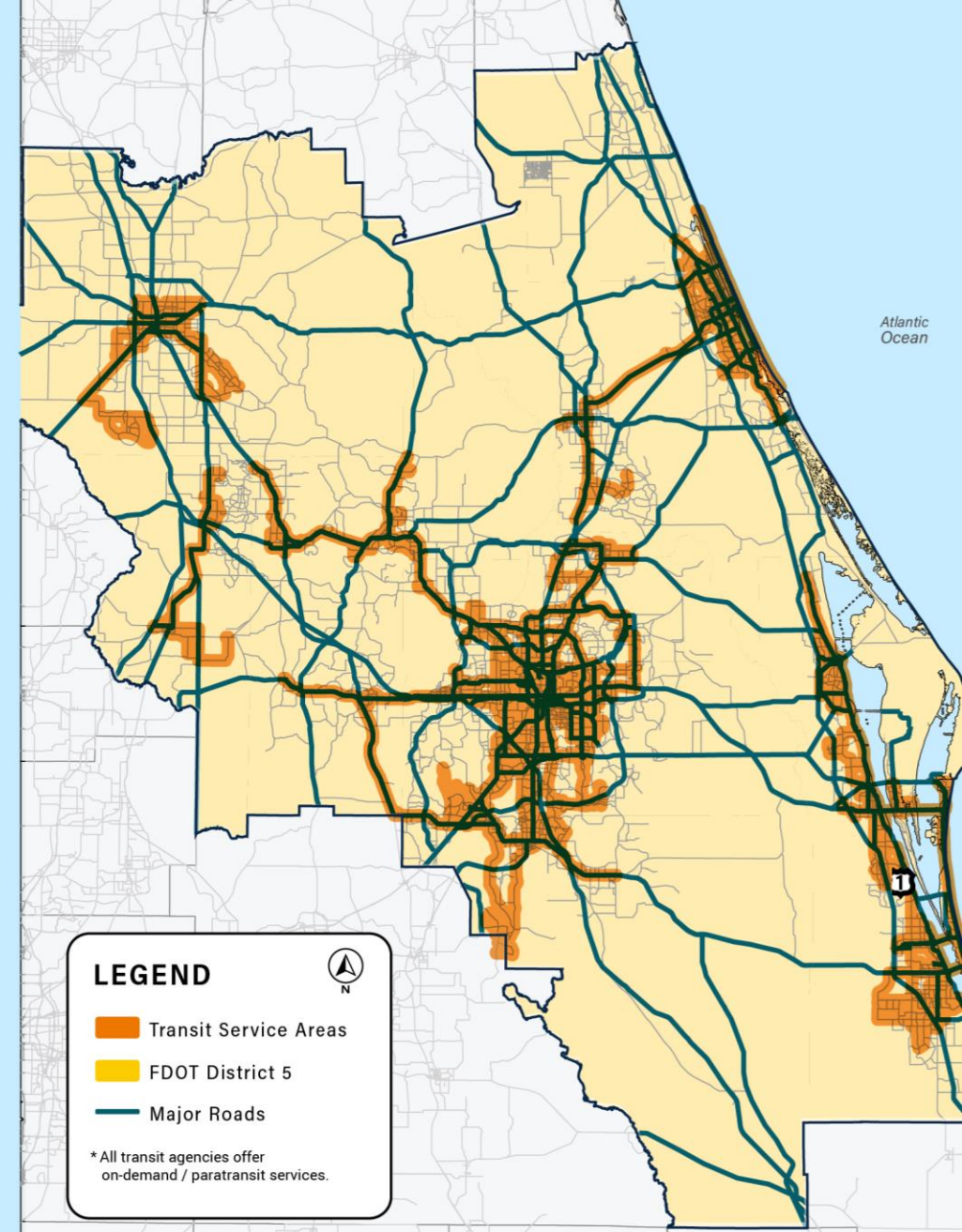


\$23 Million in State Funds vs
\$2.7 Billion in Economic Impact



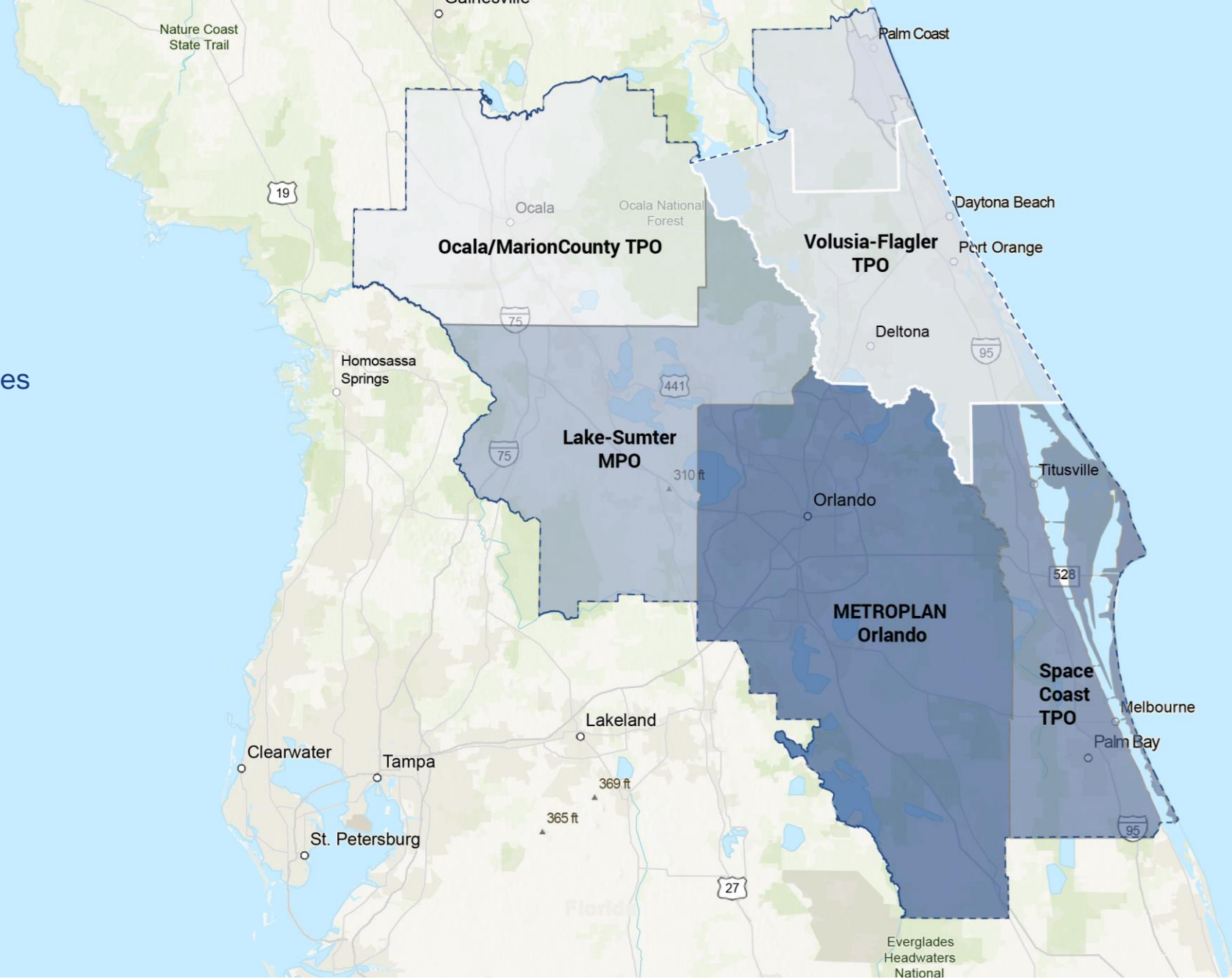
\$1 invested in public transportation
 generates **\$5** in economic returns.

MAJOR INVESTMENTS



MPOs in District 5

-  **MetroPlan Orlando**
Orange, Osceola and Seminole Counties
-  **Volusia-Flagler TPO**
Volusia County and Flagler County
-  **Space Coast TPO**
Brevard County
-  **Ocala/Marion County TPO**
Covers Marion County
-  **Lake-Sumter MPO**
Covers Lake and Sumter Counties
-  **FDOT District 5 Boundaries**





Rail Updates

David Cooke

Rail Administration Manager

Rail Updates

General Requirements for Projects Involving Railroads

- Plan Sheets
 - 30% Plans
 - Typical plan sets needed (when applicable) include: roadway, S&PM, drainage and utility
- Include railroad crossing number in plan sheets
- Ask for specific railroad plan notes from District Railroad Coordinator
- Project Letting Date



Rail Updates

CEI consultants will need to be aware that the following is required as part of their submittal:

- Contractor contact information
- Work plan
- Hurricane plan
- PPE plan
- Required Railroad Protective and Liability Insurance

Traffic Control Plans may impact adjacent railroad crossings

- Off-site detours may affect nearby railroad crossings



Rail Updates

All items below shall be approved PRIOR to any work being done within any railroad ROW:

- All plan sheets/sets
- Work, hurricane, and PPE plans
- Insurance certificates

No work can be done without:

- Approval and scheduling of a railroad flagger provided by the respective railroad.





Questions & Answers

FDOT DISTRICT 5/ACEC-FL

ISD INDUSTRY FORUM

APRIL 8, 2026

No.	Name	Company
1	John Rice	R S & H, Inc.
2	Danni Jorgenson	NDS
3	JJ Samus	GM2 Inc
4	Courtney Orlando	Fehr & Peers
5	Chris Rizzolo	AECOM
6	Katie Habgood	Patel Greene & Assoc.
7	Steve Mikesell	TMC
8	Yasmin Moreno	CERM
9	Jason Toth	Merriek & Company
10	Lauren Peters	Merriek & Company
11	DEMIAN MILLER	DEWESLOTT
12	Alexander Socarras	Ascon - R&K
13	LISA FRUGÉ	WSP
14	md sekerat Hossain	WSP
15	Bill Liatsos	AECOM
16	Miriam Afenortua	CERM
17	Imran Ghani	OSIRIS & CONSULTING
18	David Schmitt	Insight Transportation Consulting
19	Suran Jurem	FOOT / HWB
20	Alexis Weaver	AIM Engineering
21	Ivona Minossora	ECS Florida, LLC
22	Kelley Ahlers	RES
23	Paul Sebert	RES
24		
25		

FDOT DISTRICT 5/ACEC-FL

ISD INDUSTRY FORUM

APRIL 8, 2026

No.	Name	Company
1	Andy Nicol	GFT
2	TRUONG TRINH	ENNOV8 Design Group
3	POORNA BHATTACHARYA	ASHA PLANNING
4	Demond Hazley	Hazley Transportation Group
5	Alexandros Casa Salena	C E M associates
6	Stephen Benson	H.W. Lochner
7		
8		
9		
10		
11		
12		
13		
14		
15		
16		
17		
18		
19		
20		
21		
22		
23		
24		
25		

FDOT DISTRICT 5/ACEC-FL

ISD INDUSTRY FORUM

APRIL 8, 2026

No.	Name	Company
1	Scott Golden	Volker
2	Victor Muchuruza	HDR
3	Jason Howard	Ardustra
4	Nate Willbur	The Balmoral Group
5	Amy Niwi	Metric
6	Halley Ferrell	Triune IA
7	ERIK NEUKAARD	ECS
8	Steve Ferrell	HDR
9	Erika Miller	Kimley-Horn
10	Theo Petritsch	Landis Evans
11	AMANDA ASHBY	PGA
12	Clayton Fillyaw	GFT
13	John Greist	NDS
14	Lois Davis	Proton
15	KUX Blagat	Graham Smith
16	Elizabeth Fernandez	GM2
17	Satya Kolluru	osiris 9 Consulting
18	Keith De Luca	DCCM.
19	SCOTT PERFFATER	BURGESS = NIPLE
20	Karl Passeti	Kittelco & Associates
21	Abigail Donkor	Modern Mobility Partners
22	Matt Wey	Merrick & Company
23	Kathrin Tellez	Fehr + Peers
24	Stephen Browning	Osiris 9
25	Diana A. Ramirez	ALFA

FDOT DISTRICT 5/ACEC-FL

ISD INDUSTRY FORUM

APRIL 8, 2026

No.	Name	Company
1	Zachary Zalneraitis	Protein Design Group
2	DAVID McFARLIN	VOLKERT, INC.
3	Brittany DiMarco	AIM Engineering
4	Marlon Orellana	Corradino Group.
5	Jamell Smith	VHB.
6	Alison Beaty Campbell	The Balmoral Group
7	TANIA KEISTOFF	LOCHNER
8	Robert Linares	Metric Eng.
9	Laura Herrscher	Stantec.
10	HAL PETERS	GPI GEOSPATIAL
11	Ryan Wenger	PGA
12	Mindy Heath	CDM Smith
13	Melissa Gross	InNovo Partners
14	Jeremy Bloom	SPD Engineers
15	Alex Mims	TJA
16	Justin Hannah	RS&H
17	Jesse Blouin	WSP
18	Jennifer Flores	AECOM
19	Ying Wu	AECOM
20	Sophia Villavicencio Ortiz	UHS
21	Vipad Vishwanatha	H.W. Lochner.
22	Aung Thura'in	RI&K
23	JAY PATEL	AIM Engineering
24	Greg Vaughn	AtkinsRealis
25	Ken Siu	MERRICK & CO.

FDOT DISTRICT 5/ACEC-FL

ISD INDUSTRY FORUM

APRIL 8, 2026

No.	Name	Company
1	Mike Dinardo	Stantec
2	Heather Grubert	Stantec
3	BETH BEAM	STANTEC
4	Shari Curling	Quest
5	Suzanna Gates	VHB
6	Allyson Burke	Ardurra
7	DAVE SULLIVAN	McKim & CREED
8	Sofia Navarro	The Balmoral Group
9	GREG SEIDER	BALMORAL GROUP
10	MATT WIESENFELD	HDR
11	MICHAEL ANGOTTI	PACIFICA ENG SERVICES
12	Michael Garcia	Kimley-Horn
13	Jeanette Maldonado	Stantec
14	AL QUICKEL	WGI
15	Shane Whittier	Pacifica Engineering
16	Joyce Burkley	Conson Engineering
17	Mark Bacal	Kimley-Horn
18	Jason Cornell	ETP
19	Suzette Taylor	Media Relations Group
20	Paul Bowker	VOLER GROUP
21	JOHN PATRICK	BEN
22	Timothy Hill	LJA
23	MANUEL RICHARDSON	VOLKERT
24	Travis Stewart	Atkins Realis
25	Tyler Wajlum	CTS

FDOT DISTRICT 5/ACEC-FL

ISD INDUSTRY FORUM

APRIL 8, 2026

No.	Name	Company
1	Gabriel Perez	Stantec
2	MIKE DRAUGH	STANTEC
3	Jim Wood	Kimley Horn
4	Amy Sirmans	VHB
5	Angela Matusik	SEARCH
6	Paul Mannix	Atkins Realis
7	Ronald Colletti	RKK
8	Lauren Hatchell	Media Relations Group
9	BRAM ALEXANDER	VOLEK GROUP
10	JAY PATEL	AIM ENGINEERING
11	DAVID GRAEGER	ASPIREON CONSULTING
12	Jessica Sossakyn	Kitchison
13	ADAM BURGHDOFF	KIMLEY-HORN
14	Kim Warren	PBA
15	JJ JACQUIN	AIM ENGINEERING
16	Kevin Freeman	VHB
17	Nikki Melendez	VHB
18	ANU SHAH	STV
19	Adam Ivory	DCCM
20	Rgt Jang	CTS
21	Tori Kolk	ESA
22	JOEDEL ZAGALERO	TMC
23	Imvcan Shah	Jacobs
24	Nicholas GARDOR	Volkert
25	TARA JONES	JACOBS.